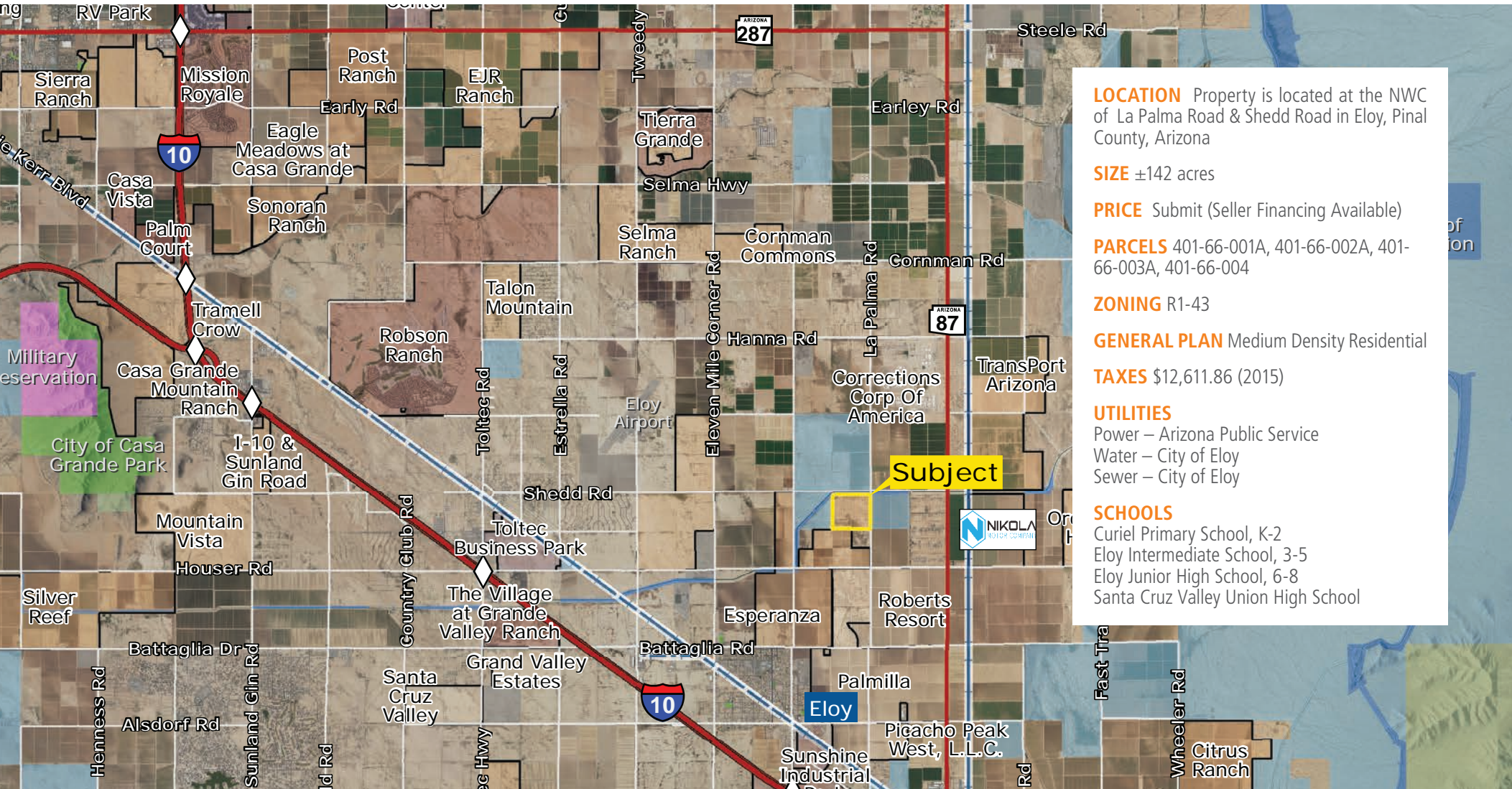


±142 ACRES FOR SALE

EXCLUSIVE LISTING | ELOY, PINAL COUNTY, ARIZONA



LOCATION Property is located at the NWC of La Palma Road & Shedd Road in Eloy, Pinal County, Arizona

SIZE ±142 acres

PRICE Submit (Seller Financing Available)

PARCELS 401-66-001A, 401-66-002A, 401-66-003A, 401-66-004

ZONING R1-43

GENERAL PLAN Medium Density Residential

TAXES \$12,611.86 (2015)

UTILITIES

Power – Arizona Public Service

Water – City of Eloy

Sewer – City of Eloy

SCHOOLS

Curiel Primary School, K-2

Eloy Intermediate School, 3-5

Eloy Junior High School, 6-8

Santa Cruz Valley Union High School

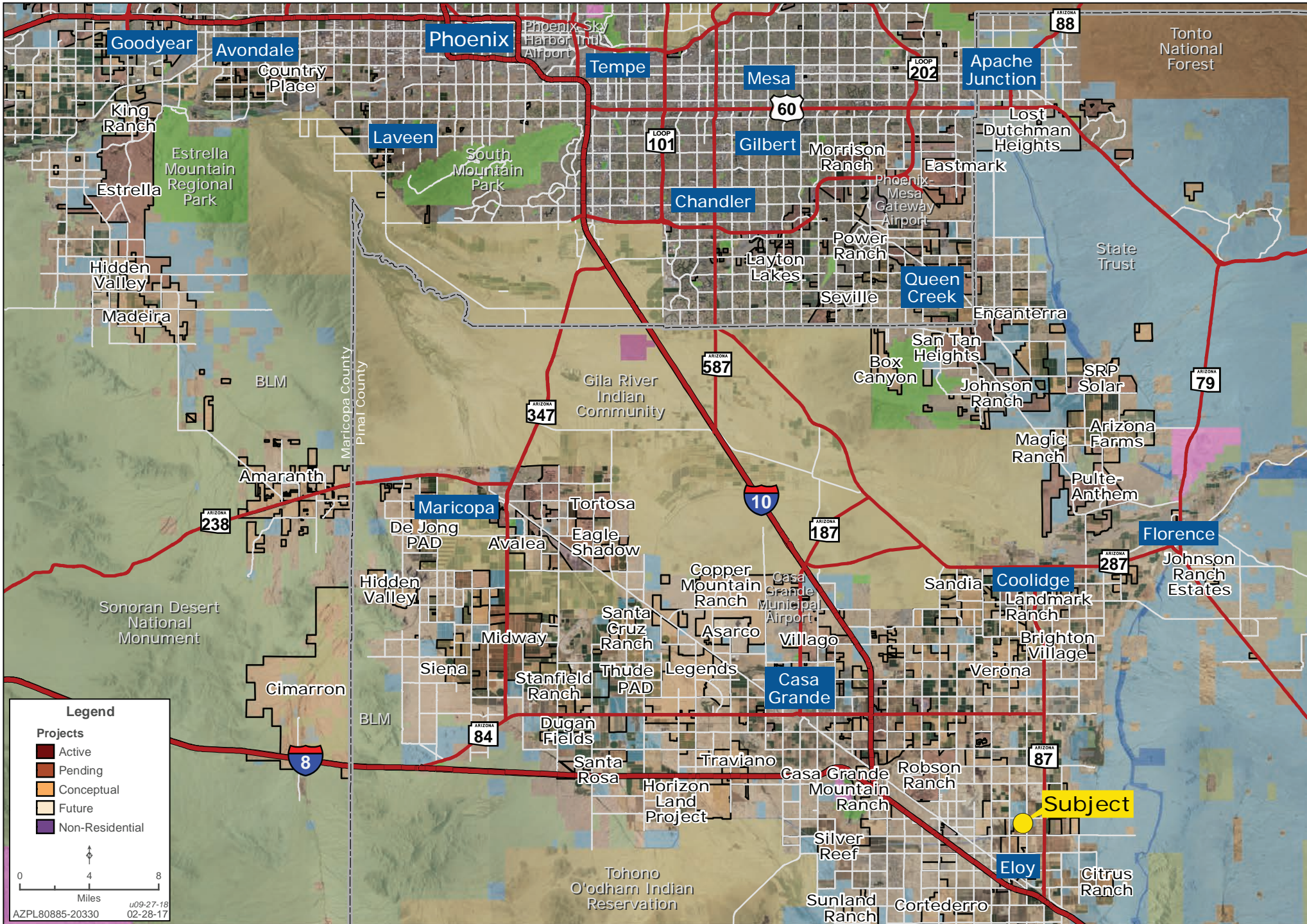
Bret Rinehart | brinehart@landadvisors.com **Ryan Semro** | rsemro@landadvisors.com **Ben Heglie** | bheglie@landadvisors.com
4900 North Scottsdale Road, Suite 3000, Scottsdale, Arizona 85251 ph. 480.483.8100 | www.landadvisors.com

The information contained herein is from sources deemed reliable. We have no reason to doubt its accuracy but do not guarantee it. It is the responsibility of the person reviewing this information to independently verify it. This package is subject to change, prior sale or complete withdrawal. AZPL80885 - 2.11.2019



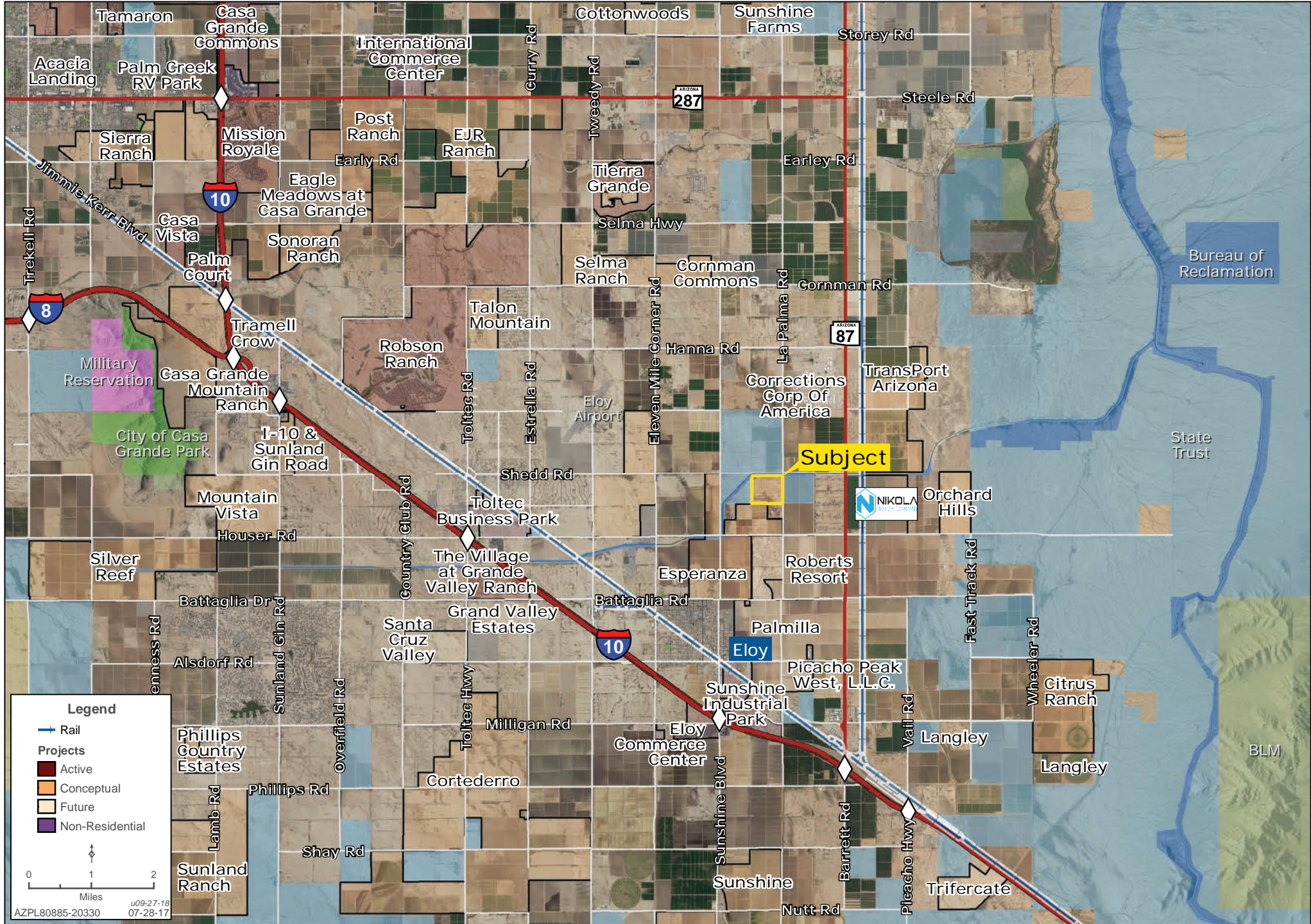
REGIONAL MAP

Ben Heglie | 480.483.8100 | www.landadvisors.com



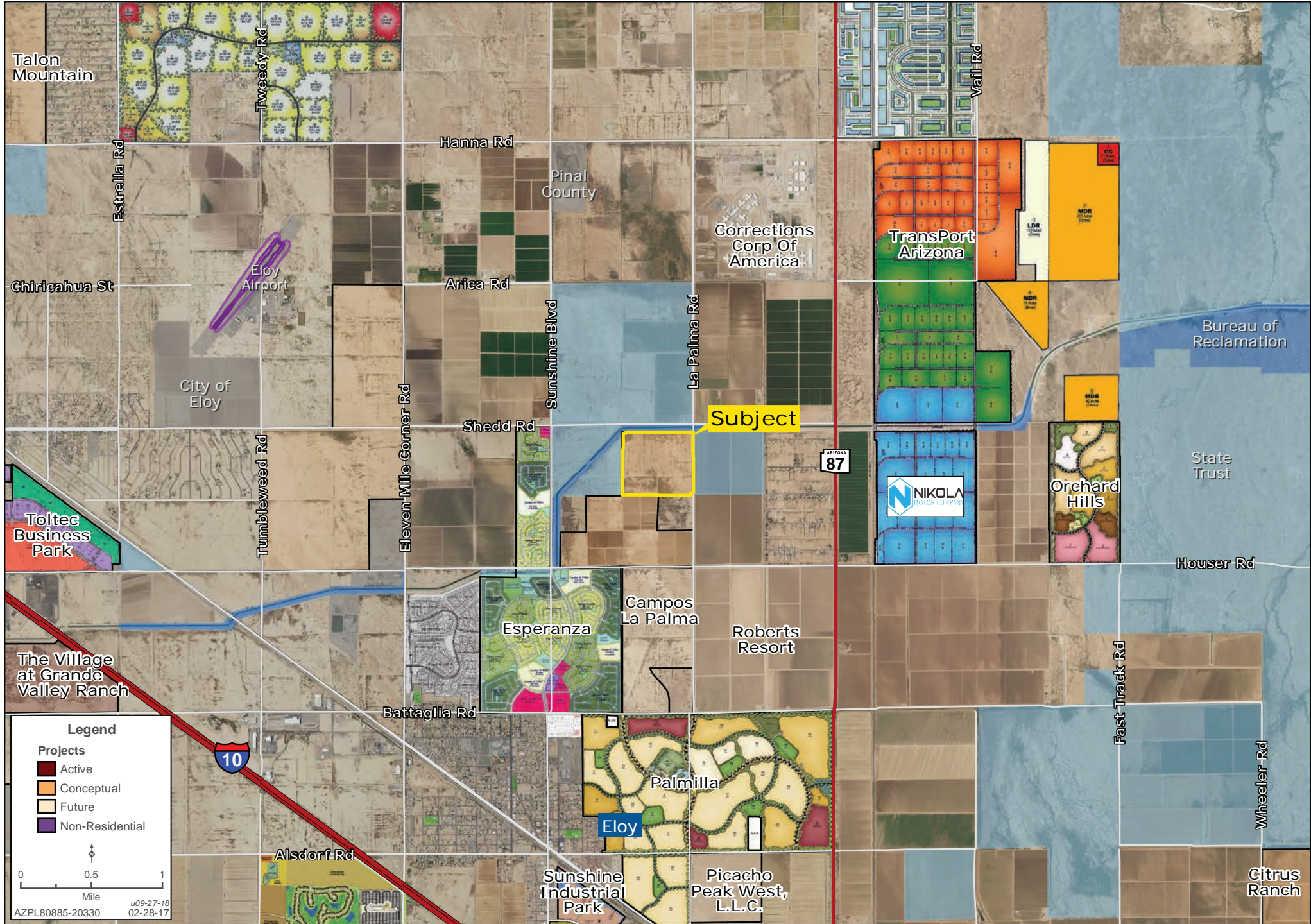
SURROUNDING DEVELOPMENT MAP

Ben Heglie | 480.483.8100 | www.landadvisors.com



SURROUNDING AREA MAP

Ben Heglie | 480.483.8100 | www.landadvisors.com



Legend

Projects

- Active
- Conceptual
- Future
- Non-Residential

0 0.5 1
Mile

u09-27-18
02-28-17

AZPL80885-20330

PROPERTY DETAIL MAP

Ben Heglie | 480.483.8100 | www.landadvisors.com

