

For Sale
8,343 SF
Commercial | Office



92 West Main Street Chester, New Jersey

8,343 SF Commercial | Office | Home

Consists of a 5,872 SF addition (built 2015) and completely renovated 2,471 SF colonial home originally built in the 1700's on 1 acre

Corner location just west of U.S. 206 at intersection of Route 24 and Main Street

Quality construction & design throughout


Offered at \$1,999,000

Sig Schorr, Vice President

973 463 1011 x177

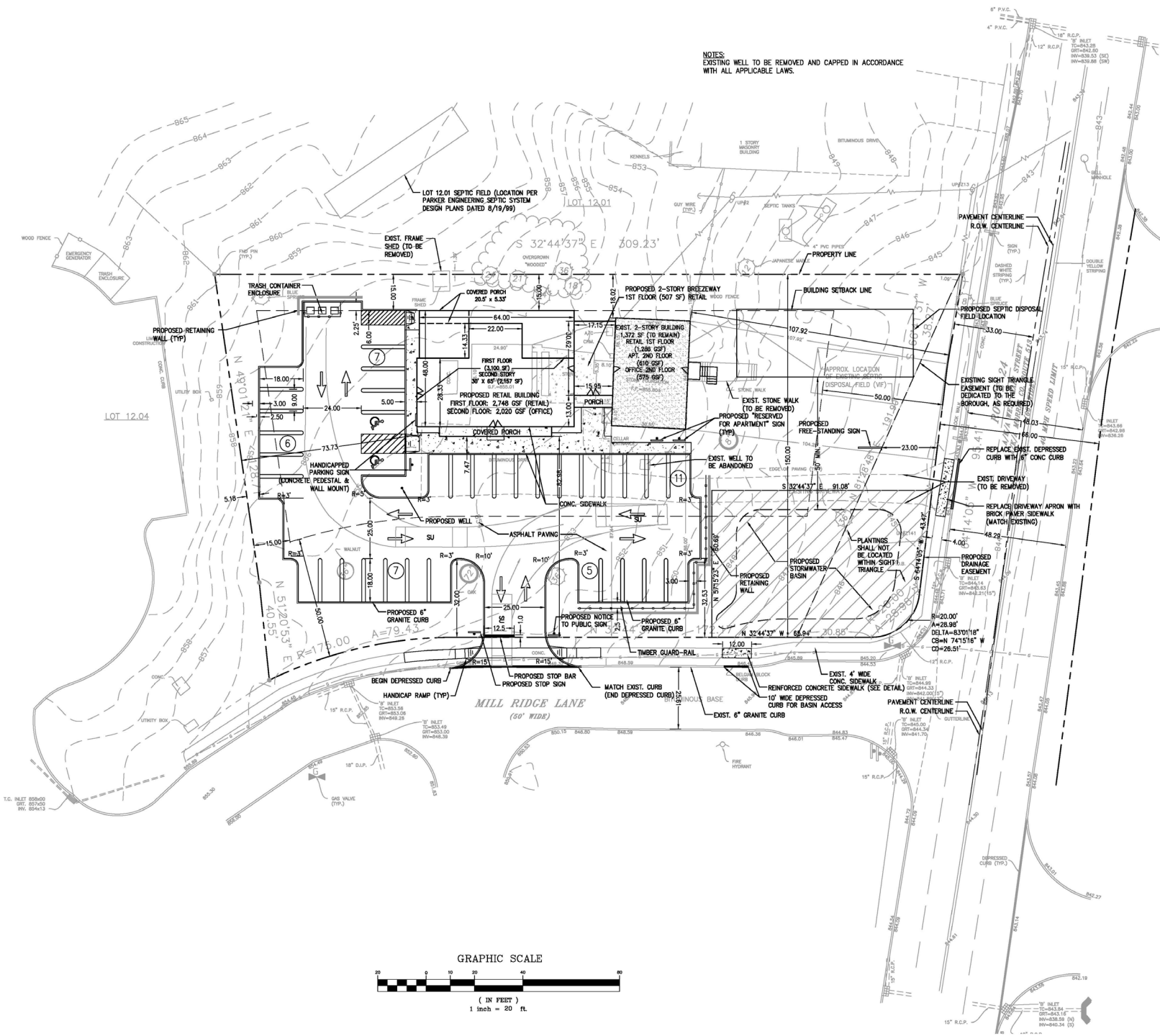
sschorr@naihanson.com

NAI James E. Hanson
COMMERCIAL REAL ESTATE SERVICES, WORLDWIDE

FOLLOW US!     | Member of NAI Global with 400 Offices Worldwide

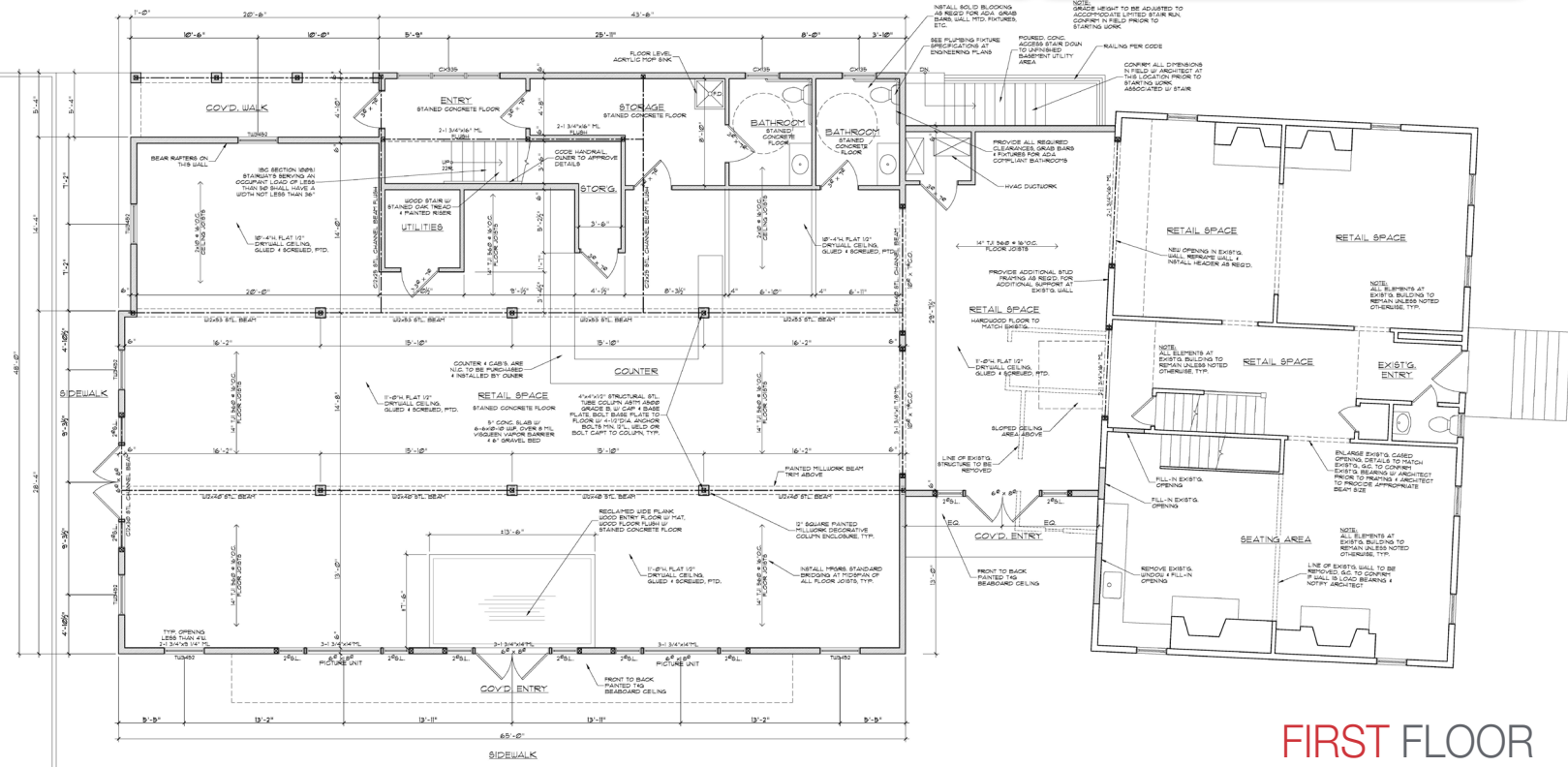
195 North Street, Suite 100 • Teterboro, NJ 07608 | 201 488 5800 • 10 Lanidex Plaza W., Parsippany, NJ 07054 | 973 463 1011 • naihanson.com

THE INFORMATION CONTAINED HEREIN HAS BEEN OBTAINED FROM SOURCES CONSIDERED TO BE RELIABLE, BUT NO GUARANTEE OF ITS ACCURACY IS MADE BY NAI JAMES E. HANSON.

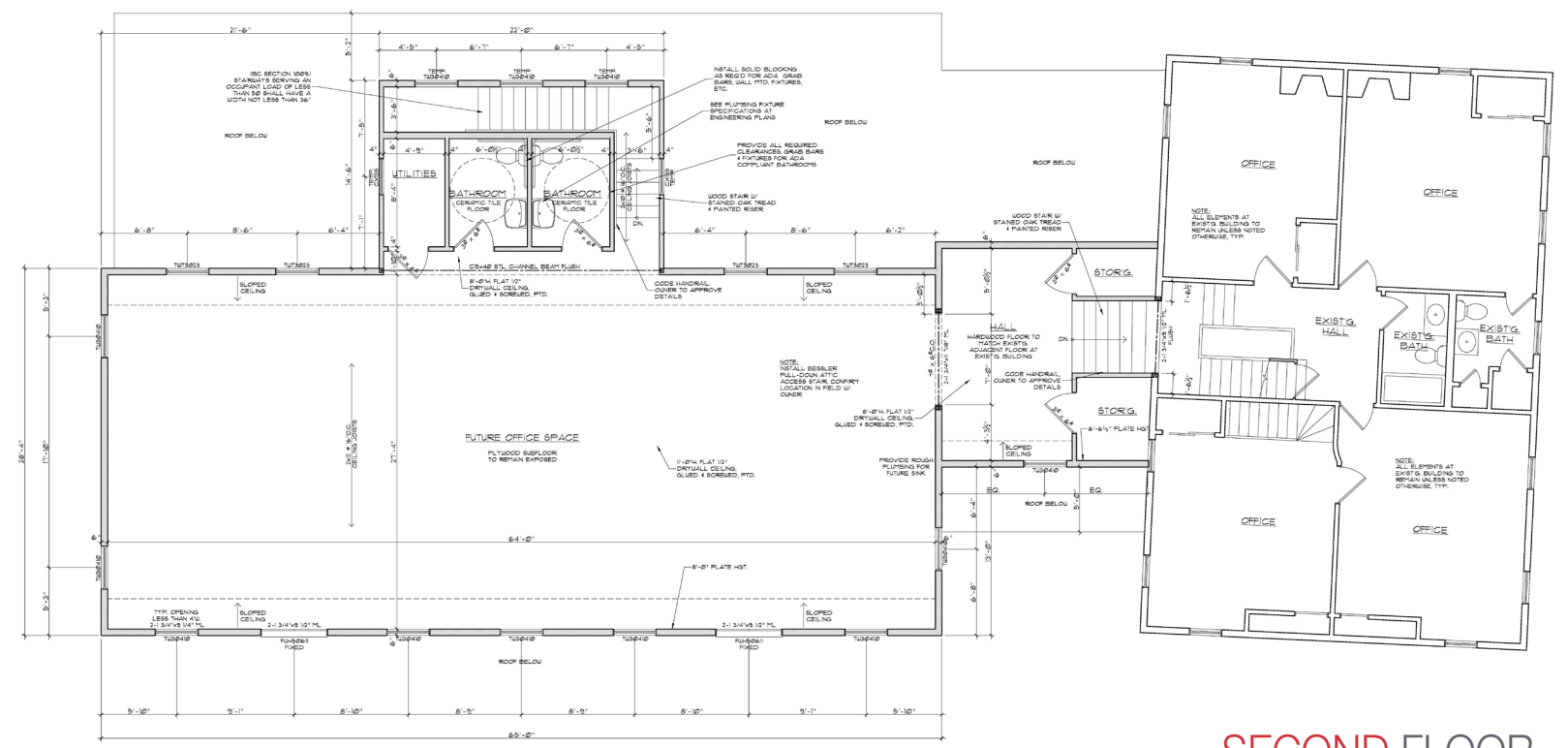


Floor Plans

92 West Main Street
Chester, New Jersey



FIRST FLOOR



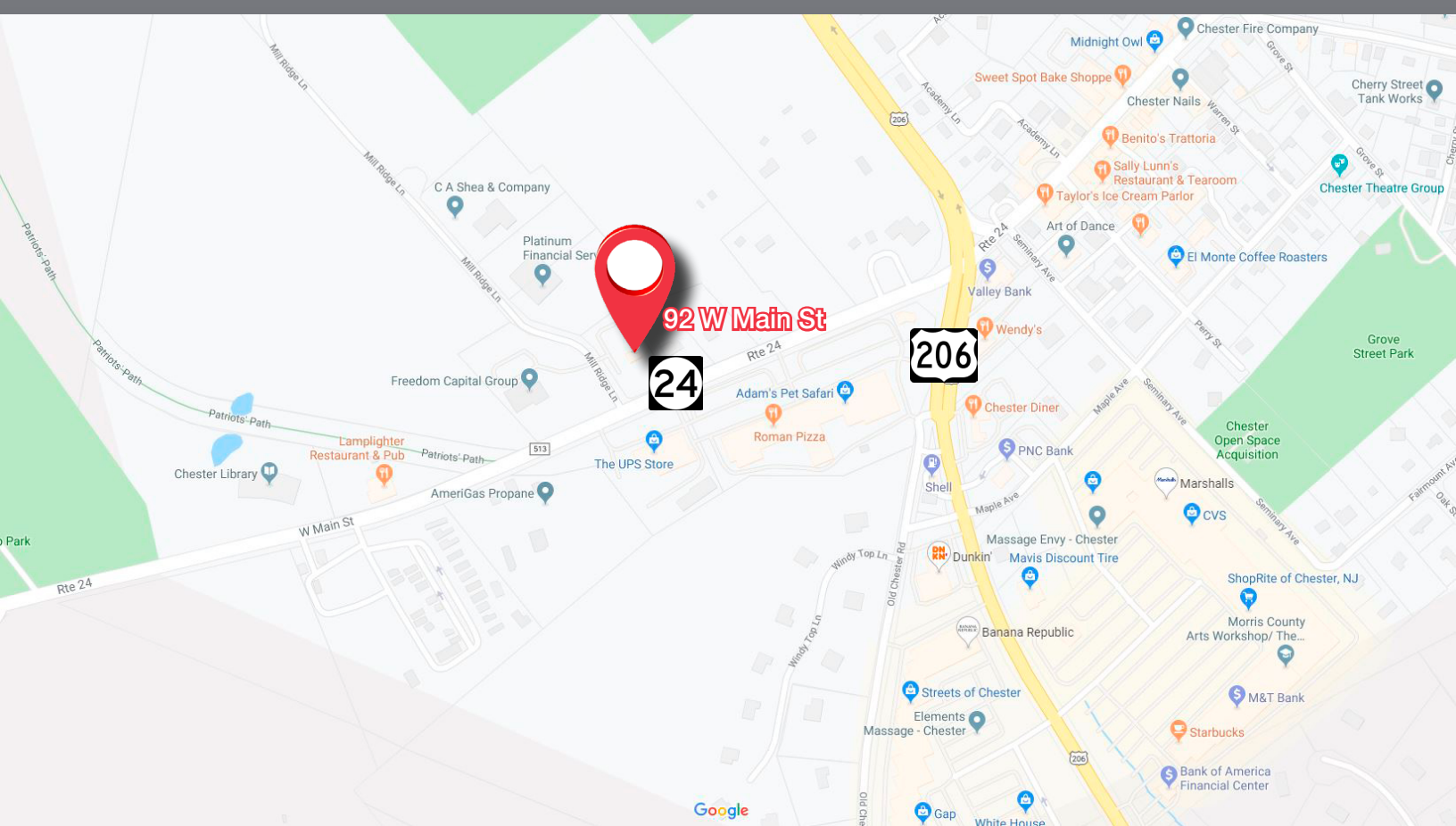
SECOND FLOOR



FOLLOW US! [f](#) [i](#) [t](#) [in](#) | Member of NAI Global with 400 Offices Worldwide

195 North Street, Suite 100 • Teterboro, NJ 07608 | 201 488 5800 • 10 Lanidex Plaza W., Parsippany, NJ 07054 | 973 463 1011 • naihanson.com
THE INFORMATION CONTAINED HEREIN HAS BEEN OBTAINED FROM SOURCES CONSIDERED TO BE RELIABLE, BUT NO GUARANTEE OF ITS ACCURACY IS MADE BY NAI JAMES E. HANSON.

92 West Main Street Chester, New Jersey



NAI James E. Hanson
COMMERCIAL REAL ESTATE SERVICES, WORLDWIDE

FOLLOW US! [f](#) [i](#) [t](#) [in](#) | Member of NAI Global with 400 Offices Worldwide

195 North Street, Suite 100 • Teterboro, NJ 07608 | 201 488 5800 • 10 Lanidex Plaza W., Parsippany, NJ 07054 | 973 463 1011 • naihanson.com
THE INFORMATION CONTAINED HEREIN HAS BEEN OBTAINED FROM SOURCES CONSIDERED TO BE RELIABLE, BUT NO GUARANTEE OF ITS ACCURACY IS MADE BY NAI JAMES E. HANSON.