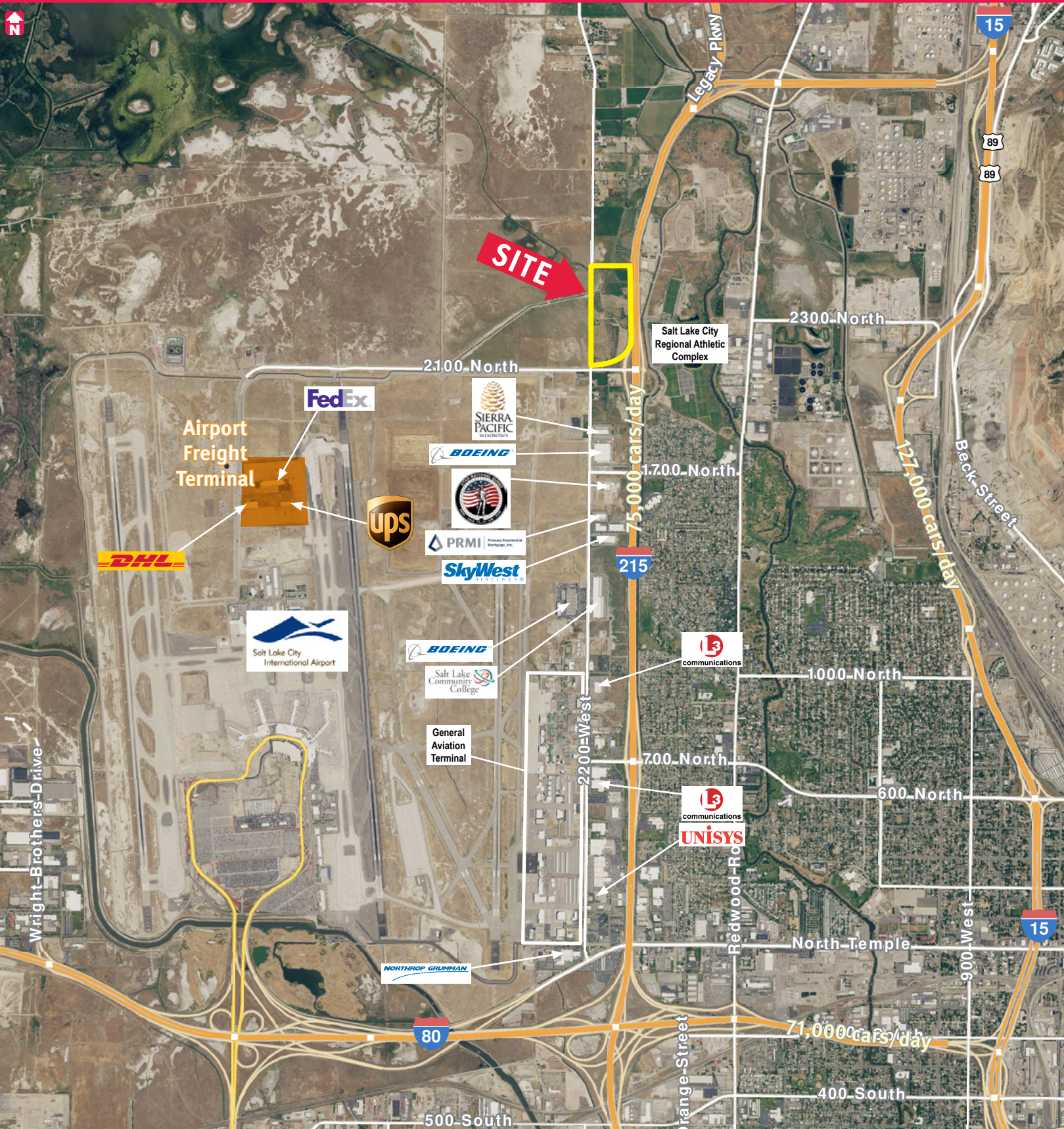


I-215 COMMERCE CENTER – PHASE I BUILDING B

2260 North 2200 West, Salt Lake City, Utah 84101

I-215 COMMERCE CENTER – PHASE I BUILDING B

2260 North 2200 West, Salt Lake City, Utah 84101



READY FOR TENANT IMPROVEMENTS



One Mile from the Salt Lake International Freight Terminal – UPS, FedEx and DHL

PROPERTY FEATURES

- 374,288 SF
- Approximately 22,100 SF per Bay
- Build-to-Suit Office
- 60 Dock High Doors
- 4 Grade Level Doors
- Column Spacing: 50'8" x 52'; 60' x 52' Staging Area
- 32' Clear Height
- 89 Trailer Parking Stalls
- 225 Parking Stalls
- Prime Freeway Exposure
- Quick Access to I-215 and Legacy Highway
- 10 Minutes from the Salt Lake International Airport, 9 Minutes from Downtown Salt Lake City and 14 Minutes from the Intermodal Yard

AVAILABLE
374,288 SF

FOR MORE
INFORMATION
CONTACT

STEVE CONDIE, CCIM, SIOR
801.809.5000
scondie@ngacres.com

I-215 COMMERCE CENTER – PHASE I BUILDING B

2260 North 2200 West, Salt Lake City, Utah 84101

