

PEPPER GROVE BUSINESS PARK
1609 GROVE AVENUE / 1240-1260 E. LOCUST ST.
ONTARIO, CA 91761
(310) 264-1650



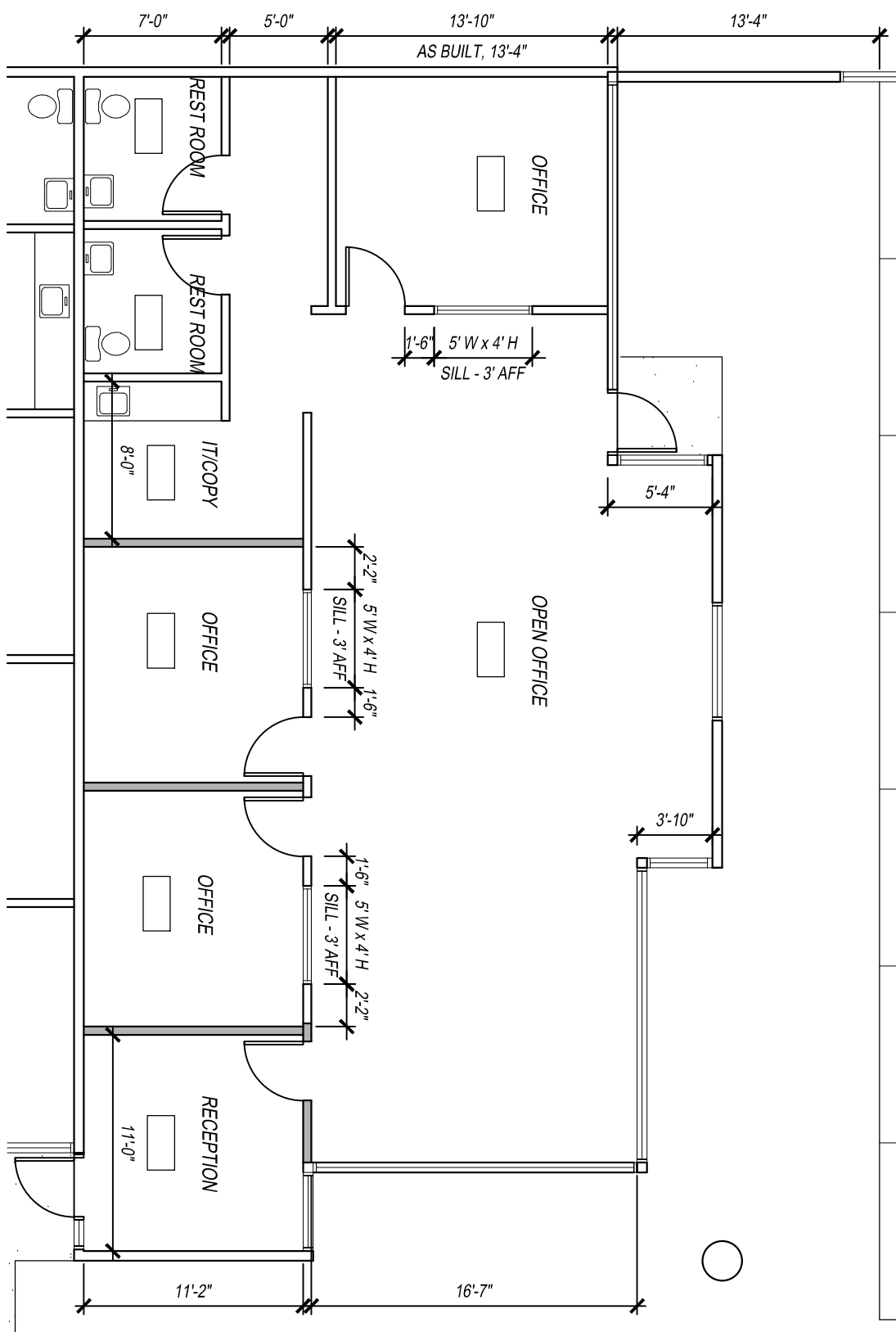
84571 square foot Business Park on Grove Avenue between the 60 and 10 freeways. Well-maintained park with ample parking, approx 21-24 clear height, dock high and 12X14 ground level doors. Each unit has 200 amps of 3-phase power. M-2.5 zoning. Most units have been completely remodeled and have energy efficient lighting and efficient HVAC systems.

SPACE AVAILABLE

<u>BUILDING/SUITE</u>	<u>RENTABLE SF</u>	<u>RATE/SF</u>	<u>DATE AVAILABLE</u>	<u>DESCRIPTION</u>
<u>1609 Grove Avenue</u>				
Suite 112	1,950	\$1.25	30 Days	ALL OFFICE UNIT Reception area, three private offices, Kitchen / copy room / 2 restrooms. End cap unit with plenty of natural light.
<u>1240 E. Locust Street</u>				
Suite 202	1,944	\$0.90	Now	OFFICE / WAREHOUSE UNIT Reception area, two private offices, And warehouse with 12 x 14 loading door.
<u>1260 E. Locust Street</u>				
NOTHING AVAILABLE				

For More Information Call: Ned Geoghegan (310) 264-1650

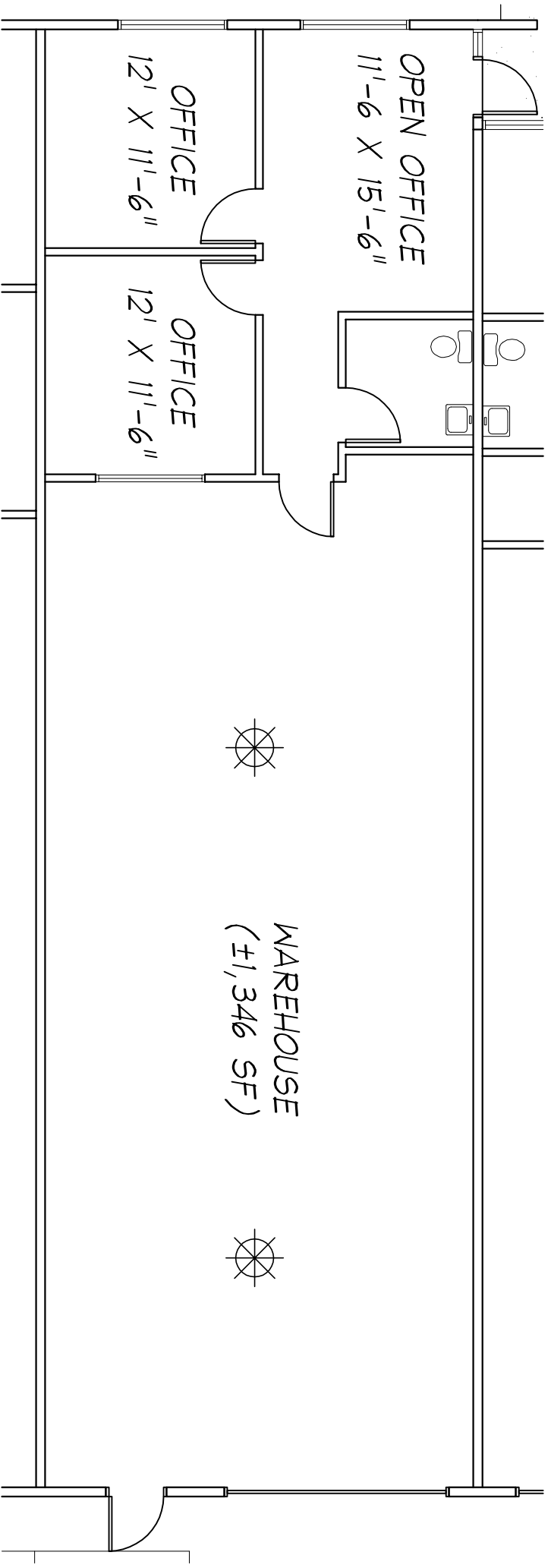
CAM = \$0.10 PSF



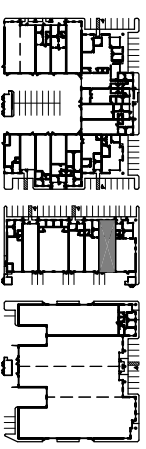
PEPPER GROVE BUSINESS CENTER - SUITE 112

1609 Grove Ave ONTARIO, CA

Scale: 1/8" = 1'-0"



KEY PLAN



PEPPER GROVE BUSINESS CENTER

SUITE #202

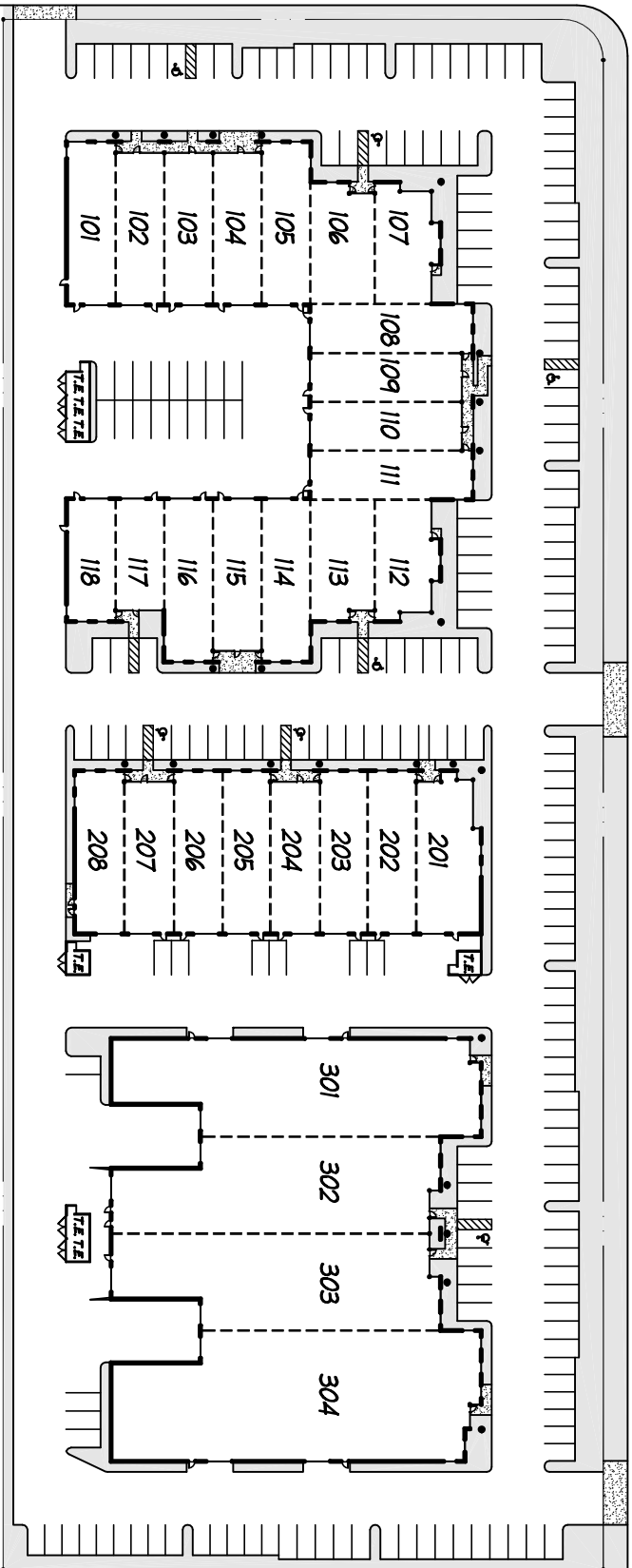
1609 GROVE AVE. ONTARIO, CA

1/8" = 1'-0"

SANDHILL MANAGEMENT (310) 264-1650

SOUTH GROVE AVE

EAST LOCUST STREET



PEPPER GROVE BUSINESS CENTER

ONTARIO, CA

