



WILD BASIN I

110 Wild Basin Road - 78746



Available Space

Suite	RSF
150*	4,467
210	4,270
250	8,031
270	4,882
350**	2,651
360**	1,615

**Available August 2022*

***Spec Suites Available August 2022*

Building Features



3.5:1000 Parking



Covered Parking Available



Balcony Views of Downtown & Greenbelt



Upgraded Common Areas



Building Conference Room



Renovated Restrooms

RICHARD PADDOCK
(512) 538-0057
paddock@hpitx.com

J.D. LEWIS
(512) 538-0064
jdlewis@hpitx.com

No warranty or representation, expressed or implied, is made as to the accuracy of the information contained herein, and same is submitted subject to errors, omissions, change of price, rental or other conditions, withdrawal without notice, and to any special listing conditions imposed by the principals.



WILD BASIN I

2nd Floor

SUITE 150

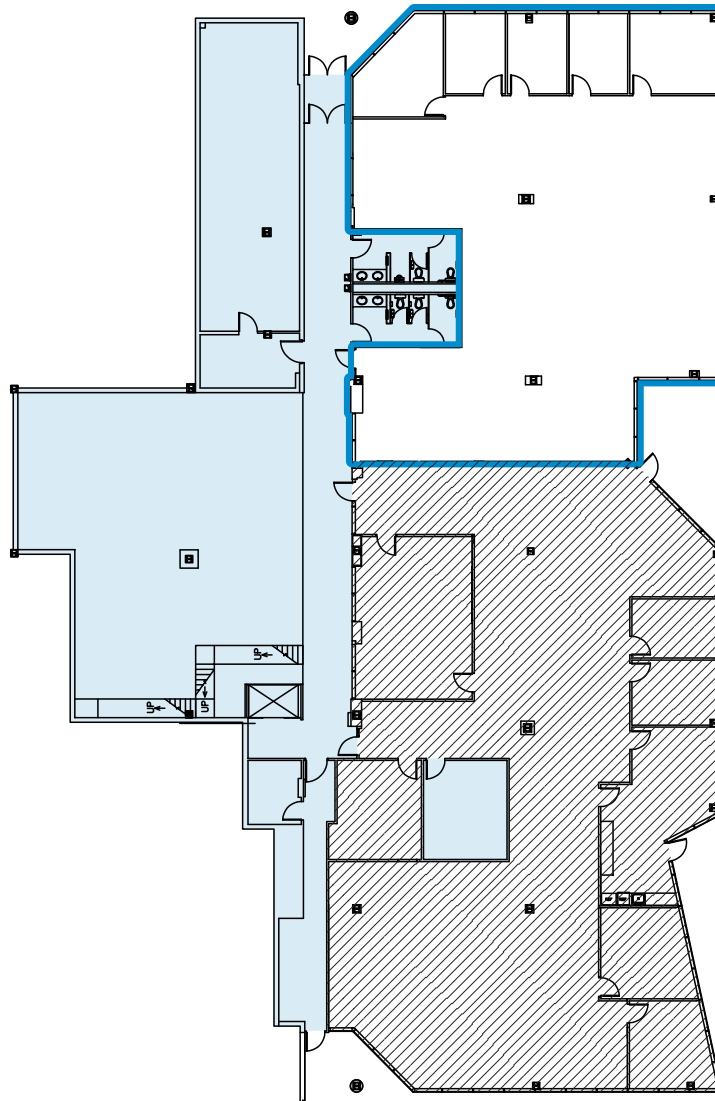
AVAILABLE AUG. 2022

4,467 SF

AVAILABLE SF

OPEN OFFICE

SPACE TYPE



RICHARD PADDOCK
(512) 538-0057
paddock@hpitx.com

J.D. LEWIS
(512) 538-0064
jdlewis@hpitx.com

No warranty or representation, expressed or implied, is made as to the accuracy of the information contained herein, and same is submitted subject to errors, omissions, change of price, rental or other conditions, withdrawal without notice, and to any special listing conditions imposed by the principals.



WILD BASIN I

2nd Floor

SUITE 210

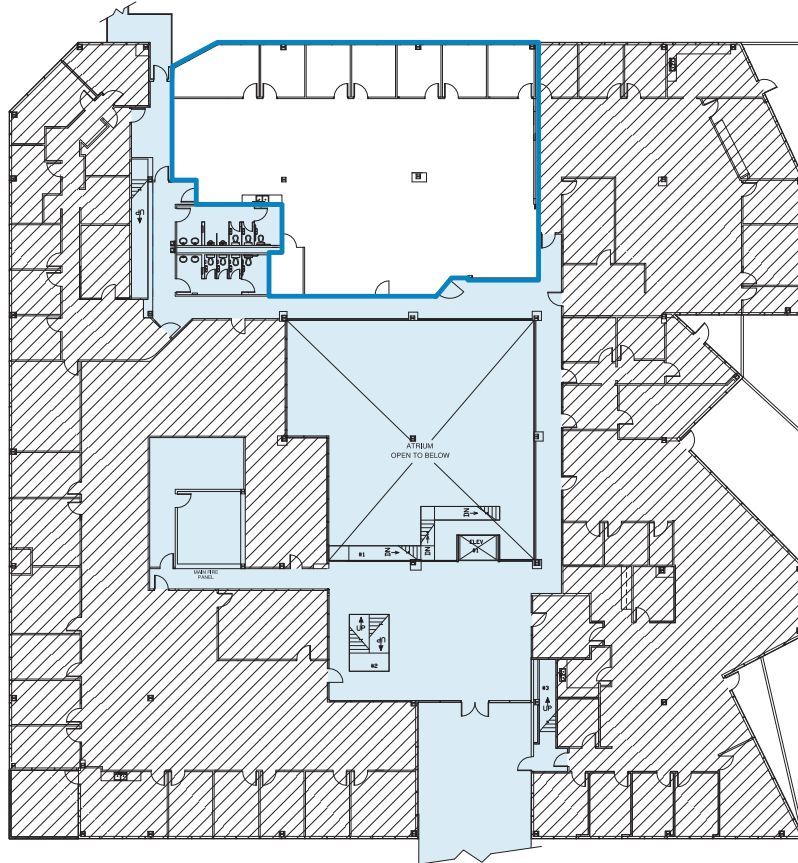
AVAILABLE NOW

4,270 SF

AVAILABLE SF

OPEN OFFICE

SPACE TYPE



RICHARD PADDOCK
(512) 538-0057
paddock@hpitx.com

J.D. LEWIS
(512) 538-0064
jdlewis@hpitx.com

No warranty or representation, expressed or implied, is made as to the accuracy of the information contained herein, and same is submitted subject to errors, omissions, change of price, rental or other conditions, withdrawal without notice, and to any special listing conditions imposed by the principals.



WILD BASIN I

2nd Floor

SUITE 250

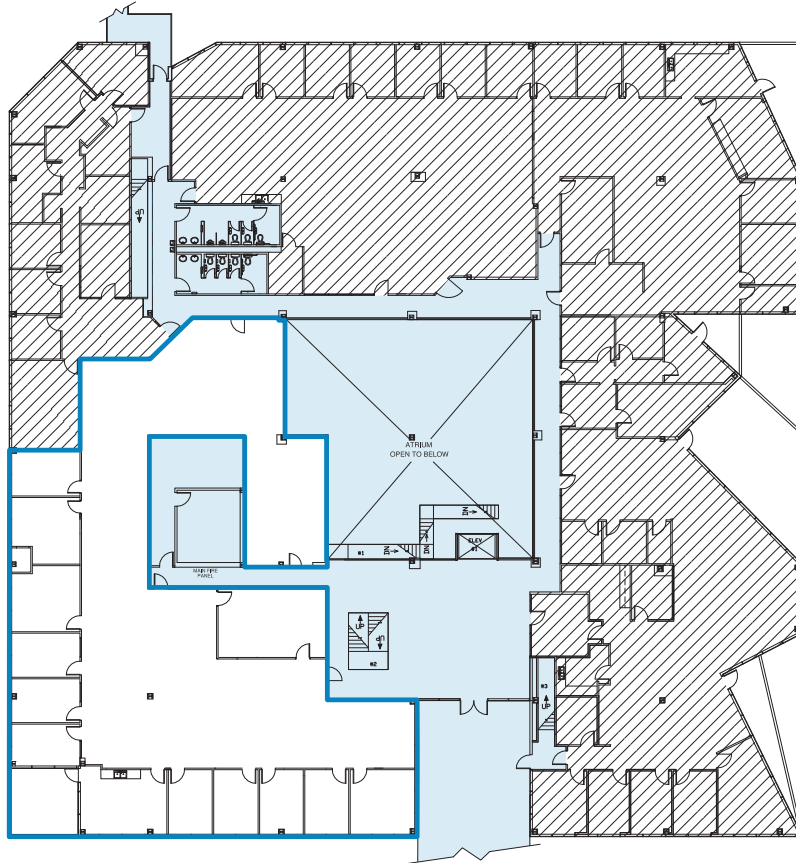
AVAILABLE NOW

8,031 SF

AVAILABLE SF

OPEN OFFICE

SPACE TYPE



RICHARD PADDOCK
(512) 538-0057
paddock@hpitx.com

J.D. LEWIS
(512) 538-0064
jdlewis@hpitx.com

No warranty or representation, expressed or implied, is made as to the accuracy of the information contained herein, and same is submitted subject to errors, omissions, change of price, rental or other conditions, withdrawal without notice, and to any special listing conditions imposed by the principals.



WILD BASIN I

2nd Floor

SUITE 270

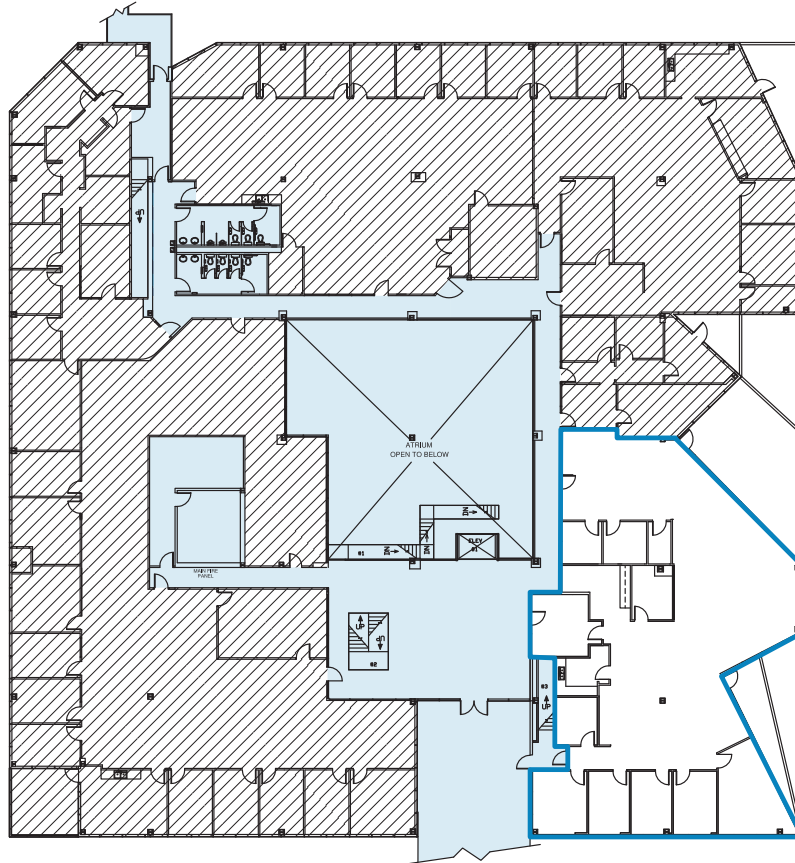
AVAILABLE NOW

4,882 SF

AVAILABLE SF

OPEN OFFICE

SPACE TYPE



RICHARD PADDOCK
(512) 538-0057
paddock@hpitx.com

J.D. LEWIS
(512) 538-0064
jdlewis@hpitx.com

No warranty or representation, expressed or implied, is made as to the accuracy of the information contained herein, and same is submitted subject to errors, omissions, change of price, rental or other conditions, withdrawal without notice, and to any special listing conditions imposed by the principals.



WILD BASIN I

2nd Floor

SUITE 350

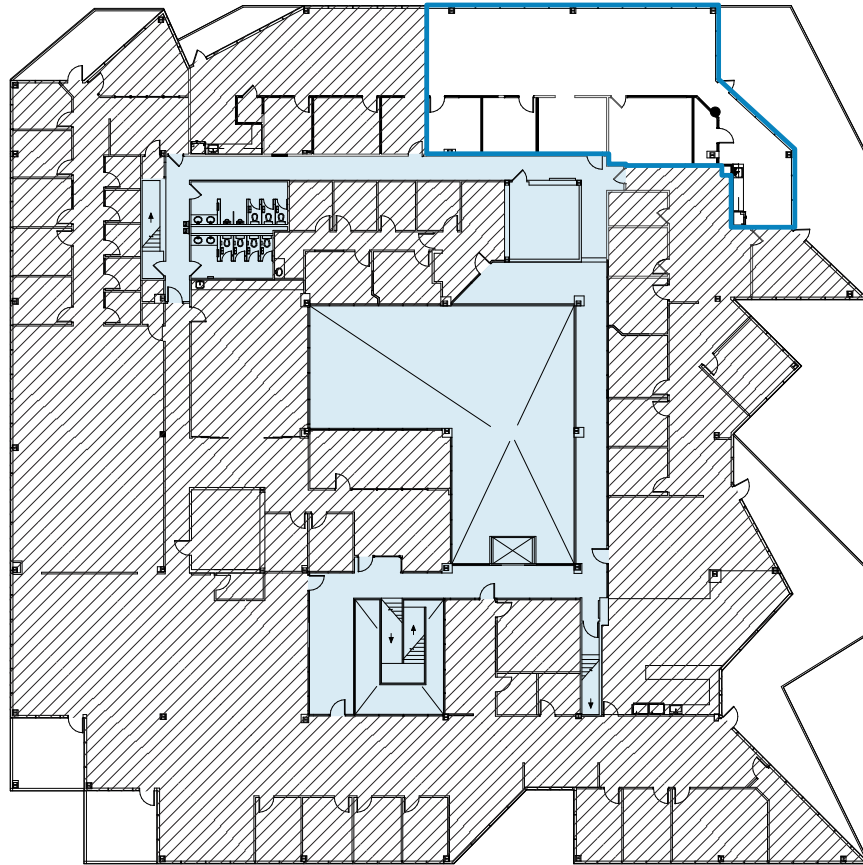
AVAILABLE AUG. 2022

2,651 SF

AVAILABLE SF

OPEN OFFICE

SPACE TYPE



Spec Suite

RICHARD PADDOCK
(512) 538-0057
paddock@hpitx.com

J.D. LEWIS
(512) 538-0064
jdlewis@hpitx.com

No warranty or representation, expressed or implied, is made as to the accuracy of the information contained herein, and same is submitted subject to errors, omissions, change of price, rental or other conditions, withdrawal without notice, and to any special listing conditions imposed by the principals.



WILD BASIN I

2nd Floor

SUITE 360

AVAILABLE AUG. 2022

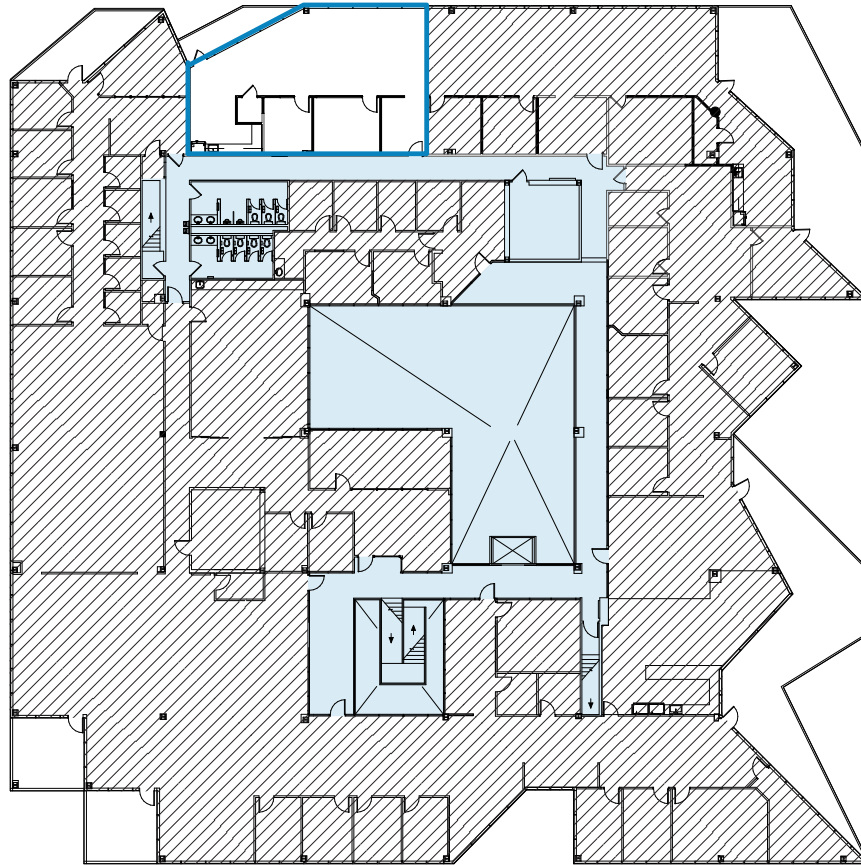
1,615 SF

AVAILABLE SF

OPEN OFFICE

SPACE TYPE

Spec Suite



RICHARD PADDOCK
(512) 538-0057
paddock@hpitx.com

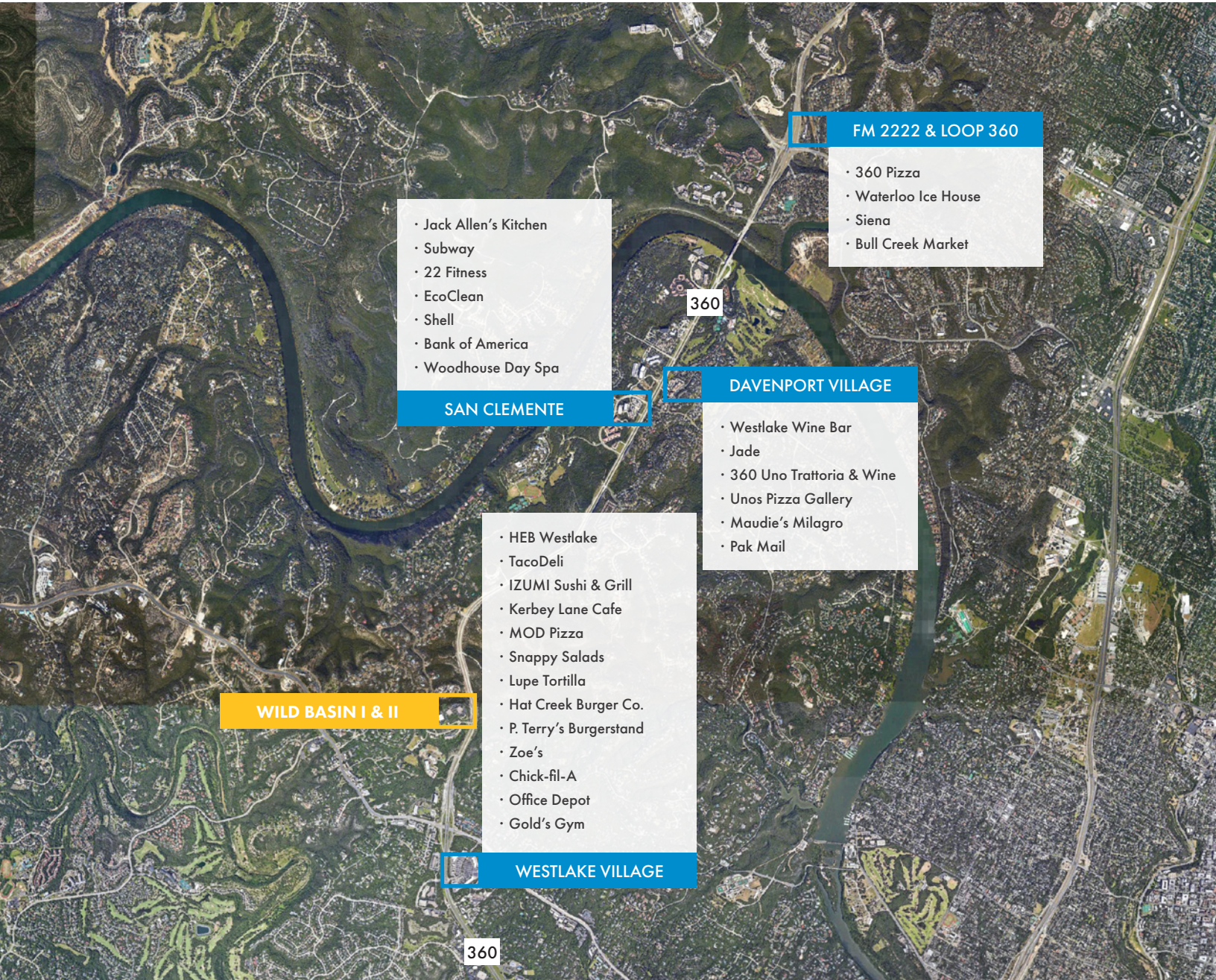
J.D. LEWIS
(512) 538-0064
jdlewis@hpitx.com

No warranty or representation, expressed or implied, is made as to the accuracy of the information contained herein, and same is submitted subject to errors, omissions, change of price, rental or other conditions, withdrawal without notice, and to any special listing conditions imposed by the principals.



WILD BASIN

Amenity Map



- Jack Allen's Kitchen
- Subway
- 22 Fitness
- EcoClean
- Shell
- Bank of America
- Woodhouse Day Spa

SAN CLEMENTE

- 360 Pizza
- Waterloo Ice House
- Siena
- Bull Creek Market

FM 2222 & LOOP 360

- Westlake Wine Bar
- Jade
- 360 Uno Trattoria & Wine
- Unos Pizza Gallery
- Maudie's Milagro
- Pak Mail

DAVENPORT VILLAGE

- HEB Westlake
- TacoDeli
- IZUMI Sushi & Grill
- Kerbey Lane Cafe
- MOD Pizza
- Snappy Salads
- Lupe Tortilla
- Hat Creek Burger Co.
- P. Terry's Burgerstand
- Zoe's
- Chick-fil-A
- Office Depot
- Gold's Gym

WILD BASIN I & II

WESTLAKE VILLAGE

RICHARD PADDOCK
 (512) 538-0057
 paddock@hpitx.com

J.D. LEWIS
 (512) 538-0064
 jdlewis@hpitx.com

No warranty or representation, expressed or implied, is made as to the accuracy of the information contained herein, and same is submitted subject to errors, omissions, change of price, rental or other conditions, withdrawal without notice, and to any special listing conditions imposed by the principals.