

# MEDICAL / OFFICE FOR LEASE

Available: ±1,417 SF



- **Single Story Medical/Office Building**
- **Easy Access to I-15**
- **Direct Access to Suites**
- **New Landscaping & Paint**
- **Near Numerous Retail Amenities & Restaurants**
- **Abundant Parking**
- **Low Core Factor**

## PROPERTY OVERVIEW

County: San Diego  
Sub Market: Scripps Ranch

## BUILDING DATA

Total Building SF: 32,556 SF  
Year Built: 1973, Renovated 2005  
Parking: Surface Spaces  
5/1,000 SF

## LISTING DATA

Suite 105: ±1,417 SF  
(Can expand to 2,584 SF)  
Available: Now  
Lease Rate: \$2.25 MG

**MEDICAL/OFFICE | SCRIPPS RANCH**  
9855 Erma Road | Suite 105 | San Diego, CA 92131

For more information contact:

SEAN MCNULTY | Principal  
smcnulty@lee-associates.com  
D 858.713.9325 | Lic No. 00991124

lee-associates.com

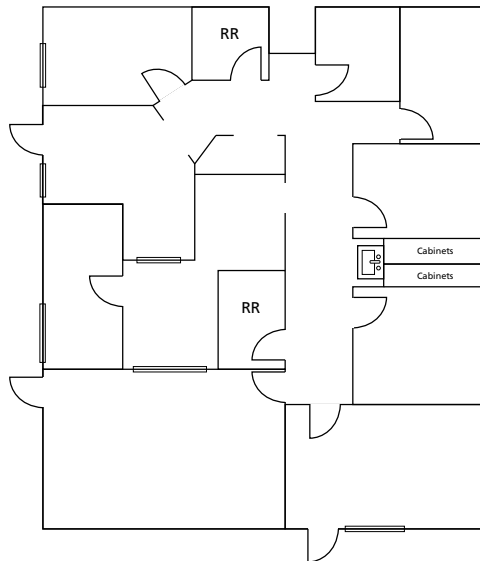


# MEDICAL / OFFICE FOR LEASE

Available: ±1,417 SF



Suite 105  
1,417 SF



All information furnished regarding property for sale, rental or financing is from sources deemed reliable, but no warranty or representation is made to the accuracy thereof and same is submitted to errors, omissions, change of price, rental or other conditions prior to sale, lease or financing or withdrawal without notice. No liability of any kind is to be imposed on the broker herein.



For more information contact:

SEAN MCNULTY | Principal  
smcnulty@lee-associates.com  
D 858.713.9325 | Lic No. 00991124

lee-associates.com

