

FULL BUILDING OPPORTUNITY PROMINENT BUILDING SIGNAGE

2233 DUNLAP

4-STORY BUILDING TOTALING ±92,000 SF



2233 WEST DUNLAP AVENUE | PHOENIX, AZ | AVAILABLE JANUARY 1, 2019



3200 East Camelback Rd.
Suite 100
Phoenix, AZ 85018
leearizona.com

John Cerchiai, SIOR
jcerchiai@leearizona.com
602-954-3763

Adam Tolson
atolson@leearizona.com
602-954-3771

Spencer Nast
snast@leearizona.com
602-912-3525


2233

DUNLAP



- Available January 1, 2019
- Full Building Opportunity
- Extensive Building & Common Area Improvements Coming Soon
- 4-Story Building Totaling ±92,000
- 7.1:1000 Parking Ratio - 2-Level Parking Structure Offering 543 Stalls and 107 Surface Parking Stalls
- Excellent Building & Monument Signage
- Best Glass Line for ±92,000 SF in the I-17 Corridor
- Excellent 360 Degree Views
- Expansive Green Space with Multiple Collaboration Areas



Minutes to Valleywide Transportation via 



High-end Multifamily Housing within Walking Distance



Grand Canyon University Talent and Workforce Nearby



1.5 Miles to Metrcocenter Mall



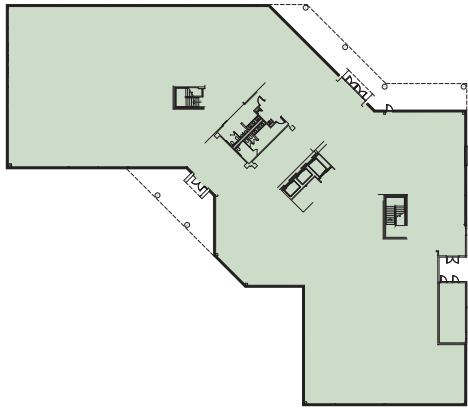
Sheraton Crescent Hotel just Minutes Away



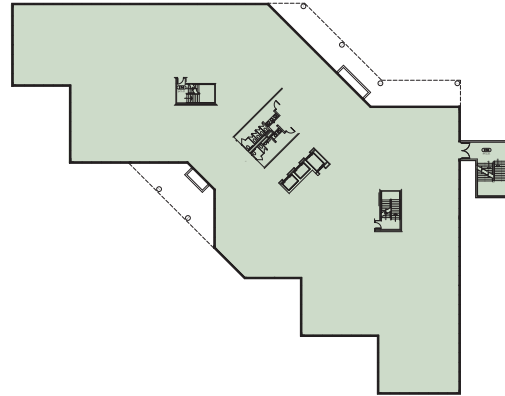
Short Walk to New Lightrail Stop and Park & Ride at 19th Ave & Dunlap



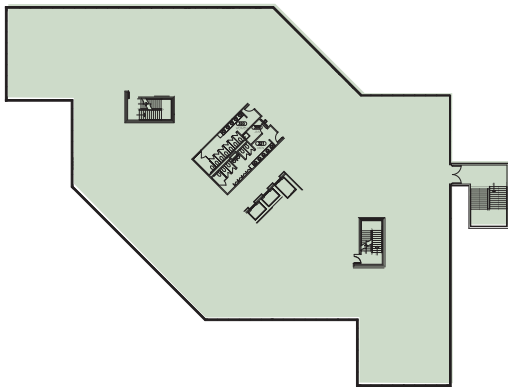
First Floor | ±22,510 SF



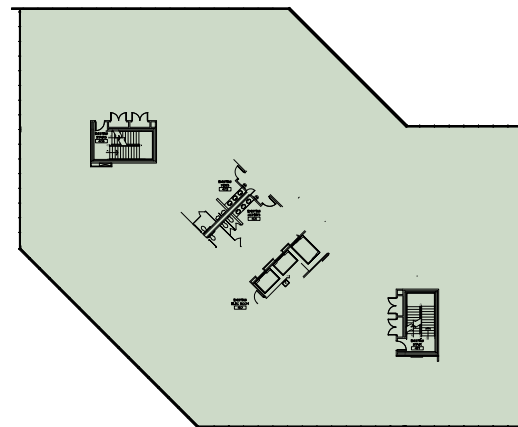
Second Floor | ±26,360 SF



Third Floor | ±23,715 RSF



Fourth Floor | ±19,518 RSF



Outstanding Corporate Neighbors:





PIESTEWA PEAK

CAMELBACK MOUNTAIN

PHX PHOENIX SKY HARBOR INTERNATIONAL AIRPORT

MIDTOWN

DOWNTOWN

EXISTING LIGHT RAIL

2233 DUNLAP

LIGHT RAIL STATION PARK & RIDE

ROSE MOFFORD SPORTS COMPLEX

FUTURE LIGHT RAIL

DUNLAP AVE.

SHERATON

TOWNE PLACE SUITES MARRIOTT

COURTYARD MARRIOTT

BLACK CANYON FREEWAY

INTERSTATE 17

FULL DIAMOND

FULL DIAMOND

METROCENTER MALL

INTERSTATE 17

27TH AVE.

GRAND CANYON

LEE & ASSOCIATES
COMMERCIAL REAL ESTATE SERVICES

3200 East Camelback Rd.
Suite 100
Phoenix, AZ 85018
leearizona.com

John Cerchiai, SIOR
jcerchiai@leearizona.com
602-954-3763

Adam Tolson
atolson@leearizona.com
602-954-3771

Spencer Nast
snast@leearizona.com
602-912-3525