

Park 184 Building 4

18439 East Valley Highway
Kent, WA

Small Industrial Space for Lease

5,100 square feet

± 1,750 square feet of office

2 grade-level doors

\$0.42 PSF shell

\$0.75 PSF office add-on, NNN

Available now



Location



Contact

Peter Wooding

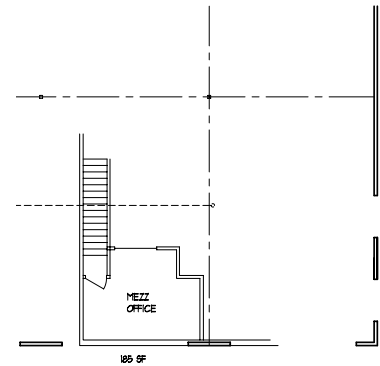
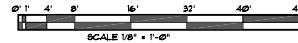
206.248.7301

pwooding@kiddermathews.com

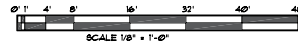
Park 184 - Building 4



MAIN FLOOR PLAN
SCALE 1/8" = 1'-0"
04-18-13



MAIN FLOOR PLAN
SCALE 1/8" = 1'-0"



Contact

Peter Wooding

206.248.7301

pwooding@kiddermathews.com