

# 5+/- Acres I-70 Frontage O'Fallon, MO



## Great Commercial Development Potential

High Visibility to Interstate 70

445' of Road Frontage

All Utilities available to Site

2 Miles West of Lake St. Louis Blvd. Interchange

Zoned C-3 Highway Commercial

Additional 18 Acres Available

**\$3/Sq. ft.**



636-462-5555

www.meyerlistings.com

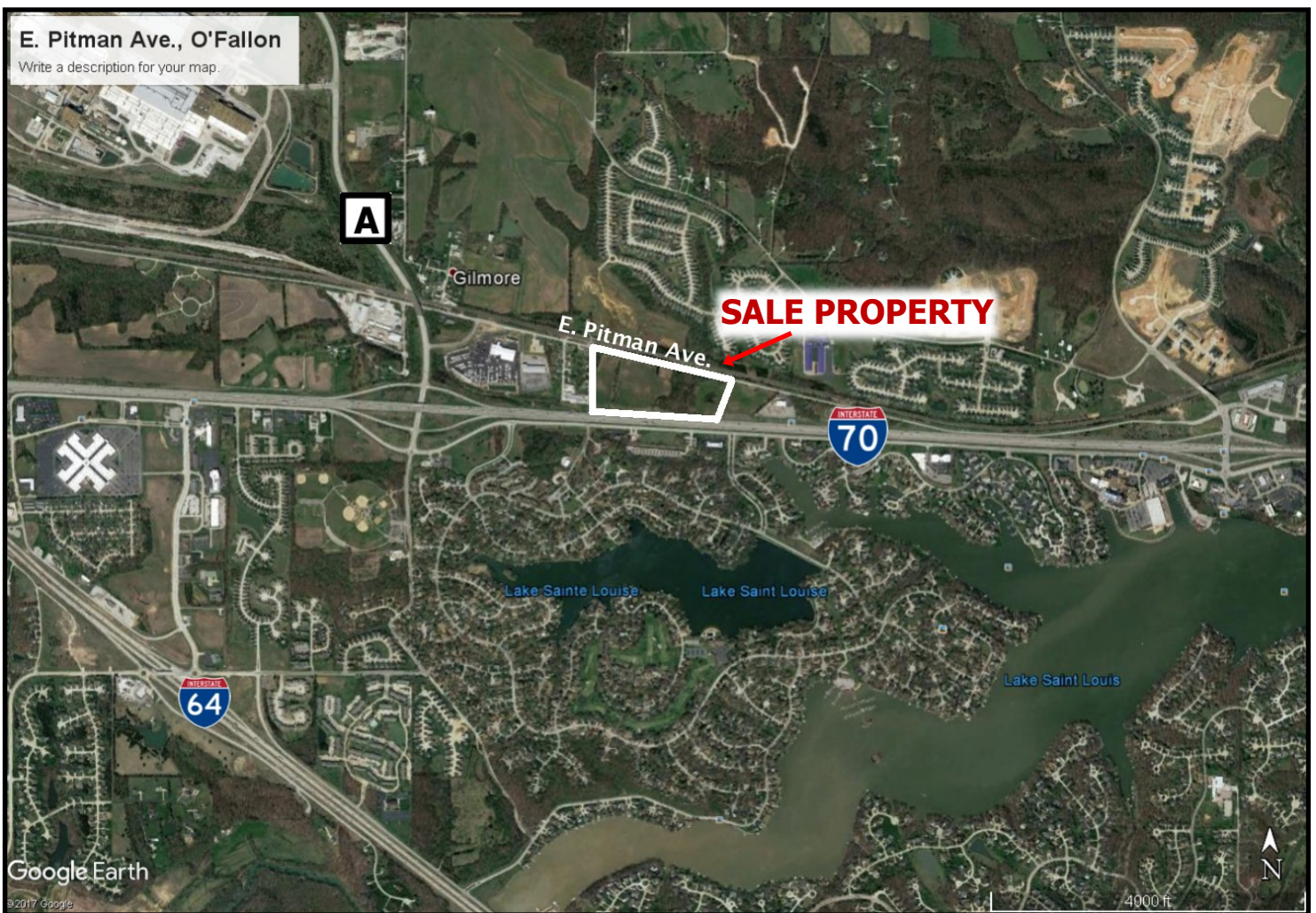


314-853-0097

www.leahypropertiesllc.com

## E. Pitman Ave., O'Fallon

Write a description for your map.



### E. PITMAN AVE SEWER



### E. PITMAN AVE WATER



**From I-70 and Lake St. Louis Blvd. take North Service Rd (E. Pitman Ave.) going west 1.5 miles to property on Right.**

**MEYER & COMPANY REAL ESTATE**  
192 N. Lincoln Drive  
Troy, MO 63379

**636-462-5555**

**[www.meyerlistings.com](http://www.meyerlistings.com)**