

# BALTASAR LAKESIDE MEDICAL CENTER

1561 W. Fairbanks Ave

Winter Park, FL 32789

FOR SUBLEASE

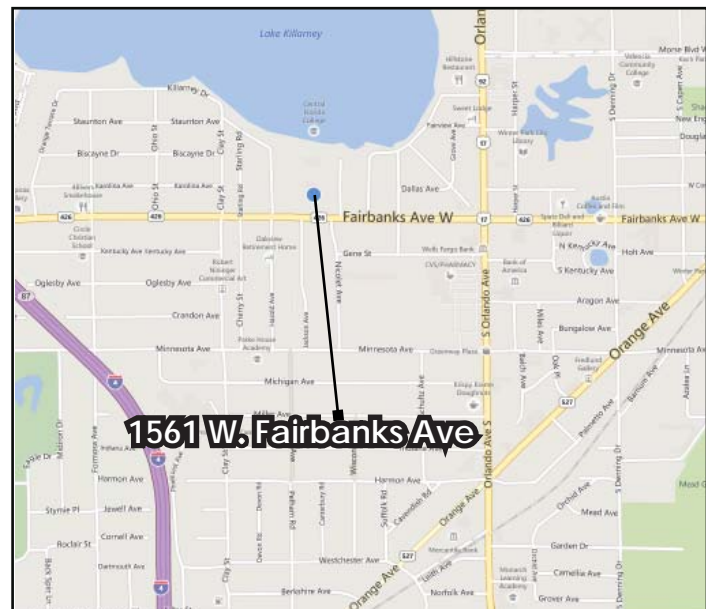


## FEATURES:

- ◆ Available for immediate sublease
- ◆ Suite 200: 5,424 SF
- ◆ Class "A" medical office complex
- ◆ Entire second floor available in front building
- ◆ Walk-in ready medical space
- ◆ Upgraded finishes and new paint in place
- ◆ Desirable Winter Park address with quick access to I-4

## FINANCIAL INFORMATION:

- ◆ Rate: \$18.36 NNN
- ◆ CAM: \$6.36/SF
- ◆ Expiration: 11/30/21



4700 Millenia Blvd  
Suite 200  
Orlando, FL 32839  
ph: 321.281.8500 fx: 321.281.8519  
www.lee-associates.com

LOCAL EXPERTISE. NATIONAL REACH. WORLD CLASS

All information furnished regarding property for sale, rental or financing is from sources deemed reliable, but no warranty or representation is made to the accuracy thereof and the same is submitted to errors, omissions, change of price, rental or other conditions prior to sale, lease or financing or withdrawal without notice. No liability of any kind is to be imposed on the broker herein.

Jason Bantel, CCIM

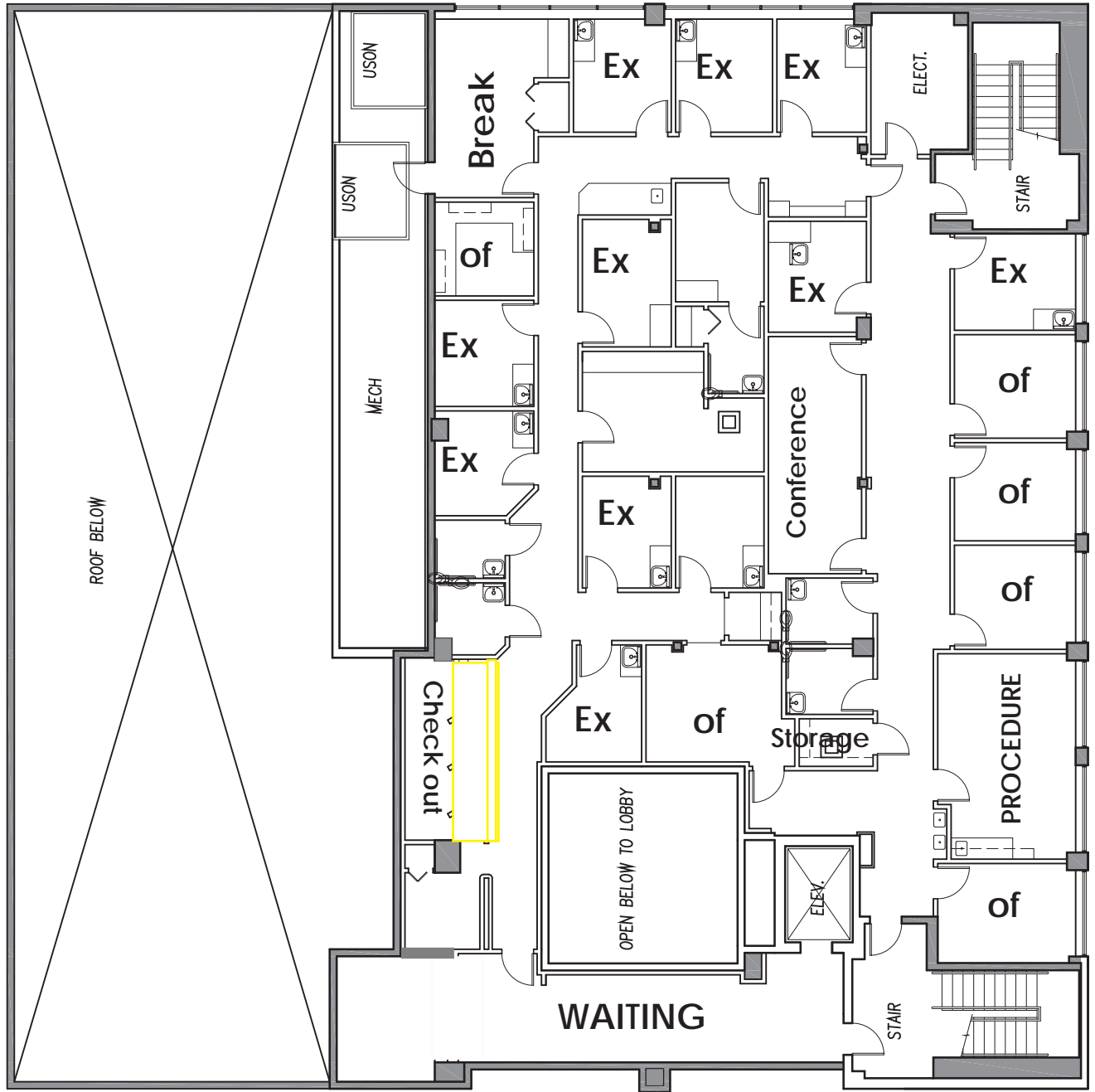
321.281.8509

jbantel@lee-associates.com

# BALTASAR LAKESIDE MEDICAL CENTER

1561 W. Fairbanks Ave

Winter Park, FL 32789



1561 Building  
5,424 RSF

46 x 10



LOCAL EXPERTISE. NATIONAL REACH. WORLD CLASS

All information furnished regarding property for sale, rental or financing is from sources deemed reliable, but no warranty or representation is made to the accuracy thereof and the same is submitted to errors, omissions, change of price, rental or other conditions prior to sale, lease or financing or withdrawal without notice. No liability of any kind is to be imposed on the broker herein.

4700 Millenia Blvd  
Suite 200  
Orlando, FL 32839  
ph: 321.281.8500 fx: 321.281.8519  
www.lee-associates.com

Jason Bantel, CCIM

321.281.8509

[jbantel@lee-associates.com](mailto:jbantel@lee-associates.com)