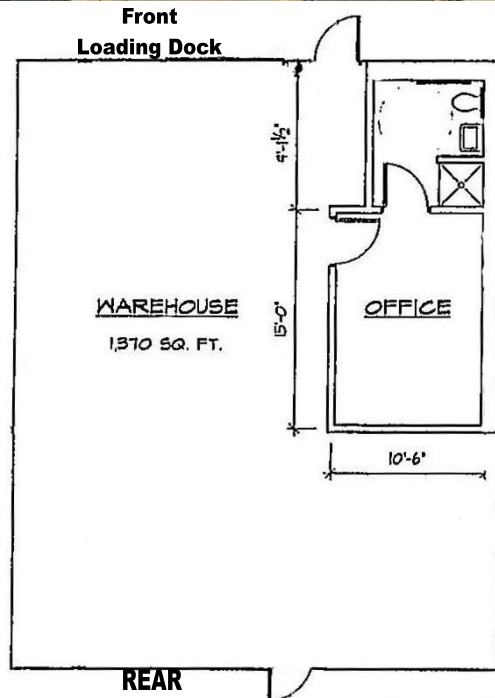


# For Sublease



## 25 East Otterson Street, Unit C Nashua, NH 03060

- Small light industrial/ flex unit with a loading dock
- 1,370± sf unit is wide open with a small office and bathroom
- Zoning: Downtown 3/ Mixed Use – allows for a variety of uses
- Utilities:
  - Pennichuck water
  - Municipal sewer
  - Natural gas
- On-site parking
- Building 1 is the new home of Vertical Dreams climbing gym
- Located a block from Main Street and Southern NH Medical Center



*For additional information,  
please contact:*

**Neal Barrett**  
603.206.9608 direct  
npb@grubbellisne.com

**Bob Cavanna**  
603.206.9620 direct  
rjc@grubbellisne.com

175 Canal Street | Suite 401 | Manchester, NH 03101  
Main 603.623.0100 | Fax 603.626.1983

[www.grubbellisne.com](http://www.grubbellisne.com)

The information contained herein is from sources deemed reliable, but is not guaranteed by Grubb & Ellis|Northern New England (G&E|NNE). G&E|NNE assumes no responsibility for matters legal in character, nor does it render an opinion as to the title, which is assumed to be good. All data is subject to change of price, error, omissions, other conditions or withdrawal without notice. G&E|NNE welcomes the cooperation of other licensed real estate brokers who properly register a buyer or tenant with whom a sale or lease is consummated. G&E|NNE is acting as the Seller's/Lessor's agent in the marketing of this property. Independently owned and operated.

**Sublease, Unit C:  
\$995/month +  
tenant utilities**