

For Lease

Warehouse/Office



1114 N. Fancher Rd.

Spokane Valley, Washington 99212

Property Description

Unit #6 Available June 1, 2020

1,440 SF +/-

12' x 14' OHD

3-Phase 200 Amps of Power

Fire Sprinklers

HVAC in Office Area

Heated Warehouse

Zoning: Industrial



For more information

Jim Orcutt

O: 509 622 3558

jorcutt@naiblack.com

Darren Slackman, SIOR

O: 509 622 3595

dslackman@naiblack.com

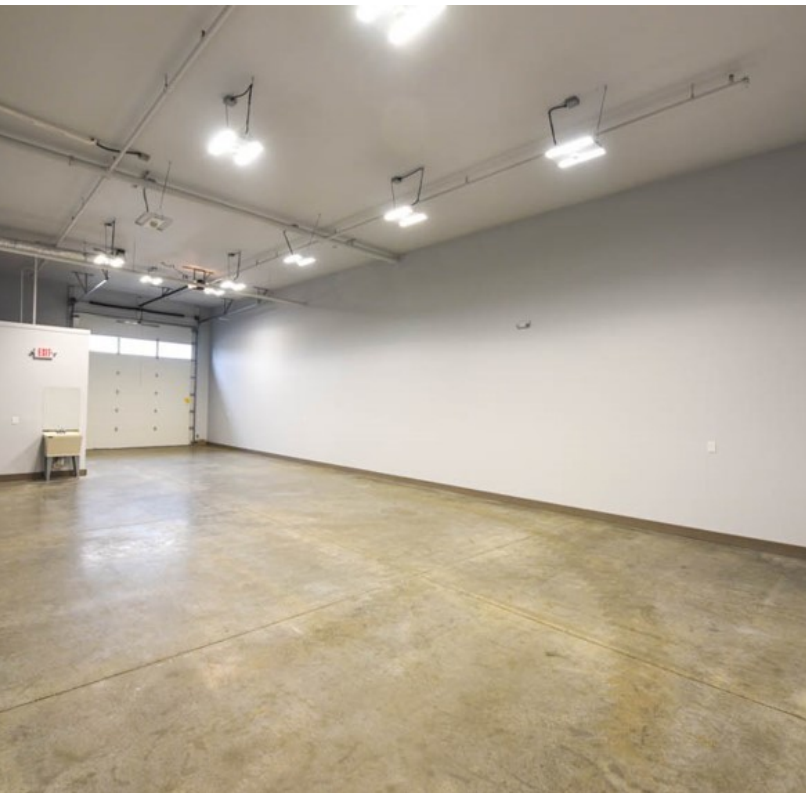
Lease Rate: \$1,300 per month (MG)

No warranty or representation, expression or implied, is made as to the accuracy of the information contained herein, and the same is submitted subject to errors, omissions, change or price, rental or other conditions, prior to sale, lease, financing, or withdrawal without notice, and of special listing conditions imposed by our principals no warranties or representations are made as to the condition of the property or any hazards contained therein or any to be implied.

801 W. Riverside Avenue, Suite 300
Spokane, WA 99201
509 623 1000 tel
naiblack.com

For Lease
Warehouse/Office

NAI Black

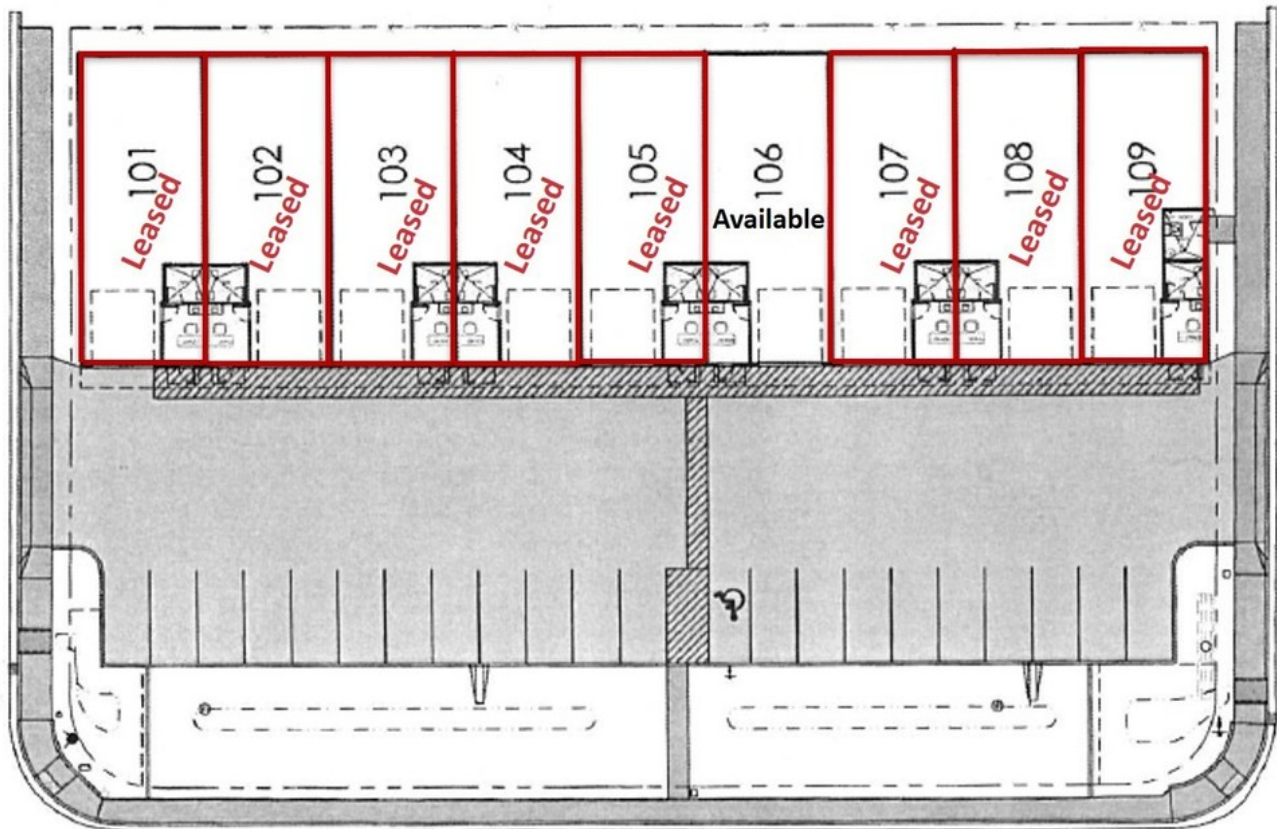
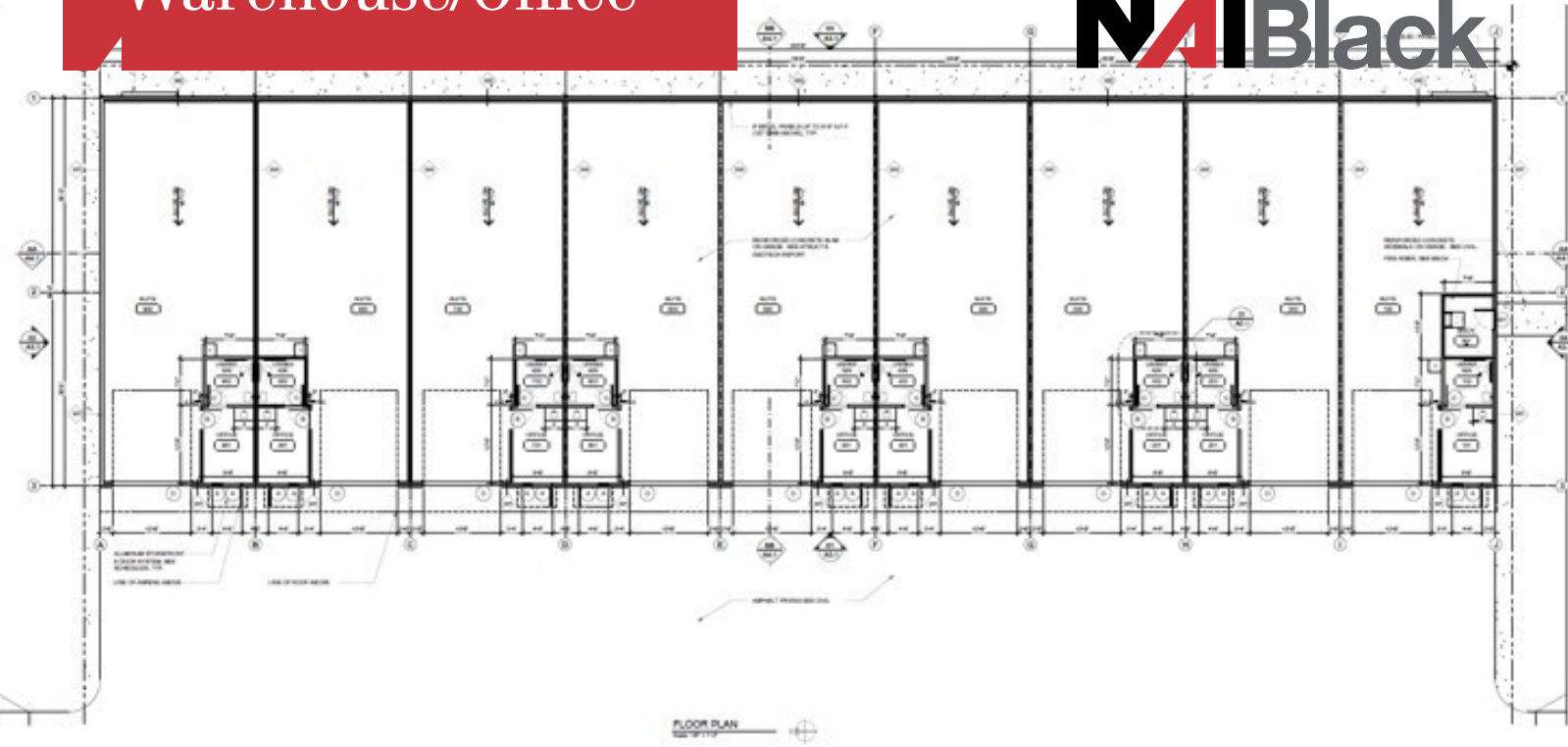


No warranty or representation, expression or implied, is made as to the accuracy of the information contained herein, and the same is submitted subject to errors, omissions, change or price, rental or other conditions, prior to sale, lease, financing, or withdrawal without notice, and of special listing conditions imposed by our principals no warranties or representations are made as to the condition of the property or any hazards contained therein or any to be implied.

801 W. Riverside Avenue, Suite 300
Spokane, WA 99201
509 623 1000 tel
naiblack.com

For Lease
Warehouse/Office

NAIBlack



No warranty or representation, expression or implied, is made as to the accuracy of the information contained herein, and the same is submitted subject to errors, omissions, change or price, rental or other conditions, prior to sale, lease, financing, or withdrawal without notice, and of special listing conditions imposed by our principals no warranties or representations are made as to the condition of the property or any hazards contained therein or any to be implied.

801 W. Riverside Avenue, Suite 300
Spokane, WA 99201
509 623 1000 tel
naiblack.com