

FOR LEASE

SANTA FE BUSINESS CENTER

175 BOSSTICK BOULEVARD &
2910, 2920, & 2930 NORMAN STRASSE ROAD, SAN MARCOS, CA 92069

INDUSTRIAL BUSINESS PARK

2910

UNIVERSAL QUARTZ, INC.

UNIVERSAL QUARTZ, INC.

SANTA FE BUSINESS CENTER

175 BOSSTICK BOULEVARD &
2910, 2920, & 2930 NORMAN STRASSE ROAD, SAN MARCOS, CA 92069



175 BOSSTICK BLVD.



2910 NORMAN STRASSE RD.



2920 NORMAN STRASSE RD.



2930 NORMAN STRASSE RD.

PROJECT SUMMARY

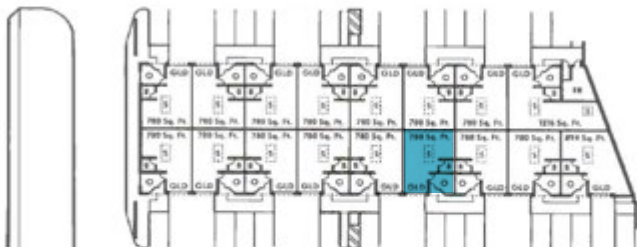
- Class B Industrial Manufacturing Buildings
- Suite size from 780 SF to 3216 SF
- Minimal office build-out with restrooms in each suite
- Grade level loading doors
- Convenient access to Highway 78
- Built in 1990
- Zoning: IP; San Marcos
- Parking: 2.0/1,000

SITE PLAN & AVAILABILITIES

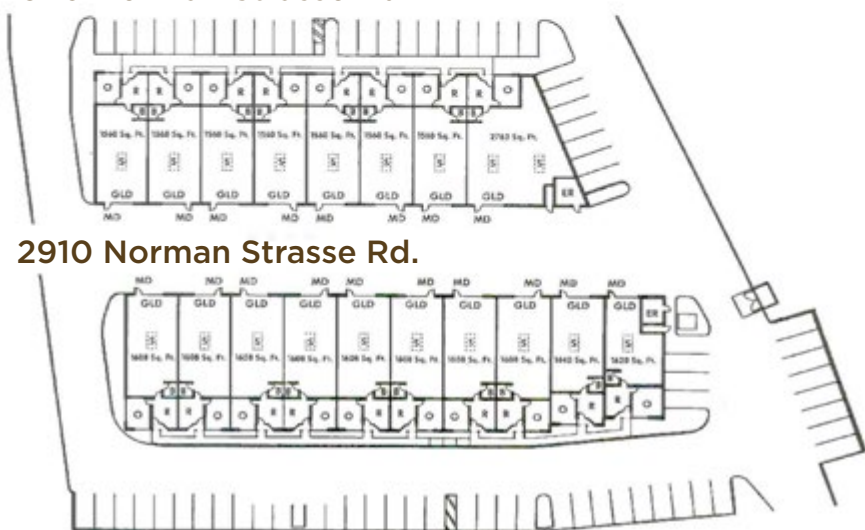
175 Bosstick Blvd.



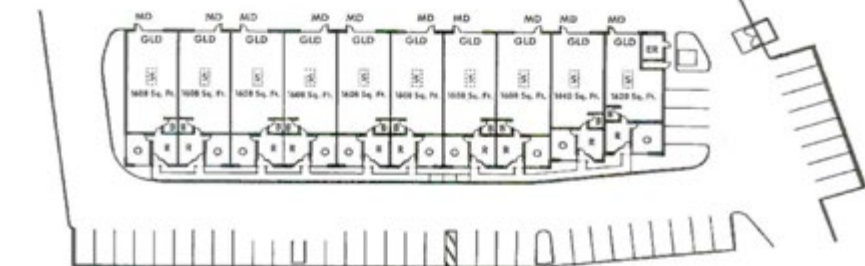
2930 Norman Strasse Rd.



2920 Norman Strasse Rd.



2910 Norman Strasse Rd.



ADDRESS	SF	DESCRIPTION	LEASE RATE	AVAILABLE
2930 Norman Strasse Rd. Ste. 112	780 SF	Reception, office, restroom & warehouse	\$1.15/SF MG	Now
175 Bosstick Ste. 104*	1,176 SF	Reception, office, restroom & warehouse	\$1.10/SF MG	Now

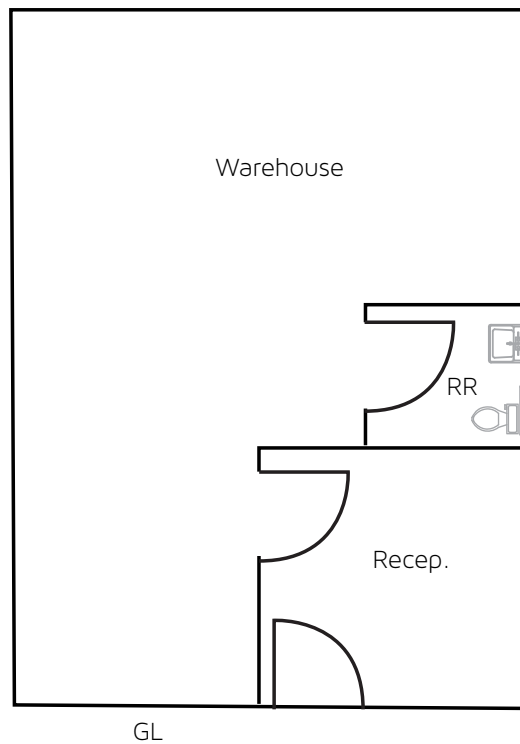
Each suite will be charged an \$0.08/SF CAM fee

*Lockbox location

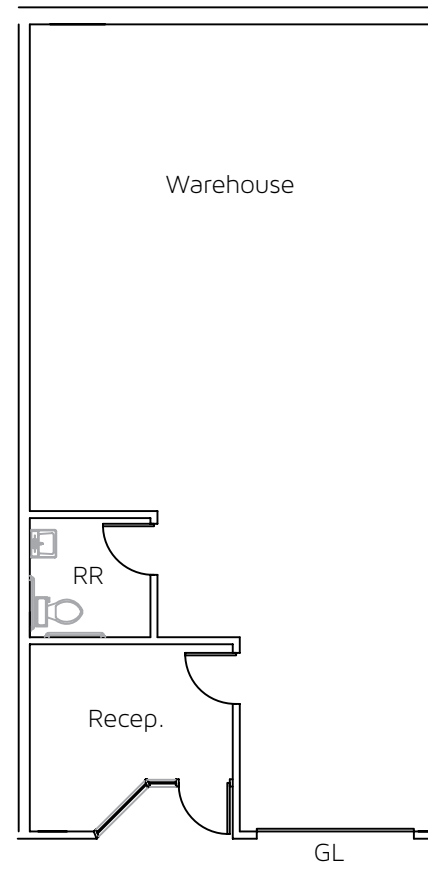


FLOOR PLANS

2930 NORMAN STRASSE RD.
SUITE 112



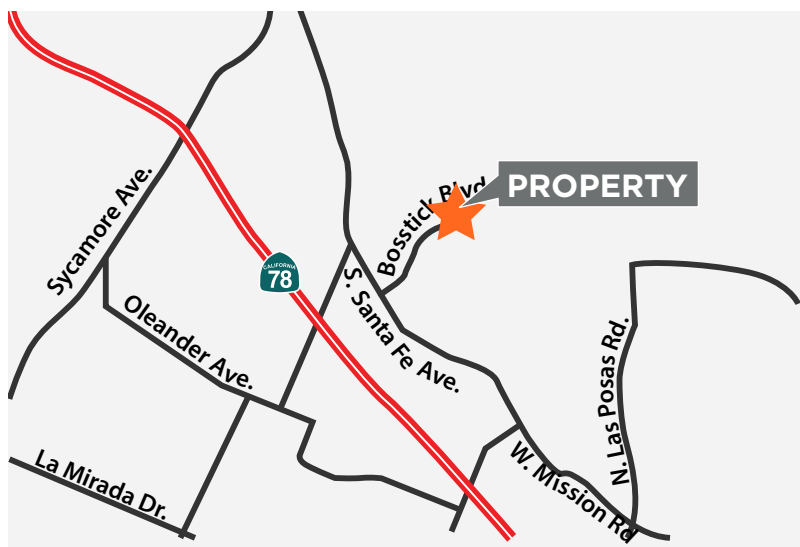
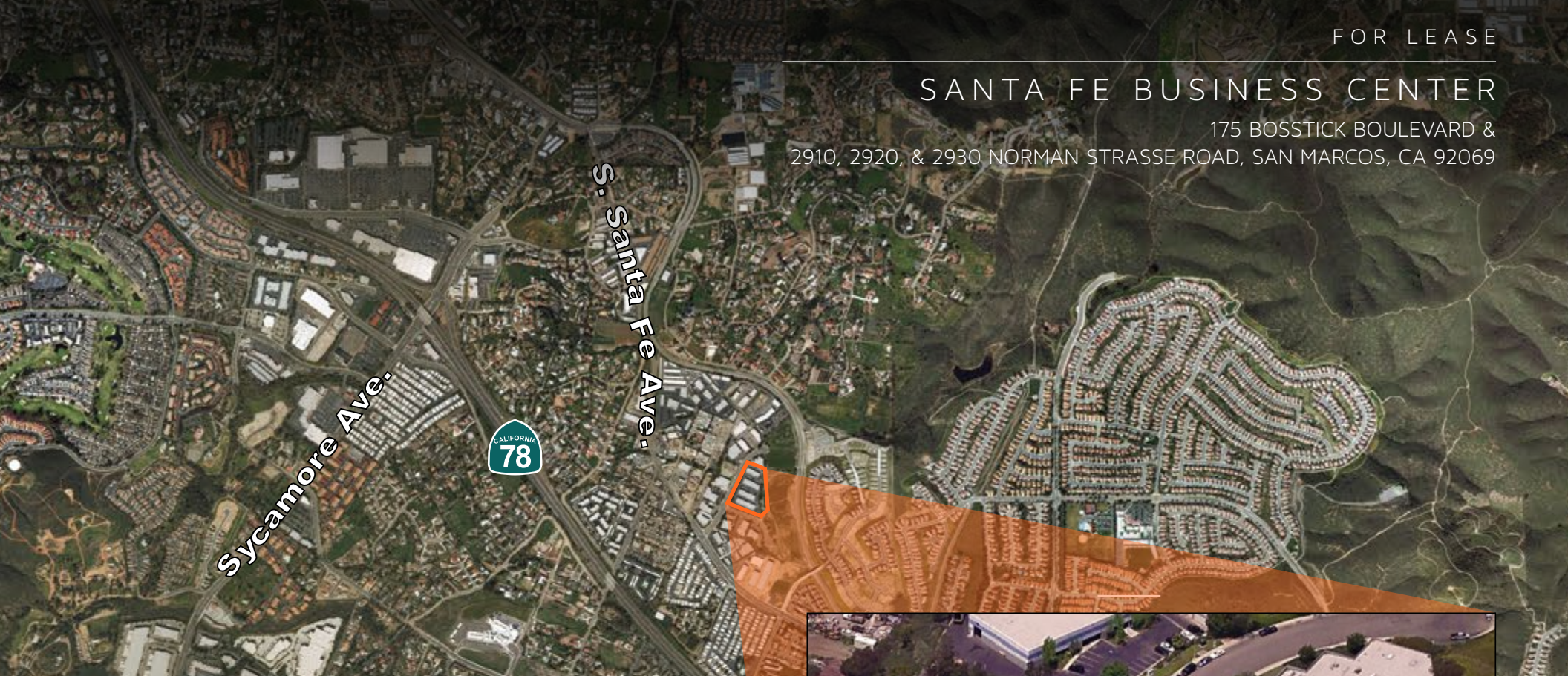
175 BOSSTICK
SUITE 104



FOR LEASE

SANTA FE BUSINESS CENTER

175 BOSSTICK BOULEVARD &
2910, 2920, & 2930 NORMAN STRASSE ROAD, SAN MARCOS, CA 92069



FOR LEASE

SANTA FE BUSINESS CENTER

175 BOSSTICK BOULEVARD &
2910, 2920, & 2930 NORMAN STRASSE ROAD, SAN MARCOS, CA 92069



INDUSTRIAL LEASING



TODD DAVIS

+1 858 369 3049

tdavis@kiddermathews.com

LIC #01383147

5927 Priestly Dr Suite 101,
Carlsbad, CA 92008
kiddermathews.com

This information supplied herein is from sources we deem reliable. It is provided without any representation, warranty or guarantee, expressed or implied as to its accuracy. Prospective Buyer or Tenant should conduct an independent investigation and verification of all matters deemed to be material, including, but not limited to, statements of income and expenses. Consult your attorney, accountant, or other professional advisor.