

**4B Inverness Court East
Englewood, Colorado 80112**

Property Highlights

- Inverness Golf Course Views
- Abundant Surface & Reserved Garage Parking
- Convenient to hotels, restaurants, banking and other services
- Within 1 mile of Park Meadows Regional Mall
- Close proximity to County Line Light Rail Station

4B



rise
expectations elevated.

RANDY SWEARINGEN
rswearingen@risecps.com
303.521.7354

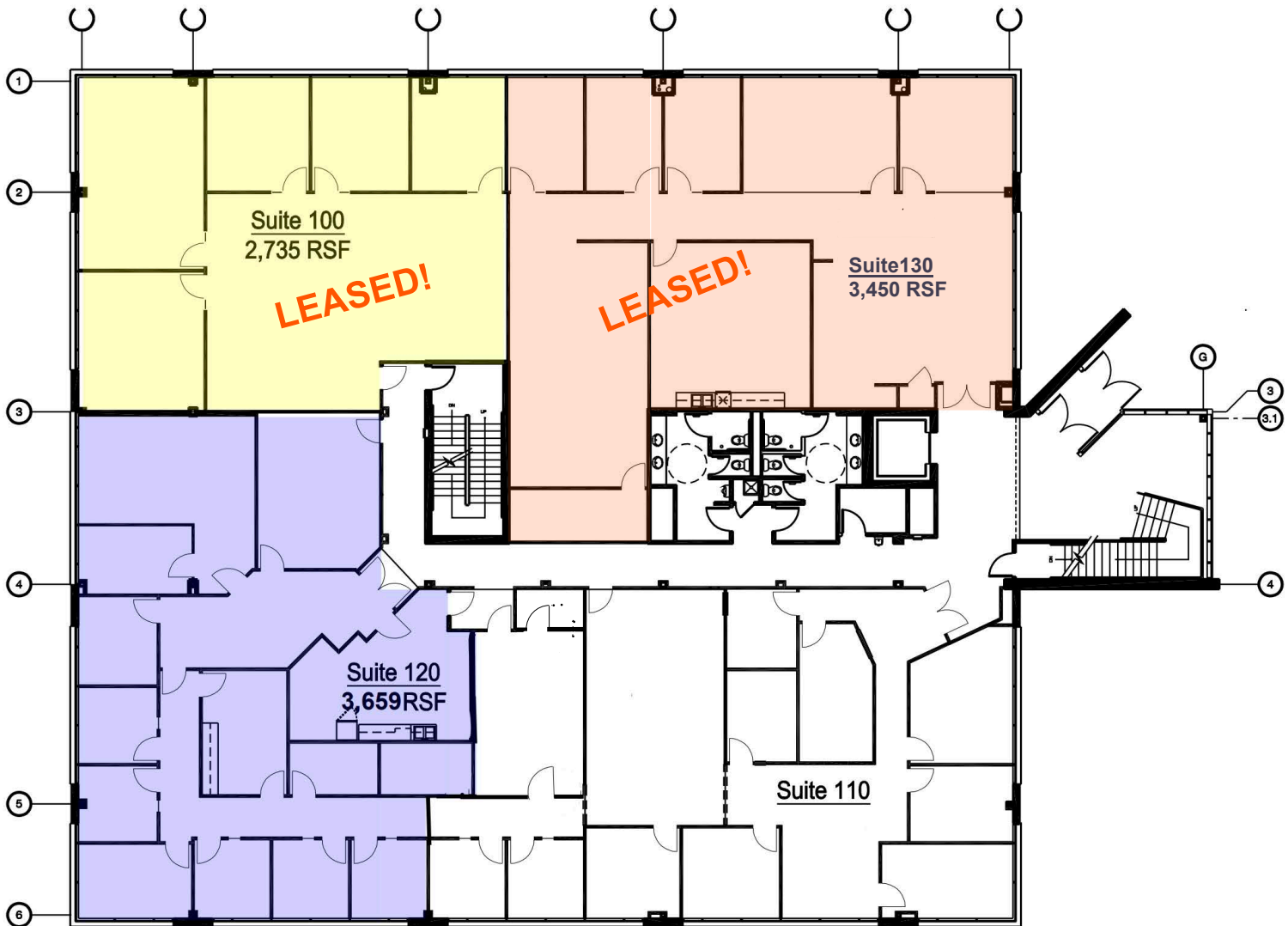
4B Inverness Court East Englewood, Colorado 80112

Suite 100- 2,735 SF

Suite 120- 3,659 SF

Suite 130- 3,450 SF

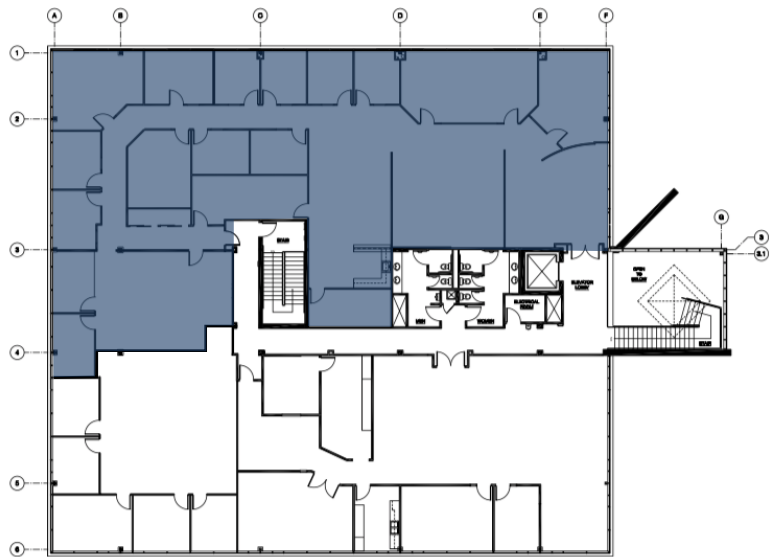
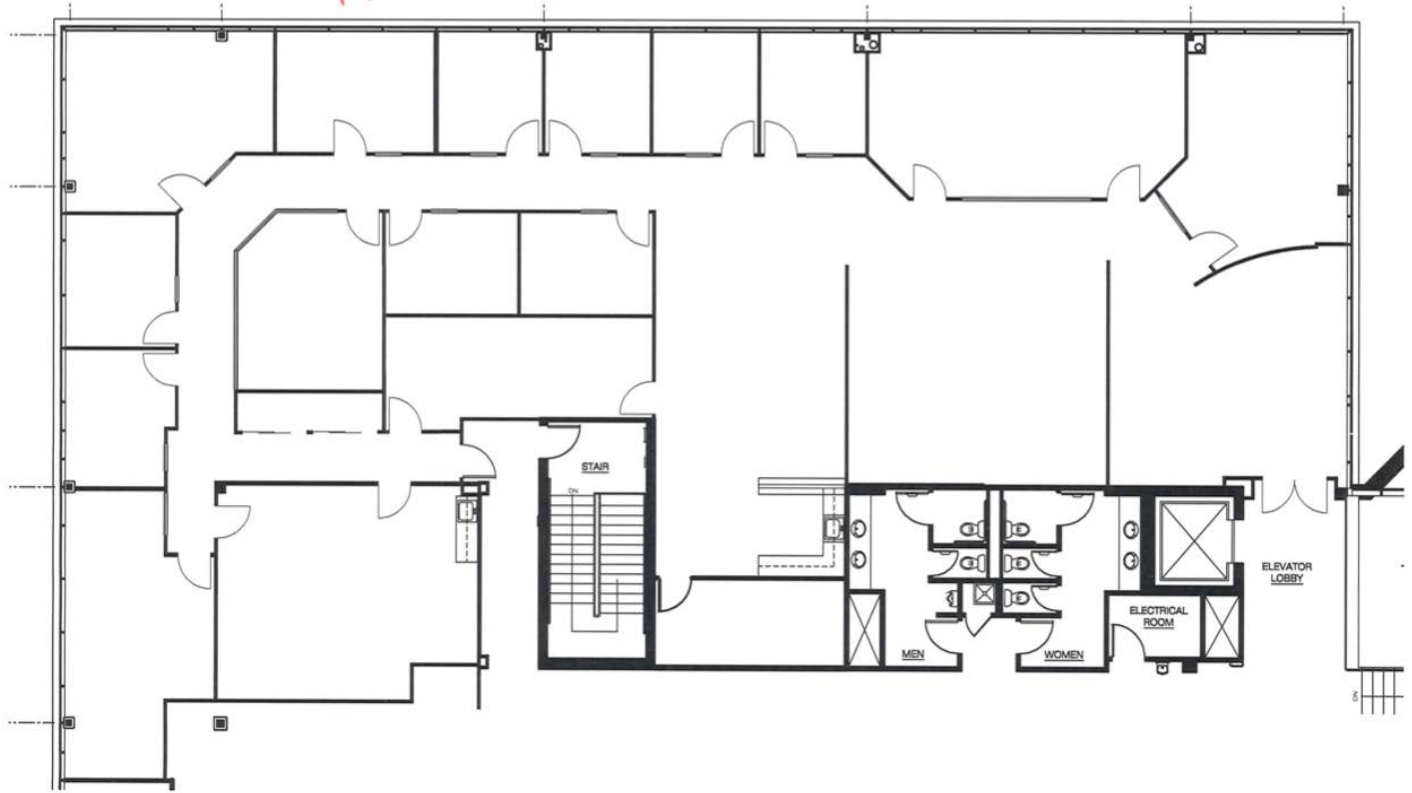
Potential Total- 9,844 RSF Contiguous (divisible to almost any size!)



BILL WOODWARD
bwoodward@risecps.com
720.274.8313

RANDY SWEARINGEN
rswearingen@risecps.com
303.521.7354

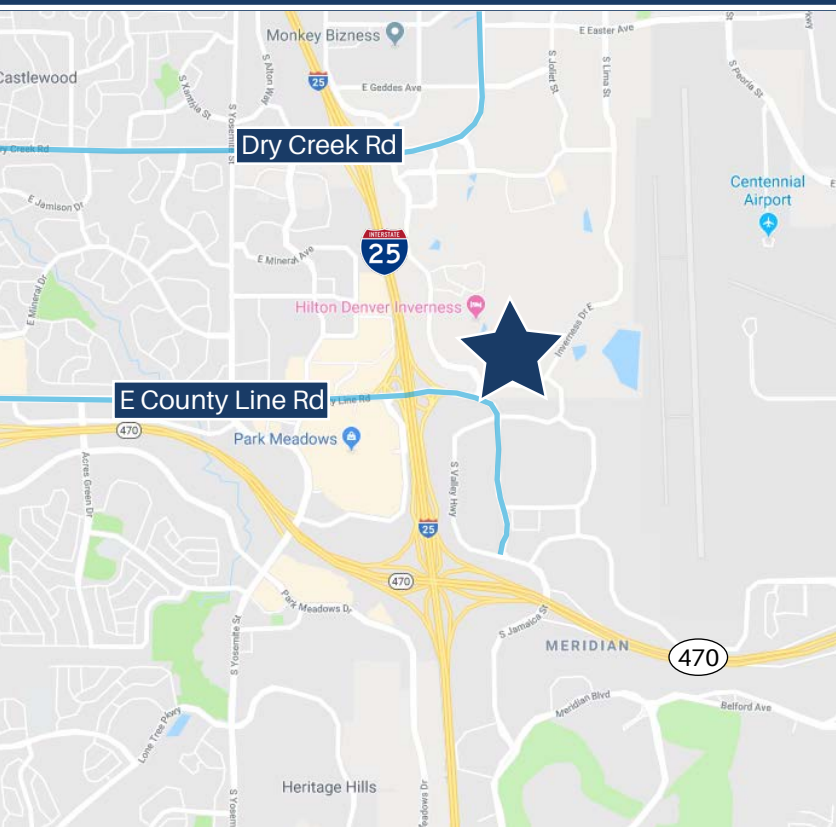
4B Inverness Court East
Englewood, Colorado 80112
Suite 280-7,620 SF



BILL WOODWARD
bwoodward@risecps.com
720.274.8313

RANDY SWEARINGEN
rswearingen@risecps.com
303.521.7354

4B Inverness Court East Englewood, Colorado 80112



RANDY SWEARINGEN
rswearingen@riseecps.com
303.521.7354