

6600

DUMBARTON CIRCLE

FREMONT, CALIFORNIA



FOR LEASE | ±1,665 SF – ±16,164 SF OFFICE SPACE

Google Maps

Steven Jenab | Associate | steven.jenab@cushwake.com | +1 650 320 0211 | LIC # 02085072

Kalil Jenab | Vice Chairman | kalil.jenab@cushwake.com | +1 408 200 8800 | LIC #00848988

525 University Ave, Suite 220 | Palo Alto, California 94301 | main +1 650 852 1200 | fax +1 650 856 1098 | cushmanwakefield.com

[View Site Specific COVID-19 Prevention Plan](#)



6600

DUMBARTON CIRCLE

FREMONT, CALIFORNIA

HIGHLIGHTS

- ±1,665 SF - ±16,164 SF Office Space
- Multiple layouts available
- Adult Educational Uses Approved
- Easy access to CA- 84 & HWY 880
- 8/1000 Parking Ratio
- Common Space Cafeteria
- Open Space Access
- High Security Environment
- TI's Available
- Available Immediately



Steven Jenab | Associate | steven.jenab@cushwake.com | +1 650 320 0211 | LIC # 02085072

Kalil Jenab | Vice Chairman | kalil.jenab@cushwake.com | +1 408 200 8800 | LIC #00848988

525 University Ave, Suite 220 | Palo Alto, California 94301 | main +1 650 852 1200 | fax +1 650 856 1098 | cushmanwakefield.com

©2020 Cushman & Wakefield. All rights reserved. The information contained in this communication is strictly confidential. This information has been obtained from sources believed to be reliable but has not been verified. No warranty or representation, express or implied, is made as to the condition of the property (or properties) referenced herein or as to the accuracy or completeness of the information contained herein, and same is submitted subject to errors, omissions, change of price, rental or other conditions, withdrawal without notice, and to any special listing conditions imposed by the property owner(s). Any projections, opinions or estimates are subject to uncertainty and do not signify current or future property performance.

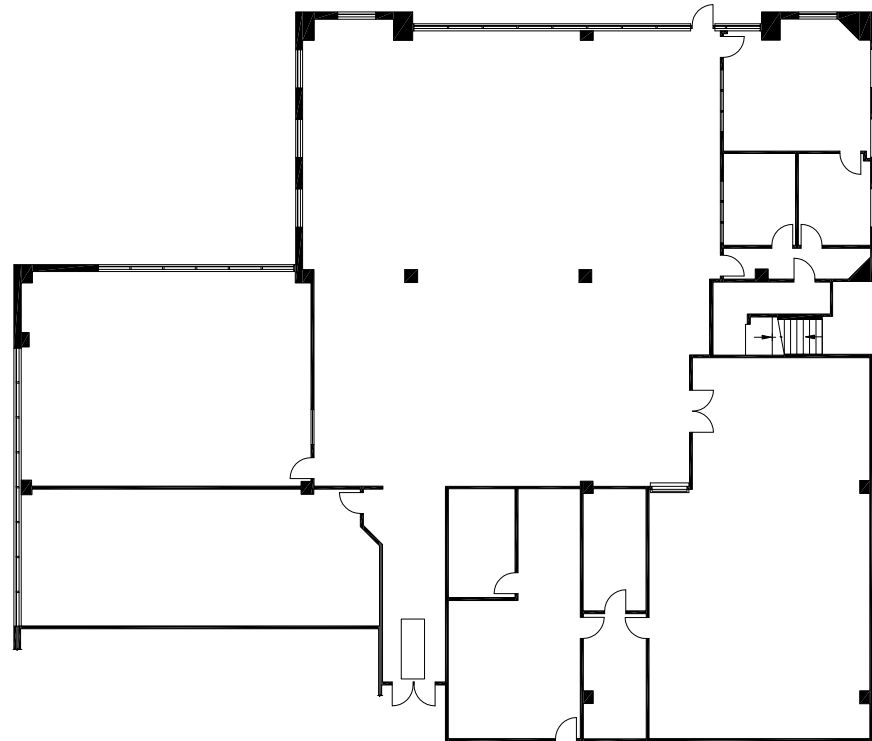


6600

DUMBARTON CIRCLE

FREMONT, CALIFORNIA

FLOOR PLAN



±10,351 SF

Floor plan not to scale

Steven Jenab | Associate | steven.jenab@cushwake.com | +1 650 320 0211 | LIC # 02085072

Kalil Jenab | Vice Chairman | kalil.jenab@cushwake.com | +1 408 200 8800 | LIC #00848988

525 University Ave, Suite 220 | Palo Alto, California 94301 | main +1 650 852 1200 | fax +1 650 856 1098 | cushmanwakefield.com

©2020 Cushman & Wakefield. All rights reserved. The information contained in this communication is strictly confidential. This information has been obtained from sources believed to be reliable but has not been verified. No warranty or representation, express or implied, is made as to the condition of the property (or properties) referenced herein or as to the accuracy or completeness of the information contained herein, and same is submitted subject to errors, omissions, change of price, rental or other conditions, withdrawal without notice, and to any special listing conditions imposed by the property owner(s). Any projections, opinions or estimates are subject to uncertainty and do not signify current or future property performance.

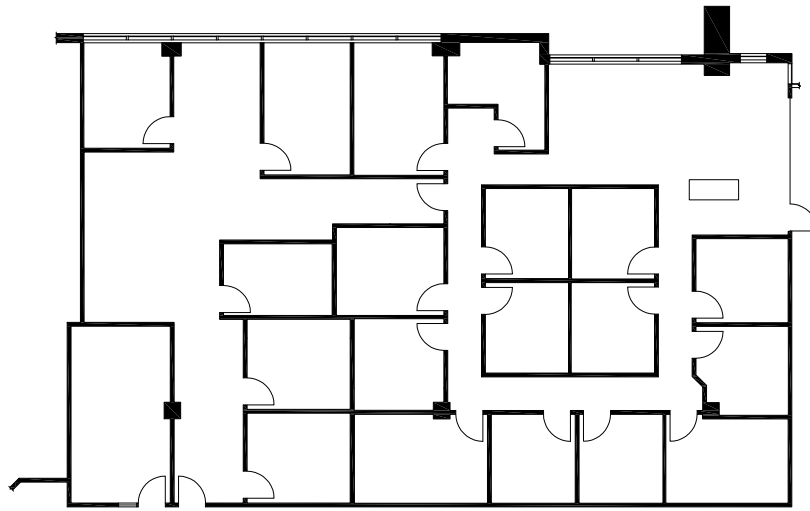


6600

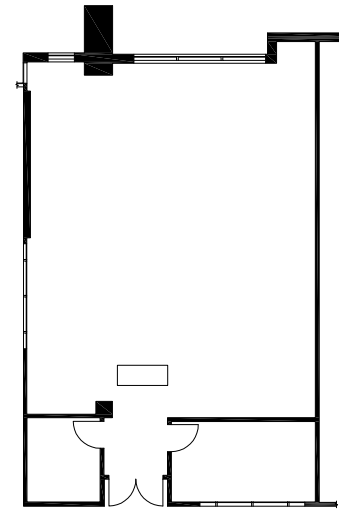
DUMBARTON CIRCLE

FREMONT, CALIFORNIA

FLOOR PLAN



±4,148 SF



±1,665 SF

Floor plan not to scale

Steven Jenab | Associate | steven.jenab@cushwake.com | +1 650 320 0211 | LIC # 02085072

Kalil Jenab | Vice Chairman | kalil.jenab@cushwake.com | +1 408 200 8800 | LIC #00848988

525 University Ave, Suite 220 | Palo Alto, California 94301 | main +1 650 852 1200 | fax +1 650 856 1098 | cushmanwakefield.com

©2020 Cushman & Wakefield. All rights reserved. The information contained in this communication is strictly confidential. This information has been obtained from sources believed to be reliable but has not been verified. No warranty or representation, express or implied, is made as to the condition of the property (or properties) referenced herein or as to the accuracy or completeness of the information contained herein, and same is submitted subject to errors, omissions, change of price, rental or other conditions, withdrawal without notice, and to any special listing conditions imposed by the property owner(s). Any projections, opinions or estimates are subject to uncertainty and do not signify current or future property performance.



6600

DUMBARTON CIRCLE

FREMONT, CALIFORNIA

AERIAL VIEW



Steven Jenab | Associate | steven.jenab@cushwake.com | +1 650 320 0211 | LIC # 02085072

Kalil Jenab | Vice Chairman | kalil.jenab@cushwake.com | +1 408 200 8800 | LIC #00848988

525 University Ave, Suite 220 | Palo Alto, California 94301 | main +1 650 852 1200 | fax +1 650 856 1098 | cushmanwakefield.com

©2020 Cushman & Wakefield. All rights reserved. The information contained in this communication is strictly confidential. This information has been obtained from sources believed to be reliable but has not been verified. No warranty or representation, express or implied, is made as to the condition of the property (or properties) referenced herein or as to the accuracy or completeness of the information contained herein, and same is submitted subject to errors, omissions, change of price, rental or other conditions, withdrawal without notice, and to any special listing conditions imposed by the property owner(s). Any projections, opinions or estimates are subject to uncertainty and do not signify current or future property performance.



6600 DUMBARTON CIRCLE FREMONT, CALIFORNIA

AMENITIES



Steven Jenab | Associate | steven.jenab@cushwake.com | +1 650 320 0211 | LIC # 02085072

Kalil Jenab | Vice Chairman | kalil.jenab@cushwake.com | +1 408 200 8800 | LIC #00848988

525 University Ave, Suite 220 | Palo Alto, California 94301 | main +1 650 852 1200 | fax +1 650 856 1098 | cushmanwakefield.com

©2020 Cushman & Wakefield. All rights reserved. The information contained in this communication is strictly confidential. This information has been obtained from sources believed to be reliable but has not been verified. No warranty or representation, express or implied, is made as to the condition of the property (or properties) referenced herein or as to the accuracy or completeness of the information contained herein, and same is submitted subject to errors, omissions, change of price, rental or other conditions, withdrawal without notice, and to any special listing conditions imposed by the property owner(s). Any projections, opinions or estimates are subject to uncertainty and do not signify current or future property performance.

