

11515 EL CAMINO REAL
SAN DIEGO, CA 92130



CBRE

CLASS A MEDICAL OFFICE SPACE

AMERICAN
ASSETS
TRUST 

11515 EL CAMINO REAL

SAN DIEGO, CA 92130



Pacific Ocean

Torrey Reserve

11515

TORREY RESERVE is located in the Del Mar Heights/Carmel Valley office submarket in Central San Diego County. This Class “A” coastal office project boasts numerous amenities, easy ingress and egress, and strong, responsive ownership.

As a Class “A” office project, TORREY RESERVE offers:

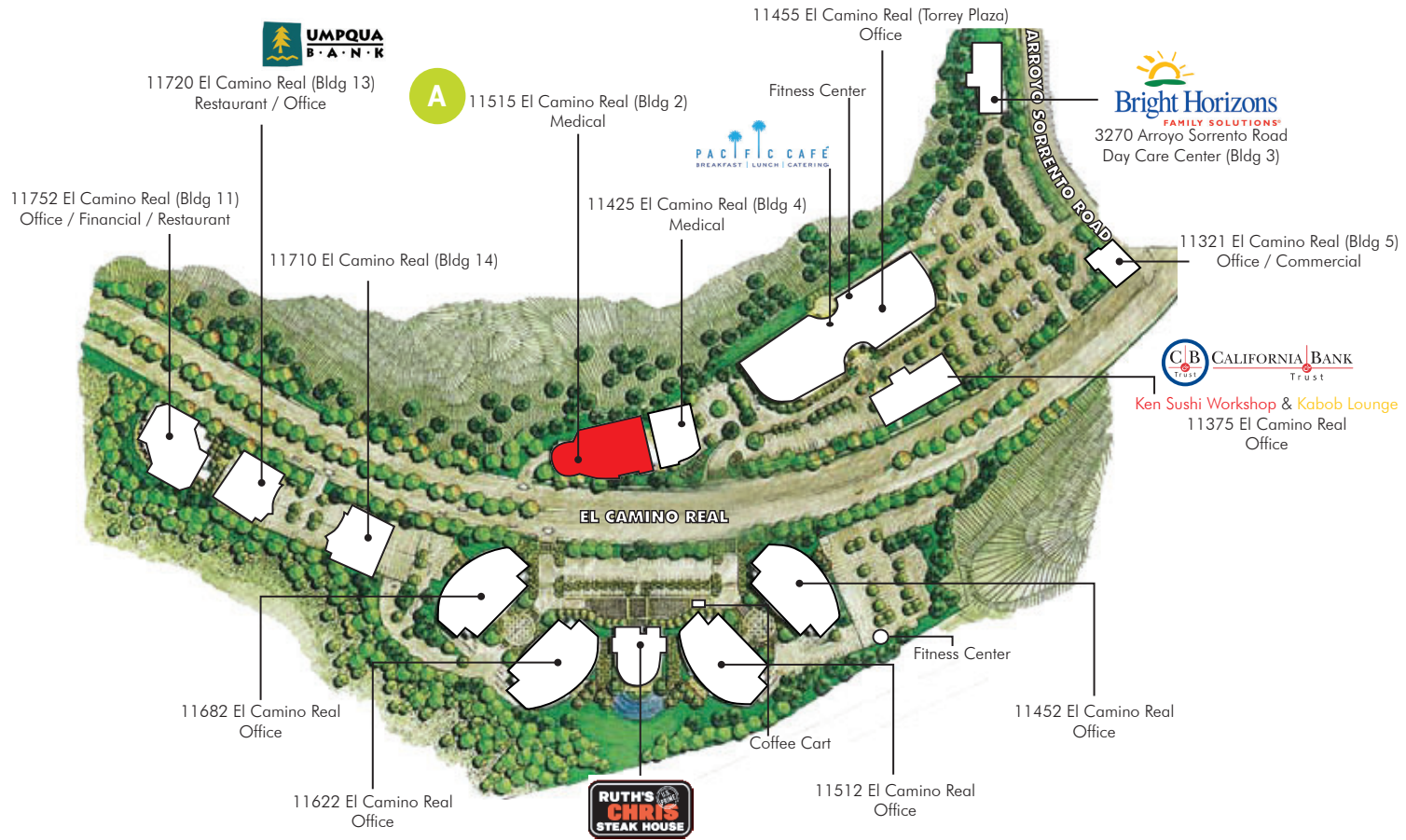
- A premier Del Mar Heights / Carmel Valley location
- Convenient access to I-5, I-805 and Highway 56
- On-site coffee cart
- On-site restaurants include Ruth’s Chris Steakhouse, Pacific Cafe, Ken Sushi, and Kabob Lounge
- Branch banking at California Bank & Trust and Umpqua Bank
- 4/1,000 USF parking ratio (surface and covered parking available)
- AT&T, Cox, and Time Warner cable and fiber available in the building
- On-site Bright Horizons day care center

When you consider the many fine features combined with the project’s location, amenities, access and office availability, we think you will agree that TORREY RESERVE represents the area’s premier medical campus.



11515 EL CAMINO REAL

SAN DIEGO, CA 92130



AVAILABLE

SUITE	SIZE	AVAILABILITY	LEASE RATE	DESCRIPTION
A 11515 EL CAMINO REAL				
100	3,232 RSF	60 Days Notice	Negotiable	Highly Improved, AAAHC Accredited Surgery Center with two operating rooms and large post-op recovery with three bays. Accompanying medical office space with nurse stations and state of the art exam rooms. Includes a lab draw station, two reception areas to service both the surgery center and medical office space, and a conference room. "Turn-key" condition ready for immediate occupancy. Situated in the most sought after locale in San Diego County. Call Brokers for more information or to schedule a tour.

11515 EL CAMINO REAL

SAN DIEGO, CA 92130

Suite 100: 3,232 RSF
 Lease Rate: Negotiable
 Available: 60 Days Notice



11515 EL CAMINO REAL

SAN DIEGO, CA 92130

Suite 100: 3,232 RSF



11515 EL CAMINO REAL
SAN DIEGO, CA 92130

FOR MORE INFORMATION CONTACT

Lars Eisenhauer

Lic. 01372911
+1 760 438 8534
lars.eisenhauer@cbre.com

Dan Henry

Lic. 02035998
+1 760 438 8569
dan.henry@cbre.com

Dick Balestri

Lic. 00452884
+1 858 546 4612
dick.balestri@cbre.com

Ryan Egli

Lic. 01445615
+1 858 546 4648
ryan.egli@cbre.com

CBRE Inc | 4301 La Jolla Village Drive, Suite 3000 | San Diego, CA 92122

© 2020 CBRE, Inc. All rights reserved. This information has been obtained from sources believed reliable, but has not been verified for accuracy or completeness. You should conduct a careful, independent investigation of the property and verify all information. Any reliance on this information is solely at your own risk. CBRE and the CBRE logo are service marks of CBRE, Inc. All other marks displayed on this document are the property of their respective owners, and the use of such logos does not imply any affiliation with or endorsement of CBRE. Photos herein are the property of their respective owners. Use of these images without the express written consent of the owner is prohibited.

CBRE