

# LEASING OPPORTUNITY ON 16TH STREET

4531 North 16th Street  
Phoenix, Arizona  
(16th Street & Highland)



- Full Service Lease
- 16th Street & Highland Location (Close to Camelback Corridor)
- Available Suites:

## 4531 Building

Suite 126 ± 2,000 RSF

- Parking Ratio ±1:250
- Covered Parking Available
- Close to State Route 51, Loop 202 & I-10 Freeways
- Strong Long-Term Local Ownership!

For More Information, Please Contact:

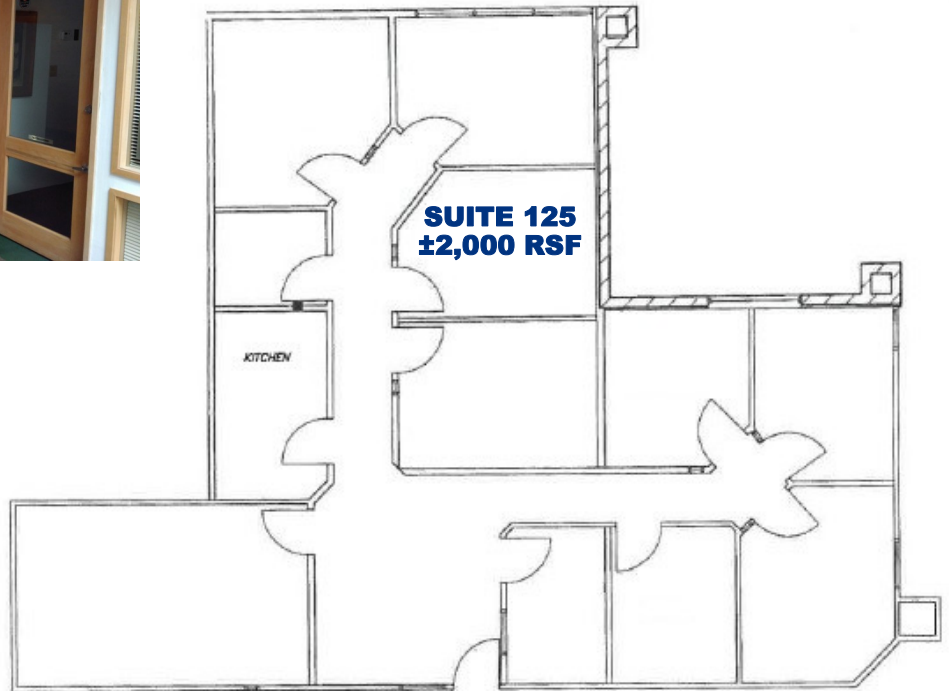
**TYLER LUPTON**  
**(602) 386-3009**  
tlupton@cutlercommercial.com



**CUTLER COMMERCIAL**  
2150 E. Highland Suite 207  
Phoenix, Arizona 85016  
(602) 955-3500  
(602) 955-2828 Fax  
www.cutlercommercial.com

# 4531 North 16th Street | Phoenix, Arizona (16th Street & Highland)

## FLOOR PLAN & PHOTOGRAPHS



**For More Information, Please Contact:**

**TYLER LUPTON**  
**(602) 386-3009**  
tlupton@cutlercommercial.com

**NOTE: ALL DIMENSIONS ARE APPROXIMATE AND SITE PLANS ARE NOT TO SCALE**

All information furnished is from sources deemed reliable. No representation is made as to the accuracy thereof and it is submitted subject to errors, omissions, changes, or withdrawal without notice and to any special listings conditions, including the rate and manner of payment of commissions for particular offerings imposed by principals or agreed to by the company, the terms of which are available to interested principles or brokers.