



442 Percival Road

Columbia, South Carolina

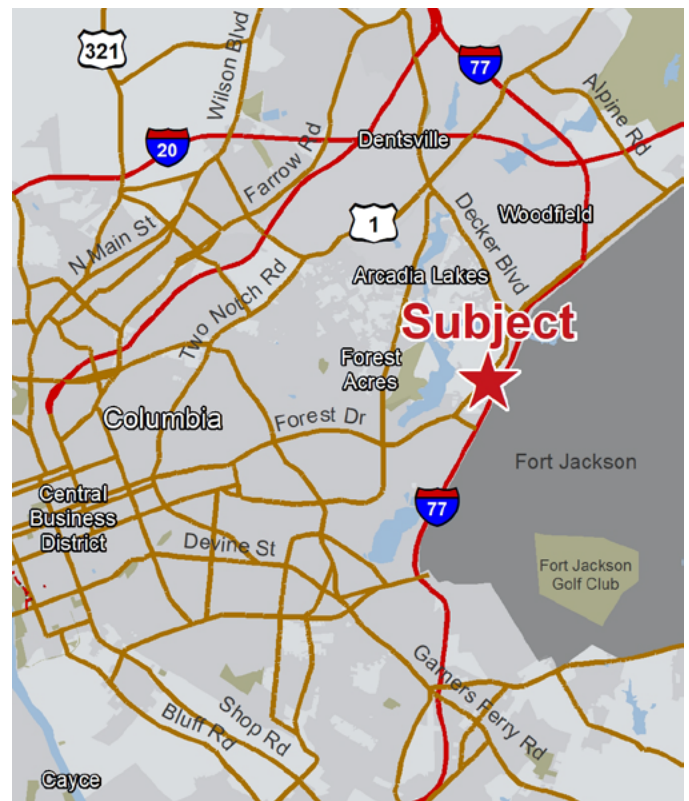
Property Features

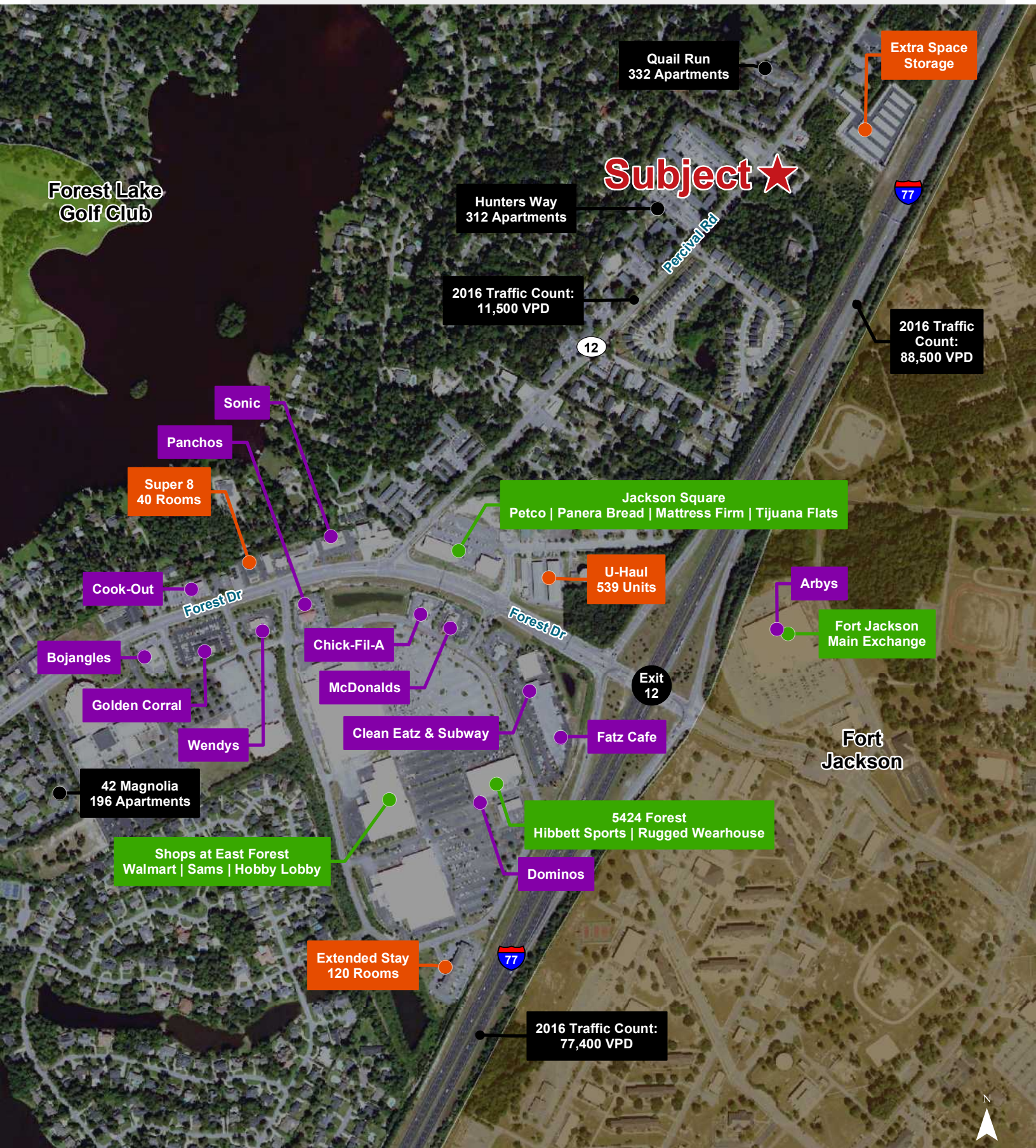
- ±1,500 SF available in ±6,000 SF neighborhood retail center
- Suitable uses include salon, laundromat, cell phone store, deli, cafe, appliance store
- Water and sewer available
- Traffic County: 11,000 VOD
- Zoning: GC, Richland County
- Lease Rate: \$1,200/month + utilities

For more information:

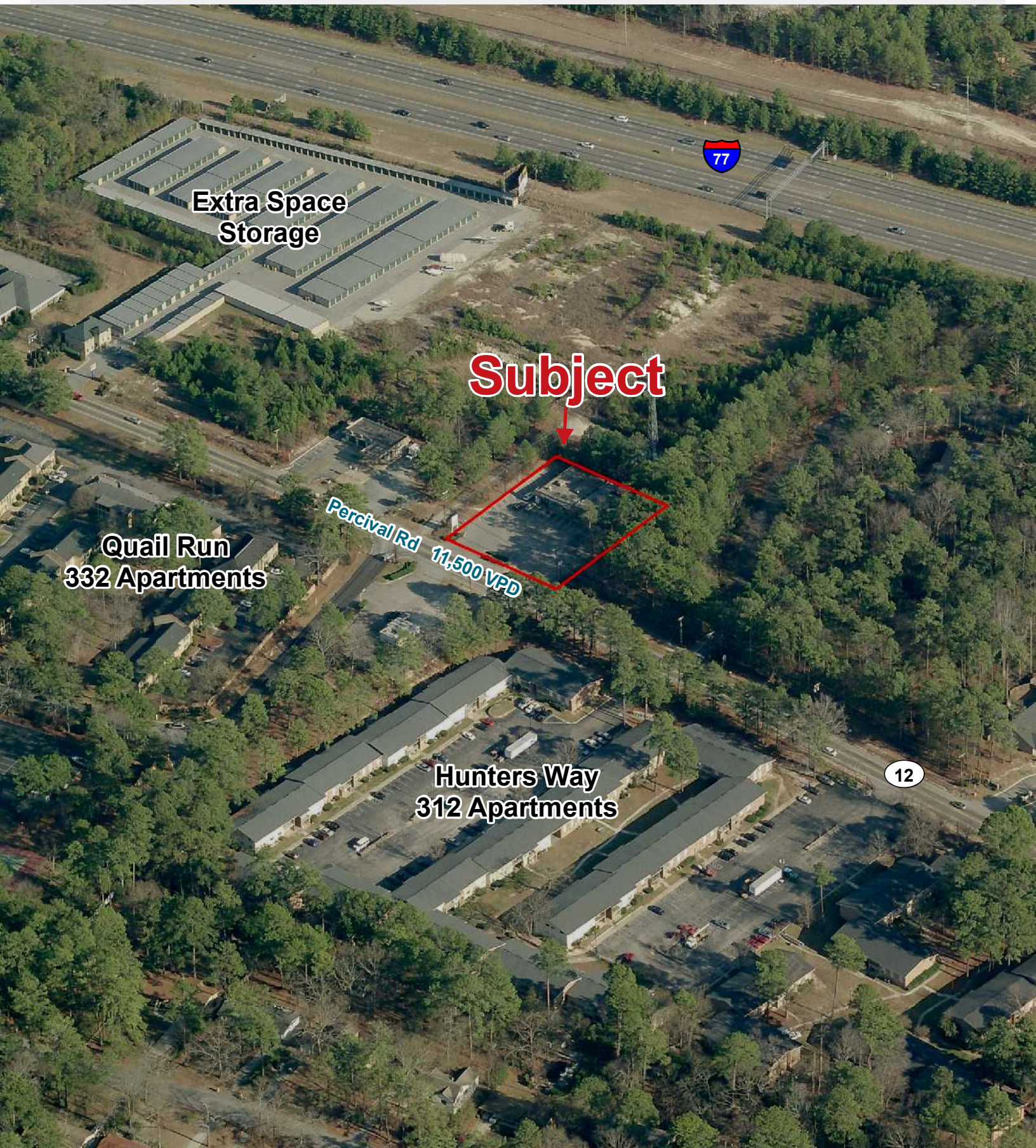
John Gregory, PE

+1 803 744 9896 • jegregory@naiavant.com





Map Updated: Wednesday, April 11, 2018. This information submitted is not guaranteed. Although obtained from reliable sources, all information should be confirmed prior to use or reliance upon the information. This document may not be reproduced in whole or in part without the express written consent of NAI Avant.



Map Updated: Wednesday, April 11, 2018. This information submitted is not guaranteed. Although obtained from reliable sources, all information should be confirmed prior to use or reliance upon the information. This document may not be reproduced in whole or in part without the express written consent of NAI Avant.

Demographic Profile

Forest Drive and I-77

	1 Mile	3 Miles	5 Miles		1 Mile	3 Miles	5 Miles
Population				Median Household Income			
2010 Census	6,554	45,104	121,237	2017 Estimate	\$39,056	\$38,503	\$37,979
2017 Estimate	6,957	48,993	128,566	2022 Projection	\$40,487	\$40,636	\$40,256
2022 Projection	7,356	52,286	135,737	Average Household Income			
% Chg. 2017-2022	5.7%	6.7%	5.6%	2017 Estimate	\$48,859	\$51,773	\$54,401
Households				2022 Projection	\$52,062	\$55,779	\$58,830
2010 Census	2,983	19,629	51,412	Per Capita Household Income			
2017 Estimate	3,131	21,186	54,465	2017 Estimate	\$22,206	\$23,125	\$24,096
2022 Projection	3,293	22,547	57,415	2022 Projection	\$23,490	\$24,737	\$25,875
Families				2017 Household Income Dist.			
2010 Census	1,551	9,378	23,845	Less than \$15,000	15.5%	17.4%	19.1%
2017 Estimate	1,602	9,847	24,671	\$15,000 - \$24,999	18.2%	14.9%	14.0%
2022 Projection	1,671	10,335	25,708	\$25,000 - \$34,999	10.1%	12.9%	13.0%
2017 Age Distribution				\$35,000 - \$49,999	17.7%	16.0%	15.1%
0 - 4	6.7%	5.7%	5.5%	\$50,000 - \$74,999	20.5%	17.7%	16.6%
5 - 9	5.2%	4.3%	4.3%	\$75,000 - \$99,999	8.2%	10.0%	9.6%
10 - 14	4.2%	3.8%	3.9%	\$100,000 - \$149,999	7.8%	7.9%	8.1%
15 - 19	5.5%	7.7%	9.7%	\$150,000 - \$199,999	1.5%	2.0%	2.5%
20 - 24	9.0%	16.2%	17.0%	\$200,000 and Up	0.4%	1.2%	2.0%
25 - 34	16.5%	16.5%	15.9%	2017 Dist. by Race & Ethnicity			
35 - 44	12.1%	10.7%	10.3%	White Alone	64.5%	66.5%	59.0%
45 - 54	13.7%	11.9%	11.6%	Black Alone	23.4%	21.5%	32.8%
55 - 64	10.7%	10.0%	10.1%	American Indian Alone	0.8%	0.5%	0.3%
65 - 74	6.6%	6.1%	5.8%	Asian Alone	1.5%	2.4%	2.4%
75 - 84	5.8%	4.7%	3.9%	Pacific Islander Alone	0.0%	0.1%	0.1%
85+	4.1%	2.5%	2.0%	Some Other Race Alone	7.3%	6.4%	3.3%
Median Age				Two or More Races	2.6%	2.5%	2.1%
2010 Census	37.5	31.9	30.1	Hispanic Origin (Any Race)	11.4%	10.8%	6.4%
2017 Estimate	38.4	32.8	31.6	2017 Housing Data			
2022 Projection	39.2	33.6	32.5	Owner Occ. Housing Units	1,455	9,594	24,321
Average Household Size				Renter Occ. Housing Units	1,676	11,592	30,144
2010 Census	2.17	2.17	2.15	2017 Business Data			
2017 Estimate	2.20	2.20	2.17	Total Businesses:	711	4,161	9,847
2022 Projection	2.21	2.21	2.18	Total Employees:	6,195	59,620	142,666