

CREEKSIDE OAKS BROKER PROMOTION

# 3 DAYS in *Hawaii*

ROUNDTrip AIRFARE & ACCOMMODATIONS FOR TWO PEOPLE\*

\*ANY NEW LEASE AT 1740, 1750 or 1760 CREEKSIDE OAKS DRIVE  
SIGNED BEFORE AUGUST 31, 2019 • MINIMUM THREE YEAR LEASE TERM • SUBJECT TO LANDLORD APPROVAL.



CLASS A OFFICE SUITES FOR LEASE

## Overview

- Approximately ±1,561-±6,641 RSF available
- On-site cafe
- On-site property management office
- On-site Common Area Conference Facility
- On-site shower facilities
- On-site bike lockers
- Outdoor seating area with water feature
- Close to many retail and service locations
- Outstanding freeway access & close proximity to Downtown Sacramento and airport
- Parking 4/1,000 SF
- Electrical vehicle charging stations available



## CONTACT

Sean Mullen  
sean.mullen@cushwake.com  
(916) 288.4811  
CA License# 01845406

Kevin Partington  
kevin.partington@cushwake.com  
(916) 288.4807  
CA License# 01199010

Kris Kalmbach  
kris.kalmbach@cushwake.com  
(916) 288.4421  
CA License# 01436668

A Project By **SEAGATE**  
PROPERTIES, INC.

**CUSHMAN & WAKEFIELD**



# AVAILABILITIES

ADDRESS	SUITE	RSF
<b>1740</b> Creekside Oaks	130	4,430 RSF
<b>1750</b> Creekside Oaks	215	1,561 RSF - Avail. Q3-19
<b>1760</b> Creekside Oaks	175**	4,656 RSF - Avail. Q3-19
<b>1760</b> Creekside Oaks	180**	1,985 RSF
<b>1760</b> Creekside Oaks	175/180	6,641 RSF - Avail. Q3-19

**\*\* Suites 175 & 180 can be combined for a total of ±6,641 RSF**

## CONTACT

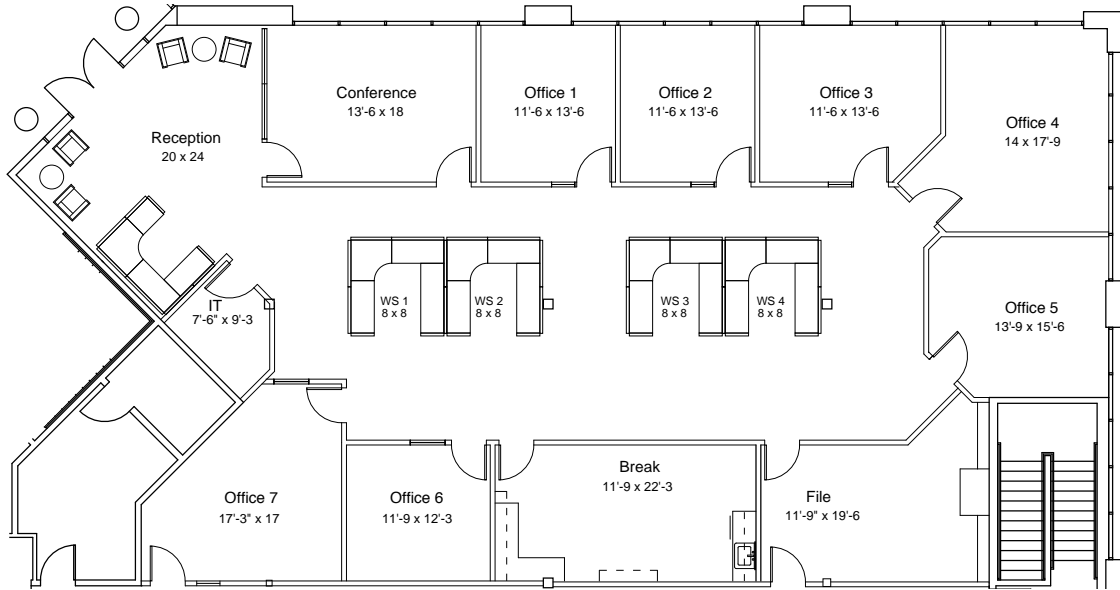
Sean Mullen  
 sean.mullen@cushwake.com  
 (916) 288.4811  
 CA License# 01845406

Kevin Partington  
 kevin.partington@cushwake.com  
 (916) 288.4807  
 CA License# 01199010

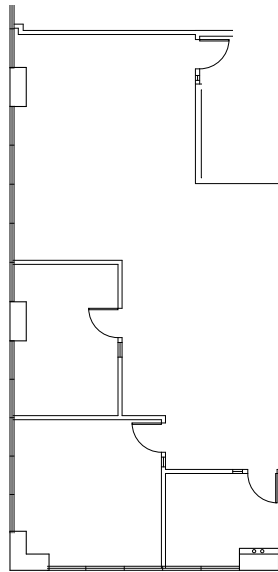
Kris Kalmbach  
 kris.kalmbach@cushwake.com  
 (916) 288.4421  
 CA License# 01436668



## 1740 CREEKSIDE | SUITE 130 | ±4,430 RSF



## 1750 CREEKSIDE | SUITE 215 | ±1,561 RSF



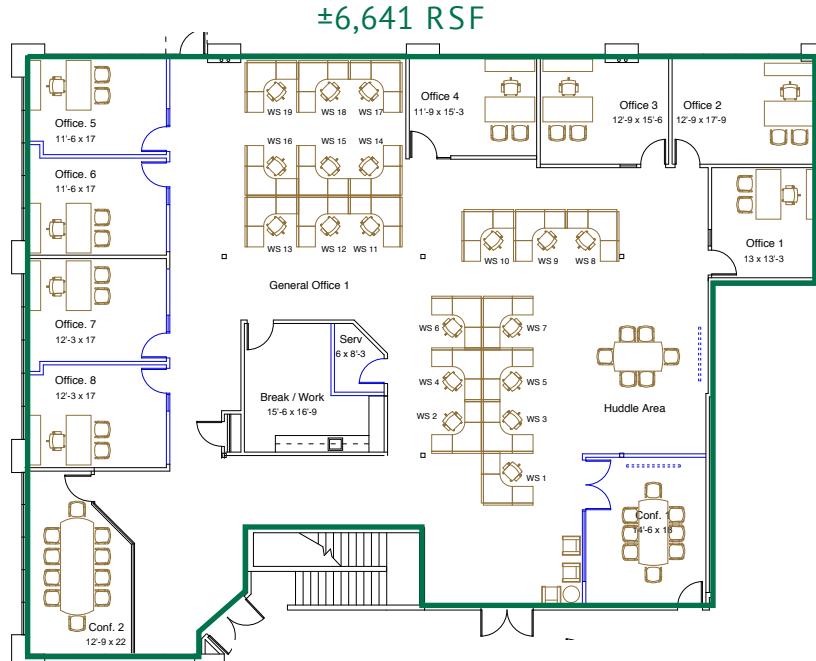
### CONTACT

Sean Mullen  
sean.mullen@cushwake.com  
(916) 288.4811  
CA License# 01845406

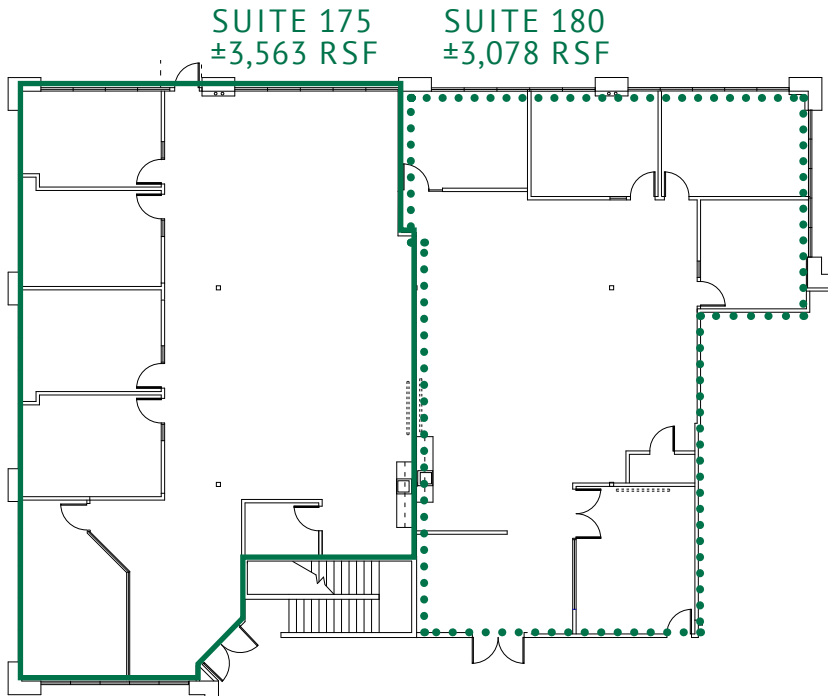
Kevin Partington  
kevin.partington@cushwake.com  
(916) 288.4807  
CA License# 01199010

Kris Kalmbach  
kris.kalmbach@cushwake.com  
(916) 288.4421  
CA License# 01436668

# 1760 CREEKSIDE | SUITE 175 & 180 | OPTION 1 ONE TENANT SCENARIO



# 1760 CREEKSIDE | SUITE 175 & 180 | OPTION 2 TWO TENANT SCENARIO



## CONTACT

Sean Mullen  
sean.mullen@cushwake.com  
(916) 288.4811  
CA License# 01845406

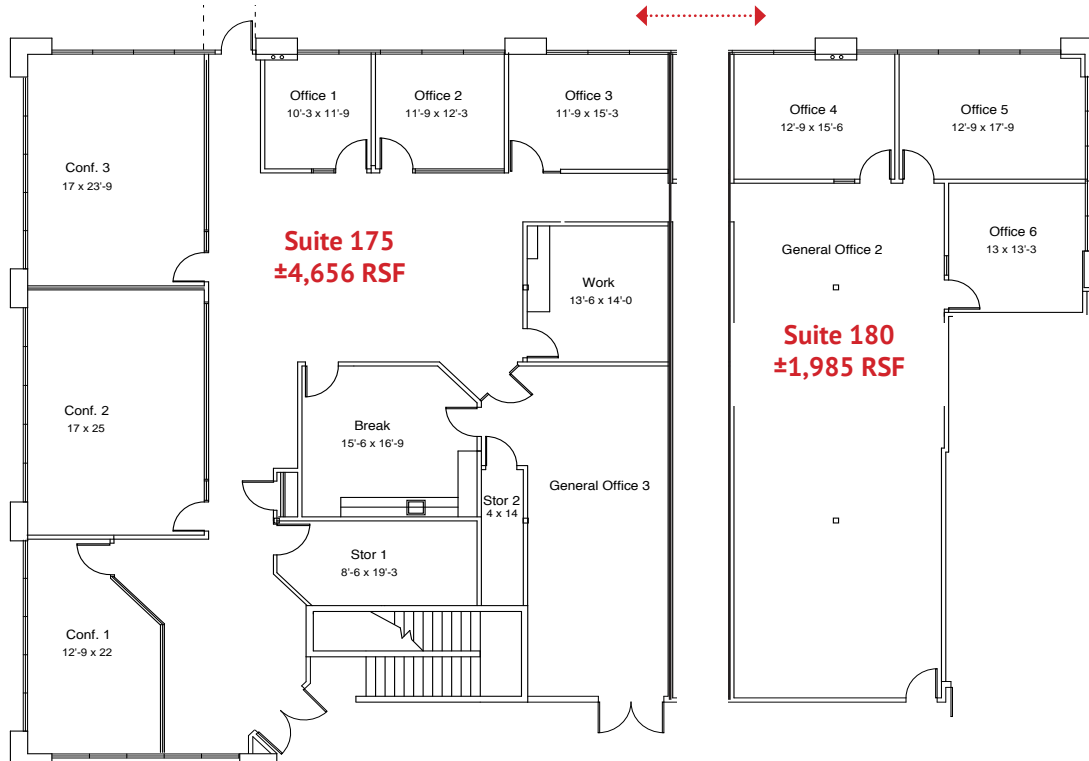
Kevin Partington  
kevin.partington@cushwake.com  
(916) 288.4807  
CA License# 01199010

Kris Kalmbach  
kris.kalmbach@cushwake.com  
(916) 288.4421  
CA License# 01436668

A Project By  
**SEAGATE**  
PROPERTIES, INC.



# 1760 CREEKSIDE | SUITE 175 & 180 | ±6,641 RSF



## CONTACT

Sean Mullen  
sean.mullen@cushwake.com  
(916) 288.4811  
CA License# 01845406

Kevin Partington  
kevin.partington@cushwake.com  
(916) 288.4807  
CA License# 01199010

Kris Kalmbach  
kris.kalmbach@cushwake.com  
(916) 288.4421  
CA License# 01436668



**CONTACT**

Sean Mullen  
sean.mullen@cushwake.com  
(916) 288.4811  
CA License# 01845406

Kevin Partington  
kevin.partington@cushwake.com  
(916) 288.4807  
CA License# 01199010

Kris Kalmbach  
kris.kalmbach@cushwake.com  
(916) 288.4421  
CA License# 01436668

A Project By  
**SEAGATE**  
PROPERTIES, INC.

**CUSHMAN & WAKEFIELD**