

Available Medical Office Space for Lease

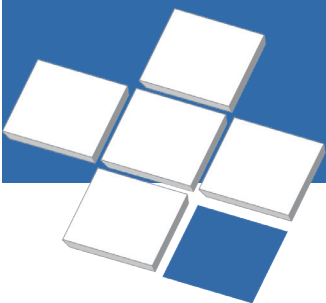
# Columbia Medical Plaza

8614 East Mill Plain Blvd., Vancouver, WA 98664



For Leasing Information:  
Lael Crompton  
Director, Leasing  
Phone: 858-794-1900  
lcrompton@pmbres.com  
www.pmbres.com  
CA Lic. 01871298

- Four-Story 23,000 Square Foot Medical Office Building
- Within walking distance to PeaceHealth Southwest Medical Center
- Excellent visibility from East Mill Plain Blvd., a major thoroughfare
- Dedicated property management and maintenance staff
- Easy access to major freeways and public transportation

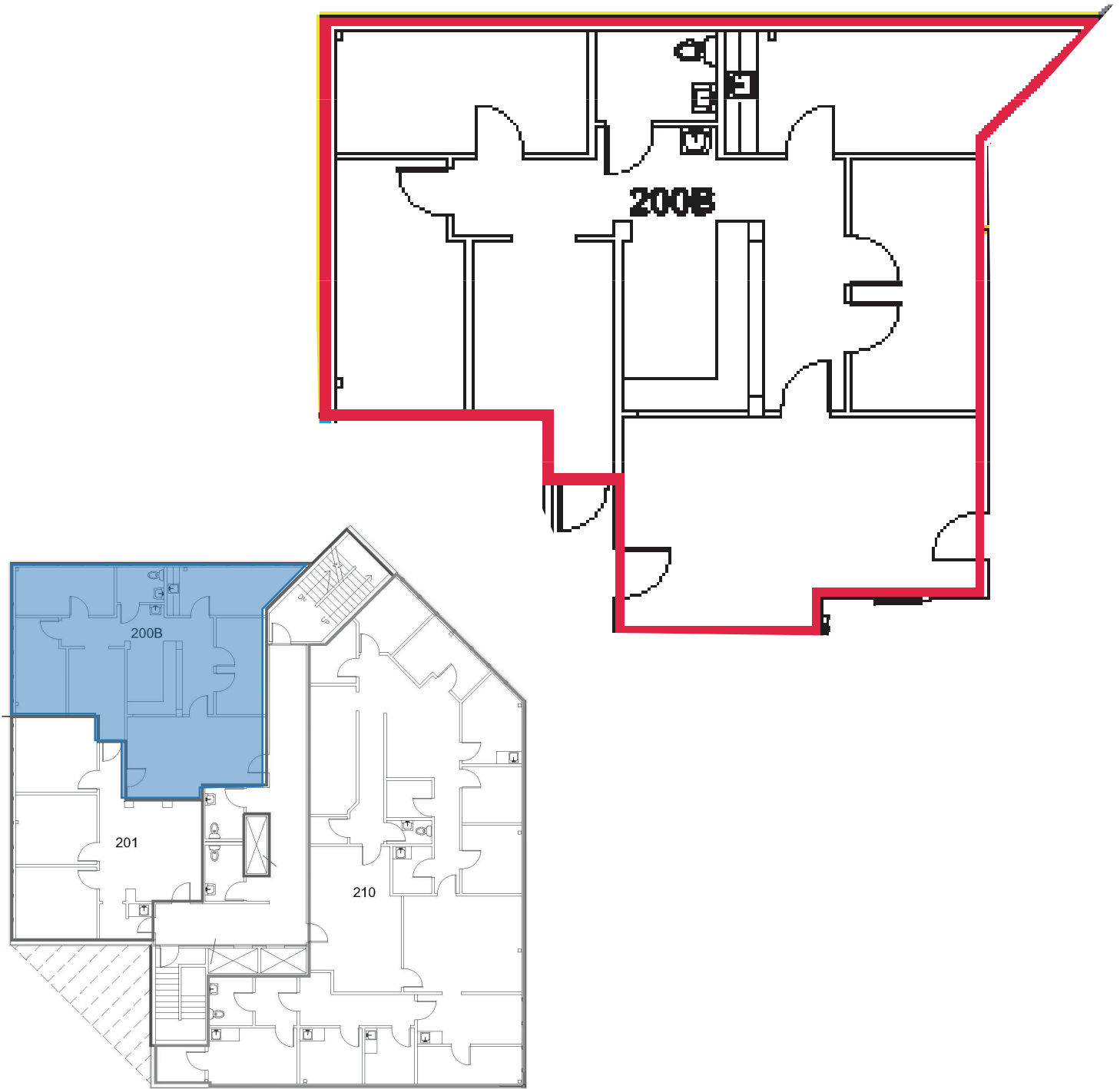


**PMB**  
Real Estate Services  
*Real Estate Management Solutions for Healthcare*



# Second Floor Availability

Suite 200B: 1,517 RSF

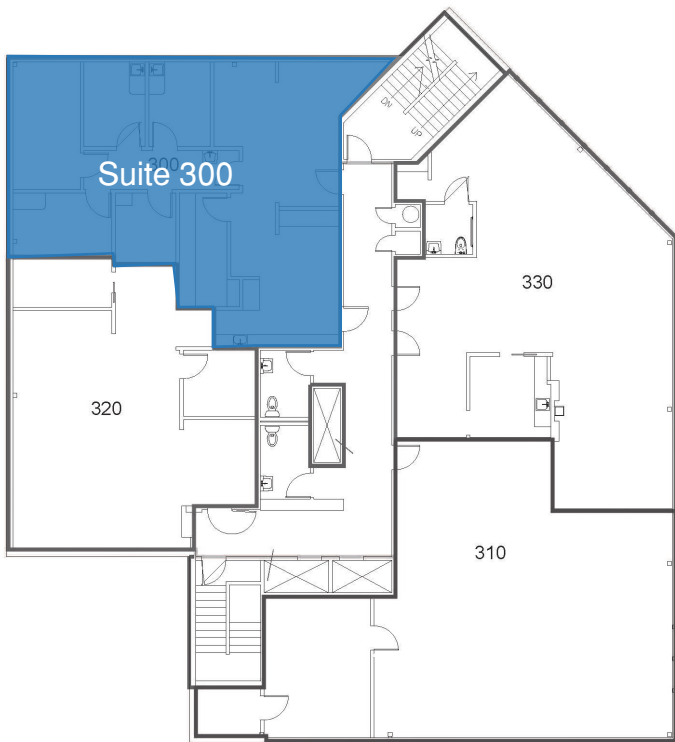
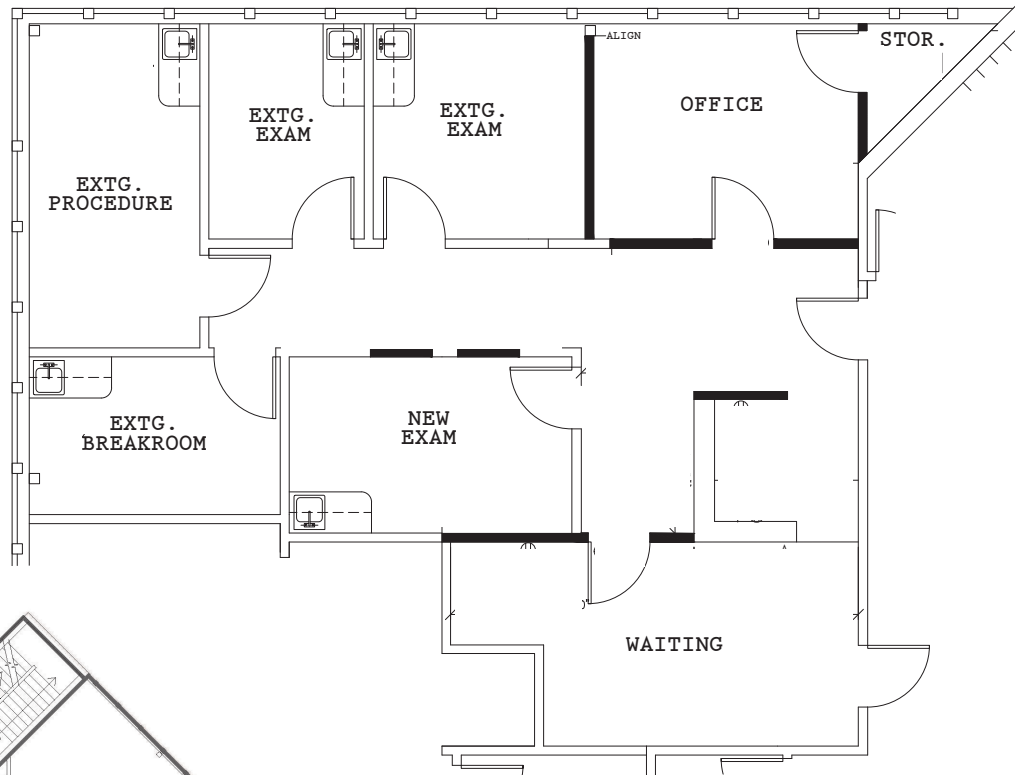


For Leasing Information:  
Lael Crompton | Director, Leasing  
Phone: 858-794-1900 | [lcrompton@pmbres.com](mailto:lcrompton@pmbres.com)  
[www.pmbres.com](http://www.pmbres.com) | CA Lic. 01871298

# Third Floor Availability

Suite 300: 1,568 RSF

\*Spec Suite Available 4Q-2023



*For Leasing Information:*

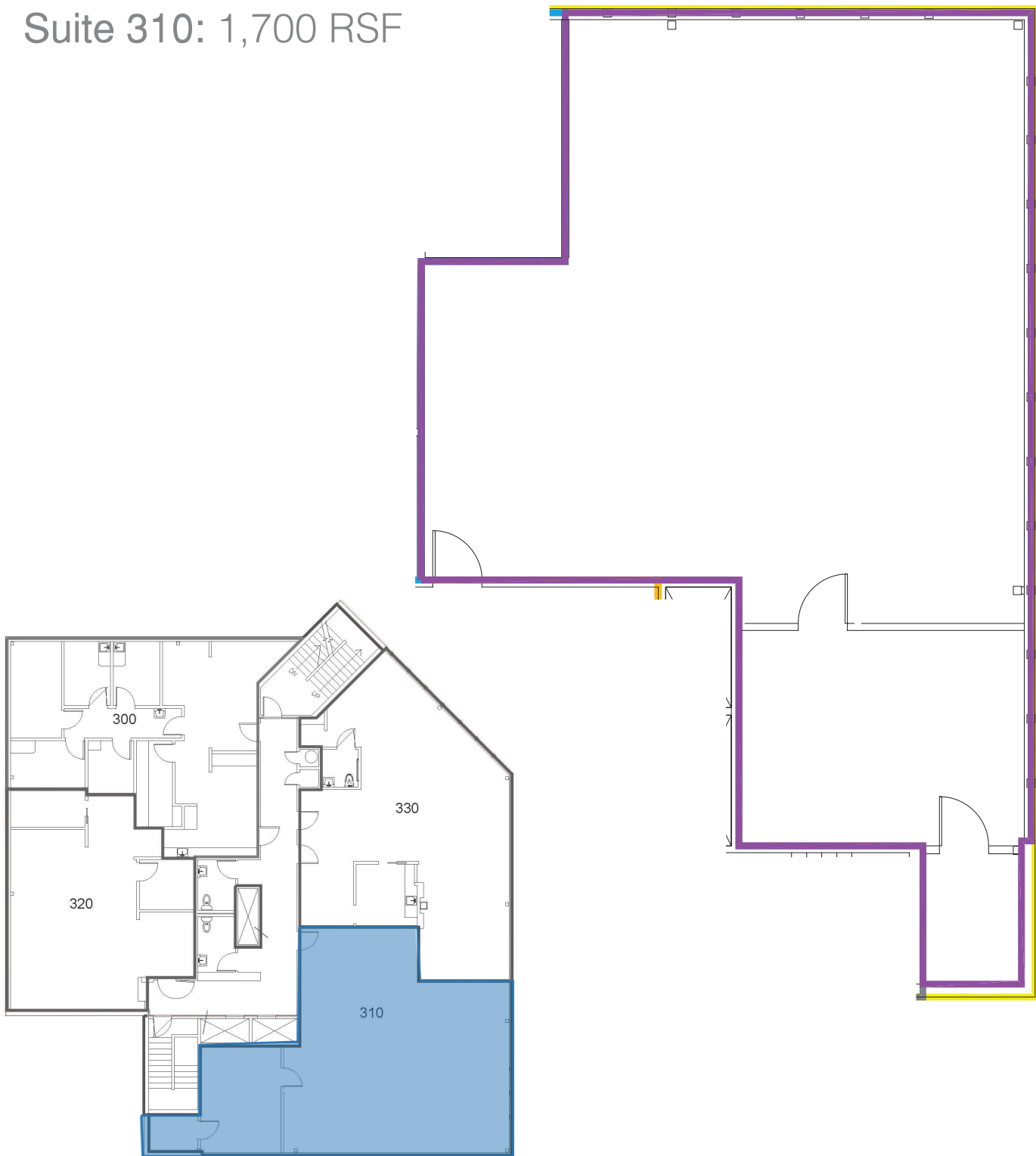
Lael Crompton | Director, Leasing  
Phone: 858-794-1900 | [lcrompton@pmbres.com](mailto:lcrompton@pmbres.com)  
[www.pmbres.com](http://www.pmbres.com) | CA Lic. 01871298



PMB Real Estate Services

# Third Floor Availability

Suite 310: 1,700 RSF



For Leasing Information:  
Lael Crompton | Director, Leasing  
Phone: 858-794-1900 | [lcrompton@pmbres.com](mailto:lcrompton@pmbres.com)  
[www.pmbres.com](http://www.pmbres.com) | CA Lic. 01871298