

Space A  
2,697 RSF

Space B  
2,359 RSF

**TOTAL VACANT: 5,056 RSF**

1st Floor Plan

SCALE: 1" = 20'-0"

# Academy Corporate Center

5225 North Academy Blvd.

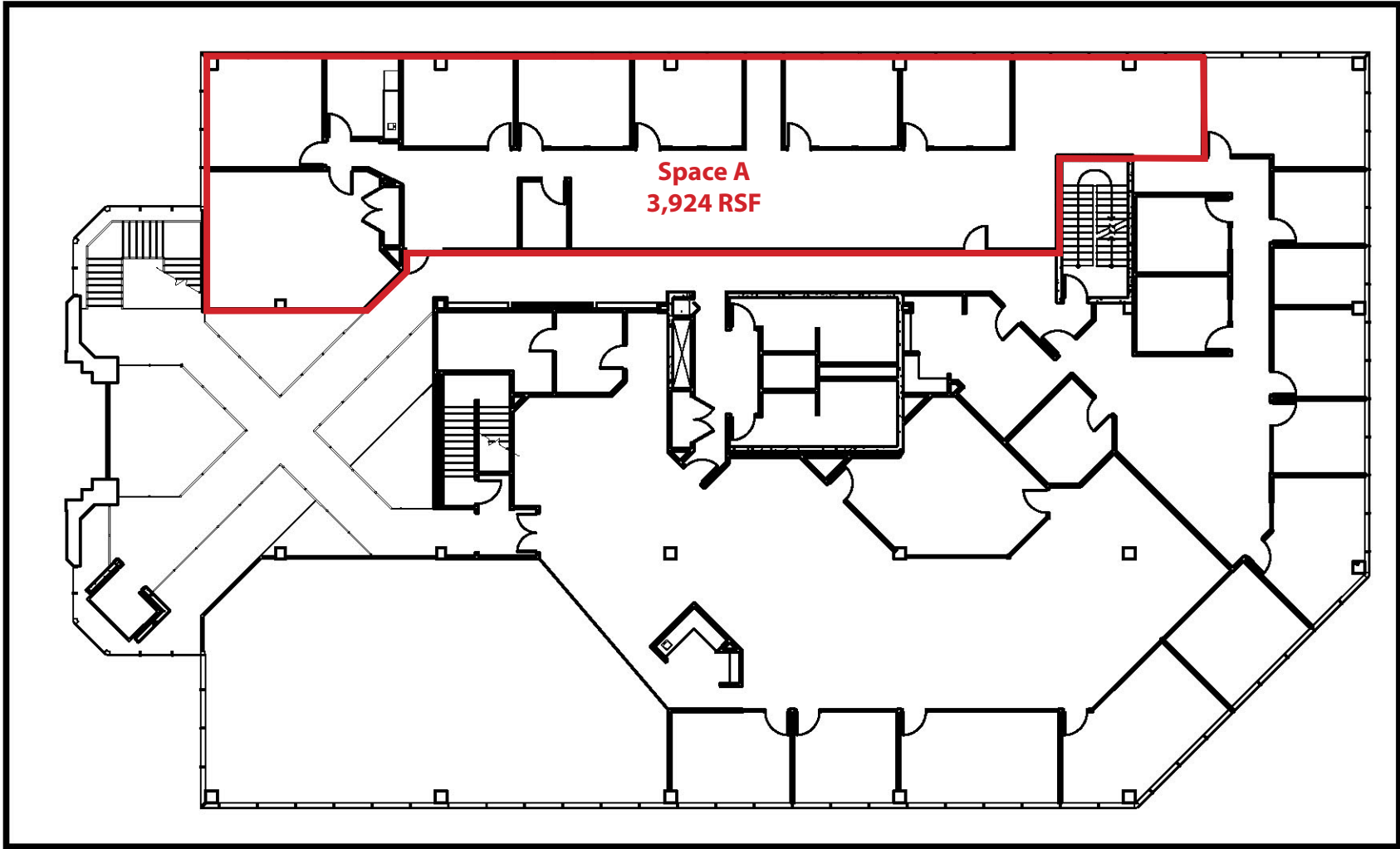
Colorado Springs, CO --

Job No. 05.066  
 Directory Plumtree Office Building  
 File A-2 First Floor  
 Drawn By SPD  
 Date 25 Oct 2007  
 Revised

**FIRST FLOOR**



**YERGENSEN, OBERING & WHITTAKER**  
 A PROFESSIONAL CORPORATION ARCHITECTURE & PLANNING  
 115 S. Weber Colorado Springs, Colorado 475-8133



Space A  
3,924 RSF

2nd Floor Plan

**TOTAL VACANT: 3,924 RSF**

SCALE 1" = 20'-0"



**YERGENSEN, OBERING & WHITTAKER**  
A PROFESSIONAL CORPORATION ARCHITECTURE & PLANNING  
115 S. Weber Colorado Springs, Colorado 475-8133

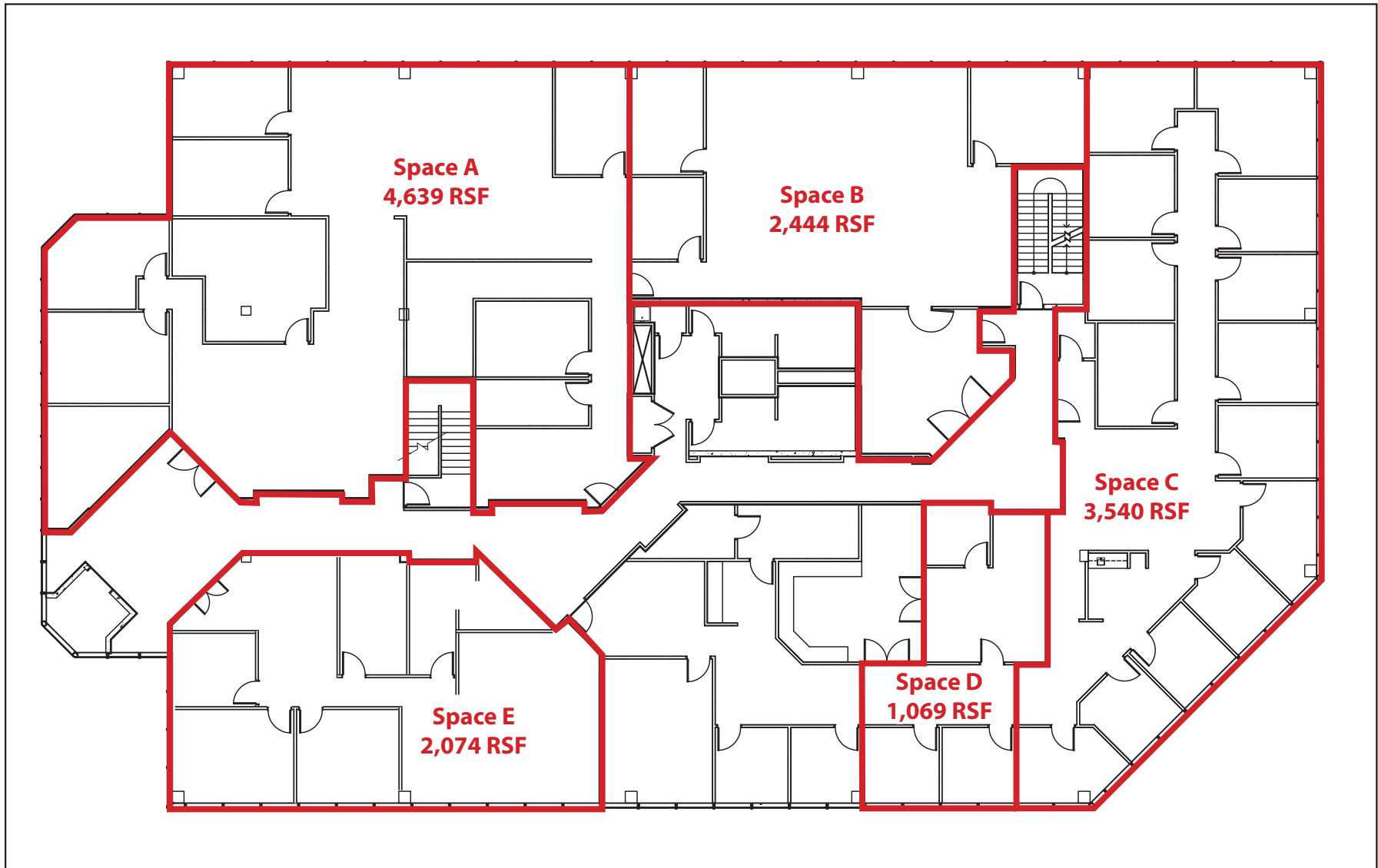
# Academy Corporate Center

5225 North Academy Blvd.

--  
Colorado Springs, CO --

Job No. 05.066  
Directory Plumtree Office Building  
File A-3 Second Floor  
Drawn By SPD  
Date 25 Oct 2007  
Revised

**SECOND  
FLOOR**



3rd Floor Plan

**TOTAL VACANT: 13,766 RSF**

SCALE: 1" = 20'-0"



**YERGENSEN, OBERING & WHITTAKER**  
 A PROFESSIONAL CORPORATION ARCHITECTURE & PLANNING  
 115 S. Weber Colorado Springs, Colorado 475-8133

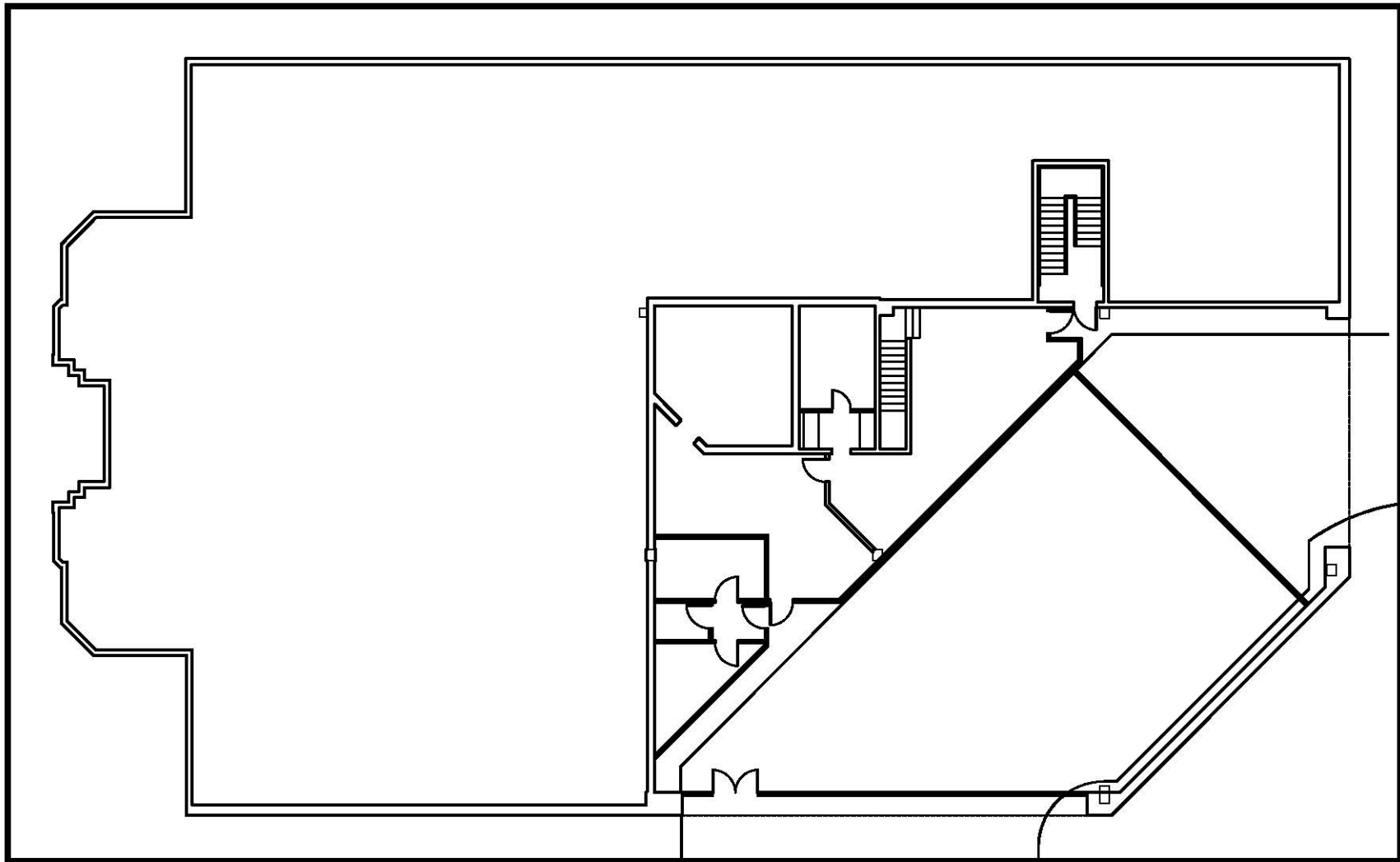
# Academy Corporate Center

5225 North Academy Blvd.

Colorado Springs, CO –

Job No. 05,066  
 Directory Plumtree Office Building  
 File A-4 Third Floor  
 Drawn By SPD  
 Date 2 Nov 2007  
 Revised

**THIRD FLOOR**



Basement Plan

**TOTAL VACANT: 0 RSF**

SCALE: 1" = 20'-0"



**YERGENSEN, OBERING & WHITTAKER**  
A PROFESSIONAL CORPORATION ARCHITECTURE & PLANNING  
 115 S. Weber Colorado Springs, Colorado 475-8133

## Academy Corporate Center

5225 North Academy Blvd.

Colorado Springs, CO --

Job No. 05-066  
 Directory Plumtree Office Building  
 File A-1 Basement Floor  
 Drawn By SPD  
 Date 25 Oct 2007  
 Revised

**BASEMENT  
 FLOOR**