

Doral Terrace

7200 MARLBORO PIKE | DISTRICT HEIGHTS, MARYLAND 20747

4.1 Acres for Ground Lease



Property Highlights

- 4.1 acres for Ground Lease
- Zoned CSC
- Over 345' of frontage at signalized intersection on Marlboro Pike (20,102 CPD)
- Adjacent to regional shopping centers
- Convenient to I-95 and Pennsylvania Avenue



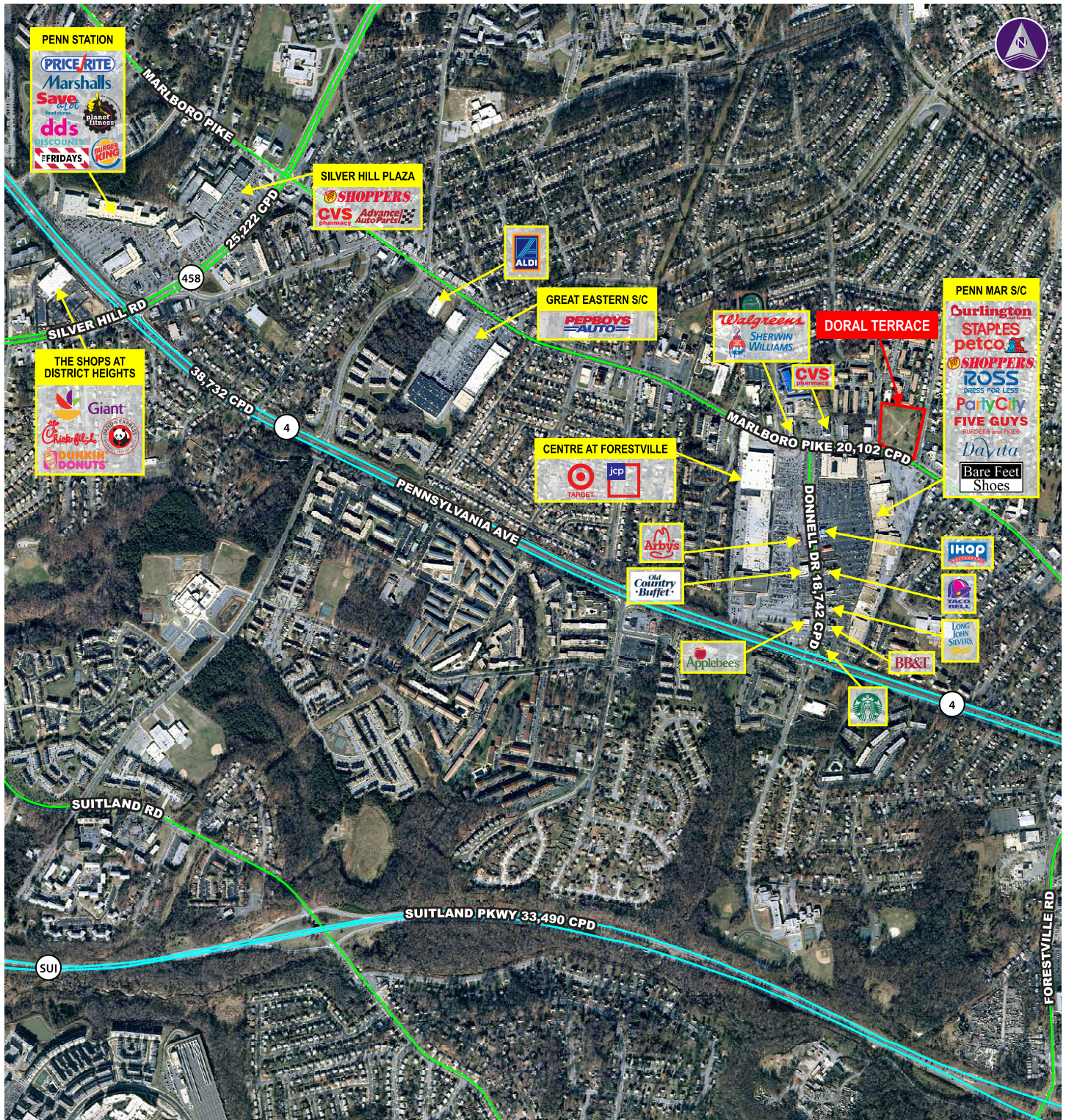
Please Contact

James P. Crilley
240.482.3605 (direct)
301.656.3030 (office)
jcrilley@hrretail.com

Demographics (2014 Estimated)

	1 Mile	3 Mile	5 Mile
Population	17,378	89,943	285,953
Average HH Income	\$69,475	\$72,868	\$70,876
Households	6,439	34,105	111,473

DORAL TERRACE ■ DISTRICT HEIGHTS, MARYLAND



Information herein has been obtained from sources believed to be reliable. While we do not doubt its accuracy, we have not verified it and make no guarantee, warranty or representation about it. Independent confirmation of its accuracy and completeness is your responsibility. H&R Retail, Inc.