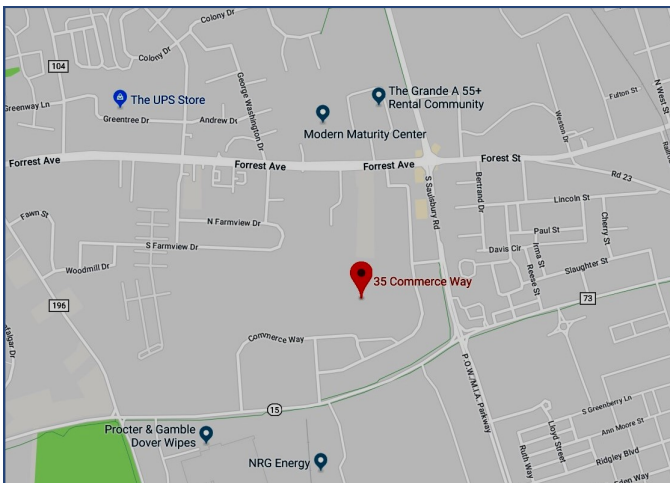


# For Lease



35 Commerce Way

Dover, DE



## Property Information

- ⇒ 120,000+/- SF Office/Warehouse Space
- ⇒ Zoned: IPM
- ⇒ Lease Price: \$4.50 psf NNN (\$1.50 PSF)
- ⇒ Six Dock height doors, One drive in door
- ⇒ 24' ceiling clearance
- ⇒ Sprinkler system installed

For more information contact:

**Charlie Rodriguez**

302-674-3400

ccrod1@aol.com

All information contained herein is believed to be accurate, however was obtained from third parties and R & R Commercial Realty, Inc. does not warrant as to the accuracy submitted, subject to changes or modification without notice. Listing Broker represents the sellers interest.

**R&R Commercial Realty**

46 South State Street  
Dover, Delaware 19901

[www.RandRCommercialRealty.com](http://www.RandRCommercialRealty.com)

302-674-3400 (Office)

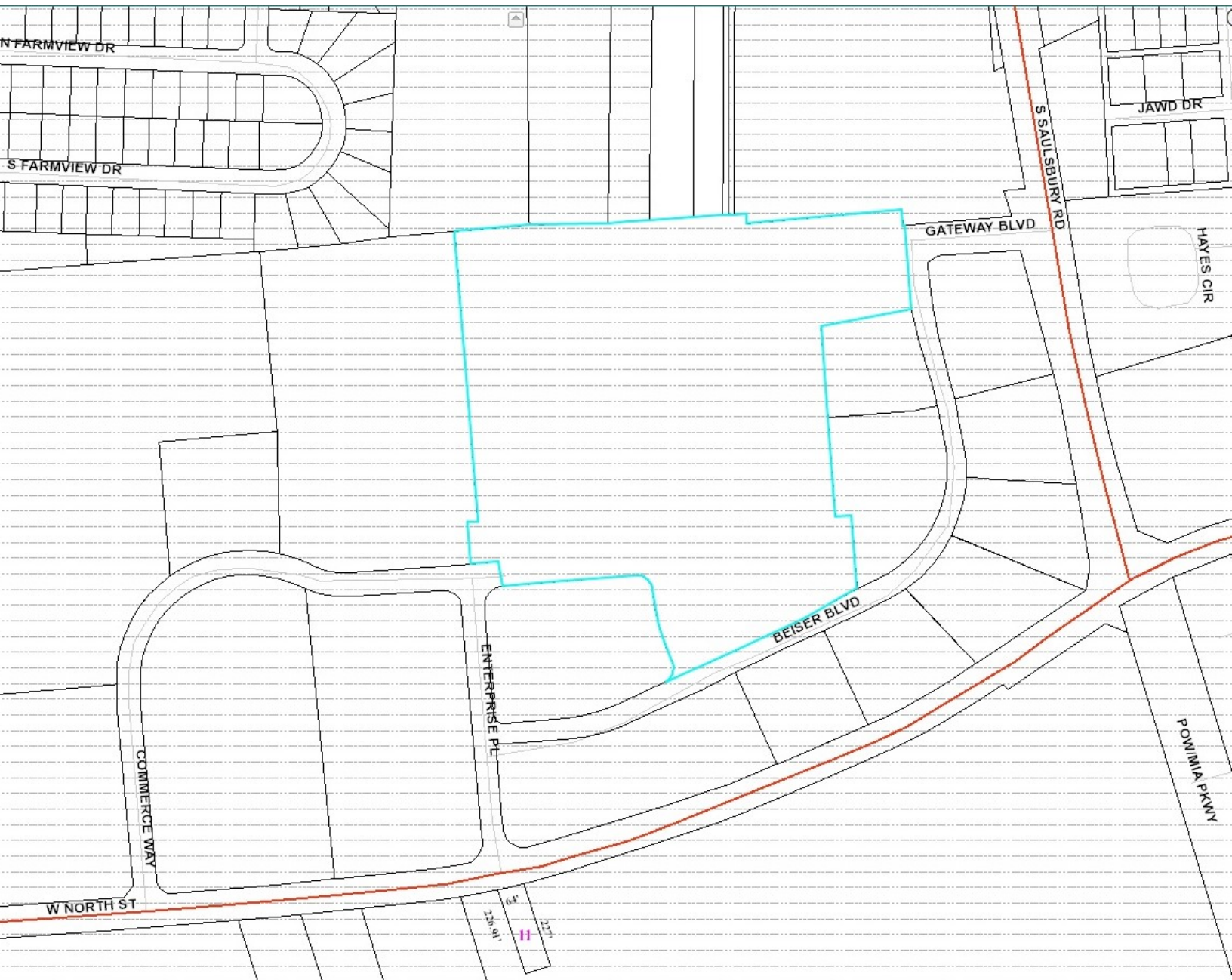
302-674-8479 (Fax)

# For Lease



35 Commerce Way

Dover, DE



For more information contact:

**Charlie Rodriguez**

302-674-3400

ccrod1@aol.com

**R&R Commercial Realty**

46 South State Street  
Dover, Delaware 19901

[www.RandRCommercialRealty.com](http://www.RandRCommercialRealty.com)

302-674-3400 (Office)

302-674-8479 (Fax)

All information contained herein is believed to be accurate, however was obtained from third parties and R & R Commercial Realty, Inc. does not warrant as to the accuracy submitted, subject to changes or modification without notice. Listing Broker represents the sellers interest.



# For Lease



35 Commerce Way

Dover, DE



For more information contact:

**Charlie Rodriguez**

302-674-3400

ccrod1@aol.com

All information contained herein is believed to be accurate, however was obtained from third parties and R & R Commercial Realty, Inc. does not warrant as to the accuracy submitted, subject to changes or modification without notice. Listing Broker represents the sellers interest.

**R&R Commercial Realty**

46 South State Street  
Dover, Delaware 19901

[www.RandRCommercialRealty.com](http://www.RandRCommercialRealty.com)

302-674-3400 (Office)

302-674-8479 (Fax)



# For Lease



35 Commerce Way

Dover, DE



For more information contact:

**Charlie Rodriguez**

302-674-3400

ccrod1@aol.com

All information contained herein is believed to be accurate, however was obtained from third parties and R & R Commercial Realty, Inc. does not warrant as to the accuracy submitted, subject to changes or modification without notice. Listing Broker represents the sellers interest.

**R&R Commercial Realty**

46 South State Street  
Dover, Delaware 19901

[www.RandRCommercialRealty.com](http://www.RandRCommercialRealty.com)

302-674-3400 (Office)

302-674-8479 (Fax)



