

142 Greene Street

AREA:

Entire 4th Floor - 5,625 RSF

RENTAL RATE:

Upon Request

POSSESSION:

Immediate

TERM:

Through June 29, 2021

[DOWNLOAD BROCHURE](#)

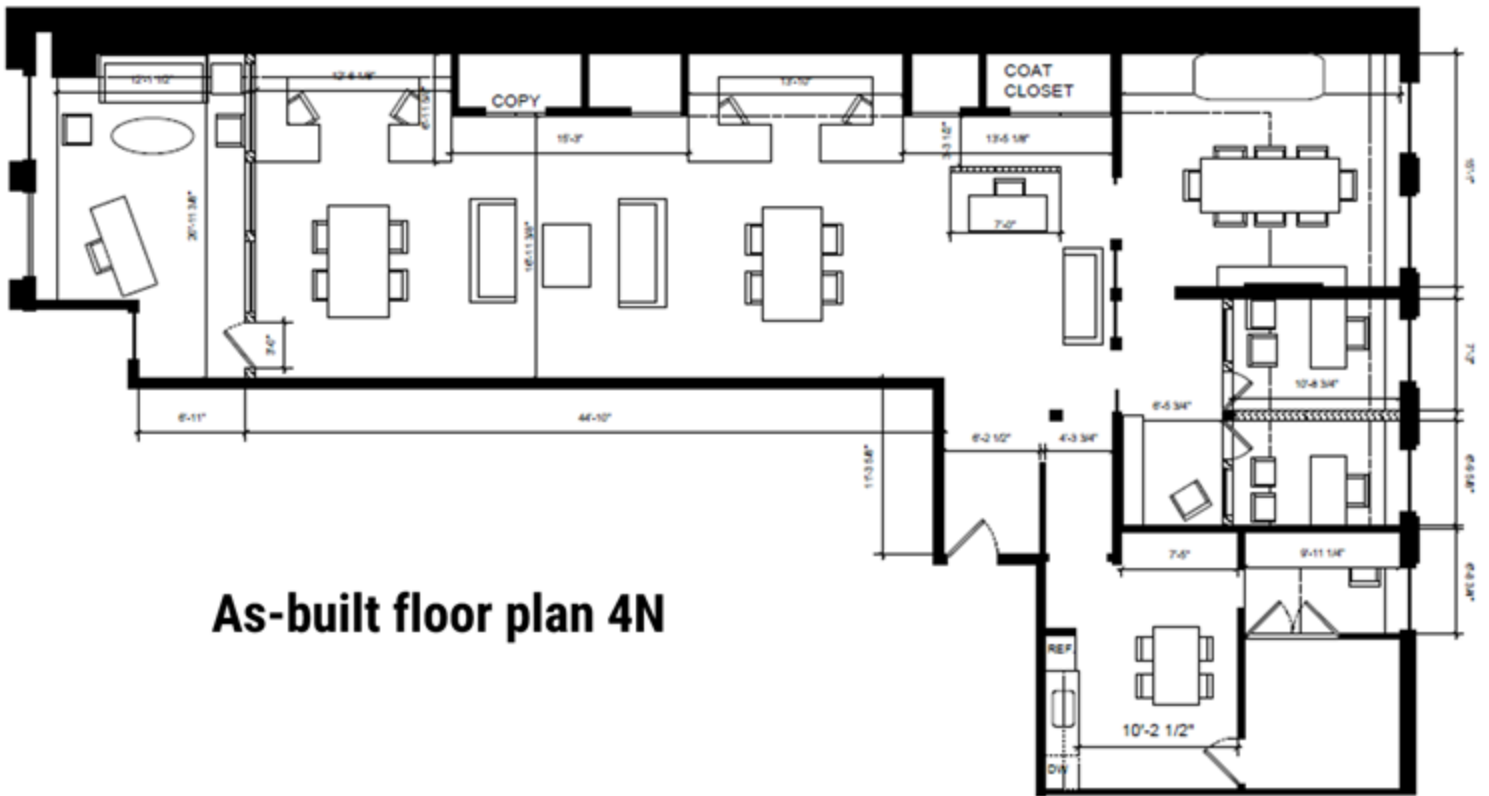


COMMENTS:

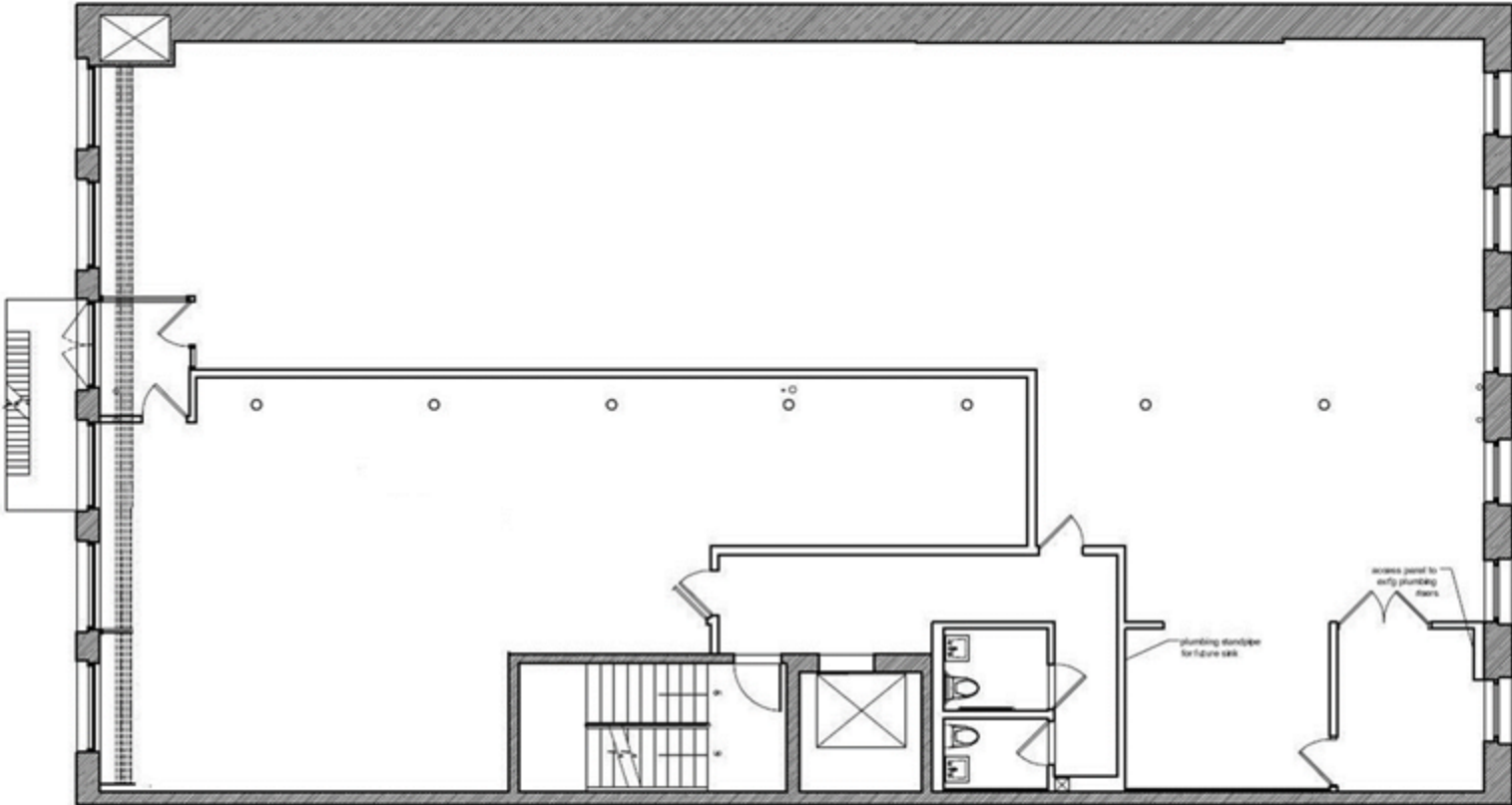
- Beautifully built Soho style space.
- Can be leased as full floor or as units of 3,750 RSF and 1,875 SRF.
- Cast Iron columns and tremendous charm.
- Direct extension is available.
- High end existing installation with mix of glass front offices and open area.







As-built floor plan 4N



Full floor plan

Greg Wang
Managing Director
212.372.2134
gwang@ngkf.com

Emma Kistler
Associate
212.372.2403
emma.kistler@ngkf.com



ngkf.com

125 Park Avenue, New York, NY 10017 212-372-2000

The information contained herein has been obtained from sources deemed reliable but has not been verified and no guarantee, warranty or representation, either express or implied, is made with respect to such information. Terms of sale or lease and availability are subject to change or withdrawal without notice.