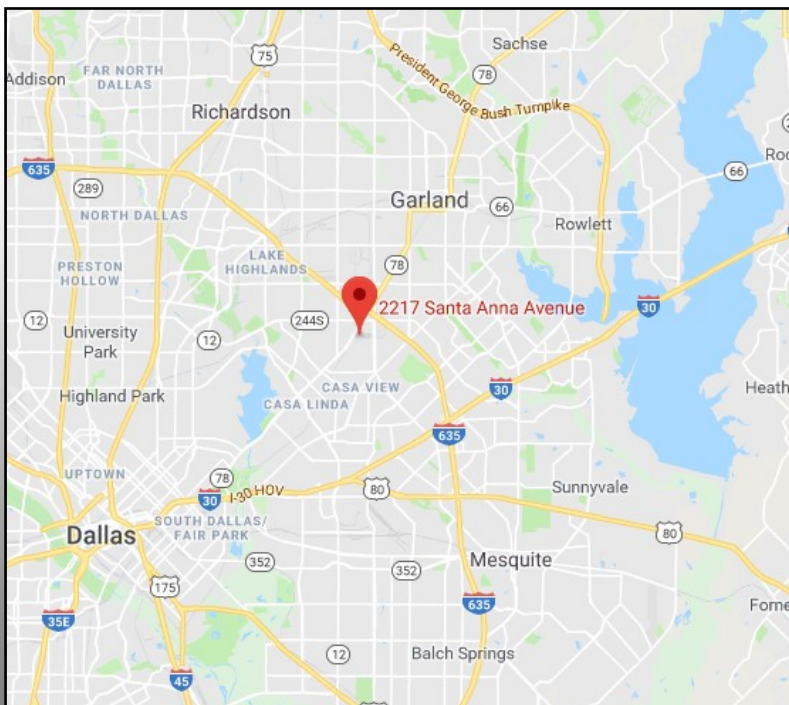


FOR SALE/ LEASE: 57,144 SQUARE FEET

2217-2229 SANTA ANNA AVE, DALLAS, TX 75228

INDUSTRIAL REAL ESTATE BROKERAGE

WWW.MERCER-COMPANY.COM



## DETAILS

### AVAILABLE FOR SALE/ LEASE

- ◆ TOTAL SF: 57,144
- ◆ OFFICE SF: 8,000
- ◆ CLEAR HEIGHT: 18'
- ◆ DOCK DOORS: 4
- ◆ GRADE LEVEL DOOR: 2
- ◆ HEAVY POWER
- ◆ FENCED OUTSIDE STORAGE
- ◆ SPRINKLERED
- ◆ PARKING: 30 SURFACE SPACES

TUCKER CASON  
CELL 214.802.0940  
TCASON@MERCER-COMPANY.COM

DAVID WILGANOWSKI  
CELL 214.903.6791  
DWILGANOWSKI@MERCER-COMPANY.COM

FOR SALE/ LEASE: 57,144 SQUARE FEET

2217-2229 SANTA ANNA AVE, DALLAS, TX 75228

INDUSTRIAL REAL ESTATE BROKERAGE

WWW.MERCER-COMPANY.COM



Available SF: 29,226

Office SF: 5,500

Loading: 1 Dock Door & 1 Grade Level Door

Available: 09/01/2019

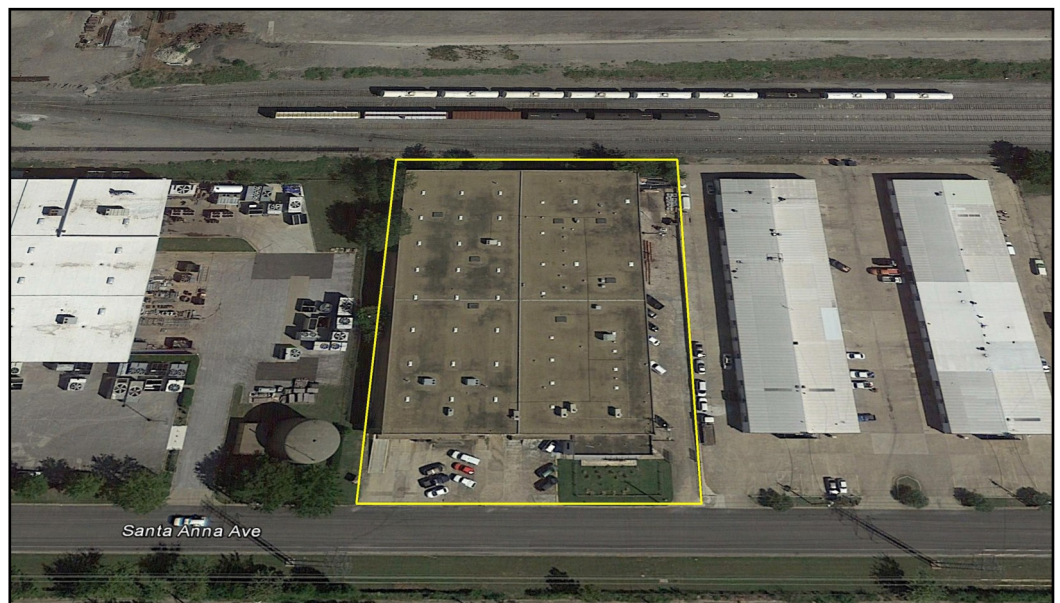
Asking: \$5.00/sf Gross

2229

2221

LEASED

2217



The information contained herein has been given to us by the owner of the property or other sources we deem reliable. We have no reason to doubt its accuracy, but we do not guarantee it. All information should be verified before purchase or lease.