

FOR LEASE

1280 Harrison St

1280 HARRISON STREET, SEATTLE, WASHINGTON 98109

5,365 SF RETAIL/OFFICE AND RESTAURANT SPACE

RETAIL



FOR LEASE

1280 Harrison St

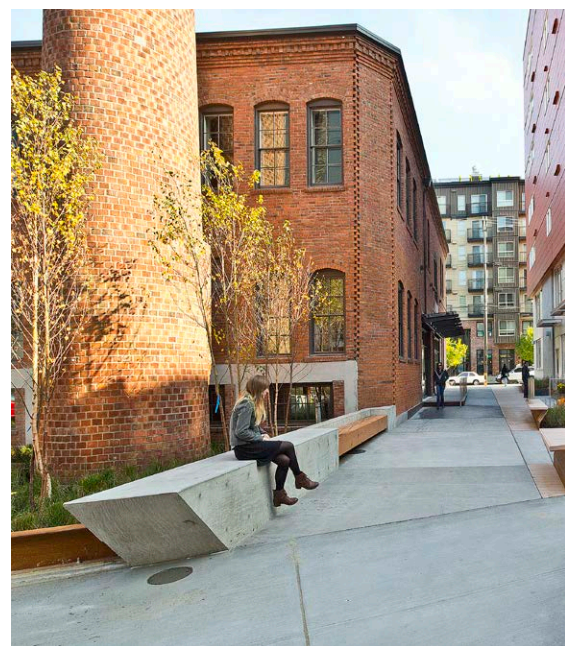
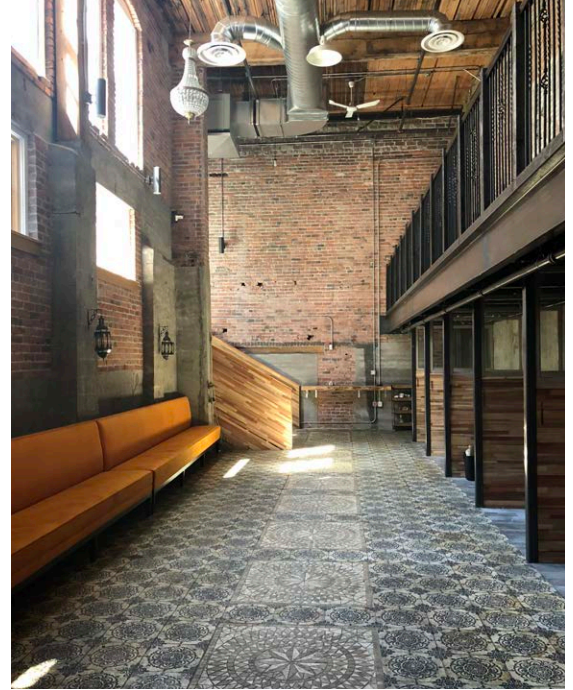
1280 HARRISON STREET, SEATTLE, WASHINGTON 98109



PROPERTY INFO

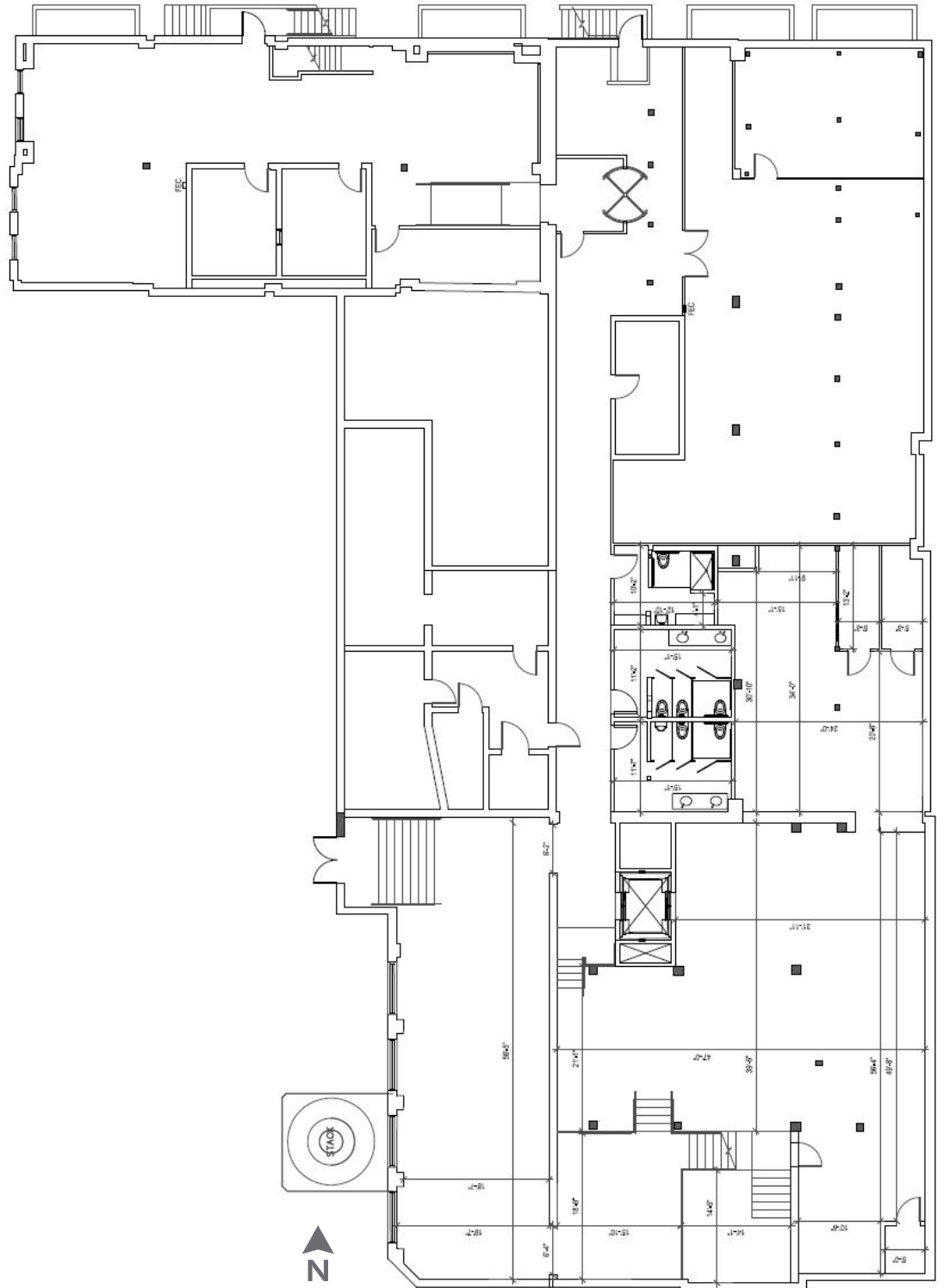
PRIME SOUTH LAKE UNION CASCADE NEIGHBORHOOD

- + Adjacent to fully leased Amazon.com building
- + Nearby tenants include:
 - REI Flagship
 - PlayDate SEA
 - Feierabend
 - PRO Sports Club
 - wework
 - CycleBar
- + Captive audience with 278 residential units, 293 new residential units across the street, and a strong daytime population



SITE PLAN

5,365 SF



FOR LEASE

1280 Harrison St

1280 HARRISON STREET, SEATTLE, WASHINGTON 98109

RETAIL

BLOCK 30

- A. Swedish Primary & Urgent Care

BLOCK 32

- A. Pam's Kitchen

BLOCK 33

- A. Row House Café

BLOCK 34

- A. Seattle Family Chiropractic
- B. Home Deli & Grocery
- C. SalonCentric
- D. Lake Union Veterinary Clinic

BLOCK 35

- A. Bright Horizons Childcare
- B. PlayDate SEA
- C. Naanz Kitchen + Bar

BLOCK 36

- A. PRO Sports Club

BLOCK 43

- A. Pilates Seattle International
- B. Elite Sports & Spine
- C. Crossfit SLU

BLOCK 46

- A. Metropolitan Deli + Café
- B. Osteria Rigoletto

BLOCK 47

- A. Zaw Pizza
- B. Feierabend
- C. Caffe Torino
- D. Victory Lounge
- E. Lo-Fi Performance Gallery
- F. Foreign Auto Rebuild

BLOCK 55

- A. Taco Del Mar
- B. Nollie's Café
- C. Paddy Coyne's Irish Pub

BLOCK 57

- A. School Employees Credit Union of Washington

BLOCK 64

- A. Soup Daddy Soups

BLOCK 65

- A. Royal Palace Bar and Grill

BLOCK 66

- A. Shine Cancer Specialty Store

BLOCK 67

- A. Lunchbox Laboratory
- B. Mad Pizza
- C. Tottini
- D. Golftec
- E. The Fitness Outlet
- F. Vivace Espresso Bar
- G. Hipcooks
- H. Beba's Deli & Dos Amigos Café
- I. Stretch Physical Therapy

BLOCK 68

- A. REI
- B. World Wraps

BLOCK 76

- A. Feathered Friends
- B. Play it Again Sports
- C. Precor Home Fitness
- D. Greg's Japanese Auto
- E. El Corazon

BLOCK 81

- A. Super Supplements
- B. Michael's Market
- C. Subway
- D. Bakker's Fine Cleaning
- E. US HealthWorks

BLOCK 82

- A. 24 Hour Fitness
- B. Ali's Food & Deli
- C. Seattle's Best Karaoke
- D. Subway

BLOCK 83

- A. SpringHill Suites



CONTACT US

Susie Detmer

Senior Vice President
 +1 206 292 6040
 susie.detmer@cbre.com

Alex Williams

Associate
 +1 206 292 6025
 alex.williams2@cbre.com

CBRE, Inc.
 1420 5th Avenue
 Suite 1700
 Seattle, WA 98101

© 2019 CBRE, Inc. All rights reserved. This information has been obtained from sources believed reliable, but has not been verified for accuracy or completeness. You should conduct a careful, independent investigation of the property and verify all information. Any reliance on this information is solely at your own risk. CBRE and the CBRE logo are service marks of CBRE, Inc. and/or its affiliated or related companies in the United States and other countries. All other marks displayed on this document are the property of their respective owners. Photos herein are the property of their respective owners and use of these images without the express written consent of the owner is prohibited. jm3.14.19