



2500 Sylon Boulevard

Hainesport, New Jersey 08036

Property Description

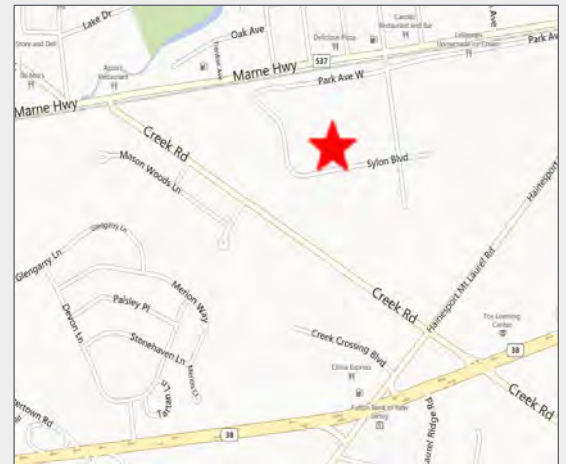
- 27,000± SF building for lease
- 2,750± SF office space
- 18'± clear ceilings in warehouse
- (12) 8' x 8' tailgates
- (2) drive-in doors
- Men and womens restrooms in both office and warehouse
- 400 amps, 480 volts, 3 phase
- Wet sprinkler system
- 45' x 63' column spacing
- Approximately half of warehouse space has racking
- Parking for 50± cars
- Gas heat
- Industrial zoning

Base Lease Rate

\$12,000 per month

NNN Costs

\$3,250 per month



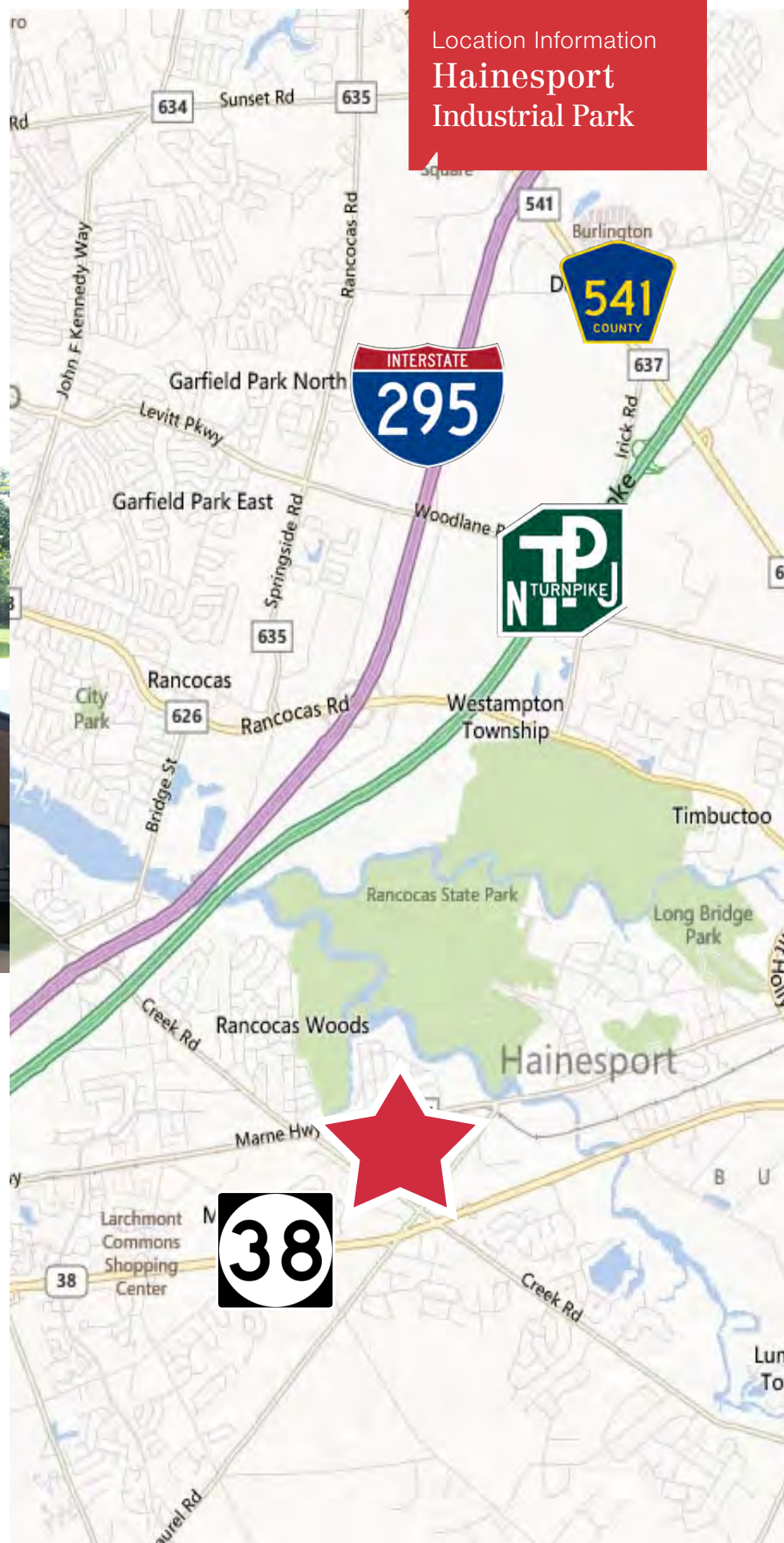
For more information:

Roy Kardon, SIOR

cell +1 610 246 7118

roy.kardon@naimertz.com

Located in the Hainesport Industrial Park minutes from Route 38. Easy access to Route I-295 and the New Jersey Turnpike. Less than an hour from Center City Philadelphia.



Location Information
**Hainesport
Industrial Park**

For more information:

Roy Kardon, SIOR

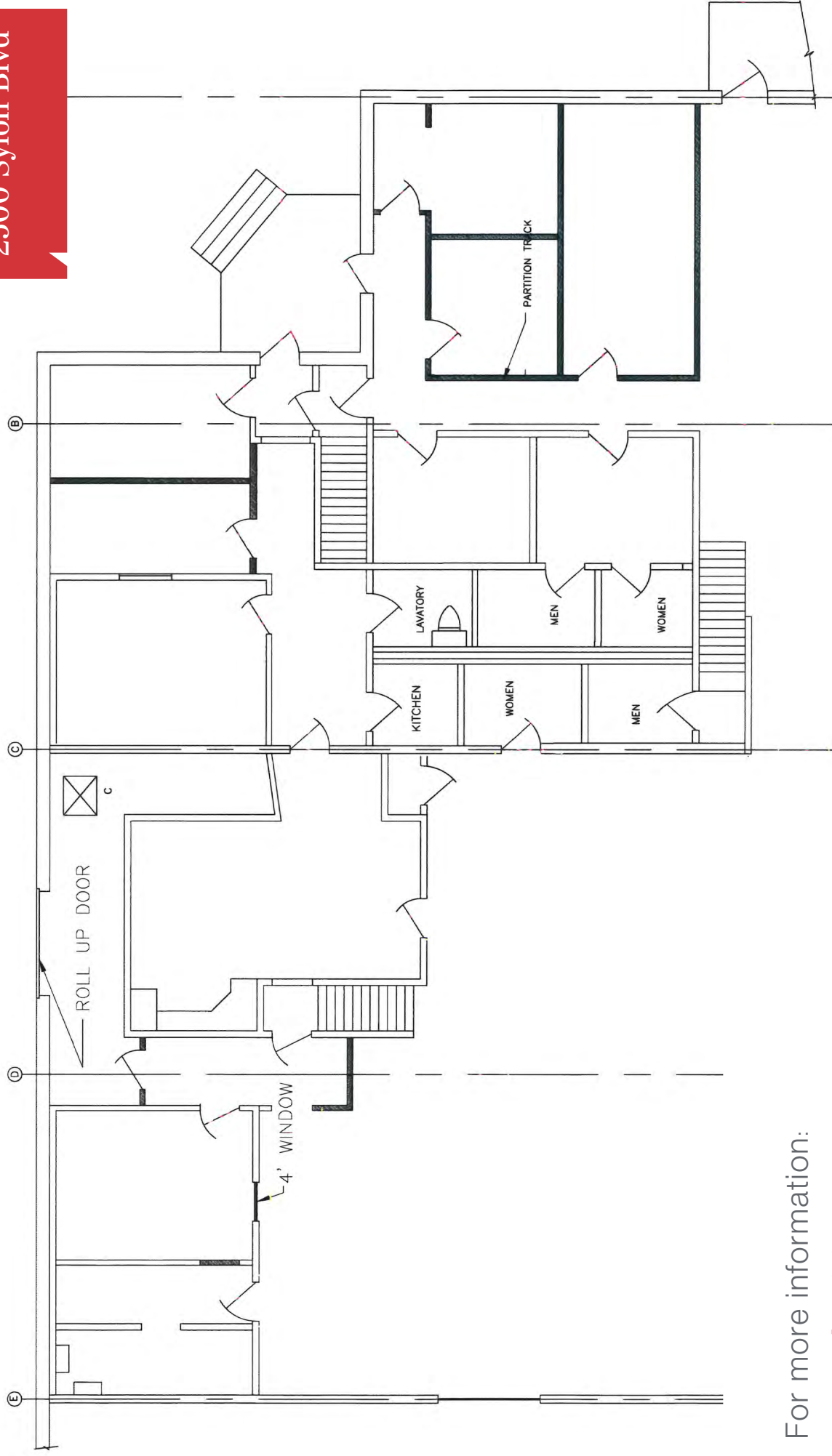
cell +1 610 246 7118

roy.kardon@naimertz.com



21 Roland Ave
Mount Laurel, New Jersey 08054
+1 856 234 9600
naimertz.com

Floorplan
2500 Sylon Blvd



For more information:

Roy Kardon, SIOR

cell +1 610 246 7118

roy.kardon@naimertz.com

Naimertz

21 Roland Ave
Mount Laurel, New Jersey 08054
+1 856 234 9600
naimertz.com