

**VIRTUAL TOUR AVAILABLE! CLICK HERE!**



**1980** UNION STREET, SUITE 8  
SAN FRANCISCO, CA 94123  
COW HOLLOW DISTRICT

**PRIME, SPACIOUS & UPSCALE  
SALON/OFFICE SPACE IN  
THE HEART OF COW HOLLOW**

**PRICE: \$2,999 PER MONTH**

**COW HOLLOW DISTRICT**  
BETWEEN BUCHANAN & LAGUNA STREETS

**SIZE**

**±1,200 SF**

RETAIL/OFFICE SPACE FOR LEASE

**NOW AVAILABLE**  
HEAVY FOOT TRAFFIC ON  
PREMIER UNION STREET BLOCK

- Dramatic window lining overlooking bustling Union Street
- Terrific branding opportunity
- Second Floor
- 98 Walk Score® (WALKER'S PARADISE)
- 91 Transit Score® (RIDER'S PARADISE)
- Nearby many local and national tenants



INCORPORATED | EST. 1922

This Statement with the information it contains is given with the understanding that all negotiations relating to the purchase, renting or leasing of the property described above shall be conducted through Blatteis Realty Company. The above information, while not guaranteed, has been secured from sources believed to be reliable. Blatteis Realty has not verified its accuracy and make no guarantees, warranty or representation regarding this information and it is published subject to the possibility of errors, omissions, changes of listing information including price, term, financing, or withdrawal without notice. We include projections, estimates, opinions and/or assumptions, for example only, and they may not represent current or future performance of the property. You should consult your tax and legal advisors before to verify the validity of estimates. All commercial or mixed-use property presented by Blatteis Realty is subject to local zoning codes and regulations. It is the sole responsibility and liability of tenants and property owners to obtain all applicable required building permits and/or certificates from the local city/town Planning Department before commercial property use can commence or a building can be built.

**JEREMY BLATTEIS**

415.321.7493 | jfb@brsf.co | DRE #01460566

**sfretail.net**



INCORPORATED | EST. 1922

**JEREMY BLATTEIS**  
415.321.7493 | [jfb@brsf.co](mailto:jfb@brsf.co) | DRE #01460566

[sfretail.net](http://sfretail.net)

This Statement with the information it contains is given with the understanding that all negotiations relating to the purchase, renting or leasing of the property described above shall be conducted through Blatteis Realty Company. The above information, while not guaranteed, has been secured from sources believed to be reliable. Blatteis Realty has not verified its accuracy and make no guarantees, warranty or representation regarding this information and it is published subject to the possibility of errors, omissions, changes of listing information including price, term, financing, or withdrawal without notice. We include projections, estimates, opinions and/or assumptions, for example only, and they may not represent current or future performance of the property. You should consult your tax and legal advisors before to verify the validity of estimates. All commercial or mixed-use property presented by Blatteis Realty is subject to local zoning codes and regulations. It is the sole responsibility and liability of tenants and property owners to obtain all applicable required building permits and/or certificates from the local city/town Planning Department before commercial property use can commence or a building can be built.

44 Montgomery Suite 1288, San Francisco, CA 94104 | t: 415.981.2844 | f: 415.981.4986 | [info@brsf.co](mailto:info@brsf.co) | DRE #01421282

# NEARBY TENANTS



WILDSEED



LORNA JANE



VUORI



EQUINOX



THE NORTH FACE



LULULEMON



PERRY'S



SEPHORA



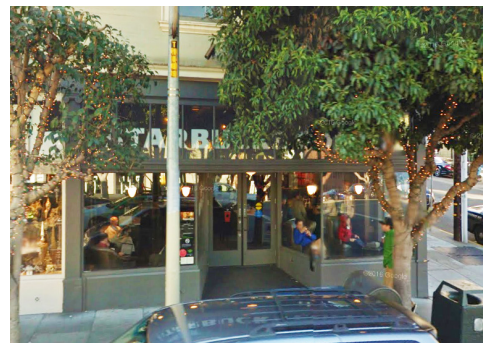
SOULCYCLE



WELLS FARGO



LA BOULANGE



STARBUCKS



INCORPORATED | EST. 1922

**JEREMY BLATTEIS**  
415.321.7493 | [jfb@brsf.co](mailto:jfb@brsf.co) | DRE #01460566

[sfretail.net](https://sfretail.net)

This Statement with the information it contains is given with the understanding that all negotiations relating to the purchase, renting or leasing of the property described above shall be conducted through Blatteis Realty Company. The above information, while not guaranteed, has been secured from sources believed to be reliable. Blatteis Realty has not verified its accuracy and make no guarantees, warranty or representation regarding this information and it is published subject to the possibility of errors, omissions, changes of listing information including price, term, financing, or withdrawal without notice. We include projections, estimates, opinions and/or assumptions, for example only, and they may not represent current or future performance of the property. You should consult your tax and legal advisors before to verify the validity of estimates. All commercial or mixed-use property presented by Blatteis Realty is subject to local zoning codes and regulations. It is the sole responsibility and liability of tenants and property owners to obtain all applicable required building permits and/or certificates from the local city/town Planning Department before commercial property use can commence or a building can be built.

44 Montgomery Suite 1288, San Francisco, CA 94104 | t: 415.981.2844 | f: 415.981.4986 | [info@brsf.co](mailto:info@brsf.co) | DRE #01421282

# UNION STREET TENANT MAP

GOUGH TO STEINER

California Weight Clinic	1700
Güzel Jewelry Design	1714
Union French Cleaners	1718
Available Retail Space for Lease	1728
Dermaplus Skin + Body	
Current Clothing	1738
Dermal Essentials	
Urban Green Investments	1746
Moulin Pooch	1750
Strip Wax Bar	1764
Pink Bunny	1772
Chic Nails Salon	
Dazzle Bar, One Touch Flooring	1782
Dantone Boutique	1784
Retail Space	1796

Pane e Vino Trattoria	1715
Crunch Fitness	1725
CryoSF	1735
City Living SF	1737
TC Jewelers	1739
Liberto Co Hat Shop	
VW Nail Care	1745
Cow Hollow Shoe Repair	1747
Partners in Crime	1749
Salon Macias, Red Union Salon	1757
Marina Dental Care	1763
ML Hair Studio	1771
The Lotus Method	1775
Roam Artisan Burgers	1785
Restaurant Space	1787
Veo Optics	1793

## OCTAVIA STREET

GetzWell Pediatrics	1800
Organic Shimmer	1804
SF Color Collective	1808
Bare	1810
Retail Space	1814
Salon Space	1816
Tonal Gym	1824
Sprout	1828
Caffe Union	1830
KORE Collective	1832
KAIYO	1838
Topdrawer	1840
G Grover Interiors	1844
O'Dette Mortgage Group	1842
Morning Lavender	1846
Nanskin, Limited Watches, Inc., Laurie Arons Special Events	1850
Ambiance	1858
Shannon Leahy Events	1862
Kryolan City San Francisco	1864
Retail Space	1870
UNTUCKIT	1872
Laser Away	1878
Serge Matt Antiques	1882
Papyrus	1888
Yoga Flow SF	1892
Neomodern	1898

Fenzi Uomo	1801
B&A Estate	1803
Capannina	1809
Acorn Home Furnishings & Design	1815
One Medical	1823
SKIN Medical Spa	1825
Winnie Couture	1827
LA Paul & Associates, BACK OF THE HOUSE, Inc.	1829
Alma's European Skin Care	1831
Carats & Stones, KTD Fine Jewelers	1833
Candid Studio	1837
Marmalade Boutique	1843
Tamashisoul Sushi Bar	1849
Bar Space	1851
Eurasian Interiors	1861
Jest Jewels	1869
Hollow Cow (Available Restaurant For Lease)	1875
Drip Doctors (Medical Spa)	1877
Sunglass Hut	1887
Berenice Hair Salon, Thermal Reconditioning SF	1889
doob 3D	1895
Starbucks	1899



## LAGUNA STREET

Wells Fargo Bank	1900
Karma Yoga	1906
Public Parking	1910
Birdies	1934
Compass	1936
State Farm Insurance Agent	1942
Perry's	1944
Women's Integrative Therapy	1952
Lashfully, The Caviar Co., Adore Born to Love Shoes	1954
Various Medical Offices	1956
PRACTICE San Francisco (Yoga)	1958
Bonobos	1964
The North Face	1974
Available Retail Space for Lease	1980
Extreme Pizza, The Stylist SF	
CrawlSF and Bar None	
Juice Shop	1994
Arthur Sebastian Hair Salon, Brown Sugar Boutique	1996
Gio Gelati	1998

Bus Stop Saloon	1901
Oxygen Massage, Flourish Skin and Wax	1905
California Yoga Sport	1907
Epicurean Trader	1908
La Boulangerie	1909
Italian Homemade Co.	1919
Office Space	1929
Union Street Jewelers, Evokd Marketing Agency	1931
Zen Beauty Spa, Jinza Couture	1933
Dreamy Angels	1943
B Brow Lounge	1945
HELPER'S Artisan Bazaar	1947
Mabel Chong	1949
Closet 1951	1951
Urban Remedy	1957
Dahlia, High Society, Sporting Co	1969
Pacific Heights Place	1977
The Blue Light	1979
Lululemon Athletica	1981
Bank of America	1995

Lashfully, The Caviar Co., Adore Born to Love Shoes

LA BOULANGERIE  
- SAN FRANCISCO -

SUBJECT SITE

1980 UNION STREET STE. 8

Available Salon/Office Space for Lease

## BUCHANAN STREET

Wildseed	2000
Marcello Watches, AngelRush	2030
Palm House, Union Street Shoe Repair	2032
Impact Builders, LLC	2034
Images of the North	2036
Milvali Salon, Rosewater Skin Care	2040
Titika Active Couture	2042
The Naked Market, G T Financial Group	2044
Fog City Leather, Cucalon Orthodontics	2060
Various Chiropractic Offices	2064
Le Marcel Bakery	2066
(Available) Blu Bungalow	2068
Vuori	2070
Available Retail Space for Lease	2072
Modern Citizen	2078
(Available) Pacific Medical Center	2082
Sweaty Betty	2086
Varioty	2088
Lorna Jane	2090

Union Street Plaza & Garage	2001
Comerica Bank, Firuze	
Shaw Shoes, Hunan Empire	
ARTEMIA Communications Inc	
Flores	2030
Upscale Construction	2031
FolioAvenue Publishing Service	
Bien-Etre Beaute, Mina's Tailor Studio,	
Le Visage Lift Contour, Luxe Premier Travel	
Available Restaurant Space for Lease	
Lama's Boutique	2033
Equinox, illy Caffè, Earthbar	2035
Kühl	2055
Sephora	2071
Serenity Wellness Spa	2083
Soul Cycle	2087
	2095

vuori

LORNA JANE  
ACTIVE LIVING

EQUINOX  
SEPHORA  
SOULCYCLE

## WEBSTER STREET

See Eyewear	2100
Available Office Space for Lease	2104
Equity One	2106
Lush	2116
Goldsmith	2118
Brit + Co	2120
Hint, Inc., Reid's Tailoring, Maria Dell Talent	2124
Contrada Pizza	2136
Brixton	2140
Van Galen Upholstery	2150
Z Gallerie	2154
Verizon, Pressed Juicery	2162
Union Street Paperly	2166
Alana Leigh Designs	
Casper Mattress	2174
Little Gem	2184
Krimsa Fine Rugs & Decor	2190
Michael's Wine & Spirits	2198

Adair Design Group	2101
VACANT	2103
Hill & Co.	2107
Lash Lab	2113
Joy Joy Nail	2115
Motion Wireless & Gifts	2117
isalis, Bickle's Surplus	2127
Istanbul Collection	2133
AT&T Store	2135
Nail Today, Sui Generis Consignment	2147
Anomie, ATYS Contemporary Living	2149
Jo Malone	2157
Available	2159
Vera Weiler Electrolysis	2161
Bubble	2163
West Coast Wine & Cheese, Gunilla Skin Butik	2165
STYLEDASH Beauty Lounge	2167
Juicy News	2181
Cameron James Salon	2185
Nice Cuts	2187
Eyes in Disguise	2189
Union Street Coffee Roastery	2191

## FILLMORE STREET

Prudential California Realty, The Bud Stop	2200
Law Offices	2204
1887 Dance Shop	2206
Allstate Insurance	2208
Sur La Table	2224
Pilates Pro Works	2238
Wanderlust Salon, Bella Bridesmaid,	2250
Jutta Reichart Associates, Union Street Dental Care	
Lovely Bridal, Jute	2254
Made By True, Lovely	2266
Lili Henry - Personal Fashion Stylist	2272
Modica Home	2274
2nd Floor Office Space for Lease	2276
Danielle	2278
Legal Offices	2280
Various Clinical Offices	2282
Bamboo Nail Salon	2284
Great Tan	2286
eSalon	2288
Jenkins Garage Door Repair	2292
Rose's Cafe	2298

Loving Cup	2201
Images For Hair	2203
Le Bouquet	2205
Nails 2001	2213
Sofa U Love	2217
Gamine	2223
Various Clinical Services, The Pure Skin	2225
Union Street Inn	2229
Teevan Restoration	2247
Nuvertex Health	2253
Green Twig Salon, SEO Firepower	2263
Wrecking Ball Coffee Roasters	2271
GALA Boutique	2277
Neja Cosmetics	2285
Fondue Lab	2289
Marina Submarine	2299