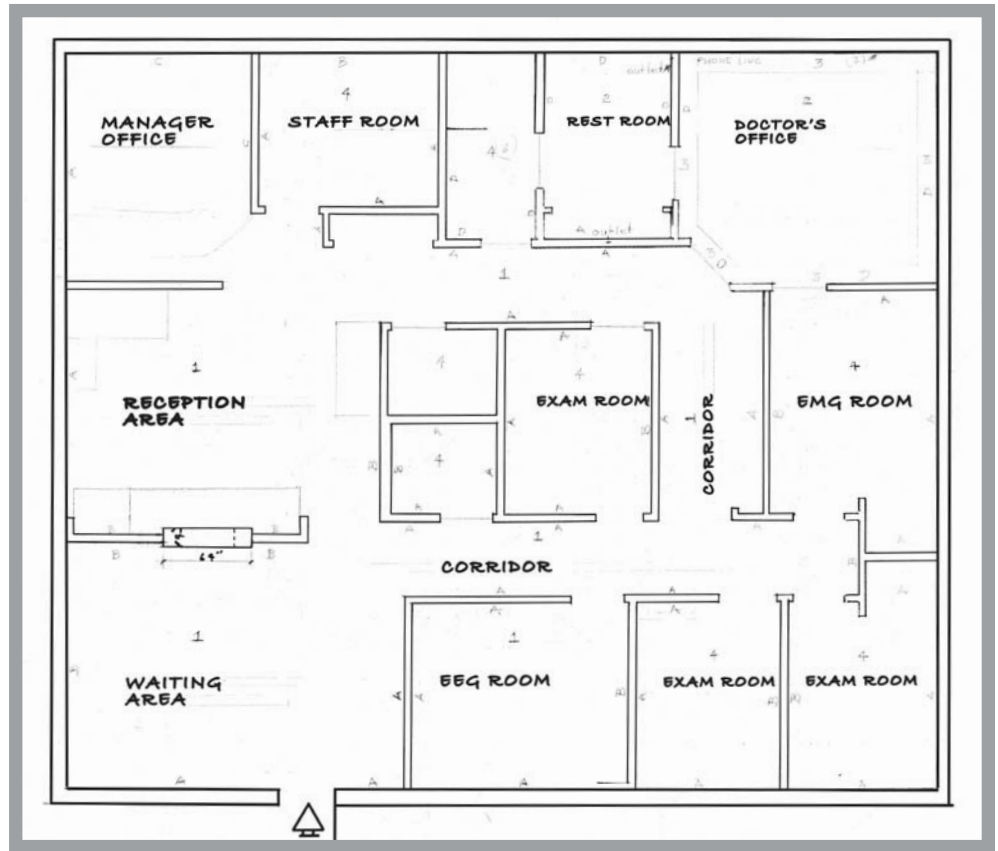


1400 EL PASO ST

FLOOR PLAN



PROPERTY HIGHLIGHTS

- Free Standing Medical Office Building
- ±.37 miles to The Hospitals of Providence Memorial Campus
- ±.28 miles to Las Palmas Medical Center
- ±1.21 miles to The Hospitals of Providence Sierra Campus
- Easy access to and from Interstate 10
- Fiber optic cable building (Spectrum)

PROPERTY INFORMATION

- Address: 1400 N El Paso St., Building C
El Paso, TX. 79902
- Legal Description: MEDICAL PLAZA OFFICE CONDOMINIUM
BLDG C & LAND AREA & UND 17.6% INT
IN CNM AREA (17290 SQ FT)
- Size: 2,030 SF
- Zoning: A-O SC
- Monthly Association Dues: TBD