

4 4 2 5

NORTH 24TH STREET



**OFFICE SUITE  
AVAILABLE IN THE  
CAMELBACK CORRIDOR**

Exclusive Advisor

**JOE VALE**

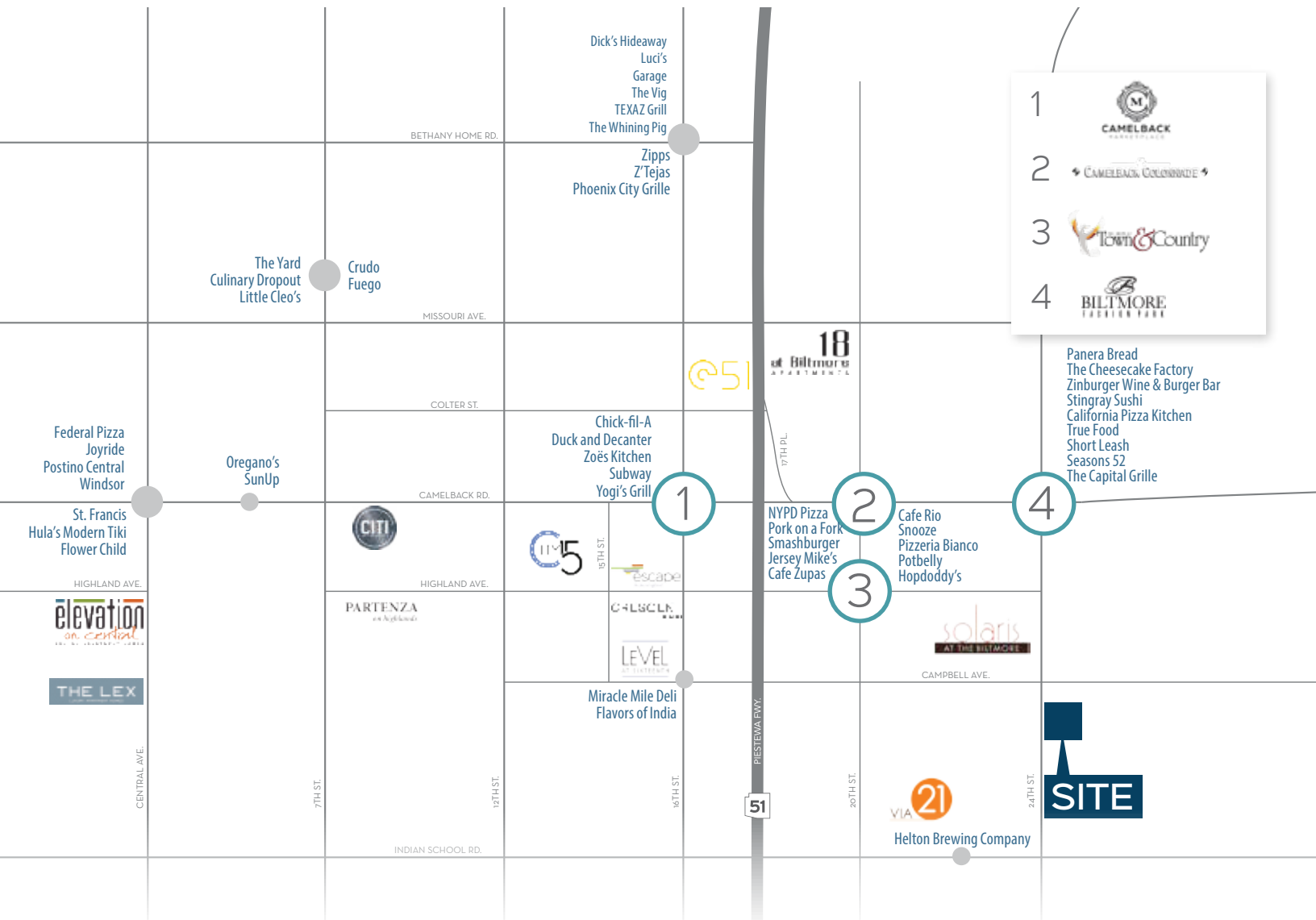
+1 602 229 5856 | [joe.vale@cushwake.com](mailto:joe.vale@cushwake.com)



**CUSHMAN &  
WAKEFIELD**

2555 E. Camelback Rd, Suite 400 | Phoenix, Arizona 85016  
ph: +1 602 954 9000 | fx: +1 602 253 0528 | [cushmanwakefield.com](http://cushmanwakefield.com)





- 1 CAMELBACK MARKETPLACE
- 2 CAMELBACK COLONNADE
- 3 TOWN & COUNTRY
- 4 BILTMORE FASHION PARK

- Panera Bread
- The Cheesecake Factory
- Zinburger Wine & Burger Bar
- Stingray Sushi
- California Pizza Kitchen
- True Food
- Short Leash
- Seasons 52
- The Capital Grille

### Property Highlights

- 24th Street Monument Signage Available
- Down the Street from Biltmore Fashion Park, The Camby Hotel & AMC Esplanade 14
- Numerous Retail, Service & Restaurant Amenities Nearby
- Covered Parking Available

### Availability

Suite 175 – ±1,739 SF

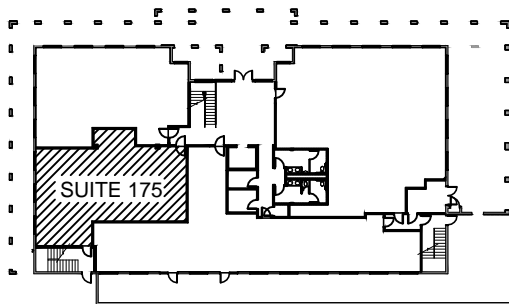
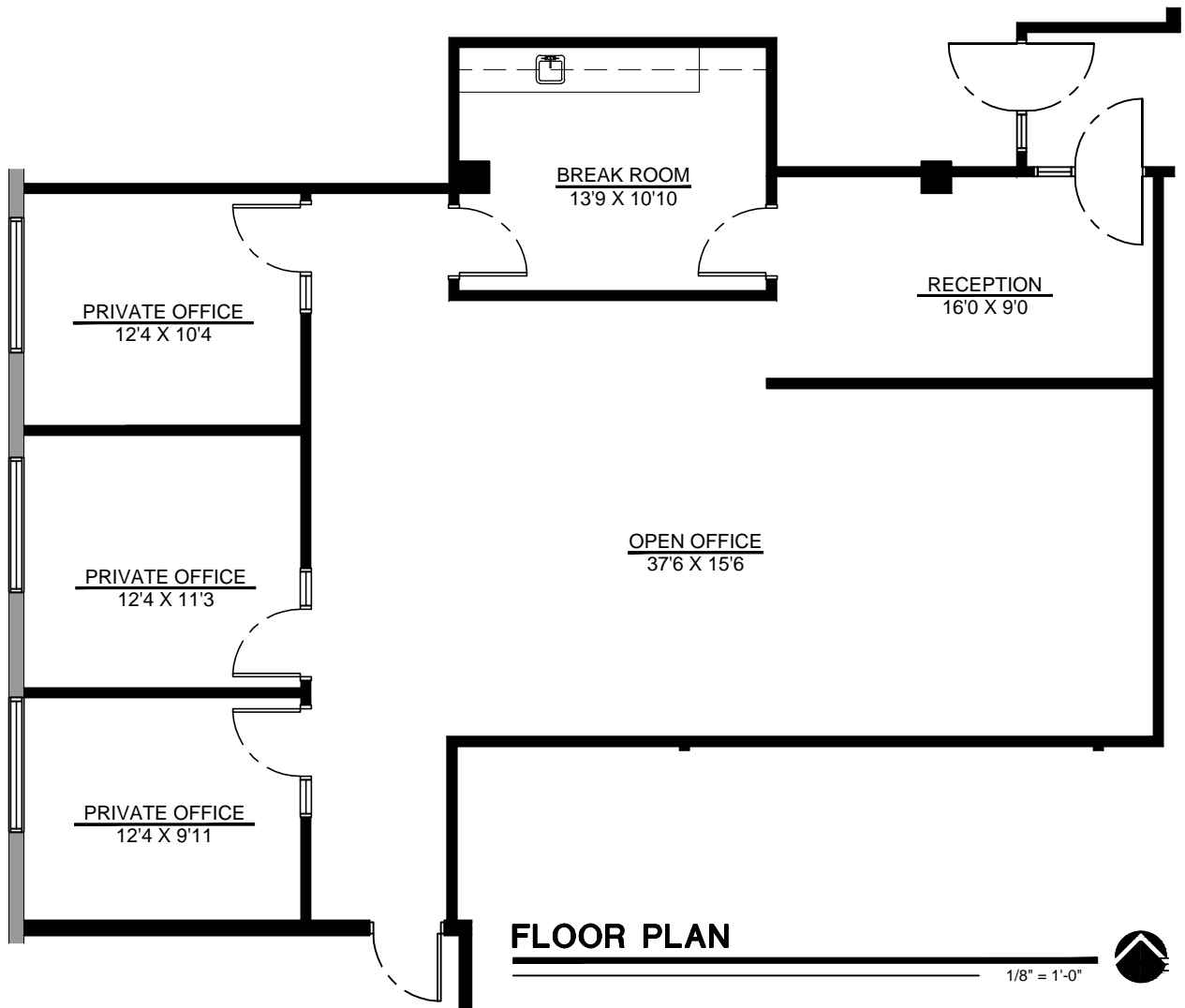


2555 E. Camelback Rd, Suite 400 | Phoenix, Arizona 85016  
 ph: +1 602 954 9000 | fx: +1 602 253 0528 | cushmanwakefield.com

Exclusive Advisor

**JOE VALE**

+1 602 229 5856 | joe.vale@cushwake.com



Exclusive Advisor

**JOE VALE**

2555 E. Camelback Rd, Suite 400 | Phoenix, Arizona 85016  
 ph: +1 602 954 9000 | fx: +1 602 253 0528 | [cushmanwakefield.com](http://cushmanwakefield.com)

+1 602 229 5856 | [joe.vale@cushwake.com](mailto:joe.vale@cushwake.com)

©2019 Cushman & Wakefield. All rights reserved. The information contained in this communication is strictly confidential. This information has been obtained from sources believed to be reliable but has not been verified. No warranty or representation, express or implied, is made as to the condition of the property (or properties) referenced herein or as to the accuracy or completeness of the information contained herein, and same is submitted subject to errors, omissions, change of price, rental or other conditions, withdrawal without notice, and to any special listing conditions imposed by the property owner(s). Any projections, opinions or estimates are subject to uncertainty and do not signify current or future property performance.