

530 Discovery Drive - HUNTSVILLE, AL

OFFICE SPACE FOR LEASE WITH SCIF



PROPERTY HIGHLIGHTS

- Includes a SCIF separated into three rooms as shown on the floorplan.
- Property has two large conference rooms as well as two smaller meeting rooms near the lobbies.
- Two break rooms and outdoor picnic area.
- Elevators to second floor located near lobby.
- Plenty of parking at front and back of property in newly striped lot.
- Site is easily accessible from Highway 72, I-565, and Research Park Blvd.
- Located with Cummings Research Park, home to more than 300 companies made from a mixture of technology, defense agencies, business incubators, and Fortune 500 companies.

ABOUT THE PROPERTY

530 Discovery Drive is a two-story, Class-A office property located within Cummings Research Park, the second-largest research park in the country. The site includes two buildings connected by a breezeway with individual lobbies, private offices, and conference rooms.

LOCATION

530 Discovery Drive NW
Huntsville, AL 35806

SPACE AVAILABLE - CAN BE DIVIDED

47,733 SF - Available 1/1/24

PRICE

Call for pricing information.

FOR MORE INFORMATION CALL

Eric St. John, CCIM
256-384-7603
eric@crunkletonassociates.com

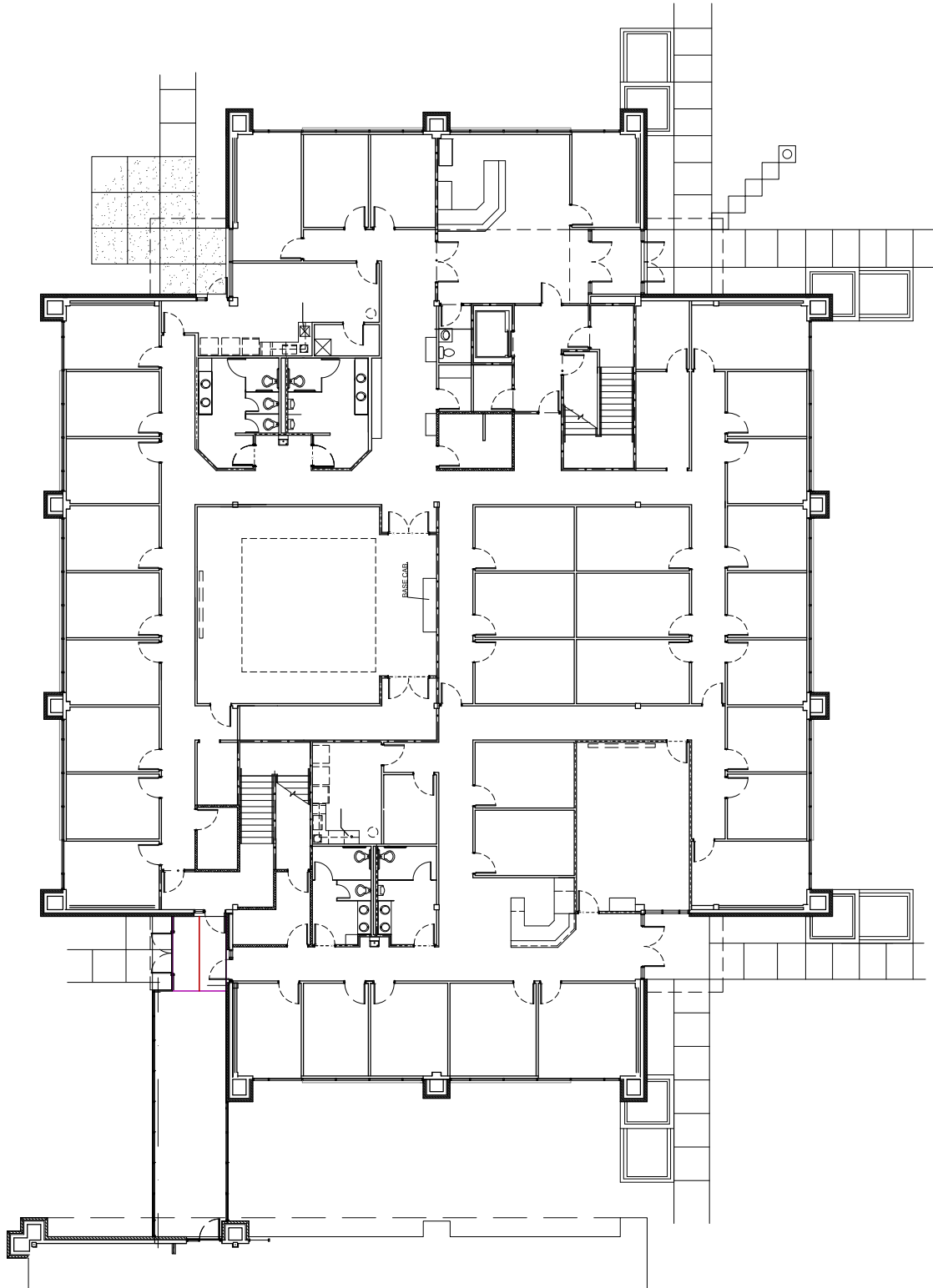


CRUNKLETON
COMMERCIAL REAL ESTATE GROUP

MAP SHOWING PROPERTY LOCATION

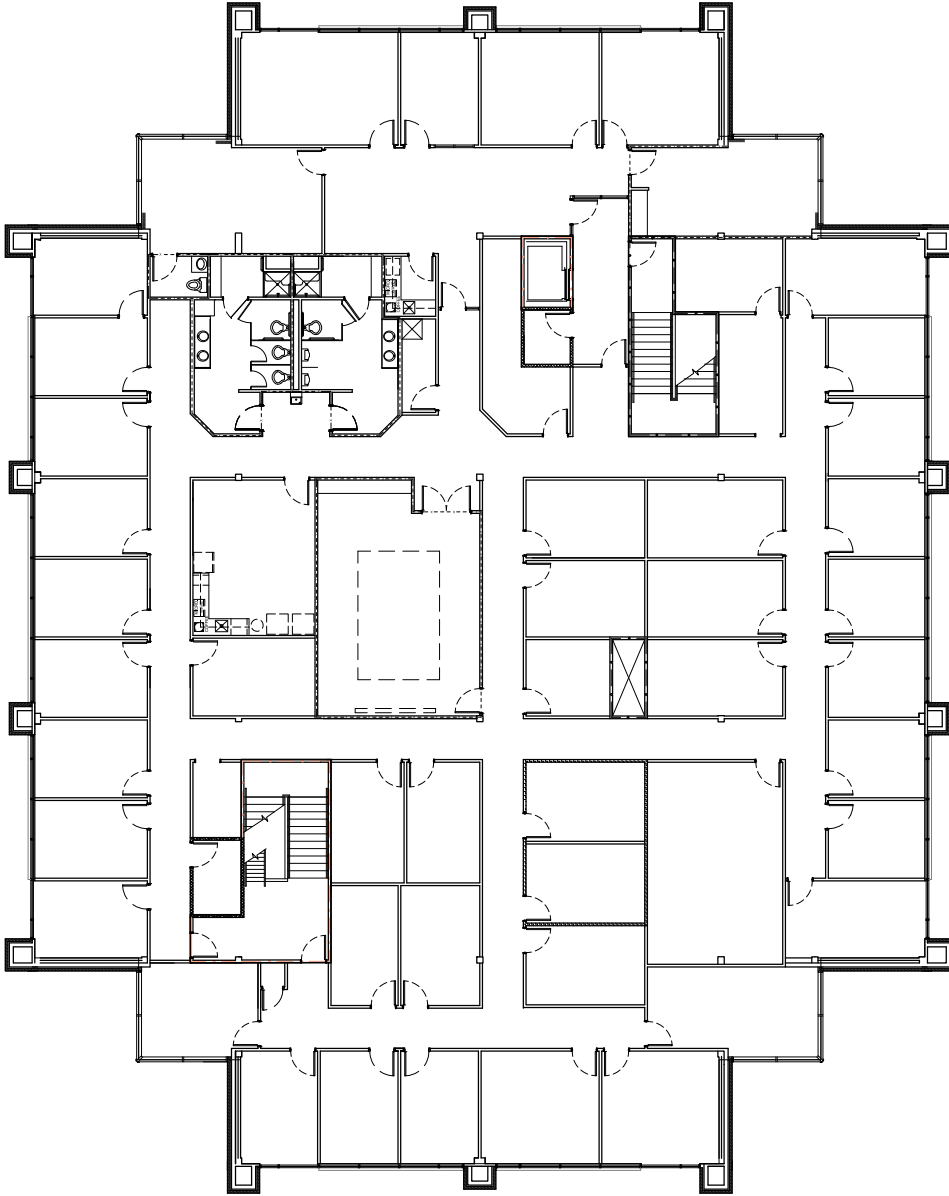


FLOOR PLAN - BUILDING ONE - FIRST FLOOR



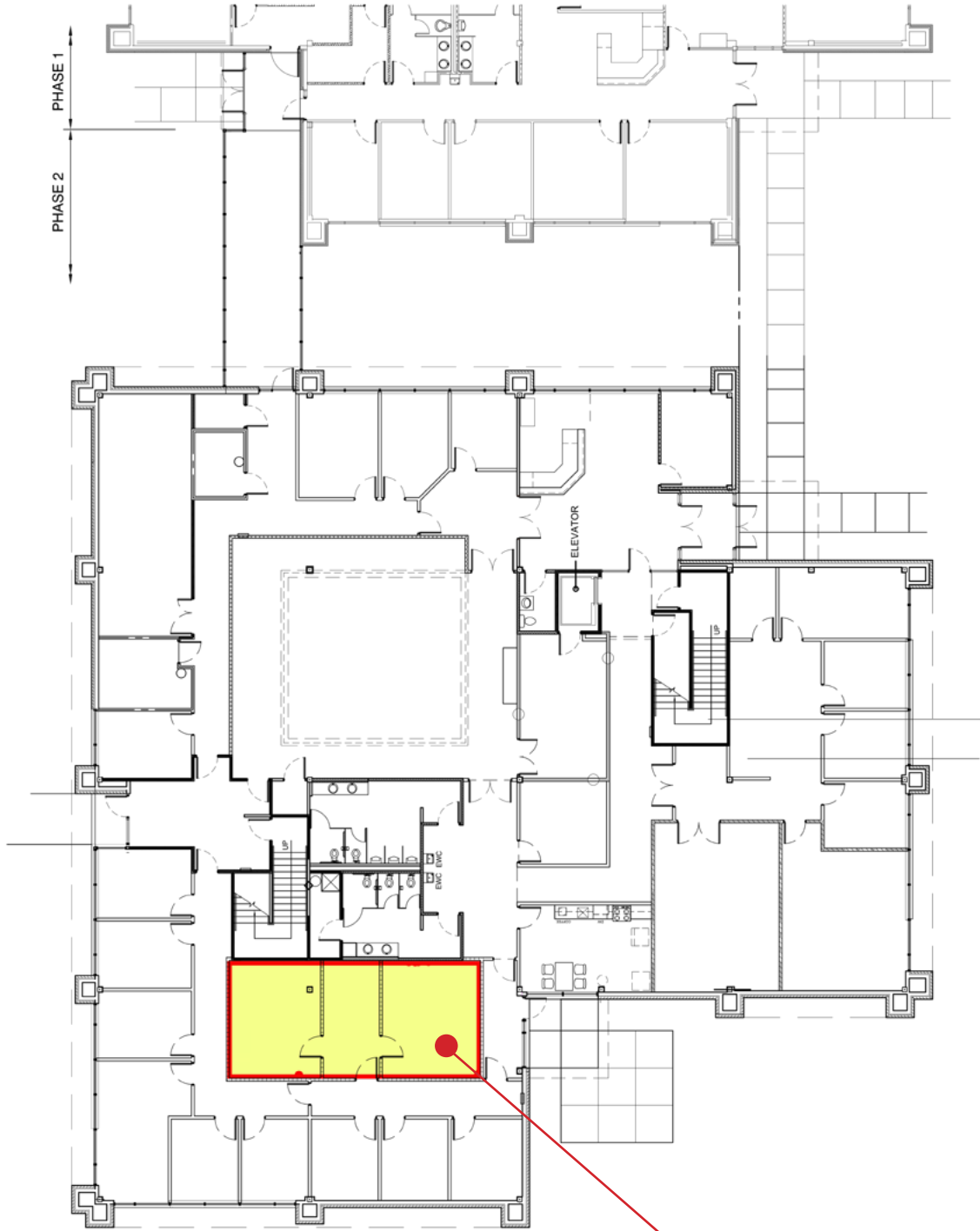
FIRST FLOOR PLAN - PHASE 1
10/18/2017

FLOOR PLAN - BUILDING ONE - SECOND FLOOR



SECOND FLOOR PLAN - PHASE 1
100-100

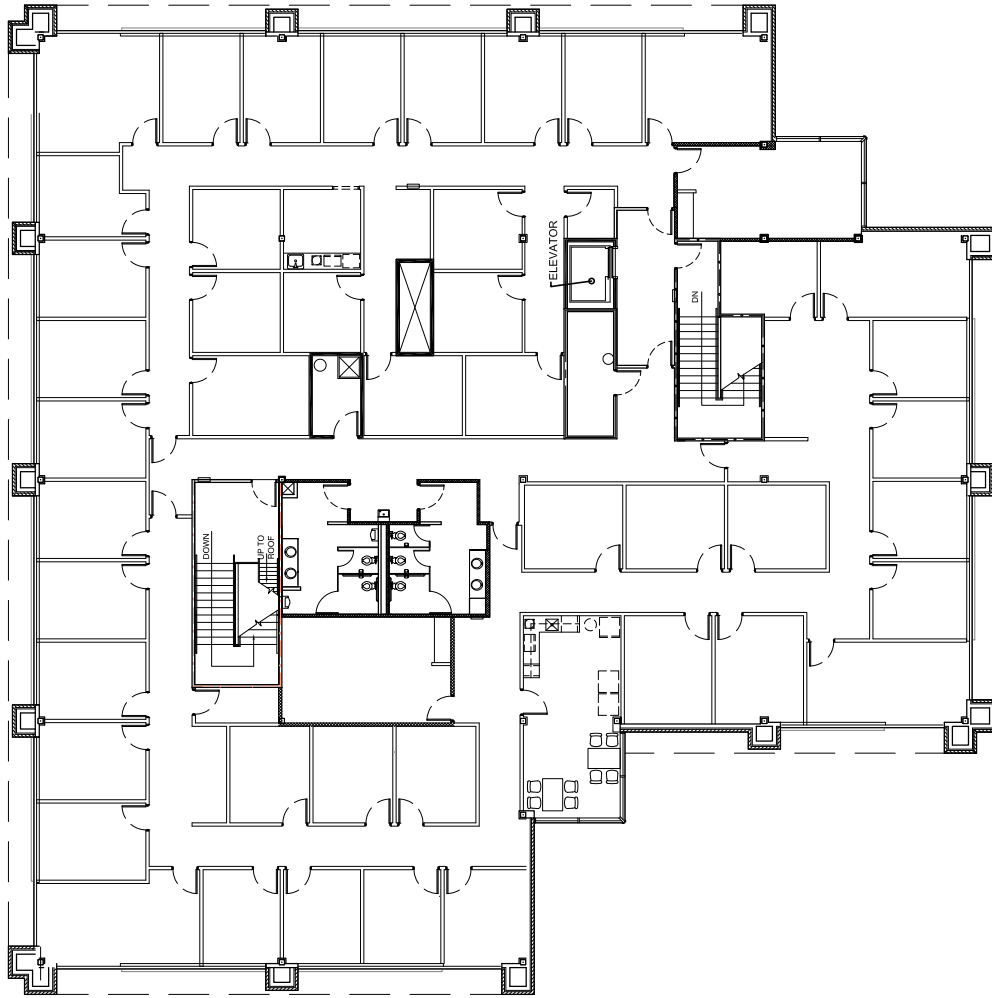
FLOOR PLAN - BUILDING TWO - FIRST FLOOR



FIRST FLOOR PLAN - PHASE 2

SCIF

FLOOR PLAN - BUILDING TWO - SECOND FLOOR



SECOND FLOOR PLAN - PHASE 2
10/2/19