

## 25 Funston Road

Kansas City, Kansas

For more information:

**Nathan Anderson, SIOR, CCIM**

+1 913 890 2001

nathan@nai-heartland.com

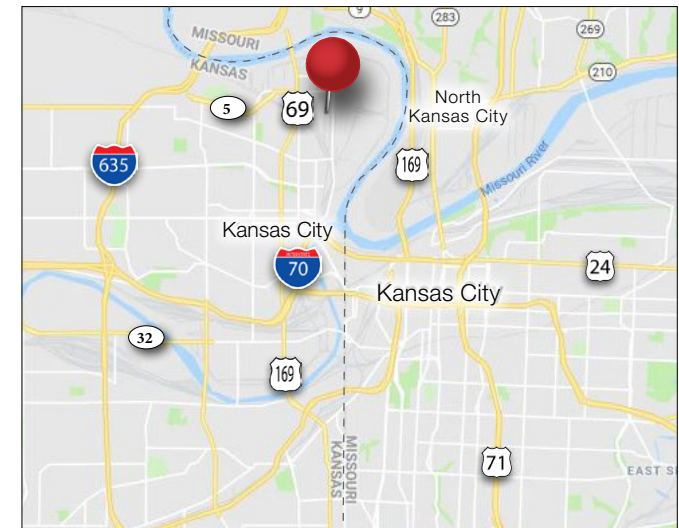
**Joe O'Neill**

+1 913 890 2010

joe@nai-heartland.com

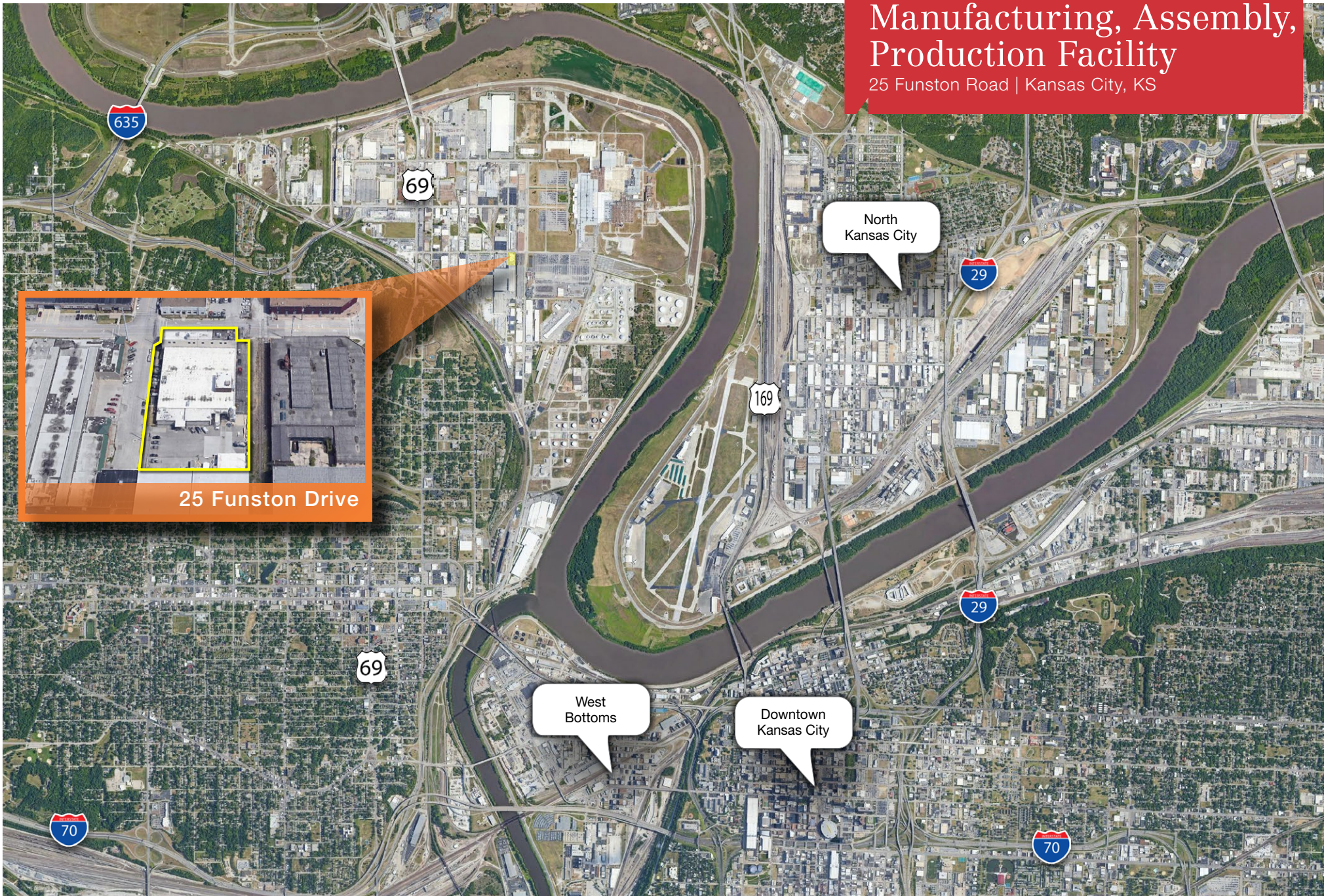
### Property Features

- ±43,582 SF on 1.81 Acres
- Renovated office areas
- M-3 industrial zoning
- Located in the Fairfax Industrial Park
- Dock-high and drive-in loading
- Fenced yard area with shed
- Est. 800-amp, 480-volt power
- Sale Price: \$1,295,000



# Manufacturing, Assembly, Production Facility

25 Funston Road | Kansas City, KS



25 Funston Drive

North  
Kansas City

West  
Bottoms

Downtown  
Kansas City

Contact for more information:

**Nathan Anderson, SIOR, CCIM**

+1 913 890 2001

nathan@nai-heartland.com

**Joe O'Neill**

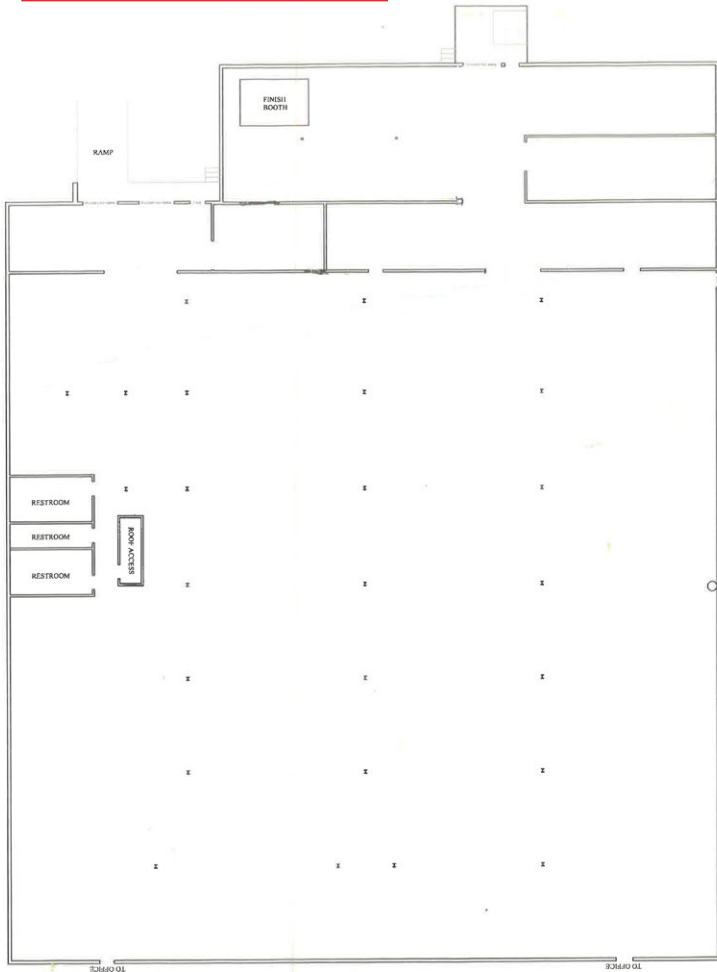
+1 913 890 2010

joe@nai-heartland.com

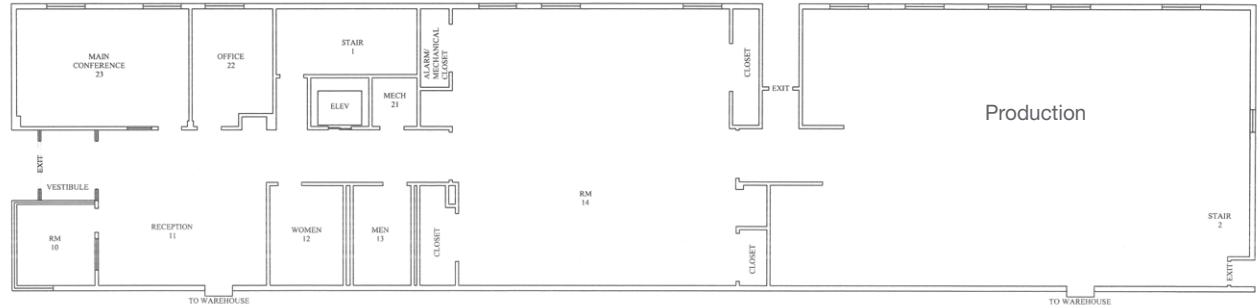
# Manufacturing, Assembly, Production Facility

25 Funston Road | Kansas City, KS

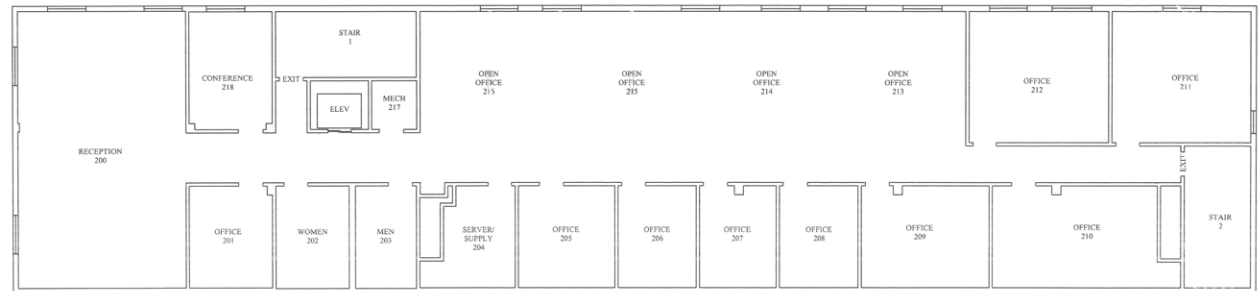
## Warehouse



## First Floor



## Second Floor



Contact for more information:

**Nathan Anderson, SIOR, CCIM**  
+1 913 890 2001  
nathan@nai-heartland.com

**Joe O'Neill**  
+1 913 890 2010  
joe@nai-heartland.com

# Manufacturing, Assembly, Production Facility

25 Funston Road | Kansas City, KS

