

LOCATION

Building 7
12239 NE Marx Street
Portland OR 97230

TOTAL SQ.FT. OFFICE SQ.FT.

10,092 sq.ft.
1,541 sq.ft.

DOCK HIGH DOORS DRIVE IN DOORS CLEAR HEIGHT

7
1
14-18'

FEATURES

End Cap Space
4 miles to PDX Airport
10 miles to Downtown
Immediate access to I-205

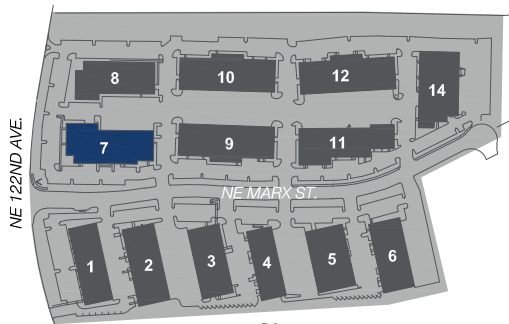
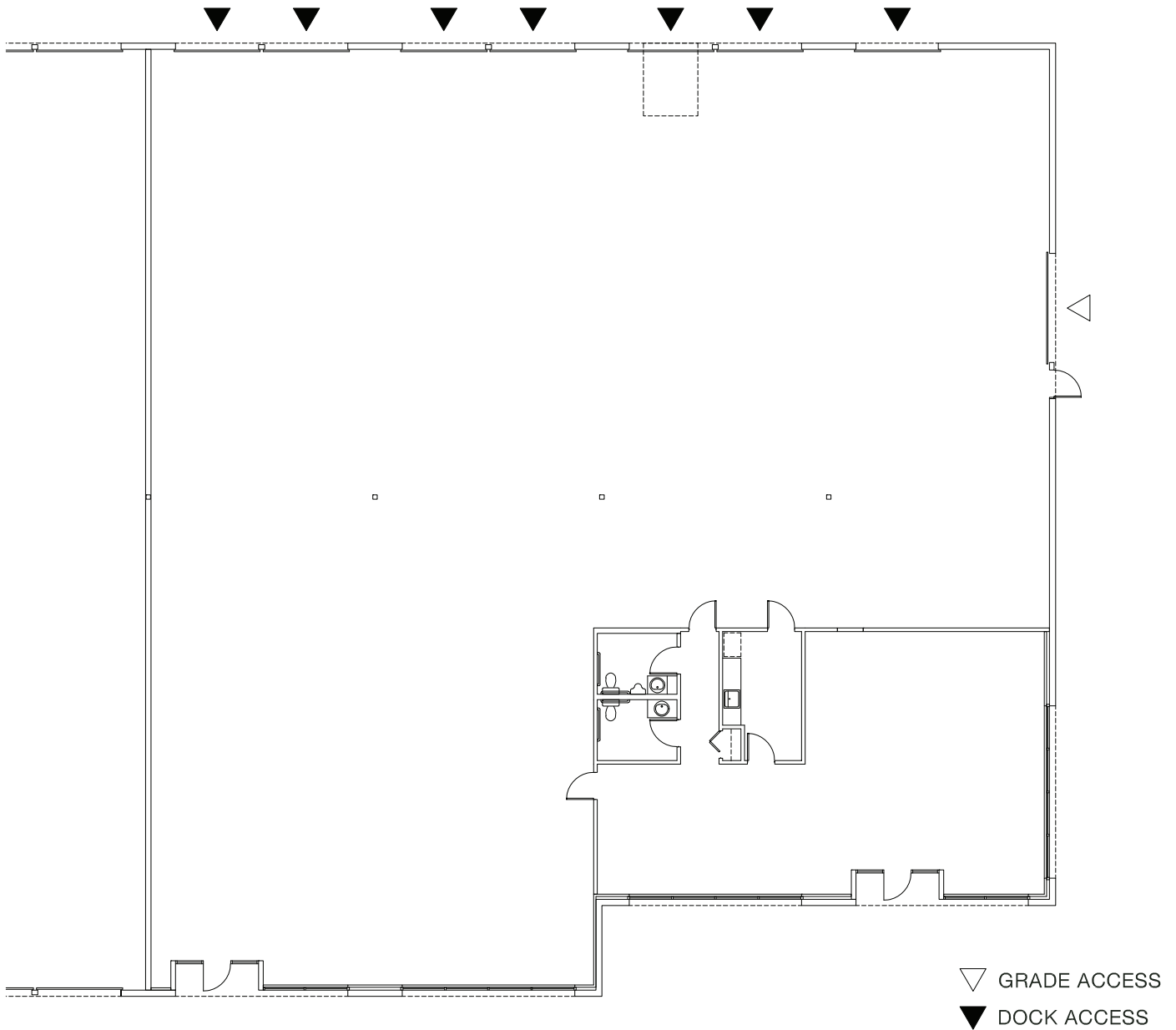
RATE

\$.60/sq.ft. - Shell
\$.90/sq.ft. - Office
NNN

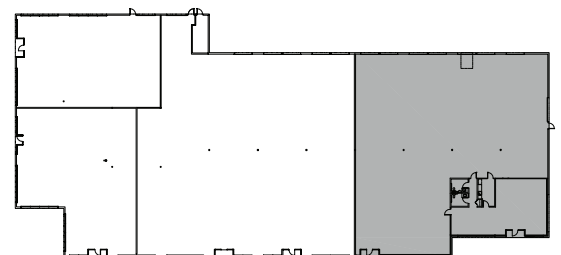
LEASING CONTACT

Jake Bigby
jakeb@pactrust.com
360-737-6300





PACIFIC BUSINESS PARK
Portland, OR 97230



BUILDING PLAN

15350 SW Sequoia Pkwy Suite 300 Portland OR 97224 • 503.624.6300 • pactrust.com

The square footage and rates quoted herein are subject to change. Square footage and rates are finalized with a signed lease agreement.

