

BAYSIDE TECHNOLOGY PARK

46610 Landing Parkway, Fremont, CA



FOR LEASE
±15,839 SF R&D / Office Space



- Located in prestigious Bayside Technology Park
- Next door to Club Sport and hotel services
- Great Access to I-880
- Extensive glassline
- Flexible renovated office/lab/warehouse space
- LED lighting
- Parking 4/1,000
- Lunch room
- Server room
- ±83 tons HVAC
- Heavy power
- 15'-18' ft clear height
- Grade level loading
- Call to tour

CBRE

**Newmark
Knight Frank**

Chris Shaffer 408.982.8451 cshaffer@ngkf.com Lic #00902221
Craig Bevan 510.874.1993 craig.bevan@cbre.com Lic #00922824

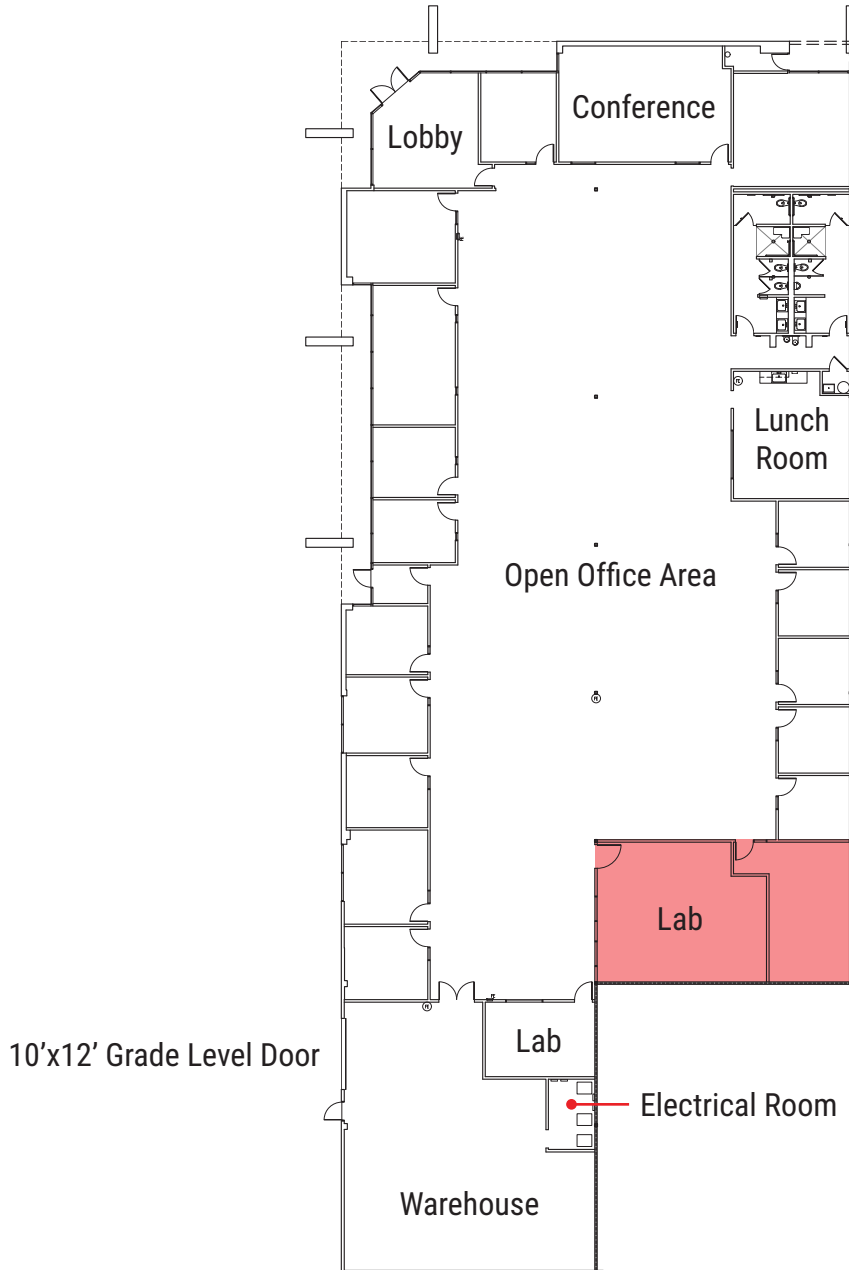
3055 Olin Ave, Suite 2200, San Jose, CA 95128

www.ngkf.com

BAYSIDE TECHNOLOGY PARK

46610 Landing Parkway, Fremont, CA

FLOORPLAN



CBRE

**Newmark
Knight Frank**

Chris Shaffer 408.982.8451 cshaffer@ngkf.com Lic #00902221
Craig Bevan 510.874.1993 craig.bevan@cbre.com Lic #00922824

3055 Olin Ave, Suite 2200, San Jose, CA 95128

www.ngkf.com

BAYSIDE TECHNOLOGY PARK

46610 Landing Parkway, Fremont, CA

AMENITIES MAP



CBRE

Newmark Knight Frank

Chris Shaffer 408.982.8451 cshaffer@ngkf.com Lic #00902221
 Craig Bevan 510.874.1993 craig.bevan@cbre.com Lic #00922824

3055 Olin Ave, Suite 2200, San Jose, CA 95128

www.ngkf.com

BAYSIDE TECHNOLOGY PARK

46610 Landing Parkway, Fremont, CA

TENANT MAP



CBRE

 **Newmark
Knight Frank**

Chris Shaffer 408.982.8451 cshaffer@ngkf.com Lic #00902221
Craig Bevan 510.874.1993 craig.bevan@cbre.com Lic #00922824

3055 Olin Ave, Suite 2200, San Jose, CA 95128

www.ngkf.com