

## Jackson Hall Medical Building

314 Martin Luther King Jr. Way  
Tacoma, WA

Connected to Tacoma General  
Hospital by underground walk-  
way

Medical build-out/ready-to-go

Ample covered parking

Availabilities:

Suite 9	887 RSF
Suite 210	1,081 RSF
Suite 400	3,062 RSF

\$25.00 per square foot, per year,  
full service



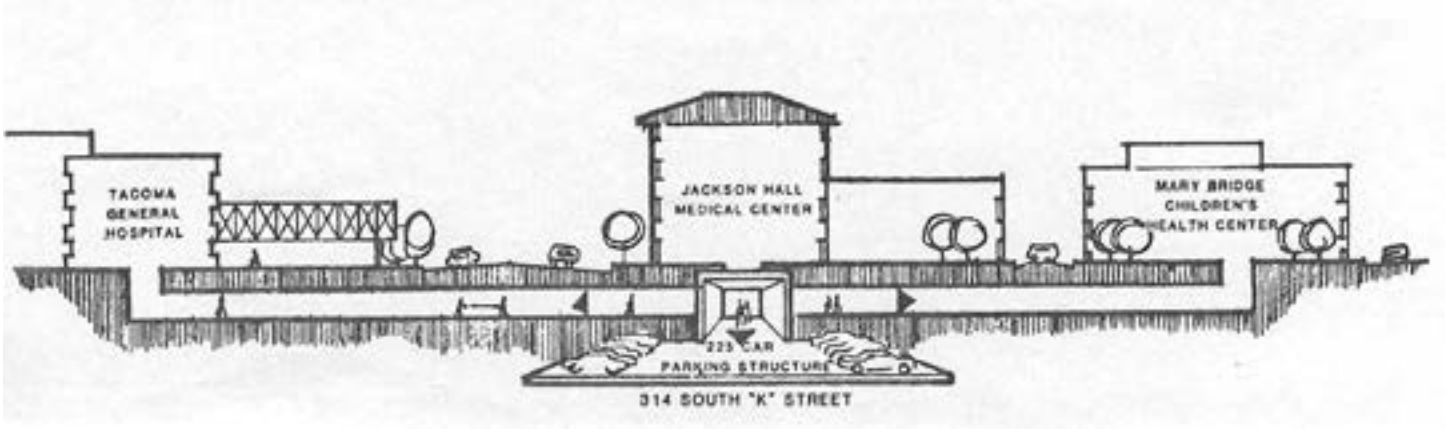
### Location



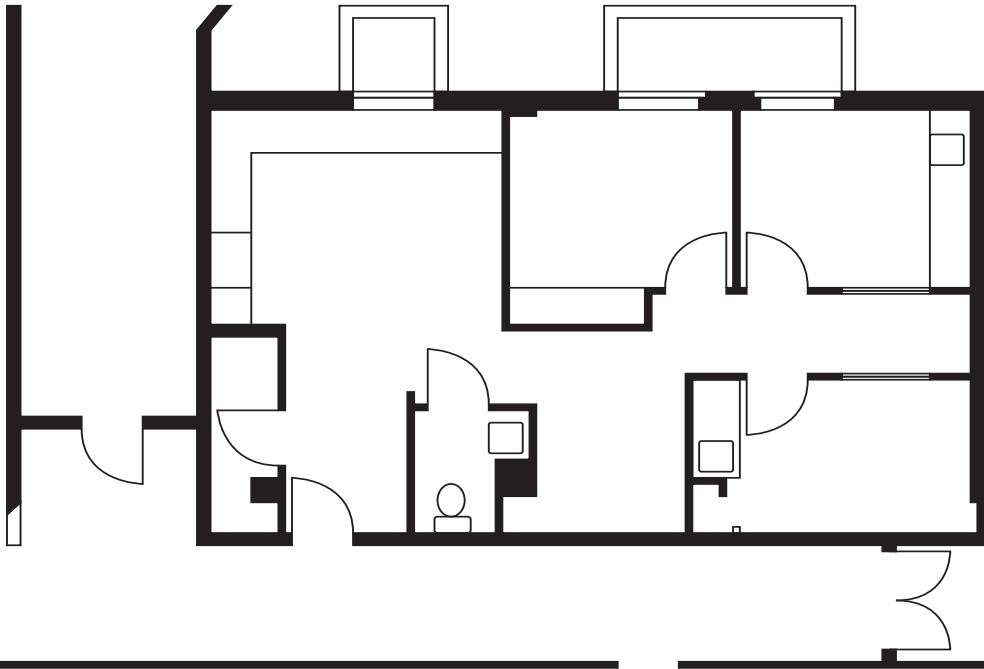
### Contact

**Bill Frame**  
253.722.1403  
bframe@kiddermathews.com

## Jackson Hall Medical Building



### UNDERGROUND CONNECTIONS TO ADJACENT FACILITIES



**SUITE 9 - 887 RSF**

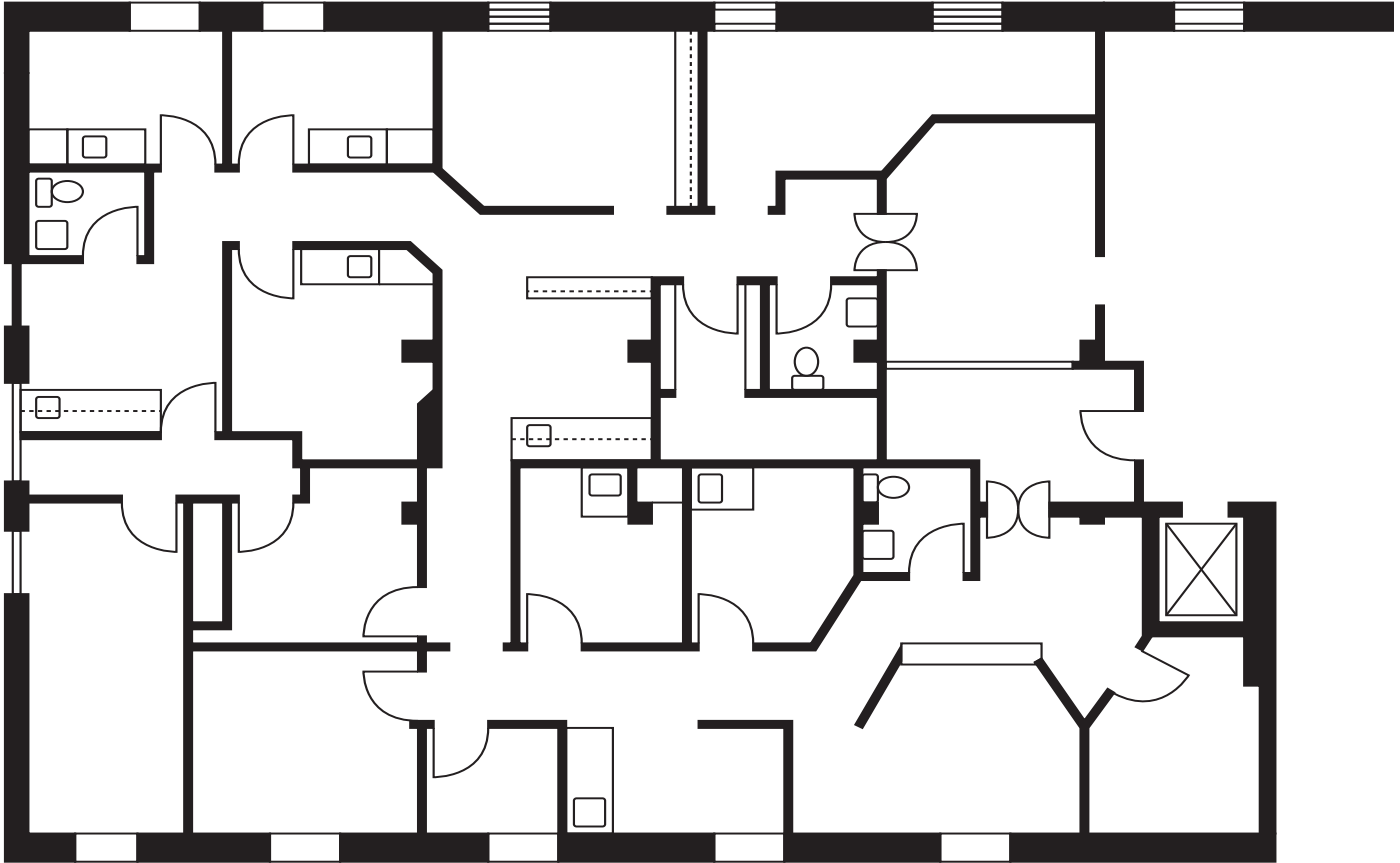
### Contact

**Bill Frame**

253.722.1403

bframe@kiddermathews.com

## Jackson Hall Medical Building



**SUITE 400 - 3,062 RSF**

### Contact

**Bill Frame**

253.722.1403

bframe@kiddermathews.com