



# KENT EAST HILL SHOPPING CENTER

5,973 SF -1,100 SF AVAILABLE!



## retail space

104TH AVENUE SE AND SE 256TH STREET  
KENT, WA 98031

PRESENTED BY

**KEVIN KOOYMAN**  
425.455.0500

kevink@jshproperties.com | www.jshproperties.com

AVAILABLE SQUARE FEET: SEE ATTACHED SITE PLAN

LEASE RATE: SEE ATTACHED SITE PLAN

TRIPLE NET EXPENSES: APPROXIMATELY \$5.60 PER SQUARE FOOT

TRAFFIC COUNTS: OVER 79,400 CARS PER DAY

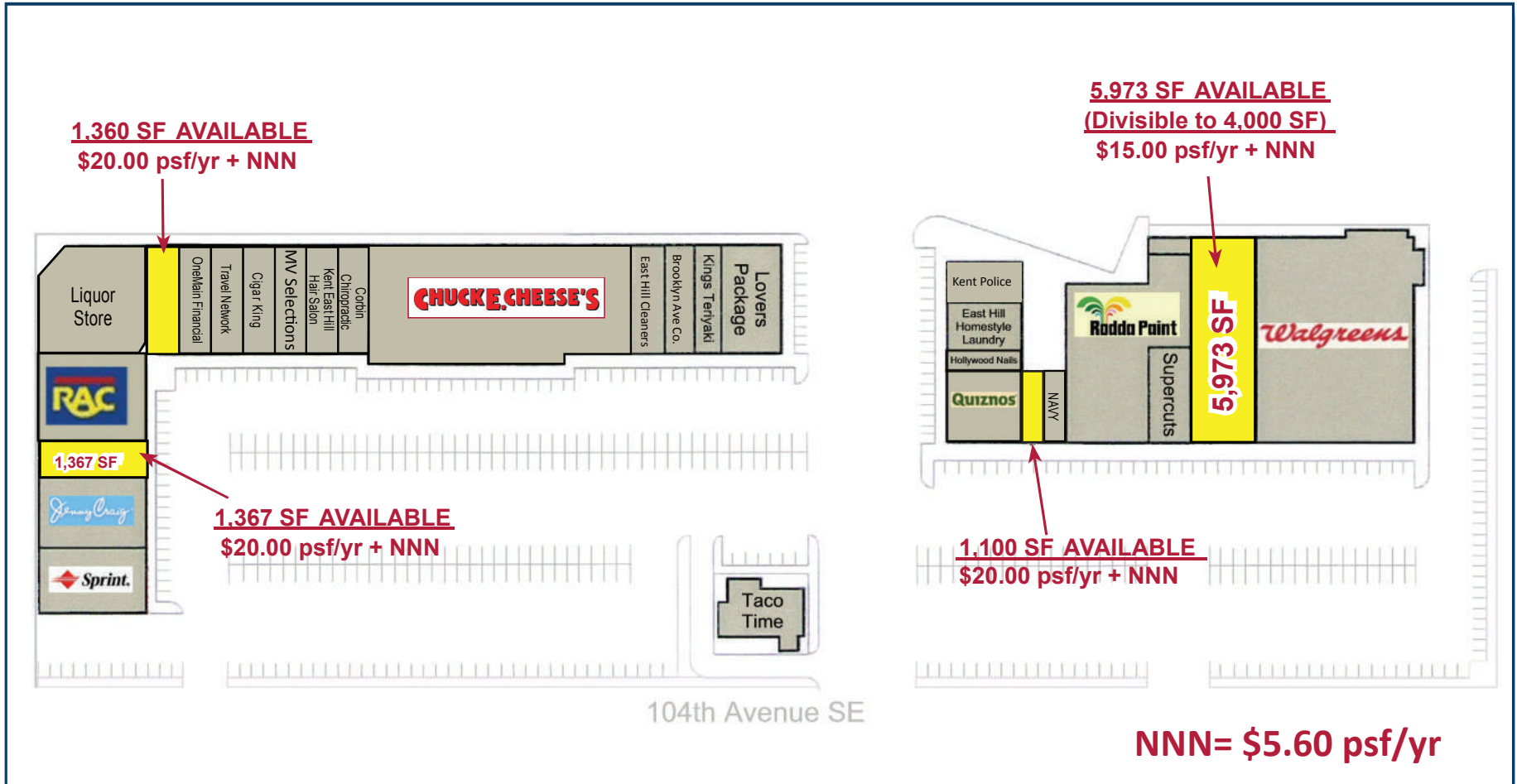
PROFILE: VERY STRONG REGIONAL/NEIGHBORHOOD CENTER WITH EXCELLENT VISIBILITY AND ACCESS.

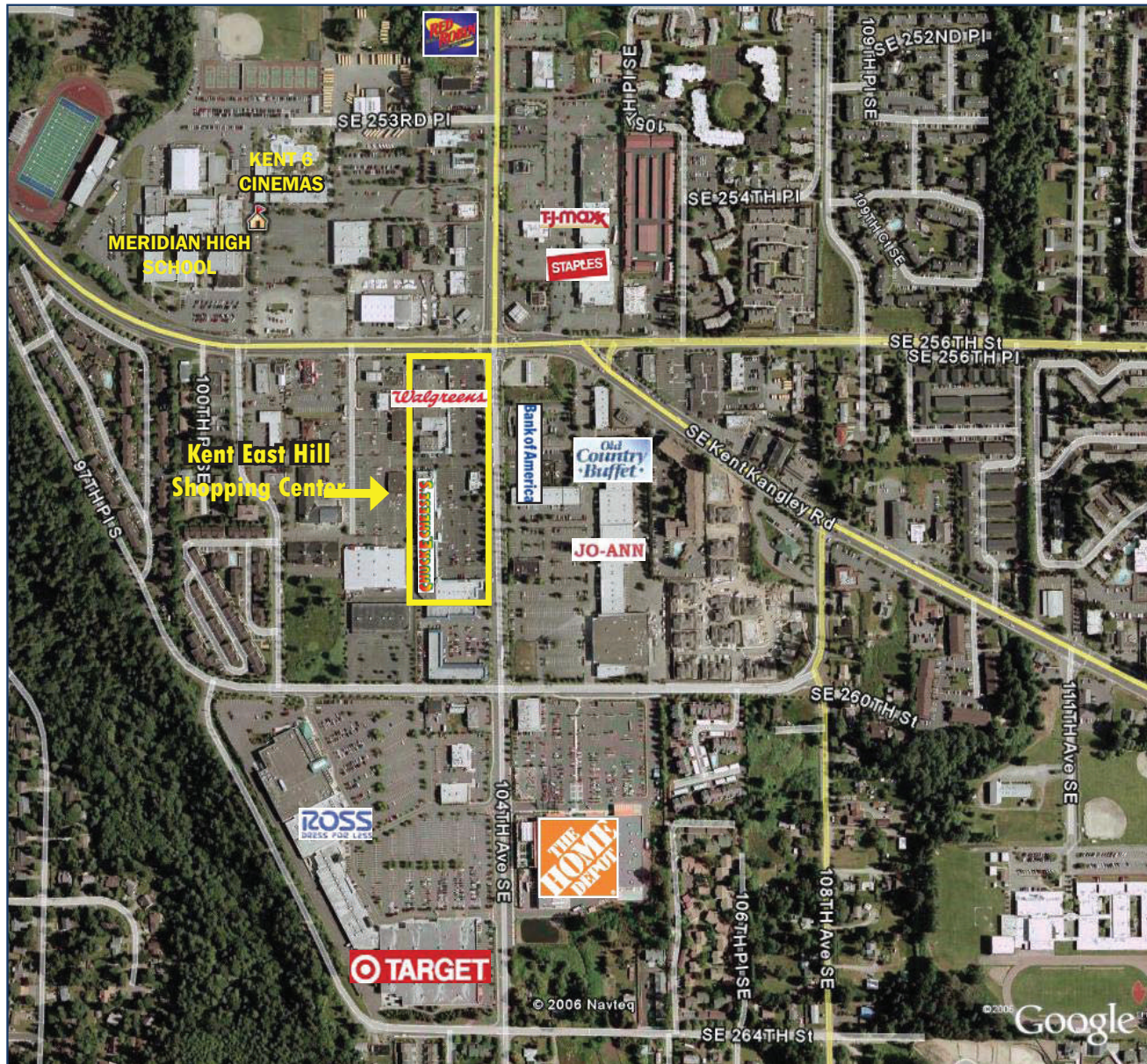
ADDITIONAL TENANTS IN MARKET INCLUDE: TARGET, HOME DEPOT, TJ MAXX, TOP FOODS, ROSS DRESS FOR LESS AND STAPLES.

### DEMOGRAPHICS

	1 MILE	3 MILE	5 MILE
POPULATION	19,661	98,396	221,317
AVERAGE INCOME	\$60,530	\$71,844	\$75,272







| AERIAL AND MAP

