

2.45 ACRES FOR SALE OR LEASE

N. LAKESHORE DR., SHREVEPORT, LA 71107



PROPERTY HIGHLIGHTS

- Wooded residential lot with a lot of privacy
- Perfect for a residential development on Cross Lake
- 2.45 waterfront acres with direct access to Cross Lake
- 5.42 miles from I-220
- Zoned R-1D
- Sale Price: \$153,125
- Lease Price: Negotiable



For More Information, Contact:

Elizabeth Comegys

O: 318.212.1663

C: 318.393.7492

ecomegys@vintagerealty.com

Claire Childs

O: 318.212.1671

C: 318.458.5851

cchilds@vintagerealty.com

Trent Siskron

O: 318.212.1628

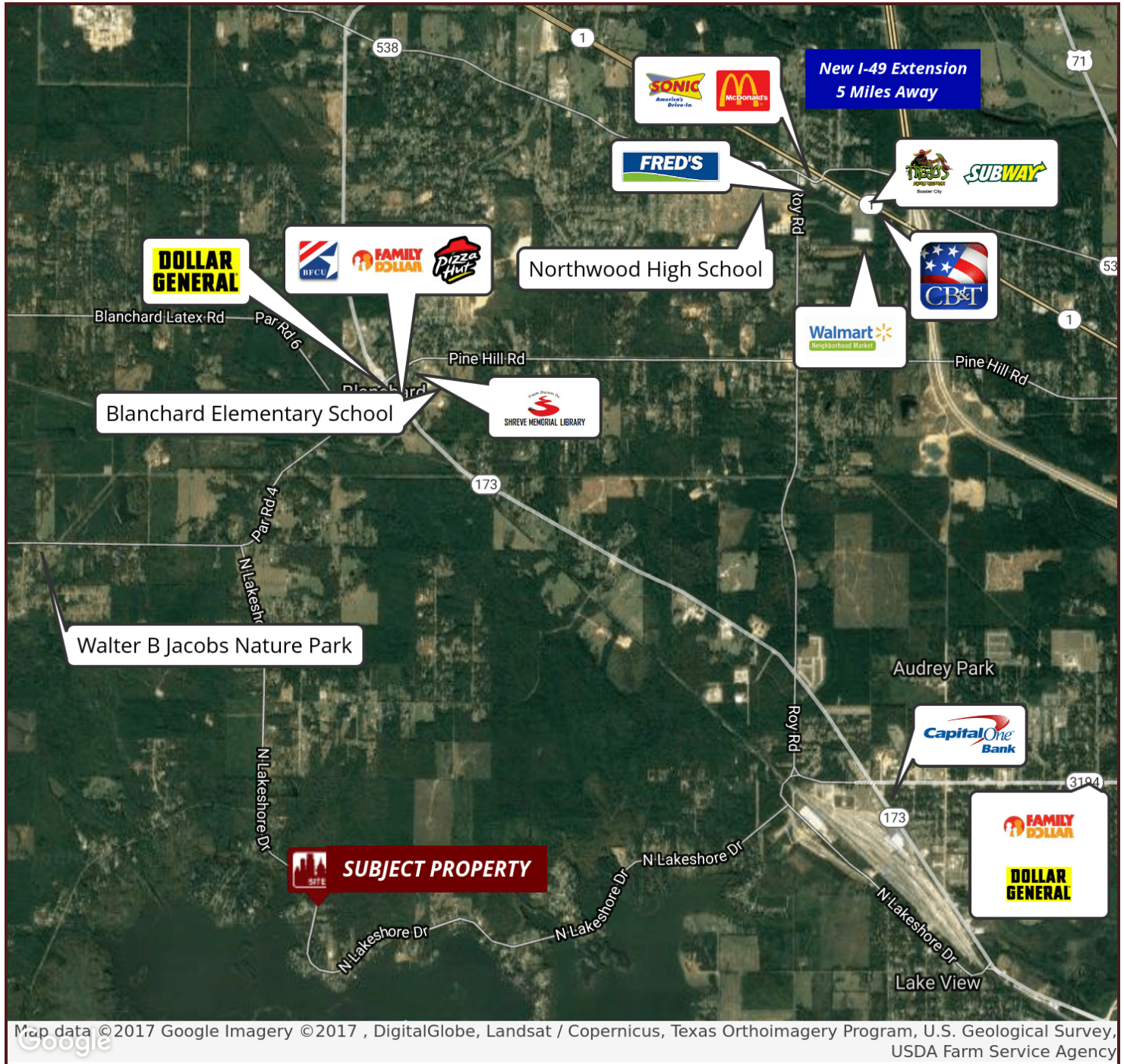
tsiskron@vintagerealty.com

All Information Contained Herein Is Believed To Be Accurate, But Is Not Warranted And No Liability Of Errors Or Omissions Is Assured By Either The Property Owner Or Vintage Realty Company Or Its Agents And Employees. Prices As Stated Herein And Product Availability Is Subject To Change And/Or Sale Or Lease Without Prior Notice, And All Sizes And Dimensions Are Subject To Correction.
Rev 05/2017


VINTAGE
REALTY COMPANY
318.222.2244

2.45 ACRES FOR SALE OR LEASE

N. LAKESHORE DR., SHREVEPORT, LA 71107



For More Information, Contact:

Elizabeth Comegys

O: 318.212.1663

C: 318.393.7492

ecomegys@vintagerealty.com

Claire Childs

O: 318.212.1671

C: 318.458.5851

cchilds@vintagerealty.com

Trent Siskron

O: 318.212.1628

tsiskron@vintagerealty.com

All Information Contained Herein Is Believed To Be Accurate, But Is Not Warranted And No Liability Of Errors Or Omissions Is Assured By Either The Property Owner Or Vintage Realty Company Or Its Agents And Employees. Prices As Stated Herein And Product Availability Is Subject To Change And/Or Sale Or Lease Without Prior Notice, And All Sizes And Dimensions Are Subject To Correction.
Rev 05/2017

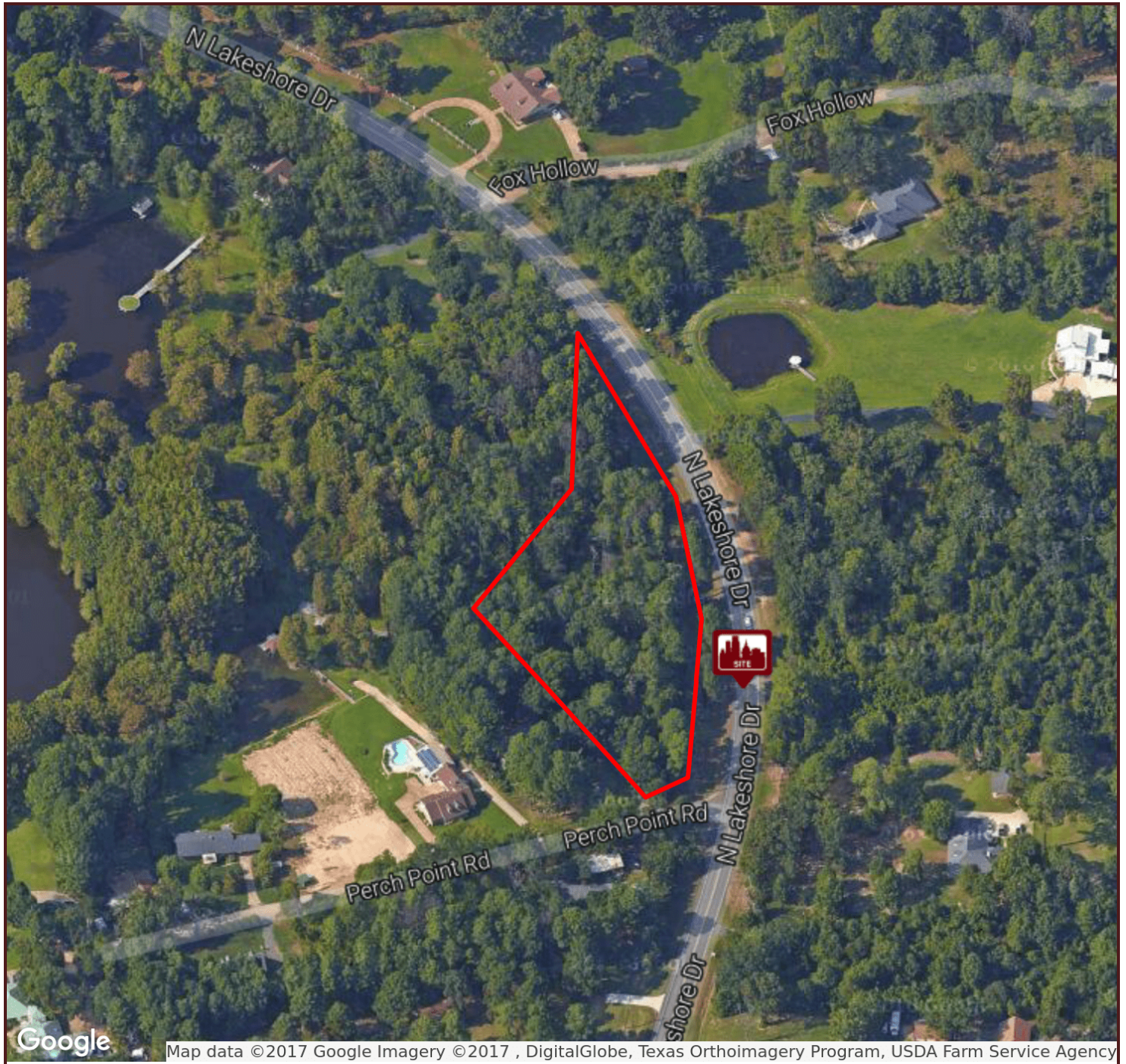


REALTY COMPANY

318.222.2244

2.45 ACRES FOR SALE OR LEASE

N. LAKESHORE DR., SHREVEPORT, LA 71107



For More Information, Contact:

Elizabeth Comegys

O: 318.212.1663

C: 318.393.7492

ecomegys@vintagerealty.com

Claire Childs

O: 318.212.1671

C: 318.458.5851

cchilds@vintagerealty.com

Trent Siskron

O: 318.212.1628

tsiskron@vintagerealty.com

All Information Contained Herein Is Believed To Be Accurate, But Is Not Warranted And No Liability Of Errors Or Omissions Is Assured By Either The Property Owner Or Vintage Realty Company Or Its Agents And Employees. Prices As Stated Herein And Product Availability Is Subject To Change And/Or Sale Or Lease Without Prior Notice, And All Sizes And Dimensions Are Subject To Correction.
Rev 05/2017

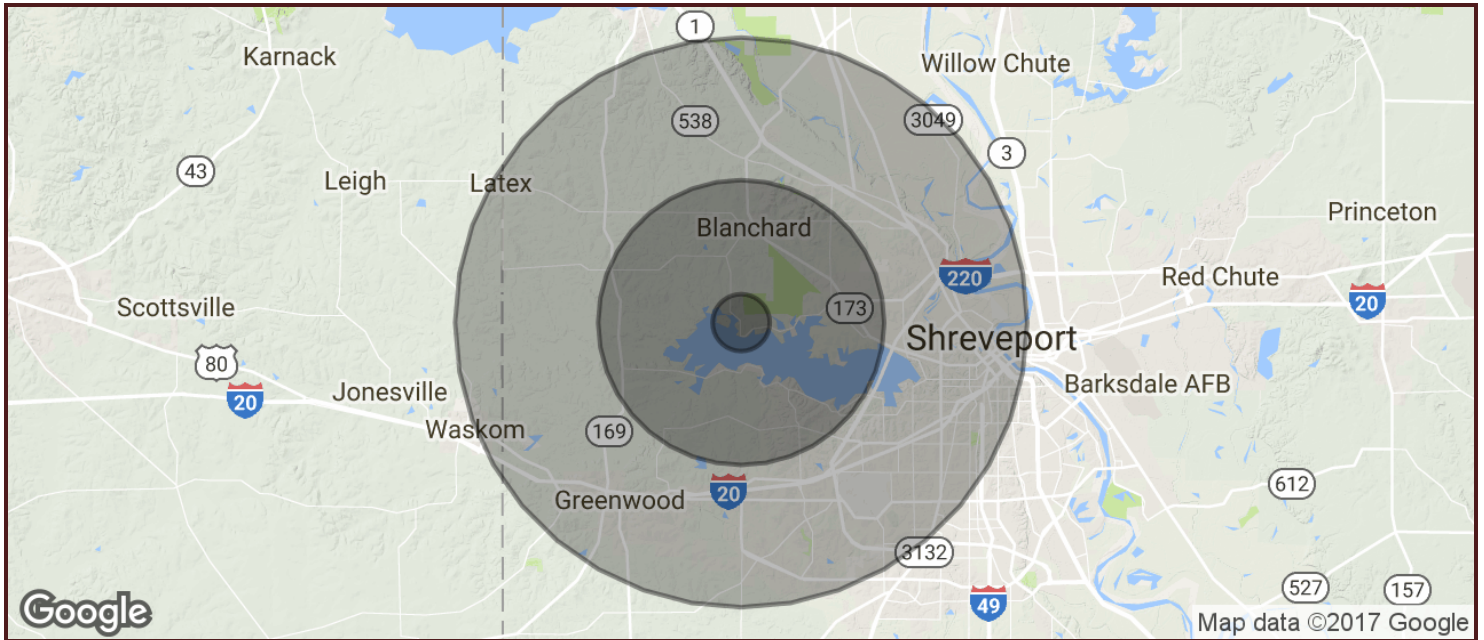


REALTY COMPANY

318.222.2244

2.45 ACRES FOR SALE OR LEASE

N. LAKESHORE DR., SHREVEPORT, LA 71107



POPULATION	1 MILE	5 MILES	10 MILES
TOTAL POPULATION	412	16,070	119,491
MEDIAN AGE	43.5	38.9	34.9
MEDIAN AGE (MALE)	44.8	38.5	33.1
MEDIAN AGE (FEMALE)	41.6	39.4	36.5
HOUSEHOLDS & INCOME	1 MILE	5 MILES	10 MILES
TOTAL HOUSEHOLDS	168	6,293	44,713
# OF PERSONS PER HH	2.5	2.6	2.7
AVERAGE HH INCOME	\$78,938	\$62,026	\$47,399
AVERAGE HOUSE VALUE	\$182,745	\$182,101	\$134,971

* Demographic data derived from 2010 US Census

For More Information, Contact:

Elizabeth Comegys

O: 318.212.1663

C: 318.393.7492

ecomegys@vintagerealty.com

Claire Childs

O: 318.212.1671

C: 318.458.5851

cchilds@vintagerealty.com

Trent Siskron

O: 318.212.1628

tsiskron@vintagerealty.com

All Information Contained Herein Is Believed To Be Accurate, But Is Not Warranted And No Liability Of Errors Or Omissions Is Assured By Either The Property Owner Or Vintage Realty Company Or Its Agents And Employees. Prices As Stated Herein And Product Availability Is Subject To Change And/Or Sale Or Lease Without Prior Notice, And All Sizes And Dimensions Are Subject To Correction.
Rev 05/2017



REALTY COMPANY

318.222.2244