



LAND For Sale

Location: South Hill Road
Side of Street: East
City: Lyon Twp., MI
Park Name: South Hill Business Park
Cross Streets: Grand River Ave.
County: Oakland

Acreage:	2.93 - 38.06	Improvements:	N/A
Zoning:	I-1, I-2	Dimensions:	Irregular

UTILITIES

Sanitary Sewer:	Yes	Gas:	Yes
Storm Sewer:	Yes	Outside Storage:	Yes
Water:	Yes	Rail Siding:	No

ADJACENT LAND

North:	Industrial	East:	Research
South:	Office	West:	Industrial

PRICING INFORMATION

Asking Price:	...	Parcel #:	See Comments
Per Acre:	\$288,000.00	Assessor Number:	N/A
Per SqFt :	\$6.60	Taxes:	

TRAFFIC INFORMATION

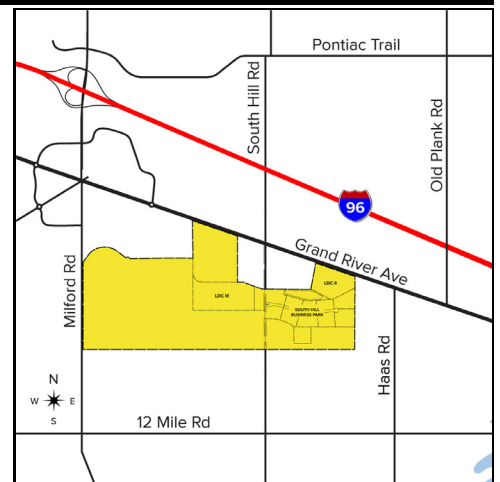
Yr: 2022	Count: 98,806	I-96 W. of Milford Rd.
Yr: 2022	Count: 100,167	I-96 E. of Milford Rd.
Yr: 2022	Count: 10,197	Grand River Ave. W of S. Hill Rd.
Yr: 2022	Count: 11,778	Grand River Ave. E of S. Hill Rd.

DEMOGRAPHICS

	Population	Median HH Income
1 Mile Radius	986	\$142,816
3 Mile Radius	18,611	\$103,378
5 Mile Radius	73,870	\$68,092

Comments:

- Lots for sale from 2.93 - 38.06 acres
- Build-to-Suit opportunities for sale or lease
- Lots can be combined for larger acreage sizes
- Flexible zoning, ideal for a variety of uses
- Paved concrete roads and all public utilities at property line
- Minutes from Michigan's top hospitals
- Exceptional development opportunity in this fast growing community
- Parcel ID #'s: 21-11-151-001, 002, 003, 004, 005, 006, 007 & 008
- For more information visit <http://www.southhillbusinesspark.com>



Broker: SIGNATURE ASSOCIATES

Agent(s):

Steve Gordon, (248) 948-0101, sgordon@signatureassociates.com