

# FOR LEASE – LBA BUILDING

## 10015 & 10025 LAKEWOOD OFFICE/RETAIL



DANFORTH



10025 LAKEWOOD DR SW, LAKEWOOD, WA



10015 LAKEWOOD DR SW, LAKEWOOD, WA

### Property Information

**Total Property SF:** 8,209 SF Bldg / 41,171 SF Lot\*

**Available SF:** 1,600 SF – Divisible to 400 SF

**Lease Rate/Type:** \$14 - \$20 NNN

Perfect for professional services.

\*Per Pierce County Records

### Property Overview

Prime location in the heart of Lakewood. Fantastic exposure to Bridgeport Way SW and Lakewood Dr. SW. Next to busy IHOP and a block from major retail and office space. Plenty of parking and great access.

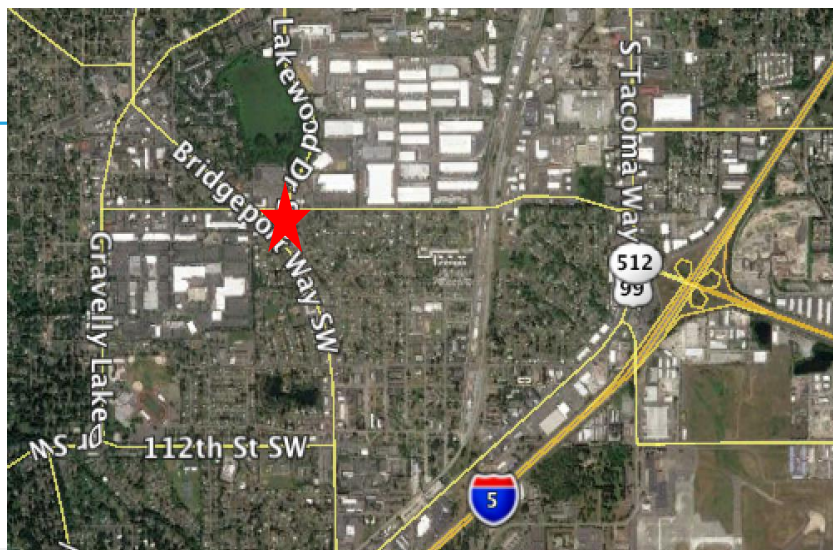
### Property Information

**Total Property SF:** 8,209 SF Bldg / 41,171 SF Lot\*

**Available SF:** 2,748 SF – Divisible to 1,350 SF

**Lease Rate/Type:** \$14 - \$20 NNN

Stand alone building. Building may be divided in two or three units.



FOR MORE DETAILS CONTACT:

**BYRON HILLER**

206-718-2715

Bhiller@cbcworldwide.com

**HUI SUK SO**

206-718-4600

Hso@cbcworldwide.com

**CBCWORLDWIDE.COM / CBCDANFORTH.COM**

©2017 Coldwell Banker Real Estate LLC, dba Coldwell Banker Commercial Affiliates. All Rights Reserved. Coldwell Banker Real Estate LLC, dba Coldwell Banker Commercial Affiliates fully supports the principles of the Equal Opportunity Act. Each Office is Independently Owned and Operated. Coldwell Banker Commercial and the Coldwell Banker Commercial Logo are registered service marks owned by Coldwell Banker Real Estate LLC, dba Coldwell Banker Commercial Affiliates. Buyer to independently verify all information.