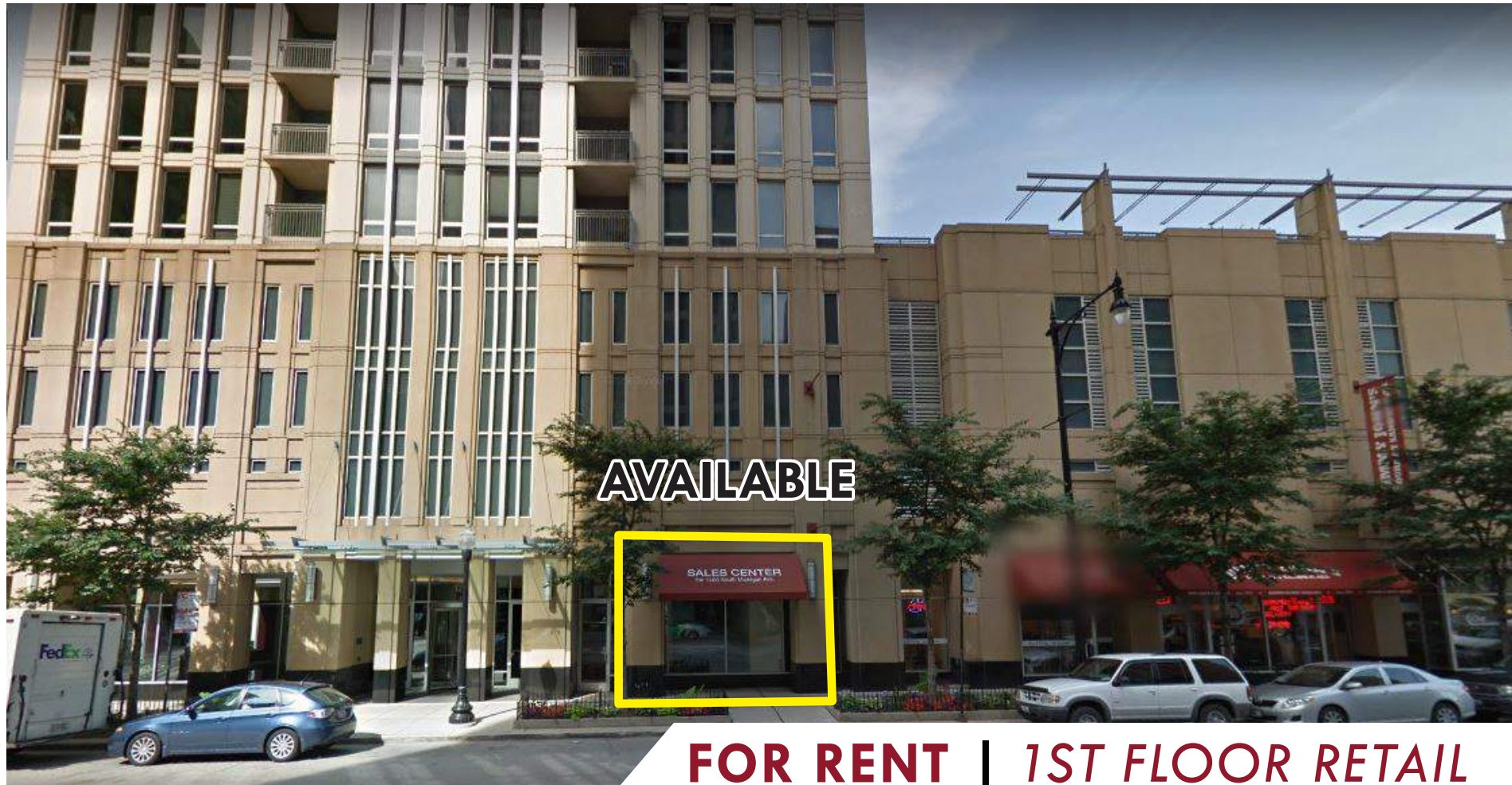




1250 S. MICHIGAN AVE.

CHICAGO, IL 60605



FOR RENT | 1ST FLOOR RETAIL

LOCATED SQUARELY IN THE HEART OF SOUTH LOOP'S DEVELOPMENT BOOM, THIS RETAIL SPACE SITS ON THE GROUND FLOOR OF MICHIGAN AVENUE TOWER'S 229-UNIT, LUXURY CONDO BUILDING, JUST SOUTH OF THE INTERSECTION OF ROOSEVELT ROAD & THE WORLD-FAMOUS MICHIGAN AVE. THE AREA IS AFFLUENT, HIGH DENSITY, AND JUST STEPS FROM THE CTA STATION, MULTIPLE GROCERIES, GRANT PARK, THE MUSEUM CAMPUS, SOLDIER FIELD AND THE MAGNIFICENT MILE

- SPACE AVAILABLE** | 2,092 SF
- RENTAL RATE*** | \$29 / SF NNN
- CAM & TAX** | \$13.81 / SF
- POPULATION** | 46,000+ WITHIN 1 MILE
- AVERAGE HH INCOME** | \$127,000 WITHIN 1 MILE
- TRAFFIC** | 23,800+ VEHICLES PER DAY

*AVAILABLE SPACES ONLY

SURROUNDING

TRADER JOE'S

pure barre
lift • tone • burn

Jewel-Osco



TARGET



RUSH UNIVERSITY MEDICAL CENTER

CONTACT

TERRI COX

312-337-1001 xt. 2028
TCOX@MATANKY.COM

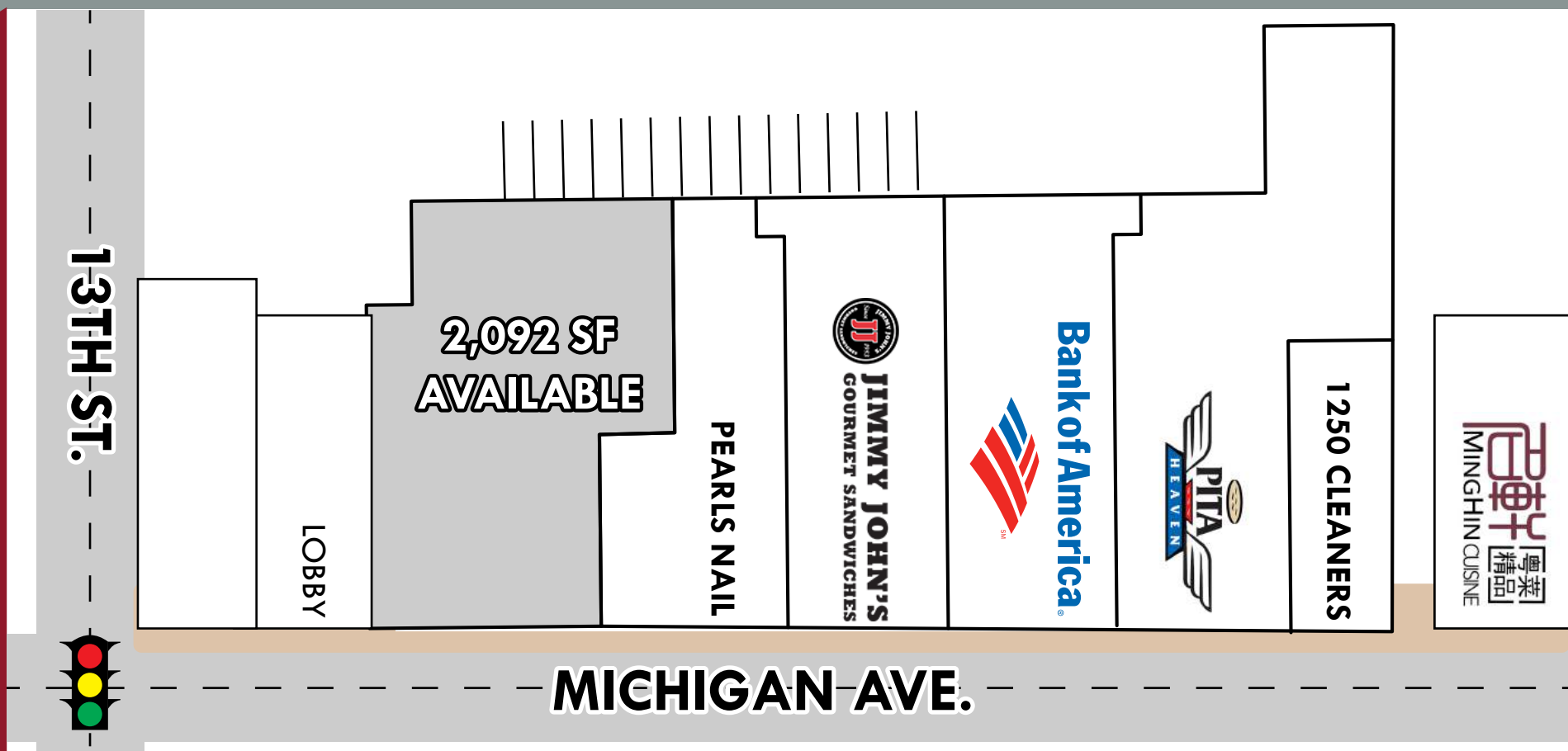
SCOTT LEVINSON

312-337-1001 xt. 2022
SLEVINSON@MATANKY.COM

1250 S. MICHIGAN AVE.

CHICAGO, IL 60605

SITE PLAN



AERIAL MAP



SITE PLAN



312-337-1001



TERRI COX | SCOTT LEVINSON

JOIN US ON:



WWW.MATANKY.COM



MATANKY REALTY GROUP