

RETAIL SPACE
FOR LEASE

340 MILLBURN AVENUE

MILLBURN, NEW JERSEY





PROPERTY HIGHLIGHTS

- Prime corner in downtown Millburn at a signalized intersection
- Located at the southeast corner of Millburn Avenue and Main Street
- Large sidewalk approximately 20' for outdoor dining
- Some parking in rear, building has elevator for accessibility
- Two entrances to the retail space, one on Millburn Avenue and one on Main Street
- Co-tenants: Gong Cha, Starbucks, Blue Mercury, Cycle Bar, Millburn Deli, Playa bowls

AVAILABILITES

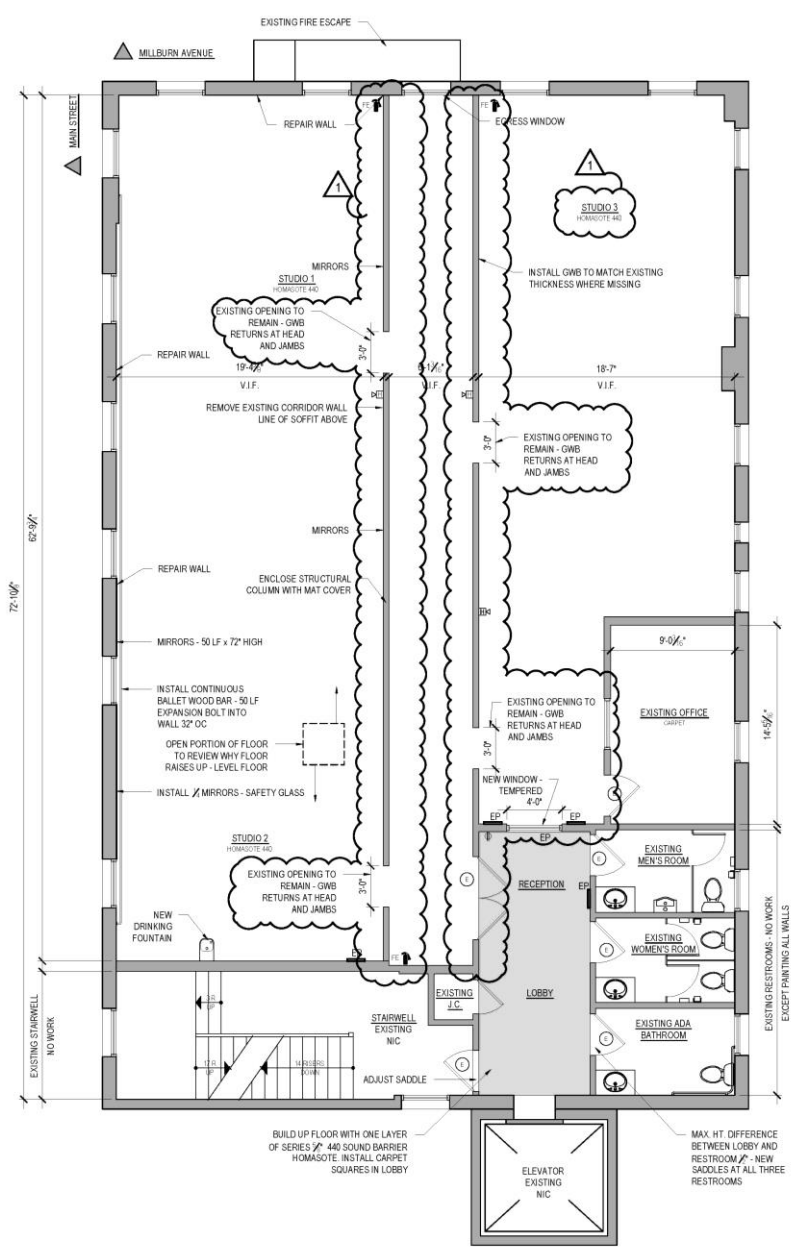
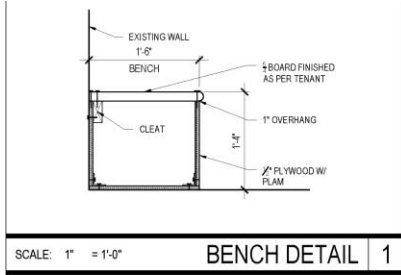
- 2nd Floor: 3,800 SF (former martial arts studio)

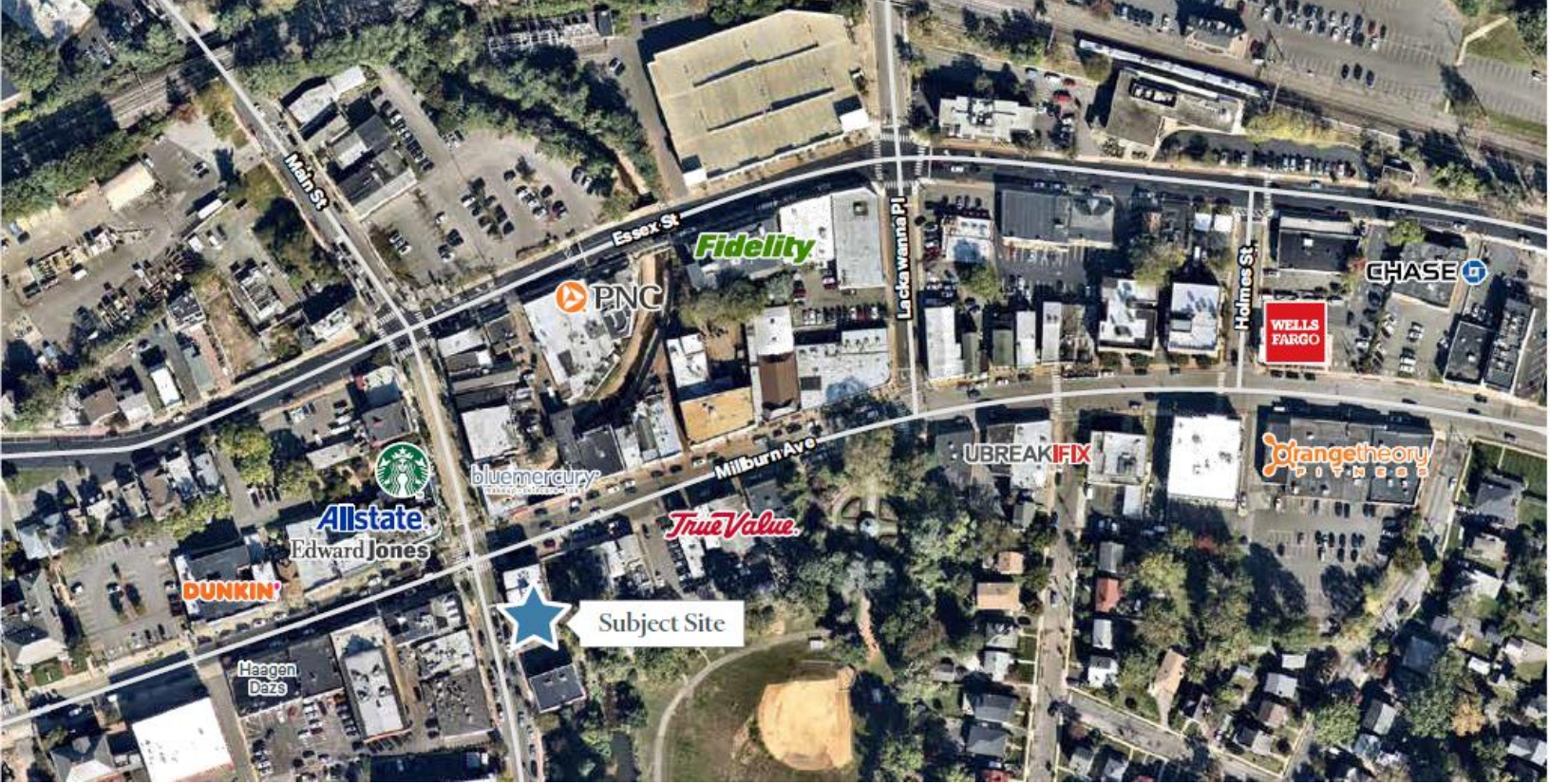
TRAFFIC COUNTS

- Main Street: 12,160 VPD
- Millburn Avenue: 7,920 VPD

FINANCIALS

- Asking rent: Upon request / \$6.50 PSF NNN





340 MILLBURN AVENUE

PLEASE CONTACT:

Marta Villa

Senior Vice President
+1 973 715 8385
marta.villa@cbre.com

© 2022 CBRE, Inc. All rights reserved. This information has been obtained from sources believed reliable, but has not been verified for accuracy or completeness. You should conduct a careful, independent investigation of the property and verify all information. Any reliance on this information is solely at your own risk. CBRE and the CBRE logo are service marks of CBRE, Inc. All other marks displayed on this document are the property of their respective owners, and the use of such logos does not imply any affiliation with or endorsement of CBRE. Photos herein are the property of their respective owners. Use of these images without the express written consent of the owner is prohibited.