

39.3+- Acres For Sale

Highway 221 Moore, SC 29369

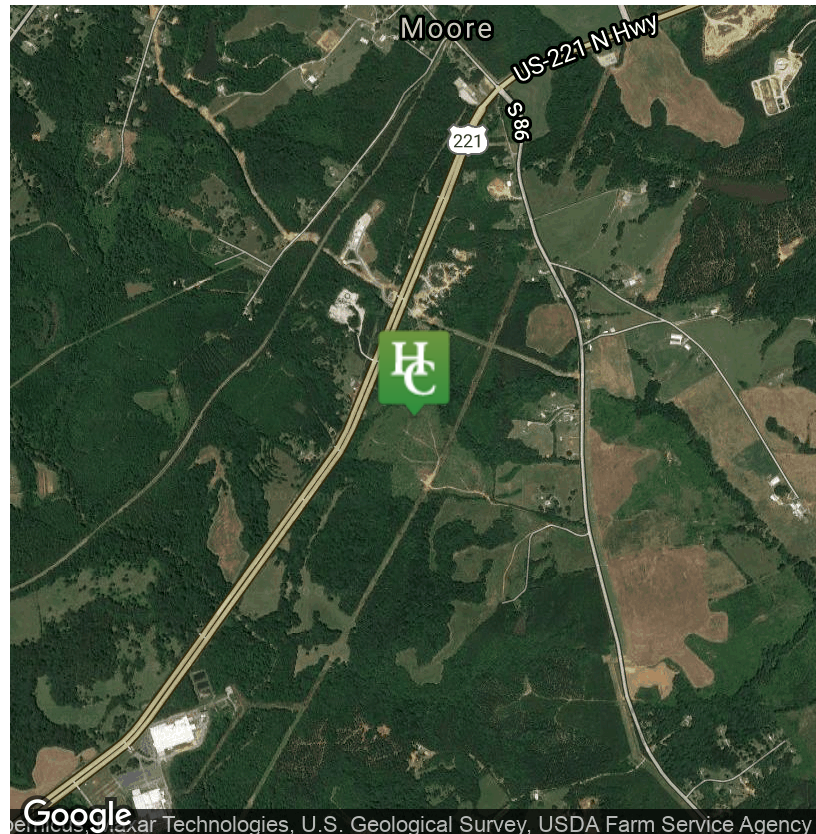


\$3,817/ACRE



Property Details

- Asking Price \$3,817 per acre
- +- 2.1 Miles to I-26
- Located in the industrious Highway 221 and 290 corridor
- +- 15 minutes to Downtown Spartanburg
- Abundant deer population on the property
- 1000 feet of creek follows the property on the Hwy 221 side
- Spartanburg County tax map 6-46-00-045.00
- Water available
- Buyer and or buyers agent(s) to confirm acreage, zoning, utility locations and cost.



✉ Timothy "Dallas" Wright
+1 843 505 2644
dwright@naiearlefurman.com

✉ William "Tripp" Taylor, III
+1 336 260 5523
ttaylor@naiearlefurman.com

No Warranty Or Representation, Express Or Implied, Is Made As To The Accuracy Of The Information Contained Herein, And The Same Is Submitted Subject To Errors, Omissions, Change Of Price, Rental Or Other Conditions, Prior Sale, Lease Or Financing Or Withdrawal Without Notice, And Of Any Special Listing Conditions Imposed By Our Principals No Warranties Or Representations Are Made As To The Condition Of The Property Or Any Hazards Contained Therein Are Any To Be Implied.

📍 101 E Washington St
Greenville, SC 29601
naief.com

Property Description

Highway 221 Moore, SC 29369



Property Overview

This property is another great investment opportunity! Located just over 2 miles from I-26, this +- 39.3 acres is located near the highway 290 and highway 221 intersection in Moore. This property offers access from highway 221 through an easement that leads you to small rolling hills, +- 1000 feet of creek frontage and offers great views of the property and of the neighboring properties. Most of the property has been clear cut it, but it offers the opportunity to plant pines for a long term investment opportunity or offers a better perspective on future development. There are whitetail signs all over the property, from tracts, rubs to scrapes. This is an excellent deer hunting property. You can be out of your office and in the deer stand in just minutes with its close proximity to Spartanburg and surrounding areas.

Location Overview

Located in the industrious Highway 221 and 290 corridor

✉ Timothy "Dallas" Wright
+1 843 505 2644
dwright@naiearlefurman.com

✉ William "Tripp" Taylor, III
+1 336 260 5523
ttaylor@naiearlefurman.com

No Warranty Or Representation, Express Or Implied, Is Made As To The Accuracy Of The Information Contained Herein, And The Same Is Submitted Subject To Errors, Omissions, Change Of Price, Rental Or Other Conditions, Prior Sale, Lease Or Financing Or Withdrawal, Without Notice, And Of Any Special Listing Conditions Imposed By Our Principals No Warranties Or Representations Are Made As To The Condition Of The Property Or Any Hazards Contained Therein Are Any To Be Implied.



Property Photos

Highway 221 | Moore, SC 29369



✉ Timothy "Dallas" Wright
+1 843 505 2644
dwright@naiearlefurman.com

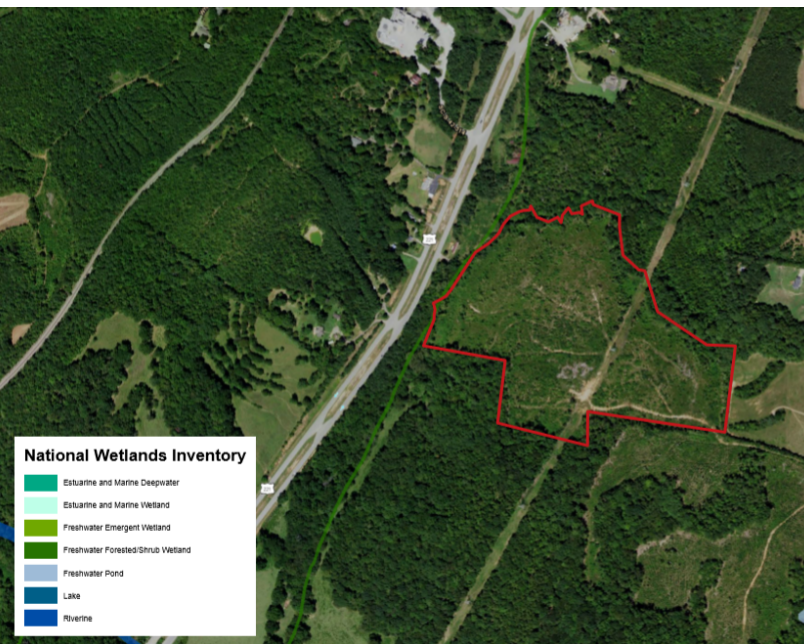
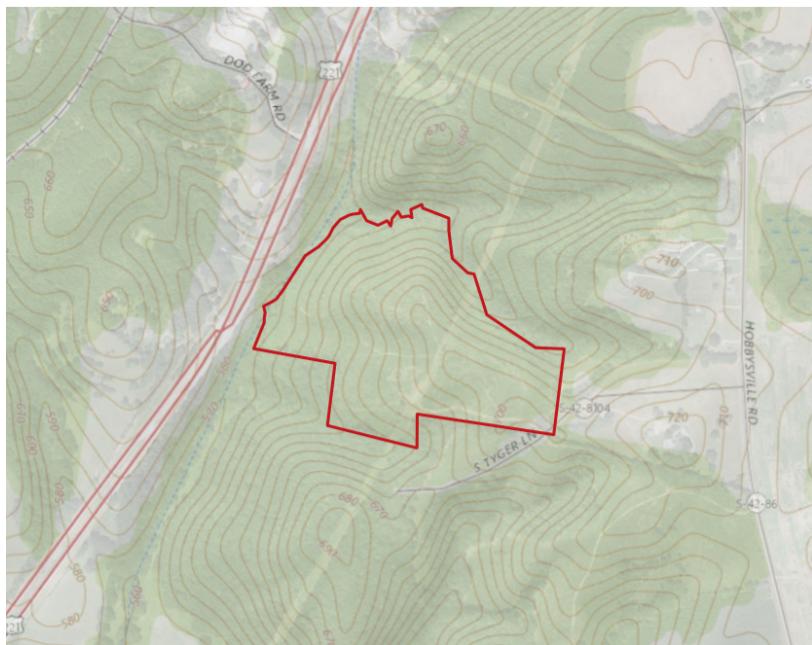
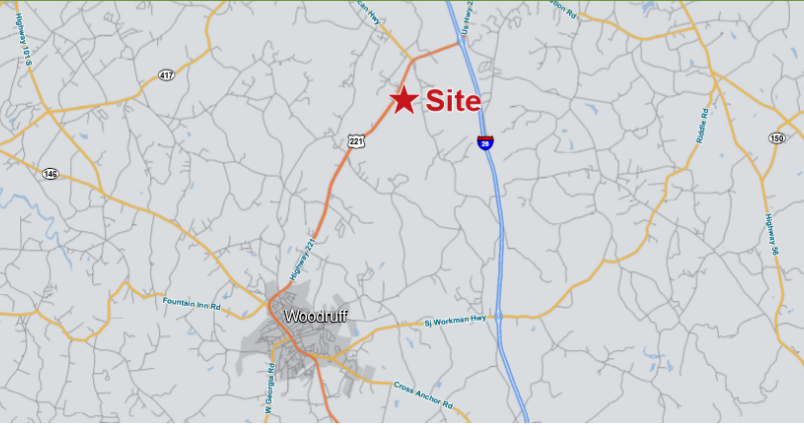
✉ William "Tripp" Taylor, III
+1 336 260 5523
ttaylor@naiearlefurman.com

No Warranty Or Representation, Express Or Implied, Is Made As To The Accuracy Of The Information Contained Herein, And The Same Is Submitted Subject To Errors, Omissions, Change Of Price, Rental Or Other Conditions, Prior Sale, Lease Or Financing Or Withdrawal Without Notice, And Of Any Special Listing Conditions Imposed By Our Principals No Warranties Or Representations Are Made As To The Condition Of The Property Or Any Hazards Contained Therein Are Any To Be Implied.



Map Set

Highway 221 | Moore, SC 29369



No Warranty Of Representation, Express Or Implied, Is Made As To The Accuracy Of The Information Contained Herein, And The Same Is Submitted Subject To Errors, Omissions, Change Of Price, Rental Or Other Conditions, Prior Sale, Lease Or Financing Or Withdrawal Without Notice, And Of Any Special Listing Conditions Imposed By Our Principals No Warranties Or Representations Are Made As To The Condition Of The Property Or Any Hazards Contained Therein Are Any To Be Implied.

✉ Timothy "Dallas" Wright
+1 843 505 2644
dwright@naiearlefurman.com

✉ William "Tripp" Taylor, III
+1 336 260 5523
ttaylor@naiearlefurman.com

