

JEFFERSON PLAZA

CLASS A OFFICE FOR LEASE

27720 JEFFERSON AVENUE - TEMECULA, CA



CLASS "A"
OFFICE FROM
\$1.50 PSF/MO

PROPERTY HIGHLIGHTS:

- » Brand New, Highly Upgraded Lobby
- » ±40,000 SF Class A Office Building
- » Suites from ±947 - 9,114 SF
- » Class A Building Standards
- » Elevator Served
- » Many Offices Feature Balconies
- » Flexible Lease Terms
- » Waterscape Features
- » Easy Access to Interstate 15
- » Ample Parking
- » **From \$1.50 PSF!**



JIM NADAL, CCIM, SIOR • 951.445.4520 • jnadal@leetemecula.com • DRE #01040679

JEFFERSON PLAZA CLASS A OFFICE FOR LEASE

27720 JEFFERSON AVENUE - TEMECULA, CA

SUITE AVAILABILITY			
SUITE #	SIZE ±RSF	MINIMUM LEASE TERM	MONTHLY LEASE RATE
240	947	3 years	\$1,563 (\$1.65 PSF)
140	1,401	3 years	\$2,102 (\$1.50 PSF)
120	2,012	3 years	\$3,320 (\$1.65 PSF)
120/140	3,413	5 years	\$5,324 (\$1.56 PSF)
400	9,114	10 years	\$15,494 (\$1.70 PSF)

5% annual increases.

All rental rates are quoted based upon a Modified Gross Lease form.

Rental rates are subject to change at the Owner's sole discretion.

Rev. 10/28/19



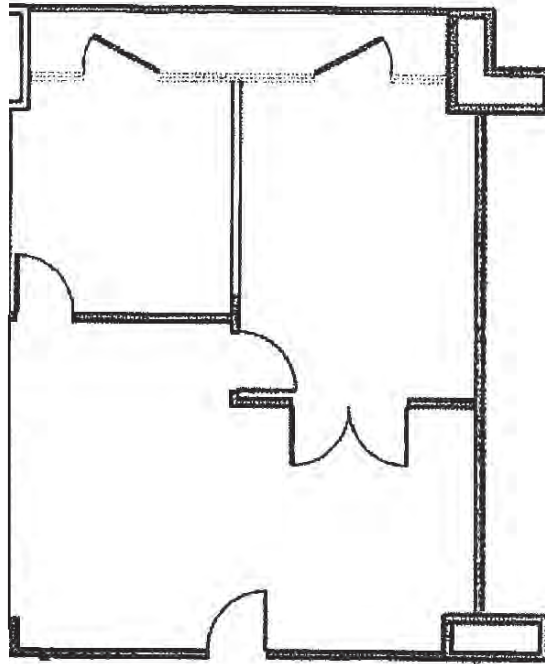
JIM NADAL, CCIM, SIOR • 951.445.4520 • jnadal@leetemecula.com • DRE #01040679

JEFFERSON PLAZA

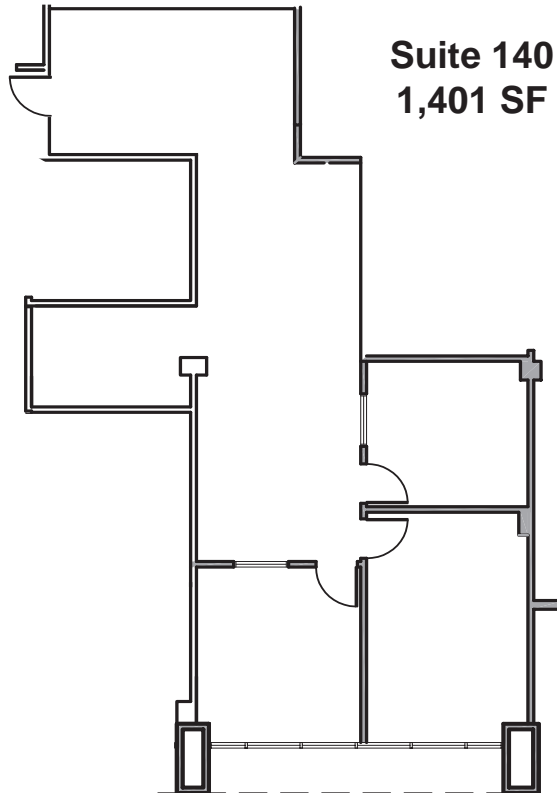
CLASS A OFFICE FOR LEASE

27720 JEFFERSON AVENUE - TEMECULA, CA

Suite 240
947 SF



Suite 140
1,401 SF



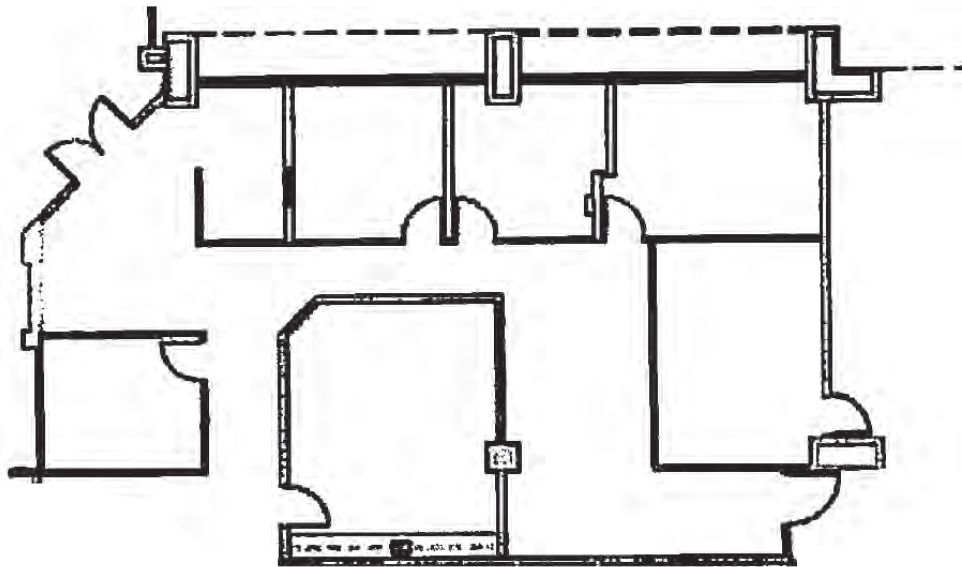
JIM NADAL, CCIM, SIOR • 951.445.4520 • jnadal@leetemecula.com • DRE #01040679

JEFFERSON PLAZA

CLASS A OFFICE FOR LEASE

27720 JEFFERSON AVENUE - TEMECULA, CA

Suite 120
2,012 SF



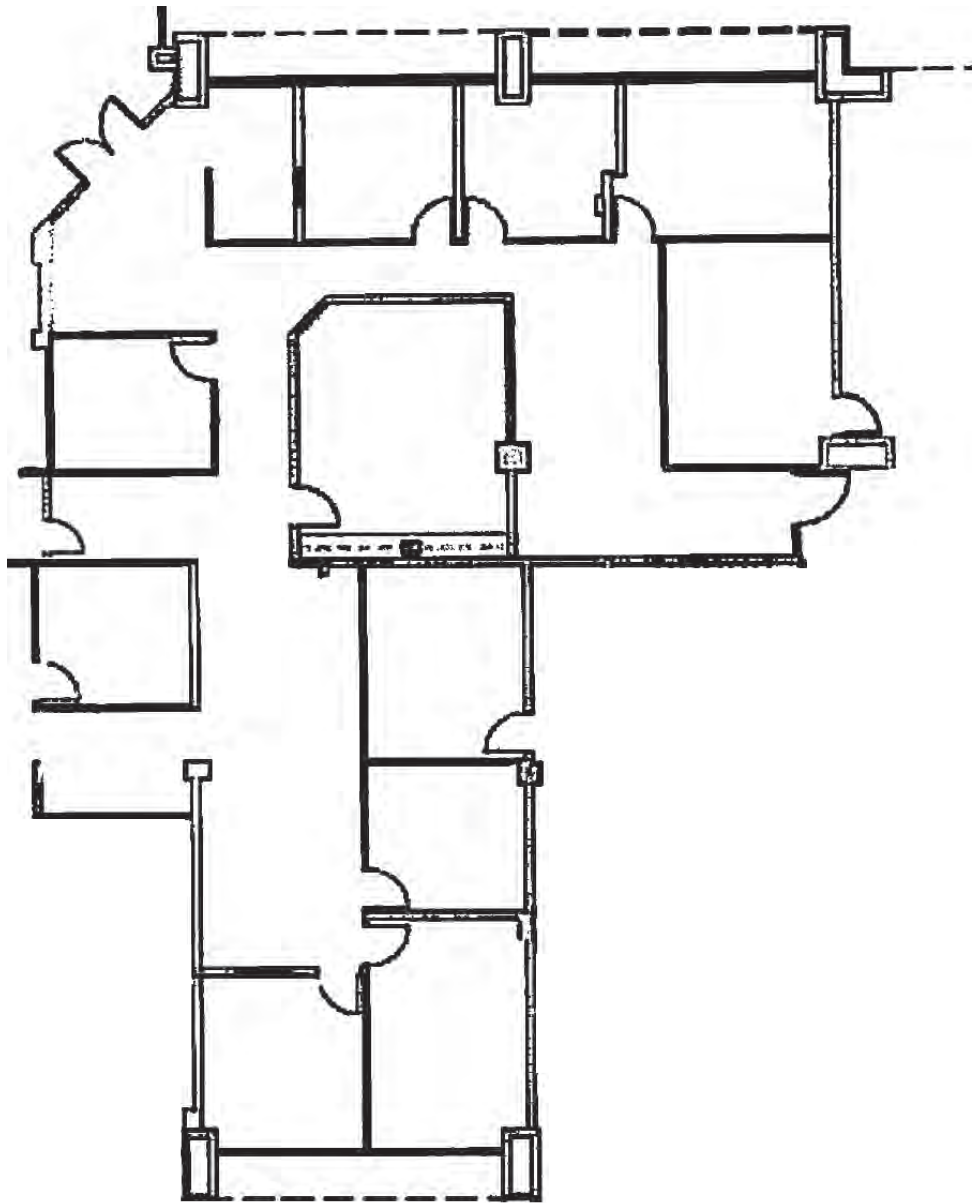
JIM NADAL, CCIM, SIOR • 951.445.4520 • jnadal@leetemecula.com • DRE #01040679

JEFFERSON PLAZA

CLASS A OFFICE FOR LEASE

27720 JEFFERSON AVENUE - TEMECULA, CA

Suite 120/140
3,413 SF



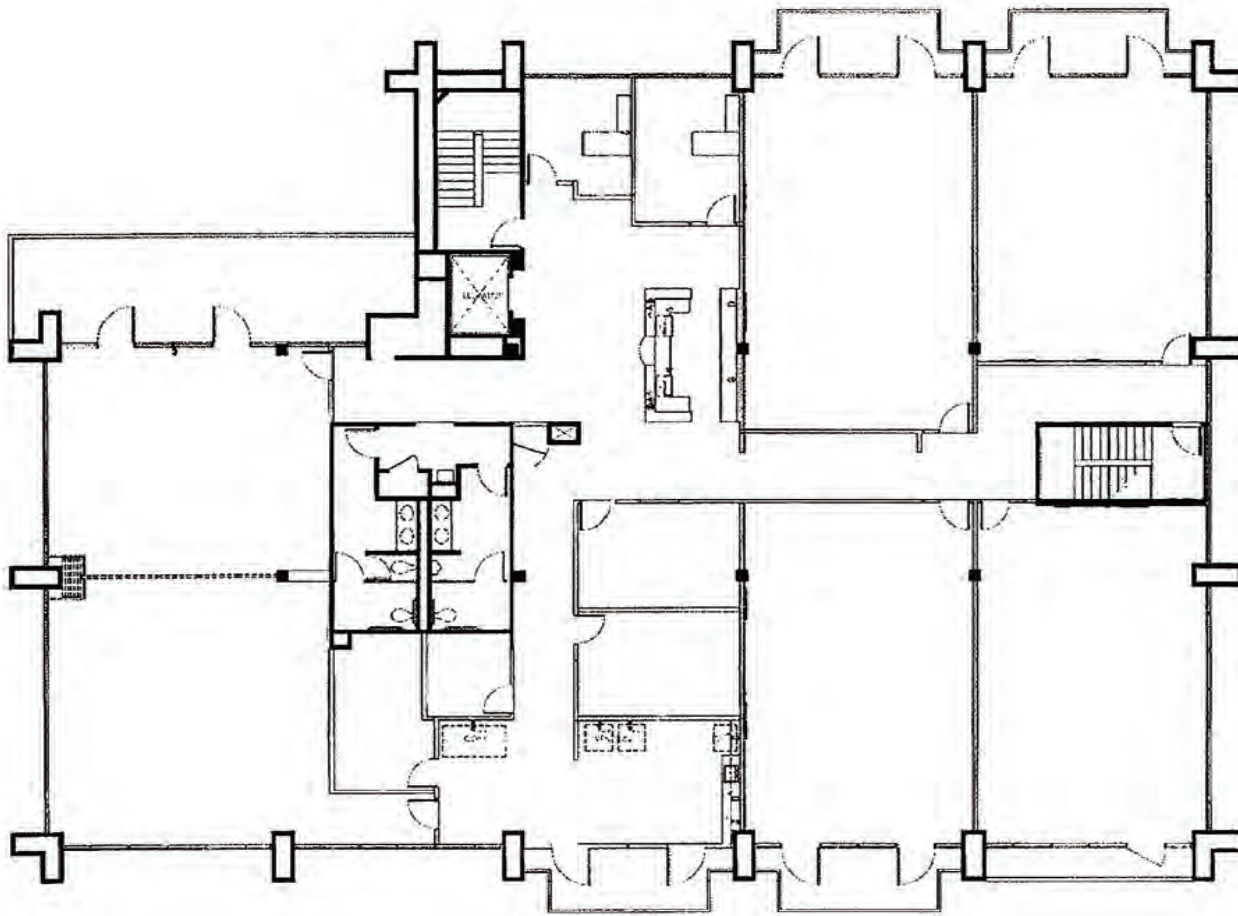
JIM NADAL, CCIM, SIOR • 951.445.4520 • jnadal@leetemecula.com • DRE #01040679

JEFFERSON PLAZA

CLASS A OFFICE FOR LEASE

27720 JEFFERSON AVENUE - TEMECULA, CA

Suite 400
9,114 SF



JIM NADAL, CCIM, SIOR • 951.445.4520 • jnadal@leetemecula.com • DRE #01040679