



5519, 5529, 5577 Riverside Drive
Macon, Bibb County, Georgia 31210

SALE



6± ACRE DEVELOPMENT SITE

SALES PRICE: \$690,000

CBCMACON.COM

DEIDRA STEWART
478.746.8171 Office • 478.508.2652 Cell
deidra@cbcworldwide.com



CBCWORLDWIDE.COM

COLDWELL BANKER COMMERCIAL EBERHARDT & BARRY 990 Riverside Drive Macon, GA 31201 (478) 746-8171

Created 10/27/20



PROPERTY OVERVIEW

5519, 5529, 5577 Riverside Drive
Macon, Bibb County, Georgia 31210

- Located less than two miles from Interstate 75
- The Shoppes at River Crossing, restaurants and retailers within one mile.
- 6± Acre Development Site
- Great location for Multi-Family, Residential Subdivision, Mini/Self-Storage.
- Level, wooded lot
- Sewer available across from site
- 2020 Property Tax Bill: \$3,604.29
- Zoned Agricultural

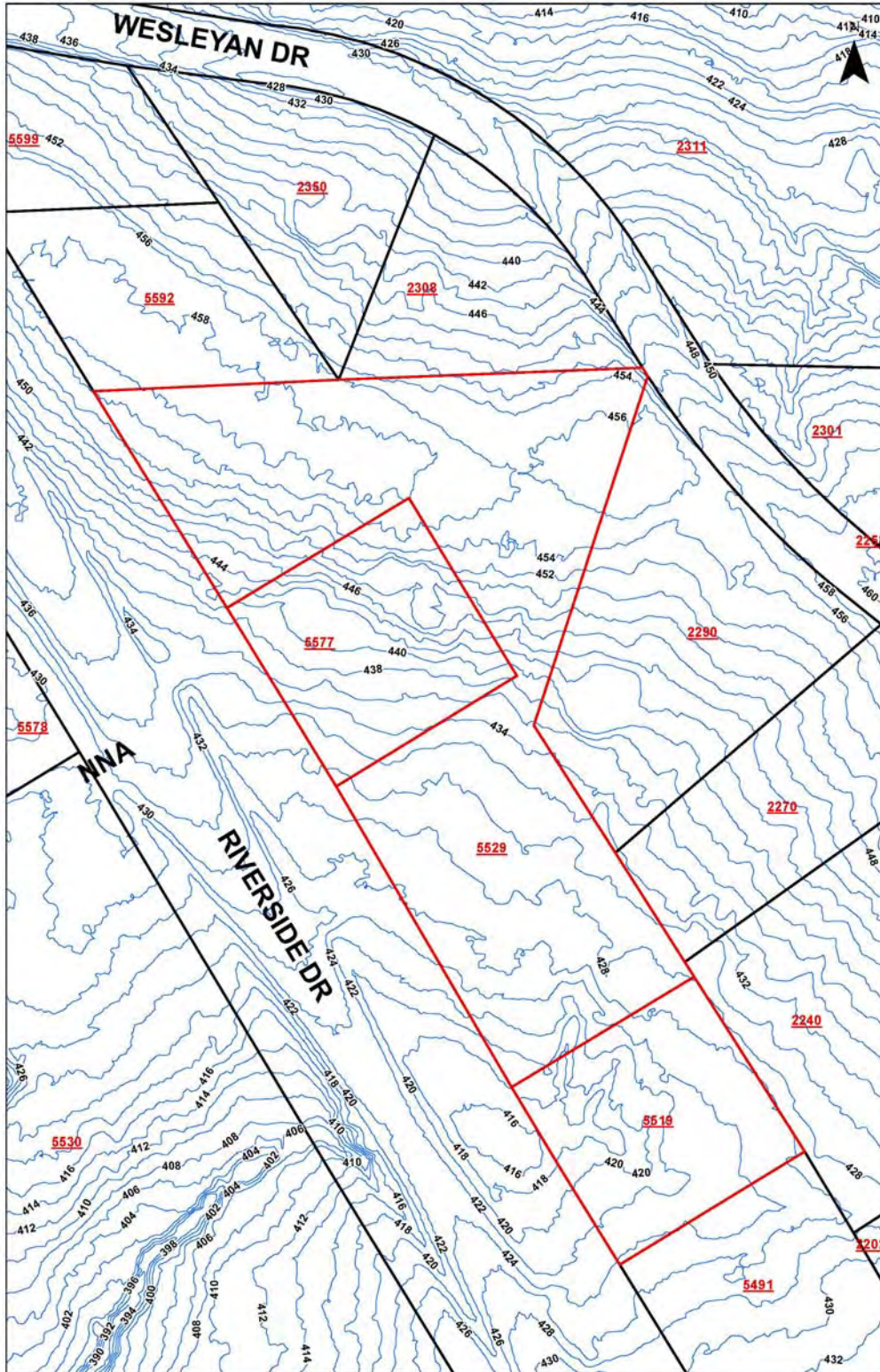


SALES PRICE: \$690,000



TOPO MAP

5519, 5529, 5577 Riverside Drive
Macon, Bibb County, Georgia 31210



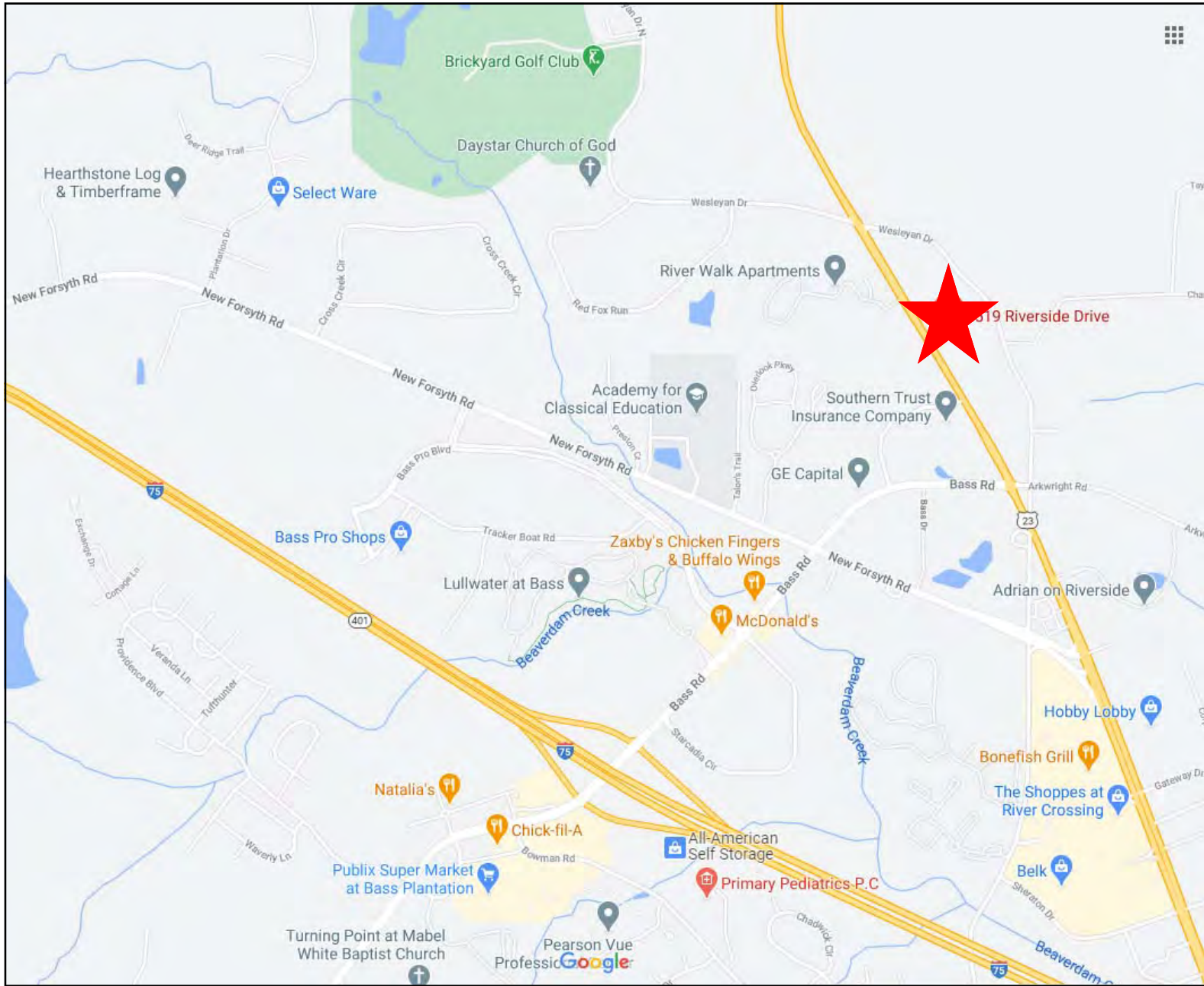
DEIDRA STEWART
478.746.8171 Office • 478.508.2652 Cell
deidra@cbcworldwide.com

CBCMACON.COM



LOCATION MAP

5519, 5529, 5577 Riverside Drive
Macon, Bibb County, Georgia 31210



DEIDRA STEWART
478.746.8171 Office • 478.508.2652 Cell
deidra@cbcworldwide.com

CBCMACON.COM



DEMOGRAPHICS - BIBB COUNTY

5519, 5529, 5577 Riverside Drive
Macon, Bibb County, Georgia 31210

KEY FACTS

156,171

Population



Average Household Size

37.2

Median Age

\$40,970

Median Household Income

EDUCATION

13%

No High School Diploma



31%
High School Graduate



28%
Some College



28%
Bachelor's/Grad/Prof Degree

BUSINESS



6,494

Total Businesses



87,592

Total Employees

EMPLOYMENT



65%

White Collar



18%

Blue Collar



16%

Services

16.1%

Unemployment Rate

INCOME



\$40,970

Median Household Income



\$24,379

Per Capita Income



\$24,540

Median Net Worth

Households By Income

The largest group: <\$15,000 (19.3%)

The smallest group: \$150,000 - \$199,999 (3.3%)

Indicator ▲	Value	Difference	
<\$15,000	19.3%	+8.5%	
\$15,000 - \$24,999	12.8%	+3.6%	
\$25,000 - \$34,999	11.7%	+2.4%	
\$35,000 - \$49,999	13.0%	+0.3%	
\$50,000 - \$74,999	14.8%	-2.9%	
\$75,000 - \$99,999	12.2%	-0.3%	
\$100,000 - \$149,999	9.1%	-5.5%	
\$150,000 - \$199,999	3.3%	-2.9%	
\$200,000+	3.8%	-3.3%	