

One Crosswind Rd., Westerly, RI 02891



FOR LEASE

INDUSTRIAL / FLEX / OFFICE BUILDING

- ≈ 39,306 ± sf one story building;
 - 28,800 Office; 10,500 Warehouse/Mfg
- ≈ 3.1 ± acres
- ≈ Year Built 2000 + 2004
- ≈ Zone GI—Industrial
- ≈ R.E. Taxes \$22,850
- ≈ Handicap Accessible
- ≈ Wet Sprinklered
- ≈ Town Water/Sewer
- ≈ Cooling/Heat: Roof top package units, natural gas fired.
- ≈ 1200 amps 120/208v
- ≈ 350kw diesel Generator
- ≈ Roof—rubber membrane, approx. 12-18 yrs old
- ≈ One Loading Dock ≈ Ceiling 12'
- ≈ Plot/Lot: 119 / 5E ≈ 161 Parking

OFFICE \$12/sf NNN
MFG/STORAGE \$6/sf NNN



John Jensen, SIOR

Pequot Commercial

15 Chesterfield Road, Suite 4

East Lyme, CT 06333

860-447-9570 x131

860-444-6661 Fax

jjensen@pequotcommercial.com



This very well maintained masonry/steel framed flex building is located in the Westerly Airport Industrial Park. The location serves South County and Providence, RI as well as the greater New England and NY State areas.

The building was constructed in 2 phases. According to Town of Westerly records, the first phase was constructed in 2000 and comprises 15,667+/-sf. The second phase was constructed in 2004 and comprises 23,700+/-sf.

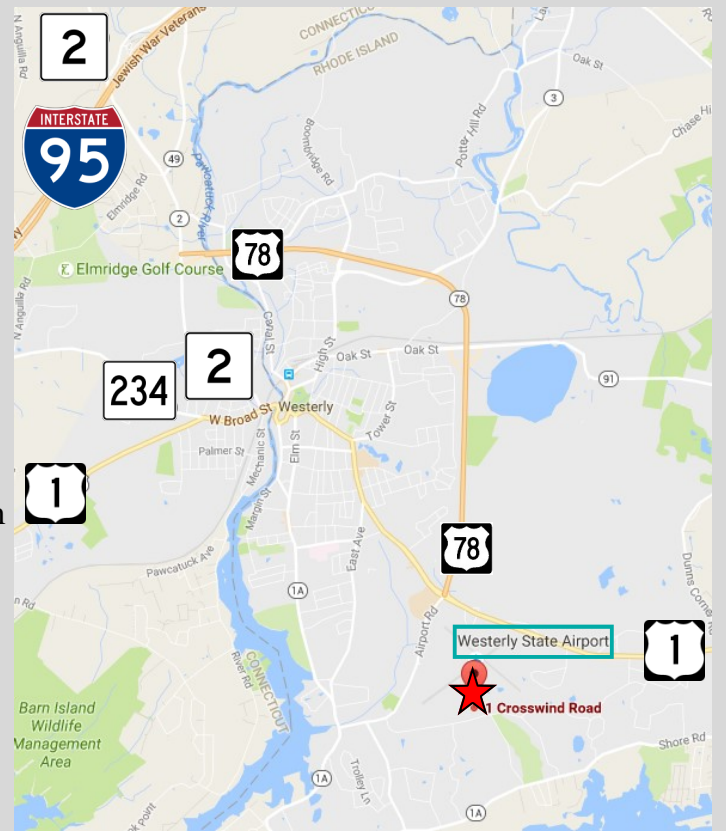
The current building comprises 39,367+/-sf and is situated on 3.1+/- acres of level land. There are 161 parking spaces. The roof is rubber membrane (12-18 years) and has been well maintained. Water and sewer are provided by the Town of Westerly, RI. Natural gas and electricity are provided by National Grid.

The space affords areas for manufacturing, office and warehousing. There is a loading dock with leveler that can easily handle 53' trailers and there is a smaller dock for panel and van truck deliveries. There are three (3) rooms dedicated to Internet, Computer and Phone services. Column spacing of between 33' and 50' afford flexibility of interior design. (A more complete list of details is contained in this brochure.)

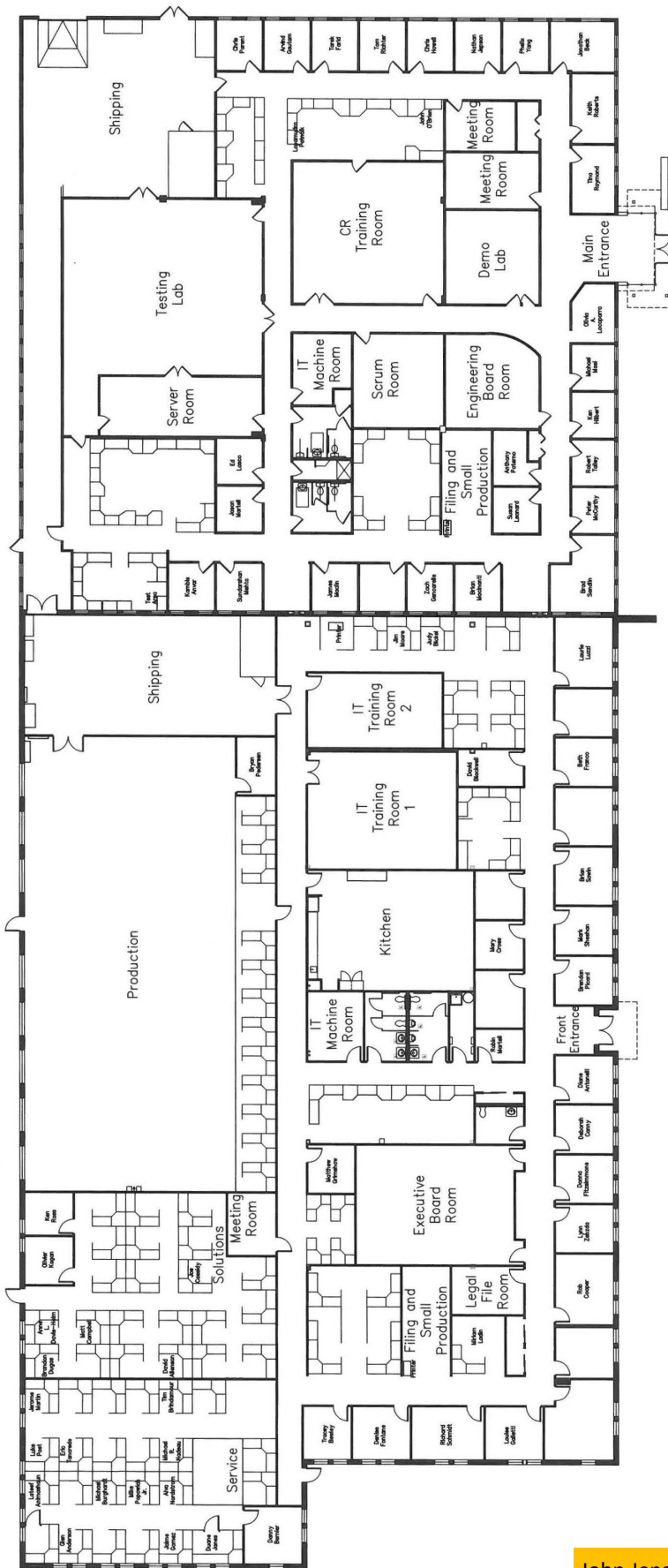
This property affords numerous businesses an excellent opportunity to increase production and provide a high-quality work environment.

FOR LEASE: Office \$12/sf NNN
Mfg/Storage \$6/sf NNN

John Jensen, SIOR 860-447-9570 x131



Total Square Footage of Building
39,306
Square Foot



John Jensen, SIOR 860-447-9570 x131



Front



Generator



Southeast side



Reception



Conference room



Typical Bull pen

John Jensen, SIOR 860-447-9570 x131



Typical Office



Training room



Cafeteria / Breakroom



Sprinkler—Main



Server room

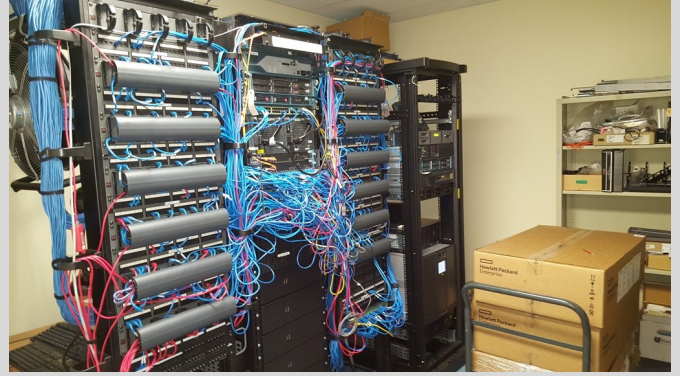


Mfg / Warehouse

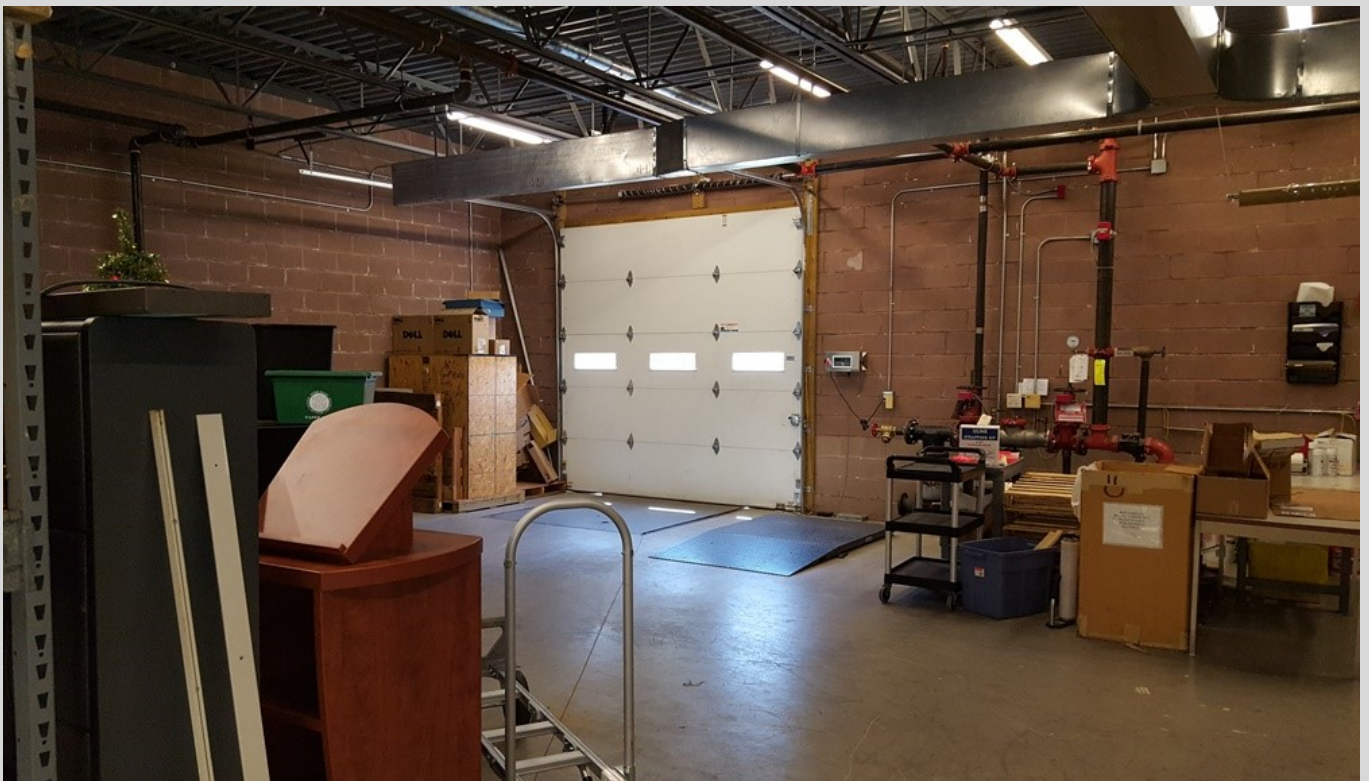
John Jensen, SIOR 860-447-9570 x131



D Mark room



Internet Server room



Shipping & Receiving

John Jensen, SIOR 860-447-9570 x131

ZONING

260 Attachment 11

Town of Westerly
Zoning District Use Tables
[Amended 10-12-2004 by Ch. No. 1510; 12-13-2004 by Ch. No. 1520; 6-13-2005 by Ch. No. 1544; 4-9-2007 by Ch. No. 1611; 11-19-2007 by Ch. No. 1621; 9-13-2010 by Ch. No. 1721; 1-14-2013 by Ch. No. 1781; 9-9-2013 by Ch. No. 1793; 10-7-2013 by Ch. No. 1796; 3-9-2015 by Ch. No. 1834; 5-16-2016 by Ch. No. 1860]

| Code Use | | Standard Use Tables | | | | | | | | | | | | | OSR - Open Space and Recreational | | | | | | | | | | | | | |
|--|---|--|-------|-------|-------|-------|-------|-------|------|-----|-----|-----|----|----|-----------------------------------|-------|------|----|----|----|-----|-----|----|-----|----------|-----|---------------|--|
| | | RR60 | LDR43 | LDR40 | MDR30 | MDR20 | HDR15 | HDR10 | HDR6 | P15 | DC1 | DC2 | NB | HC | GC | SC-WH | SC-G | MC | G1 | LI | ORT | OSR | CR | APO | Comments | | | |
| A. RESIDENTIAL | | | | | | | | | | | | | | | | | | | | | | | | | | | | |
| 1 | Single family | P | P | P | P | P | P | P | P | P | P | P | P | P | N | N | N | N | N | N | N | N | N | N | N | P | See § 260-59. | |
| 2 | Two family | N | N | N | N | N | N | N | N | N | N | N | N | N | N | N | N | N | N | N | N | N | N | N | N | P | See § 260-60. | |
| 3 | Three family | N | N | N | N | N | N | N | N | N | N | N | N | N | N | N | N | N | N | N | N | N | N | N | N | P | See § 260-61. | |
| 4 | Multi-family - 4 or more units | N/S* | N | N/S* | N/S* | N | N | N | N | N | N | N | N | N | N | N | N | N | N | N | N | N | N | N | N | P | See § 260-62. | |
| 5 | Bed-and-breakfast and guesthouse | *N/S denotes prohibited except permitted by special use permit pursuant to § 260-62B on those particular parcels designated therein. | | | | | | | | | | | | | | | | | | | | | | | | | | |
| 6 | Boarding and lodging house | N | N | N | N | N | N | N | N | N | N | N | N | N | N | N | N | N | N | N | N | N | N | N | N | P | See § 260-53. | |
| 7 | Cluster development | P | P | P | P | P | P | P | P | P | P | P | P | P | N | N | N | N | N | N | N | N | N | N | N | P | See § 260-46. | |
| 8 | Hotels | N | N | N | N | N | N | N | N | N | N | N | N | N | N | N | N | N | N | N | N | N | N | N | N | P/Q | | |
| 8(A) | Oceanfront historic hotel | N | P | N | N | S | N | N | N | N | N | N | N | N | N | N | N | N | N | N | N | N | N | N | N | N | | |
| 9 | Motels | N | N | N | N | N | N | N | N | N | N | N | N | N | N | N | N | N | N | N | N | N | N | N | N | P/Q | | |
| 10 | Inns | N | N | N | N | N | N | N | N | N | N | N | N | N | N | N | N | N | N | N | N | N | N | N | N | P/Q | See § 260-56. | |
| 11 | Assisted living/congregate living | N | N | N | N | N | N | N | N | N | N | N | N | N | N | N | N | N | N | N | N | N | N | N | N | P/Q | | |
| 12 | Nursing homes | N | N | N | N | N | N | N | N | N | N | N | N | N | N | N | N | N | N | N | N | N | N | N | N | P/Q | | |
| 13 | Community residence | P | P | P | P | P | P | P | P | P | P | P | P | P | N | N | N | N | N | N | N | N | N | N | N | P/Q | See § 260-9. | |
| 14 | Family day-care homes | P | P | P | P | P | P | P | P | P | P | P | P | P | N | N | N | N | N | N | N | N | N | N | N | P/Q | See § 260-9. | |
| 15 | Halfway house | N | N | N | N | N | N | N | N | N | N | N | N | N | N | N | N | N | N | N | N | N | N | N | N | P/Q | See § 260-9. | |
| 16 | Transient residential facility | N | N | N | N | N | N | N | N | N | N | N | N | N | N | N | N | N | N | N | N | N | N | N | N | P/Q | See § 260-9. | |
| 17 | Mobile home parks | N | N | N | N | N | N | N | N | N | N | N | N | N | N | N | N | N | N | N | N | N | N | N | N | N | See § 260-9. | |
| 18 | Mixed-use development | N | N | N | N | N | N | N | N | N | N | N | N | N | N | N | N | N | N | N | N | N | N | N | N | P | See § 260-64. | |
| 19 | Accessory apartment | S | S | S | S | S | S | S | S | S | S | S | S | S | N | N | N | N | N | N | N | N | N | N | N | P/Q | See § 260-9. | |
| B. AGRICULTURAL, EXTRACTIVE AND INDUSTRIAL NONMANUFACTURING | | | | | | | | | | | | | | | | | | | | | | | | | | | | |
| 1 | General farms | P | N | P | N | N | N | N | N | N | N | N | N | N | N | N | N | N | N | N | N | N | N | N | N | N | Q | |
| 2 | Dimension stone mining | S | N | S | N | N | N | N | N | N | N | N | N | N | N | N | N | N | N | N | N | N | N | N | N | Q | | |
| 3 | Crushed and broken stone mining | N | N | N | N | N | N | N | N | N | N | N | N | N | N | N | N | N | N | N | N | N | N | N | N | Q | | |
| 4 | Commercial soil, sand and gravel removal | N | N | N | N | N | N | N | N | N | N | N | N | N | N | N | N | N | N | N | N | N | N | N | N | Q | | |
| 5 | Junkyards and scrap wholesaling | N | N | N | N | N | N | N | N | N | N | N | N | N | N | N | N | N | N | N | N | N | N | N | N | Q | | |
| 6 | Recycling facility, storage only | N | N | N | N | N | N | N | N | N | N | N | N | N | N | N | N | N | N | N | N | N | N | N | N | Q | | |
| 7 | Open lot storage of building material and machinery | N | N | N | N | N | N | N | N | N | N | N | N | N | N | N | N | N | N | N | N | N | N | N | N | Q | | |

P = Permitted
S = Special Permit
N = Not Permitted

WESTERLY CODE

Standard Use Tables

| | | | |
|----------------------------------|----------------------------|---|-----------------------------------|
| RR - Rural Residential | P - Professional | SC-WH - Shore Commercial - Watch Hill | OSR - Open Space and Recreational |
| LDR - Low Density Residential | DC - Downtown Center | SC-G - Shore Commercial - General | CR - Commercial Recreational |
| MC - Marine Commercial | NB - Neighborhood Business | GI - General Industrial | APO - Aquifer Protection Overlay |
| MDR - Medium Density Residential | HC - Highway Commercial | LI - Light Industrial | |
| HDR - High Density Residential | GC - General Commercial | ORT - Office Research, Assembly and Tech. | |

| Code | Use | RR60 | LDR43 | LDR40 | MDR30 | MDR20 | HDR15 | HDR10 | HDR6 | P15 | DC1 | DC2 | NB | HC | GC | SC-WH | SC-G | MC | GI | LI | ORT | OSR | CR | APO | Comments |
|------|--|------|-------|-------|-------|-------|-------|-------|------|-----|-----|-----|----|----|----|-------|------|----|----|----|-----|-----|----|-----|----------|
| 8 | Open lot storage of sand and gravel | N | N | N | N | N | N | N | N | N | N | N | N | N | N | N | N | N | N | S | N | N | N | Q | |
| 9 | Storage of flammable or explosive materials above ground | N | N | N | N | N | N | N | N | N | N | N | N | N | N | N | N | N | S | S | N | N | N | N | |
| 10 | Storage of flammable or explosive materials below ground | N | N | N | N | N | N | N | N | N | N | N | N | N | N | N | N | N | S | S | N | N | N | N | |
| 11 | Dry-cleaning plant/laundry establishments | N | N | N | N | N | N | N | N | N | N | N | S | S | S | N | N | N | S | S | N | N | N | N | |
| 12 | Nonmanufacturing industries not herein specified | N | N | N | N | N | N | N | N | N | N | N | S | S | S | N | N | N | S | S | N | N | N | Q | |

C. MANUFACTURING

| | | | | | | | | | | | | | | | | | | | | | | | | | |
|----|---|---|---|---|---|---|---|---|---|---|---|---|---|---|---|---|---|---|---|---|---|---|---|---|--|
| 1 | Food and kindred products | N | N | N | N | N | N | N | N | N | N | N | N | N | N | N | N | N | P | P | N | N | N | Q | |
| 2 | Textile mill products | N | N | N | N | N | N | N | N | N | N | N | N | N | N | N | N | N | P | P | N | N | N | Q | |
| 3 | Apparel and other finished products from fabrics | N | N | N | N | N | N | N | N | N | N | N | N | N | N | N | N | N | P | P | N | N | N | Q | |
| 4 | Lumber and wood products except furniture | N | N | S | N | N | N | N | N | N | N | N | N | N | N | N | N | N | P | N | N | N | N | Q | |
| 5 | Sawmills and planing mills | N | N | S | N | N | N | N | N | N | N | N | N | N | N | N | N | N | P | N | N | N | N | Q | |
| 6 | Millwork and prefabricated structural wood products | N | N | N | N | N | N | N | N | N | N | N | N | N | N | N | N | N | P | P | N | N | N | Q | |
| 7 | Furniture and furnishings | N | N | N | N | N | N | N | N | N | N | N | N | N | N | N | N | N | P | P | N | N | N | Q | |
| 8 | Manufactured products from paper and paperboard | N | N | N | N | N | N | N | N | N | N | N | N | N | N | N | N | N | P | P | N | N | N | Q | |
| 9 | Printing and publishing | N | N | N | N | N | N | N | N | N | P | P | P | P | P | N | N | N | P | P | N | N | N | Q | |
| 10 | Chemicals and pharmaceuticals | N | N | N | N | N | N | N | N | N | N | N | N | N | N | N | N | N | P | P | N | N | N | Q | |
| 11 | Petroleum refining and related industries | N | N | N | N | N | N | N | N | N | N | N | N | N | N | N | N | N | N | N | N | N | N | N | |
| 12 | Light manufacturing | N | N | N | N | N | N | N | N | N | N | N | N | P | P | N | N | N | P | P | N | S | N | Q | |
| 13 | Asphalt Plants | N | N | N | N | N | N | N | N | N | N | N | N | N | N | N | N | N | N | N | N | N | N | N | |

D. MANUFACTURING

| | | | | | | | | | | | | | | | | | | | | | | | | | | |
|---|-----------------------------------|---|---|---|---|---|---|---|---|---|---|---|---|---|---|---|---|---|---|---|---|---|---|---|---|--|
| 1 | Rubber and miscellaneous plastics | N | N | N | N | N | N | N | N | N | N | N | N | N | N | N | N | N | N | N | N | N | N | N | N | |
| 2 | Leather tanning and finishing | N | N | N | N | N | N | N | N | N | N | N | N | N | N | N | N | N | N | P | N | N | N | Q | | |
| 3 | Glass and glassware | N | N | N | N | N | N | N | N | N | N | N | N | N | N | N | N | N | N | P | N | N | N | Q | | |
| 4 | Pottery and related products | N | N | N | N | N | N | N | N | N | N | N | N | N | N | N | N | N | N | P | N | N | N | Q | | |
| 5 | Concrete products | N | N | N | N | N | N | N | N | N | N | N | N | N | N | N | N | N | N | P | N | N | N | Q | | |
| 6 | Cut-stone and stone products | N | N | N | N | N | N | N | N | N | N | N | N | N | N | N | N | N | N | P | N | N | N | Q | | |

P = Permitted
S = Special Permit
N = Not Permitted

ZONING

Standard Use Tables

| Code | Use | SC-WH - Shore Commercial - Watch Hill SC-G - Shore Commercial - General GI - General Industrial LI - Light Industrial ORT - Office Research, Assembly and Tech. | | | | | | | | | | | | | OSR - Open Space and Recreational CR - Commercial Recreational APO - Aquifer Protection Overlay | | | | | | | | | | |
|--|---|---|-------|-------|-------|-------|-------|-------|------|-----|-----|-----|----|----|---|-------|------|----|----|----|-----|-----|----|-----|---------------|
| | | RR60 | LDR43 | LDR40 | MDR30 | MDR20 | HDR15 | HDR10 | HDR6 | P15 | DC1 | DC2 | NB | HC | GC | SC-WH | SC-G | MC | GI | LI | ORT | OSR | CR | APO | Comments |
| | RR - Rural Residential LDR - Low Density Residential MC - Marine Commercial MDR - Medium Density Residential HDR - High Density Residential | | | | | | | | | | | | | | | | | | | | | | | | |
| 7 | Fabricated metal products except ordnance, machinery and transportation equipment | N | N | N | N | N | N | N | N | N | N | N | N | N | N | N | N | N | P | N | N | N | N | Q | |
| 8 | Coating and engraving | N | N | N | N | N | N | N | N | N | N | N | N | N | N | N | N | N | P | S | N | N | N | N | |
| 9 | Machinery, except electrical | N | N | N | N | N | N | N | N | N | N | N | N | N | N | N | N | N | P | S | N | N | N | Q | |
| 10 | Electrical and electrical machinery equipment and supplies except batteries | N | N | N | N | N | N | N | N | N | N | N | N | N | N | N | N | N | P | S | N | N | N | Q | |
| 11 | Transportation equipment | N | N | N | N | N | N | N | N | N | N | N | N | N | N | N | N | N | P | N | N | N | N | Q | |
| 12 | Ship or boat building and repairs | N | N | N | N | N | N | N | N | N | N | N | N | N | N | N | N | N | P | P | N | N | N | Q | |
| 13 | Professional and scientific controlling instruments | N | N | N | N | N | N | N | N | N | N | N | N | N | N | N | N | N | P | P | N | N | N | Q | |
| 14 | Photo and optical goods, watches and clocks | N | N | N | N | N | N | N | N | N | N | N | N | N | N | N | N | N | P | P | N | N | N | Q | |
| 15 | Electric assembly | N | N | N | N | N | N | N | N | N | N | N | N | N | N | N | N | N | P | P | N | N | N | Q | |
| 16 | Miscellaneous manufacturing industries not specifically excluded herein | N | N | N | N | N | N | N | N | N | N | N | N | N | N | N | N | N | S | S | N | N | N | Q | |
| E. TRANSPORTATION, COMMUNICATIONS, UTILITIES AND SERVICES | | | | | | | | | | | | | | | | | | | | | | | | | |
| 1 | Railroad transportation services | N | N | N | N | N | N | N | N | N | N | N | N | N | N | N | N | N | P | P | N | N | N | Q | |
| 2 | Bus passenger station | N | N | N | N | N | N | N | N | N | N | N | N | N | N | N | N | N | P | P | N | N | N | Q | |
| 3 | Taxis/cabs/taxi stand | N | N | N | N | N | N | N | N | N | N | N | N | N | N | N | N | N | P | P | N | N | N | P | |
| 4 | School bus (storage) | N | N | N | N | N | N | N | N | N | N | N | N | N | N | N | N | N | P | P | N | N | N | Q | |
| 5 | Commercial dock or pier | N | N | N | N | N | N | N | N | N | N | N | N | N | N | N | N | N | P | P | N | N | N | Q | |
| 6 | Trucking transportation and short term storage | N | N | N | N | N | N | N | N | N | N | N | N | N | N | N | N | N | P | P | N | N | N | Q | |
| 7 | Local and long distance trucking without storage | N | N | N | N | N | N | N | N | N | N | N | N | N | N | N | N | N | P | P | N | N | N | Q | |
| 8 | Local and long distance trucking with storage | N | N | N | N | N | N | N | N | N | N | N | N | N | N | N | N | N | P | P | N | N | N | Q | |
| 9 | Motor freight terminal | N | N | N | N | N | N | N | N | N | N | N | N | N | N | N | N | N | P | P | N | N | N | Q | |
| 10 | Airport and heliport | N | N | N | N | N | N | N | N | N | N | N | N | N | N | N | N | N | S | N | N | N | N | Q | See § 260-75. |
| 11 | General warehousing | N | N | N | N | N | N | N | N | N | N | N | N | N | N | N | N | N | P | P | N | N | N | Q | |
| 12 | Ministorage | N | N | N | N | N | N | N | N | N | N | N | N | N | N | N | N | N | P | P | N | N | N | N | |
| 13 | Communication, including towers and antennas | | | | | | | | | | | | | | | | | | | | | | | | See § 260-84. |
| 14 | Fuel and power (for use or sale off site) | N | N | N | N | N | N | N | N | N | N | N | N | N | N | N | N | N | S | S | N | N | N | N | |

P = Permitted
S = Special Permit
N = Not Permitted

WESTERLY CODE

Standard Use Tables

| Code | Use | SC-WH - Shore Commercial - Watch Hill | | | | | | | | | | | OSR - Open Space and Recreational | | | | | | | | | | | | | |
|------|---|---------------------------------------|-------|-------|-------|-------|-------|-------|------|-----|-----|-----|-----------------------------------|----|----|-------|------|----|----|----|-----|-----|----|-----|----------|---|
| | | RR60 | LDR43 | LDR40 | MDR30 | MDR20 | HDR15 | HDR10 | HDR6 | P15 | DC1 | DC2 | NB | HC | GC | SC-WH | SC-G | MC | GI | LI | ORT | OSR | CR | APO | Comments | |
| | RR - Rural Residential | | | | | | | | | | | | | | | | | | | | | | | | | |
| | LDR - Low Density Residential | | | | | | | | | | | | | | | | | | | | | | | | | |
| | MC - Marine Commercial | | | | | | | | | | | | | | | | | | | | | | | | | |
| | MDR - Medium Density Residential | | | | | | | | | | | | | | | | | | | | | | | | | |
| | HDR - High Density Residential | | | | | | | | | | | | | | | | | | | | | | | | | |
| | P - Professional | | | | | | | | | | | | | | | | | | | | | | | | | |
| | DC - Downtown Center | | | | | | | | | | | | | | | | | | | | | | | | | |
| | NB - Neighborhood Business | | | | | | | | | | | | | | | | | | | | | | | | | |
| | HC - Highway Commercial | | | | | | | | | | | | | | | | | | | | | | | | | |
| | GC - General Commercial | | | | | | | | | | | | | | | | | | | | | | | | | |
| | SC-G - Shore Commercial - General | | | | | | | | | | | | | | | | | | | | | | | | | |
| | GI - General Industrial | | | | | | | | | | | | | | | | | | | | | | | | | |
| | LI - Light Industrial | | | | | | | | | | | | | | | | | | | | | | | | | |
| | ORT - Office Research, Assembly and Tech. | | | | | | | | | | | | | | | | | | | | | | | | | |
| | 15 Sanitary sewage disposal services | N | N | N | N | N | N | N | N | N | N | N | N | N | N | N | N | N | N | N | N | N | N | N | N | N |
| | 16 Utility substation or pumping station | N | N | N | N | N | N | N | N | N | N | N | N | N | N | N | N | N | N | N | N | N | N | N | N | N |
| | 16(A) Municipal water facilities | P | P | P | P | P | P | P | P | P | P | P | P | P | P | P | P | P | P | P | P | P | P | P | P | P |
| | 17 Radio and TV studio | N | N | N | N | N | N | N | N | N | N | N | N | N | N | N | N | N | N | N | N | N | N | N | N | N |
| | 18 Sewage treatment facilities (treating offsite waste) | N | N | N | N | N | N | N | N | N | N | N | N | N | N | N | N | N | N | N | N | N | N | N | N | N |
| | 19 Incinerator | N | N | N | N | N | N | N | N | N | N | N | N | N | N | N | N | N | N | N | N | N | N | N | N | N |
| | 20 Hazardous waste management facility | N | N | N | N | N | N | N | N | N | N | N | N | N | N | N | N | N | N | N | N | N | N | N | N | N |
| | 21 Sanitary landfill | N | N | N | N | N | N | N | N | N | N | N | N | N | N | N | N | N | N | N | N | N | N | N | N | N |

F. COMMERCIAL

Wholesale

| | | | | | | | | | | | | | | | | | | | | | | | | | | |
|---|---|---|---|---|---|---|---|---|---|---|---|---|---|---|---|---|---|---|---|---|---|---|---|---|---|---|
| 1.1 Wholesale distribution establishment principal activity of which is sale of merchandise to individuals and corporations for resale to the public with retail sales permitted in no more than 40% of the floor | N | N | N | N | N | N | N | N | N | N | N | N | N | N | N | N | N | N | N | N | N | N | N | N | N | N |
|---|---|---|---|---|---|---|---|---|---|---|---|---|---|---|---|---|---|---|---|---|---|---|---|---|---|---|

Retail Trade Building Materials, Hardware and Equipment

| | | | | | | | | | | | | | | | | | | | | | | | | | | |
|---|---|---|---|---|---|---|---|---|---|---|---|---|---|---|---|---|---|---|---|---|---|---|---|---|---|---|
| 2.1 Lumber and other building materials | N | N | N | N | N | N | N | N | N | N | N | N | N | N | N | N | N | N | N | N | N | N | N | N | N | N |
| 2.2 Heating, plumbing and electrical supplies | N | N | N | N | N | N | N | N | N | N | N | N | N | N | N | N | N | N | N | N | N | N | N | N | N | N |
| 2.3 Paint, glass, wallpaper and hardware | N | N | N | N | N | N | N | N | N | N | N | N | N | N | N | N | N | N | N | N | N | N | N | N | N | N |
| 2.4 Rental (light equipment) | N | N | N | N | N | N | N | N | N | N | N | N | N | N | N | N | N | N | N | N | N | N | N | N | N | N |
| 2.5 Rental (heavy equipment) | N | N | N | N | N | N | N | N | N | N | N | N | N | N | N | N | N | N | N | N | N | N | N | N | N | N |

Retail Trade - General

| | | | | | | | | | | | | | | | | | | | | | | | | | | |
|--|---|---|---|---|---|---|---|---|---|---|---|---|---|---|---|---|---|---|---|---|---|---|---|---|---|---|
| 3.1 General merchandise, department store, furniture and household goods | N | N | N | N | N | N | N | N | N | N | N | N | N | N | N | N | N | N | N | N | N | N | N | N | N | N |
| 3.2 Furniture and home furnishings | N | N | N | N | N | N | N | N | N | N | N | N | N | N | N | N | N | N | N | N | N | N | N | N | N | N |
| 3.3 Household appliance stores | N | N | N | N | N | N | N | N | N | N | N | N | N | N | N | N | N | N | N | N | N | N | N | N | N | N |
| 3.4 Radio, television and music stores, computer sales and services | N | N | N | N | N | N | N | N | N | N | N | N | N | N | N | N | N | N | N | N | N | N | N | N | N | N |
| 3.5 Photo processing and accessories | N | N | N | N | N | N | N | N | N | N | N | N | N | N | N | N | N | N | N | N | N | N | N | N | N | N |

P = Permitted
S = Special Permit
N = Not Permitted

ZONING

Standard Use Tables

| Code | Use | RR60 | LDR43 | LDR40 | MDR30 | MDR20 | HDR15 | HDR10 | HDR6 | P15 | DC1 | DC2 | NB | HC | GC | SC-WH | SC-G | MC | GI | LJ | ORT | OSR | CR | APO | Comments | | |
|---|---|--|-------|-------|-------|-------|-------|-------|------|-----|-----|-----|-----|---|----|-------|------|----|----|----|-----|-----|----|-----|----------|---|--|
| | | P - Professional DC - Downtown Center NB - Neighborhood Business HC - Highway Commercial GC - General Commercial | | | | | | | | | | | | SC-WH - Shore Commercial - Watch Hill SC-G - Shore Commercial - General GI - General Industrial LI - Light Industrial ORT - Office Research, Assembly and Tech. | | | | | | | | | | | | OSR - Open Space and Recreational CR - Commercial Recreational APO - Aquifer Protection Overlay | |
| Retail Trade - Food | | | | | | | | | | | | | | | | | | | | | | | | | | | |
| 4.1 | Supermarket | N | N | N | N | N | N | N | N | N | N | P | N | P | P | N | N | N | N | N | N | N | N | N | P/Q | | |
| 4.2 | Grocery stores, deli, meat, fish, fruit, vegetable, dairy products, bakeries (not exceeding 10,000 square feet) | N | N | N | N | N | N | N | N | N | S | P | S | P | P | S | S | S | N | N | N | N | N | N | N | | |
| 4.3 | Sale of products raised on premises | P | N | P | N | N | N | N | N | N | N | N | N | N | N | N | N | N | N | N | N | N | N | N | P | | |
| Automotive Dealers and Gasoline Stations | | | | | | | | | | | | | | | | | | | | | | | | | | | |
| 5.1 | Motor vehicles and trailers - new and/or used (including repairs conducted only within a building) | N | N | N | N | N | N | N | N | N | N | N | N | P | S | N | N | N | N | S | N | N | N | N | N | Q | |
| 5.2 | Tire, battery and accessory dealers | N | N | N | N | N | N | N | N | N | N | N | N | P | P | N | N | N | N | N | S | N | N | N | N | Q | |
| 5.3 | Gasoline service stations, minor repairs only | N | N | N | N | N | N | N | N | N | N | N | S | P | S | N | N | N | N | N | S | N | N | N | N | N | |
| 5.4 | Boats and marine dealers - storage, repairs and sales | N | N | N | N | N | N | N | N | N | N | N | N | N | N | N | N | P | P | S | N | N | N | N | Q | | |
| Retail Trade - Apparel and Accessory Stores | | | | | | | | | | | | | | | | | | | | | | | | | | | |
| 6.1 | Shoes, tailor, dressmaker, miscellaneous apparel and accessories (including yarn, fabric and sewing supplies) | N | N | N | N | N | N | N | N | N | N | P | P | P | P | P | P | P | P | N | N | N | N | N | N | | |
| Retail Trade, Eating and Drinking Establishments | | | | | | | | | | | | | | | | | | | | | | | | | | | |
| 7.1 | Restaurants (no alcoholic beverage) | N | N | N | N | N | N | N | N | N | P | P | P | P | P | P | P | P | P | N | N | N | N | N | P* | P/Q | |
| 7.2 | Restaurants (alcoholic beverage) | N | N | N | N | N | N | N | N | N | P | P | S | P | P | S | S | S | S | N | N | N | N | N | S* | P/Q | |
| 7.3 | Taverns/hotels (with alcoholic beverage) | N | N | N | N | N | N | N | N | N | S | S | N | P | P | S | S | S | S | N | N | N | N | N | N | P/Q | |
| 7.4 | Drive-through facilities | N | N | N | N | N | N | N | N | N | N | N | N | S | S | N | N | N | N | N | N | N | N | N | N | P/Q | |
| *Only as an accessory use | | | | | | | | | | | | | | | | | | | | | | | | | | | |
| Retail Trade, Miscellaneous | | | | | | | | | | | | | | | | | | | | | | | | | | | |
| 8.1 | Drug stores, newsstands/tobacco stores, antique stores, bookstores/stationary stores, sporting goods, bicycle shop, jewelry stores, florists, camera and photo supply stores, gift, novelty, souvenir shops, optical good stores and video stores | N | N | N | N | N | N | N | N | N | P | P | P/S | P | P | P/S | P/S | N | N | N | N | N | N | N | N | Q | |

P = Permitted
 S = Special Permit
 N = Not Permitted

WESTERLY CODE

Standard Use Tables

| Code | Use | RR60 | LDR43 | LDR40 | MDR30 | MDR20 | HDR15 | HDR10 | HDR6 | P15 | DC1 | DC2 | NB | HC | GC | SC-WH | SC-G | MC | GI | LI | ORT | OSR | CR | APO | Comments | |
|------|---|------|-------|-------|-------|-------|-------|-------|------|-----|-----|-----|----|----|----|-------|------|----|----|----|-----|-----|----|-----|----------|-----------------------------------|
| | | | | | | | | | | | | | | | | | | | | | | | | | | |
| | RR - Rural Residential | | | | | | | | | | | | | | | | | | | | | | | | | OSR - Open Space and Recreational |
| | LDR - Low Density Residential | | | | | | | | | | | | | | | | | | | | | | | | | CR - Commercial Recreational |
| | MC - Marine Commercial | | | | | | | | | | | | | | | | | | | | | | | | | APO - Aquifer Protection Overlay |
| | MDR - Medium Density Residential | | | | | | | | | | | | | | | | | | | | | | | | | |
| | HDR - High Density Residential | | | | | | | | | | | | | | | | | | | | | | | | | |
| | P - Professional | | | | | | | | | | | | | | | | | | | | | | | | | |
| | DC - Downtown Center | | | | | | | | | | | | | | | | | | | | | | | | | |
| | NB - Neighborhood Business | | | | | | | | | | | | | | | | | | | | | | | | | |
| | HC - Highway Commercial | | | | | | | | | | | | | | | | | | | | | | | | | |
| | GC - General Commercial | | | | | | | | | | | | | | | | | | | | | | | | | |
| | SC-WH - Shore Commercial - Watch Hill | | | | | | | | | | | | | | | | | | | | | | | | | |
| | SC-G - Shore Commercial - General | | | | | | | | | | | | | | | | | | | | | | | | | |
| | GI - General Industrial | | | | | | | | | | | | | | | | | | | | | | | | | |
| | LI - Light Industrial | | | | | | | | | | | | | | | | | | | | | | | | | |
| | ORT - Office Research, Assembly and Tech. | | | | | | | | | | | | | | | | | | | | | | | | | |
| | P/S denotes permitted for less than 2,000 square feet and special use permit for greater than 2,000 square feet | | | | | | | | | | | | | | | | | | | | | | | | | |
| 8.2 | Gun shops | N | N | N | N | N | N | N | N | N | N | S | N | N | S | N | N | N | N | N | N | N | N | N | N | P |
| 8.3 | Sporting goods and bicycle shops | N | N | N | N | N | N | N | N | N | P | P | P | P | P | P | P | P | N | N | N | N | N | N | N | P |
| 8.4 | Farm and garden supply stores | N | N | N | N | N | N | N | N | N | N | P | N | P | P | N | N | N | N | N | N | N | N | N | N | N |
| 8.5 | Banking services | N | N | N | N | N | N | N | N | N | S | P | N | P | P | N | N | N | N | N | N | N | N | N | N | P |
| 8.6 | Pet shops | N | N | N | N | N | N | N | N | N | P | P | N | P | P | N | N | N | N | N | N | N | N | N | N | P |
| 8.7 | Liquor/package store | N | N | N | N | N | N | N | N | N | N | P | N | P | P | N | N | N | N | N | N | N | N | N | N | Q |
| 8.8 | (a) Drive-through facilities for drug stores and pharmacies | N | N | N | N | N | N | N | N | N | N | S | N | P | S | N | N | N | N | N | N | N | N | N | N | P/Q |
| | (b) Drive-through facilities for any other retail use | N | N | N | N | N | N | N | N | N | S | S | N | S | S | N | N | N | N | N | N | N | N | N | N | Q |
| 8.9 | Retail not herein specified | N | N | N | N | N | N | N | N | N | S | S | S | S | S | S | S | S | N | S | N | N | N | N | N | Q |

G. BUSINESS AND PROFESSIONAL SERVICES

| Code | Use | RR60 | LDR43 | LDR40 | MDR30 | MDR20 | HDR15 | HDR10 | HDR6 | P15 | DC1 | DC2 | NB | HC | GC | SC-WH | SC-G | MC | GI | LI | ORT | OSR | CR | APO | Comments | |
|---|--|------|-------|-------|-------|-------|-------|-------|------|-----|-----|-----|----|----|----|-------|------|----|----|----|-----|-----|----|-----|----------|-----|
| 1.1 | General commercial offices | N | N | N | N | N | N | N | N | N | S | S | P | P | P | S | S | N | N | N | P | N | N | N | P/Q | |
| 1.2 | Financial institutes, research and development, financial services support, banking (greater than 10,000 square feet) | N | N | N | N | N | N | N | N | S | P | P | N | P | P | N | N | N | N | N | P | N | N | N | P/Q | |
| 1.3 | General and professional offices (including medical, legal, accounting, engineering, architectural, insurance and real estate) [Amended 4-26-2004 by Ch. No. 1480] | N | N | N | N | N | N | N | N | P | P | P | P | P | P | P | P | N | N | N | S | N | N | N | P/Q | |
| *Offices permitted in CR Zone only if the office structure is of residential style with a footprint not to exceed 1,500 square feet and limited to residential signage, as per Section 11.2.6(E), (F) and (G), and the office activities do not involve frequent access by the public | | | | | | | | | | | | | | | | | | | | | | | | | | |
| 1.4 | Social clubs (including liquor license) | N | N | N | N | N | N | N | N | N | P | P | S | P | P | N | N | N | N | N | N | N | N | N | N | P/Q |
| 1.5 | (a) Drive-through facilities for banks and financial services | N | N | N | N | N | N | N | N | N | N | S | N | P | S | N | N | N | N | N | N | N | N | N | N | |
| | (b) Drive-through facilities for other above uses | N | N | N | N | N | N | N | N | N | N | S | N | S | S | N | N | N | N | N | N | N | N | N | N | |
| Personal Services | | | | | | | | | | | | | | | | | | | | | | | | | | |
| 2.1 | Laundry dropoff/pickup (no on-site cleaning) | N | N | N | N | N | N | N | N | N | S | P | S | P | P | S | S | N | N | N | N | N | N | N | N | P |

P = Permitted
S = Special Permit
N = Not Permitted

ZONING

Standard Use Tables

| RR - Rural Residential LDR - Low Density Residential MC - Marine Commercial MDR - Medium Density Residential HDR - High Density Residential | | P - Professional DC - Downtown Center NB - Neighborhood Business HC - Highway Commercial GC - General Commercial | | SC-WH - Shore Commercial - Watch Hill SC-G - Shore Commercial - General GI - General Industrial LI - Light Industrial ORT - Office Research, Assembly and Tech. | | | | | OSR - Open Space and Recreational CR - Commercial Recreational APO - Aquifer Protection Overlay | | | | | | | | | | | | | | | | | |
|--|---|--|-------|---|-------|-------|-------|-------|---|-----|-----|-----|-----|----|----|-------|------|----|----|----|-----|-----|----|-----|----------|---|
| Code | Use | RR60 | LDR43 | LDR40 | MDR30 | MDR20 | HDR15 | HDR10 | HDR6 | P15 | DC1 | DC2 | NB | HC | GC | SC-WH | SC-G | MC | GI | LI | ORT | OSR | CR | APO | Comments | |
| 2.2 | Self-service laundromats | N | N | N | N | N | N | N | N | N | N | P | S | P | P | N | N | N | N | N | N | N | N | N | P/Q | |
| 2.3 | Photo studios | N | N | N | N | N | N | N | N | N | P | P | S | P | P | S | S | N | N | N | N | N | N | N | Q | |
| 2.4 | Beauty and barber shops | N | N | N | N | N | N | N | N | S | P | P | P | P | P | S | S | N | N | N | N | N | N | N | Q | |
| 2.5 | Shoe repair, shoe shine and hat cleaning | N | N | N | N | N | N | N | N | N | P | P | P | P | P | S | S | N | N | N | N | N | N | N | Q | |
| 2.6 | Funeral services or mortuary | N | N | N | N | N | N | N | N | N | P | P | S | P | P | N | N | N | N | N | N | N | N | N | Q | |
| 2.7 | Caterers (not accessory to restaurant) | N | N | N | N | N | N | N | N | N | P | P | S | P | P | N | N | N | N | N | N | N | N | N | Q | |
| 2.8 | Kennels or boarding animals (including accessory retail sale) | S | N | S | N | N | N | N | N | N | N | N | N | N | N | N | N | N | N | N | N | N | N | N | Q | |
| 2.9 | Travel agencies | N | N | N | N | N | N | N | N | N | P | P | S | P | P | S | S | N | N | N | N | S | N | N | P | |
| 2.10 | Personal services not herein specified | N | N | N | N | N | N | N | N | S | S | S | S | S | S | S | S | N | N | N | S | N | N | N | | |
| Automotive Services | | | | | | | | | | | | | | | | | | | | | | | | | | |
| 3.1 | Commercial off-street parking | N | N | N | N | N | N | N | N | N | P | S | N | P | P | S | S | N | N | S | N | N | N | N | Q | |
| 3.2 | Commercial parking structures | N | N | N | N | N | N | N | N | S | S | S | N | N | N | N | N | N | N | S | N | N | N | N | Q | |
| 3.3 | Auto repair | N | N | N | N | N | N | N | N | N | N | N | N/S | P | P | N | N | N | N | P | N | N | N | N | N | |
| *N/S denotes prohibited except permitted by Special Use Permit provided property is 40,000 square feet or greater where repairs are conducted only in a building including tire and battery sale installation. | | | | | | | | | | | | | | | | | | | | | | | | | | |
| 3.4 | Automobile body repair | N | N | N | N | N | N | N | N | N | N | N | N | N | N | N | N | N | N | N | N | N | N | N | N | N |
| 3.5 | Automobile services, except repair | N | N | N | N | N | N | N | N | N | N | N | N | N | P | N | N | N | N | N | N | N | N | N | N | N |
| 3.6 | Automobile rentals | N | N | N | N | N | N | N | N | N | N | N | N | N | P | N | N | N | N | N | N | N | N | N | N | N |
| 3.7 | Vehicle and trailer rentals | N | N | N | N | N | N | N | N | N | N | N | N | N | S | P | N | N | N | N | N | N | N | N | N | Q |
| Miscellaneous Repair Services | | | | | | | | | | | | | | | | | | | | | | | | | | |
| 4.1 | Electrical/electronic repair shop | N | N | N | N | N | N | N | N | N | S | P | S | P | P | N | N | N | N | N | N | N | N | N | N | Q |
| 4.2 | Reupholstery and furniture repair | N | N | N | N | N | N | N | N | N | S | P | S | P | P | N | N | N | N | N | N | N | N | N | N | Q |
| 4.3 | Small appliance repairs | N | N | N | N | N | N | N | N | N | S | P | S | P | P | N | N | N | N | N | N | N | N | N | N | Q |
| 4.4 | Small engine repairs | N | N | N | N | N | N | N | N | N | N | N | S | S | P | N | N | N | N | N | N | N | N | N | N | Q |
| 4.5 | Repair and related services not elsewhere classified | N | N | N | N | N | N | N | N | N | S | S | S | S | S | N | N | N | N | N | N | N | N | N | N | Q |
| Indoor Commercial Amusement or Recreation | | | | | | | | | | | | | | | | | | | | | | | | | | |
| 5.1 | Studios/dance schools | N | N | N | N | N | N | N | N | N | P | P | P | P | P | N | N | N | N | N | N | S | N | N | P | |
| 5.2 | Bowling alleys | N | N | N | N | N | N | N | N | N | N | P | N | P | P | N | N | N | N | N | N | N | N | N | P/Q | |

P = Permitted
S = Special Permit
N = Not Permitted

WESTERLY CODE

Standard Use Tables

| Code | Use | SC-WH - Shore Commercial - Watch Hill | | | | | | | | | | OSR - Open Space and Recreational | | | | | | | | | | | | | | |
|------|---|---------------------------------------|-------|-------|-------|-------|-------|-------|------|-----|-----|-----------------------------------|----|----|----|-------|------|----|----|----|-----|-----|----|-----|----------|--|
| | | RR60 | LDR43 | LDR40 | MDR30 | MDR20 | HDR15 | HDR10 | HDR6 | P15 | DC1 | DC2 | NB | HC | GC | SC-WH | SC-G | MC | GI | LI | ORT | OSR | CR | APO | Comments | |
| | RR - Rural Residential | | | | | | | | | | | | | | | | | | | | | | | | | |
| | LDR - Low Density Residential | | | | | | | | | | | | | | | | | | | | | | | | | |
| | MC - Marine Commercial | | | | | | | | | | | | | | | | | | | | | | | | | |
| | MDR - Medium Density Residential | | | | | | | | | | | | | | | | | | | | | | | | | |
| | HDR - High Density Residential | | | | | | | | | | | | | | | | | | | | | | | | | |
| | P - Professional | | | | | | | | | | | | | | | | | | | | | | | | | |
| | DC - Downtown Center | | | | | | | | | | | | | | | | | | | | | | | | | |
| | NB - Neighborhood Business | | | | | | | | | | | | | | | | | | | | | | | | | |
| | HC - Highway Commercial | | | | | | | | | | | | | | | | | | | | | | | | | |
| | GC - General Commercial | | | | | | | | | | | | | | | | | | | | | | | | | |
| | GI - General Industrial | | | | | | | | | | | | | | | | | | | | | | | | | |
| | LI - Light Industrial | | | | | | | | | | | | | | | | | | | | | | | | | |
| | ORT - Office Research, Assembly and Tech. | | | | | | | | | | | | | | | | | | | | | | | | | |
| | SC-G - Shore Commercial - General | | | | | | | | | | | | | | | | | | | | | | | | | |
| | SC-WH - Watch Hill | | | | | | | | | | | | | | | | | | | | | | | | | |
| | CR - Commercial Recreational | | | | | | | | | | | | | | | | | | | | | | | | | |
| | APO - Aquifer Protection Overlay | | | | | | | | | | | | | | | | | | | | | | | | | |

H. GOVERNMENT, EDUCATIONAL AND INSTITUTIONAL

| | | | | | | | | | | | | | | | | | | | | | | | | | | |
|----|---|---|---|---|---|---|---|---|---|---|---|---|---|---|---|---|---|---|---|---|---|---|---|---|-----|---------------|
| 1 | Federal government/postal service | S | S | S | S | S | S | S | S | S | S | S | S | S | S | S | S | S | P | P | P | S | S | S | P/Q | |
| 2 | State and local government | S | S | S | S | S | S | S | S | S | S | S | S | S | S | S | S | S | P | P | P | S | S | S | P/Q | |
| 3 | Public schools, including charter schools | S | S | S | S | S | S | S | S | S | S | S | S | S | S | S | S | P | P | P | P | S | S | S | P/Q | |
| 4 | Private preschool, elementary and secondary | S | S | S | S | S | S | S | S | S | S | S | S | S | S | S | S | P | P | P | P | N | N | N | P/Q | |
| 5 | Trade or professional school | N | N | N | N | N | N | N | N | N | N | N | N | N | N | N | N | N | S | S | S | P | N | N | P/Q | |
| 6 | Other educational institutions | N | N | N | N | N | N | N | N | N | N | N | N | N | N | N | N | N | N | N | N | N | N | N | P/Q | |
| 7 | Hospitals | N | N | N | N | N | N | N | N | N | N | N | N | N | N | N | N | N | N | N | N | N | N | N | Q | |
| 8 | Ambulance services (nonprofit) | N | N | N | N | N | N | N | N | N | N | N | N | N | N | N | N | N | N | N | N | N | N | N | P/Q | |
| 9 | Cemetery | S | S | S | S | S | S | S | S | S | S | S | S | S | S | S | S | S | S | S | S | S | S | S | Q | See § 260-9. |
| 10 | Fire or police station | S | S | S | S | S | S | S | S | S | S | S | S | S | S | S | S | S | S | S | S | S | S | S | P/Q | |
| 11 | Library or museum | S | S | S | S | S | S | S | S | S | S | S | S | S | S | S | S | S | S | S | S | S | S | S | P/Q | |
| 12 | Place of religious worship | S | S | S | S | S | S | S | S | S | S | S | S | S | S | S | S | S | S | S | S | S | S | S | P/Q | |
| 13 | Penal institute (government/private) | N | N | N | N | N | N | N | N | N | N | N | N | N | N | N | N | N | N | N | N | N | N | N | N | N |
| 14 | Day-care/child-care center | S | S | S | S | S | S | S | S | S | S | S | S | S | S | S | S | S | S | S | S | S | S | S | Q | See § 260-65. |

L. RECREATION

| | | | | | | | | | | | | | | | | | | | | | | | | | | |
|---|---|---|---|---|---|---|---|---|---|---|---|---|---|---|---|---|---|---|---|---|---|---|---|---|---|---|
| 1 | General athletic fields (including lighted) | S | S | S | S | S | S | S | S | S | S | S | S | S | S | S | S | S | S | S | S | S | S | P | Q | |
| 2 | Playgrounds | P | P | P | P | P | P | P | P | P | P | P | P | P | P | P | P | P | P | P | P | P | P | P | Q | |
| 3 | Race track (commercial) | N | N | N | N | N | N | N | N | N | N | N | N | N | N | N | N | N | N | N | N | N | N | N | N | N |
| 4 | Camps and campgrounds | N | N | N | N | N | N | N | N | N | N | N | N | N | N | N | N | N | N | N | N | N | N | N | N | N |
| 5 | Bow and gun range | S | N | N | N | N | N | N | N | N | N | N | N | N | N | N | N | N | N | N | N | N | N | N | Q | |

P = Permitted
 S = Special Permit
 N = Not Permitted

ZONING

Standard Use Tables

| | | SC-WH - Shore Commercial - Watch Hill | | | | | | | | | | OSR - Open Space and Recreational | | | | | | | | | | | | | |
|-------------------------------|---|---|-------|-------|-------|-------|---|-------|------|-----|-----|-----------------------------------|----|-----|-----|-------|------|----|----|----|-----|-----|----|-----|---------------|
| | | P - Professional | | | | | SC-G - Shore Commercial - General | | | | | CR - Commercial Recreational | | | | | | | | | | | | | |
| | | DC - Downtown Center | | | | | GI - General Industrial | | | | | APO - Aquifer Protection Overlay | | | | | | | | | | | | | |
| | | NB - Neighborhood Business | | | | | LI - Light Industrial | | | | | | | | | | | | | | | | | | |
| | | HC - Highway Commercial | | | | | ORT - Office Research, Assembly and Tech. | | | | | | | | | | | | | | | | | | |
| | | GC - General Commercial | | | | | | | | | | | | | | | | | | | | | | | |
| Code | Use | RR60 | LDR43 | LDR40 | MDR30 | MDR20 | HDR15 | HDR10 | HDR6 | P15 | DC1 | DC2 | NB | HC | GC | SC-WH | SC-G | MC | GI | LJ | ORT | OSR | CR | APO | Comments |
| 6 | Golf courses (unlighted) | S | N | S | S | N | N | N | N | N | N | N | N | N | N | N | N | N | N | N | N | P | P | Q | |
| 7 | Amusement or theme park | P.D. (Permitted only Plan Resort District. See § 260-48.) | | | | | | | | | | | | | | | | | | | | | | | |
| 8 | Miniature golf | N | N | N | N | N | N | N | N | N | N | N | N | P | P | N | P | N | N | N | N | N | P | P/Q | |
| 9 | Golf driving range/pitch and putt | S | N | N | N | N | N | N | N | N | N | N | N | P | P | N | P | N | N | N | N | N | P | Q | |
| 10 | Boating marinas/yacht club | N | N | N | N | N | N | N | N | N | N | N | N | N | N | P | N | P | N | N | N | N | P | Q | |
| 11 | Beach cabins or bathhouses | N | N | N | N | N | N | N | N | N | N | N | N | N | N | P | N | P | N | N | N | N | P | Q | |
| 12 | Tennis or other outdoor court games - commercial | S | N | N | N | N | N | N | N | N | N | N | N | S | S | N | P | N | N | N | N | S | P | Q | |
| 13 | Conservation lands/wildlife or nature preserve | P | P | P | P | P | P | P | P | P | P | P | P | P | P | P | P | P | P | P | P | P | P | Q | |
| 14 | Subdivision parks | P | P | P | P | P | P | P | P | P | P | P | P | P | P | P | P | P | P | P | P | P | P | P | |
| 15 | Community center | S | S | S | S | S | S | S | S | S | S | S | S | S | S | S | S | S | S | S | S | S | S | P/Q | |
| J. ACCESSORY USE | | | | | | | | | | | | | | | | | | | | | | | | | |
| 1 | Accessory use to a permitted use | P | P | P | P | P | P | P | P | P | P | P | P | P | P | P | P | P | P | P | P | P | P | P | |
| 2 | Accessory use to a special permit | S | S | S | S | S | S | S | S | S | S | S | S | S | S | S | S | S | S | S | S | S | S | Q | |
| 3 | Accessory family dwelling unit | S | S | S | S | S | S | S | S | S | S | S | S | S | S | S | S | S | S | S | S | S | S | Q | |
| 4 | Accessory parking or outdoor storage of one commercial vehicle of up to one-ton capacity | P | P | P | P | P | P | P | P | P | P | P | P | P | P | P | P | P | P | P | P | P | P | P | See § 260-76. |
| 5 | Off-street parking | P | P | P | P | P | P | P | P | P | P | P | P | P | P | P | P | P | P | P | P | P | P | Q | |
| 6 | Customary home occupation (no exterior advertising) | P/S | P/S | P/S | P/S | P/S | P/S | P/S | P/S | P/S | P/S | P/S | N | P/S | P/S | P/S | P/S | N | N | N | N | N | N | Q | See § 260-64. |
| | | P/S denotes permitted for less than 150 square feet and S denotes greater than 150 square feet. | | | | | | | | | | | | | | | | | | | | | | | |
| K. ADULT ENTERTAINMENT | | | | | | | | | | | | | | | | | | | | | | | | | |
| 1 | Adult entertainment business (located no closer than 200 feet to a property in which any residential use, place of religious worship, preschool, elementary or secondary school, day-care/child-care center, athletic field, or playground is located and not within AP 17, Lot 10) | N | N | N | N | N | N | N | N | N | N | N | N | N | N | N | N | N | S | N | N | N | N | N | |
| L. TATTOO PARLORS | | | | | | | | | | | | | | | | | | | | | | | | | |
| 1 | Tattoo parlors (located no closer than 200 feet to a property in which any residential use, place of religious worship, preschool, elementary or secondary school, day-care/child-care center, athletic field, or playground is located and not within AP 17, Lot 10) | N | N | N | N | N | N | N | N | N | N | N | N | N | N | N | N | N | S | N | N | N | N | N | |

P = Permitted
 S = Special Permit
 N = Not Permitted