



For Lease

Building specifications:

- Two-story office building, built in 1988
- Significantly extended building hours (HVAC)
- Ample parking: 5/1,000 s.f.
- Scenic mountain views of Morris County
- Total building sized: 40,900 s.f.
- On-site ownership and management

Availability:

Floor	Availability	Rate
2 nd	2,638 rsf	\$16.00 gross + TE
2 nd	3,974 rsf	\$16.50 gross + TE

6,612 RSF

101 Round Hill Drive
Rockaway, New Jersey

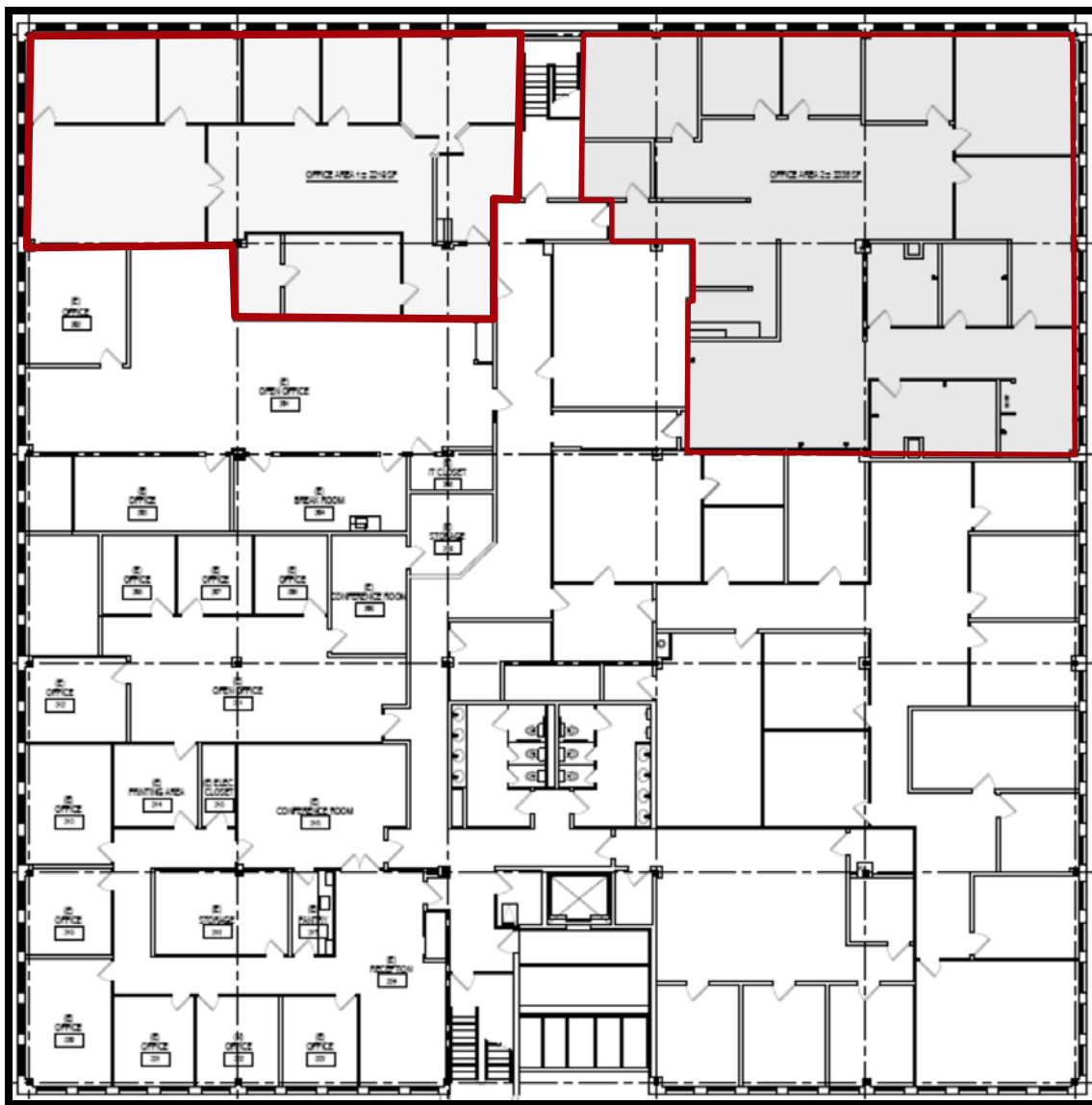
Fred Hyatt

+1 973 404 1481

fred.hyatt@am.jll.com



2,638 rsf



3,974 rsf

Location

- Conveniently located in Morris County with immediate access to I-80, I-287, Routes 46, 10 and 15 as well as many local amenities

