

Creative Office/Retail in SOMA with Exposed Timbers

1121 HOWARD STREET FOR LEASE

AVAILABLE NOW

±2,200-5,000 SF (can be combined)

San Francisco, California 94103



GROUND FLOOR - ±2,800 SF
\$45/SF/YR IG
(Office/Retail)

- Open Space
- Kitchenette
- In-Suite Restrooms

SECOND FLOOR - ±2,200 SF
\$50/SF/YR IG
(Office)

- 2 Private Offices
- 1 Conference Room
- Kitchen
- In-Suite Restroom
- Full HVAC

BUILDING - ±5,000 SF

- Amenity-Rich Neighborhood
- Proximity to the Civic Center BART/MUNI Station

We have obtained the above information from sources we believe to be reliable, but no representations of any kind, expressed to implied, are being made as to the accuracy of such information.

EXCLUSIVE LISTING BROKER:

ETHAN SOMMER
Vice President

(415) 358-2660
ethan@DPWcre.com

388 Market Street, Suite 1300
San Francisco, California 94111
CA BRE: 01925416



7/01/19



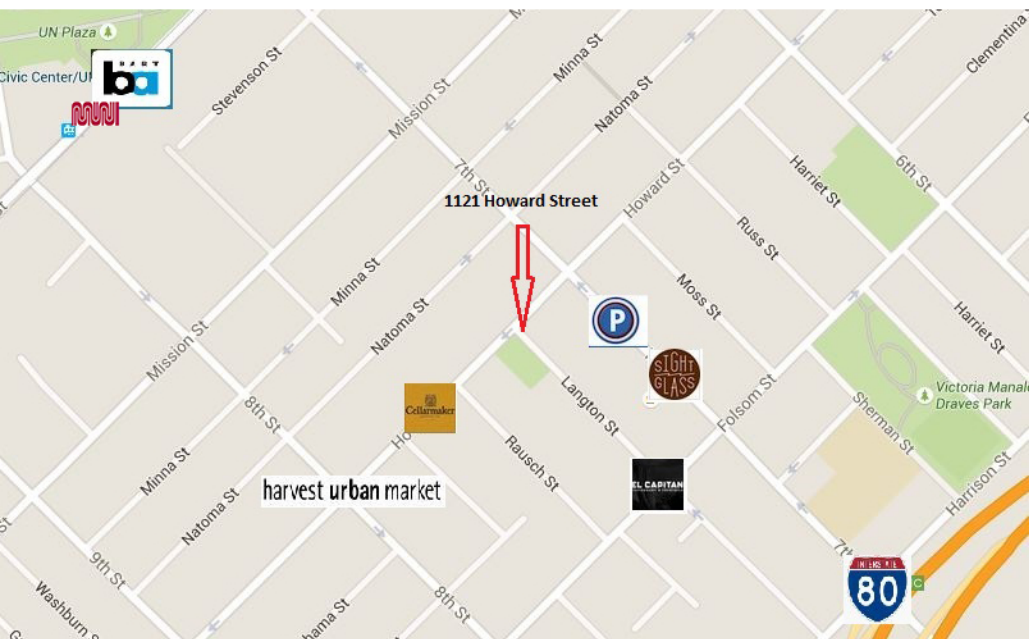
EXCLUSIVE LISTING BROKER:

ETHAN SOMMER
Vice President

(415) 358-2660
ethan@DPWcre.com

388 Market Street, Suite 800
San Francisco, California 94111
CA BRE: 01925416





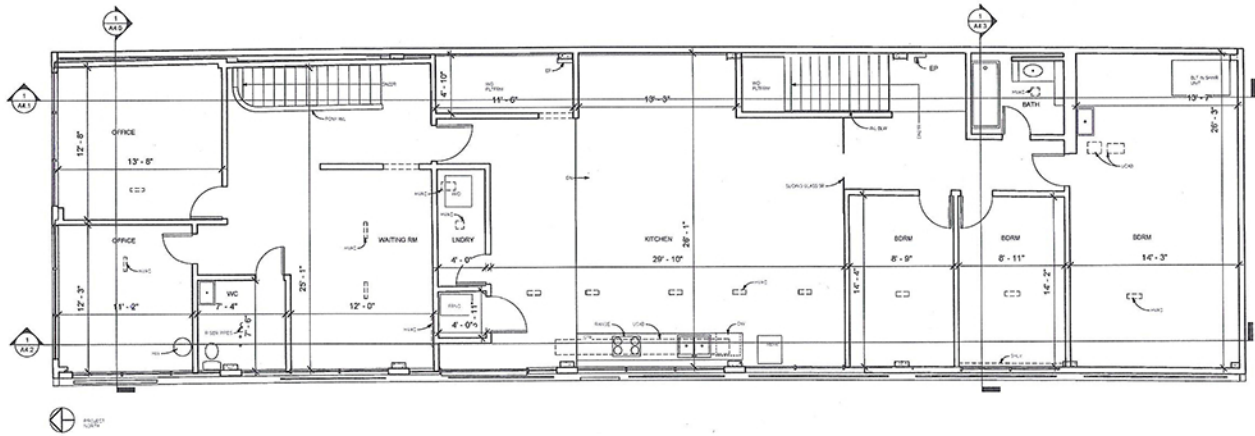
EXCLUSIVE LISTING BROKER:

ETHAN SOMMER
Vice President

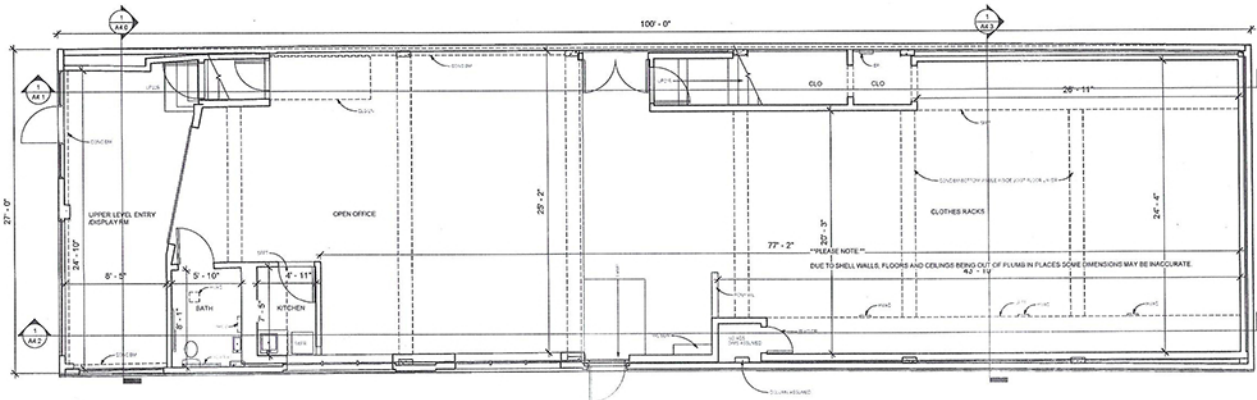
(415) 358-2660
ethan@DPWcre.com

388 Market Street, Suite 1300
San Francisco, California 94111
CA BRE: 01925416





2 EXISTING SECOND LEVEL FLOOR PLAN
1/8" = 1'-0"



1 EXISTING FIRST FLOOR PLAN
1/8" = 1'-0"

EXCLUSIVE LISTING BROKER:

ETHAN SOMMER
Vice President

(415) 358-2660
ethan@DPWcre.com

388 Market Street, Suite 1300
San Francisco, California 94111
CA BRE: 01925416

