



Site
24.2 Acres

For Sale

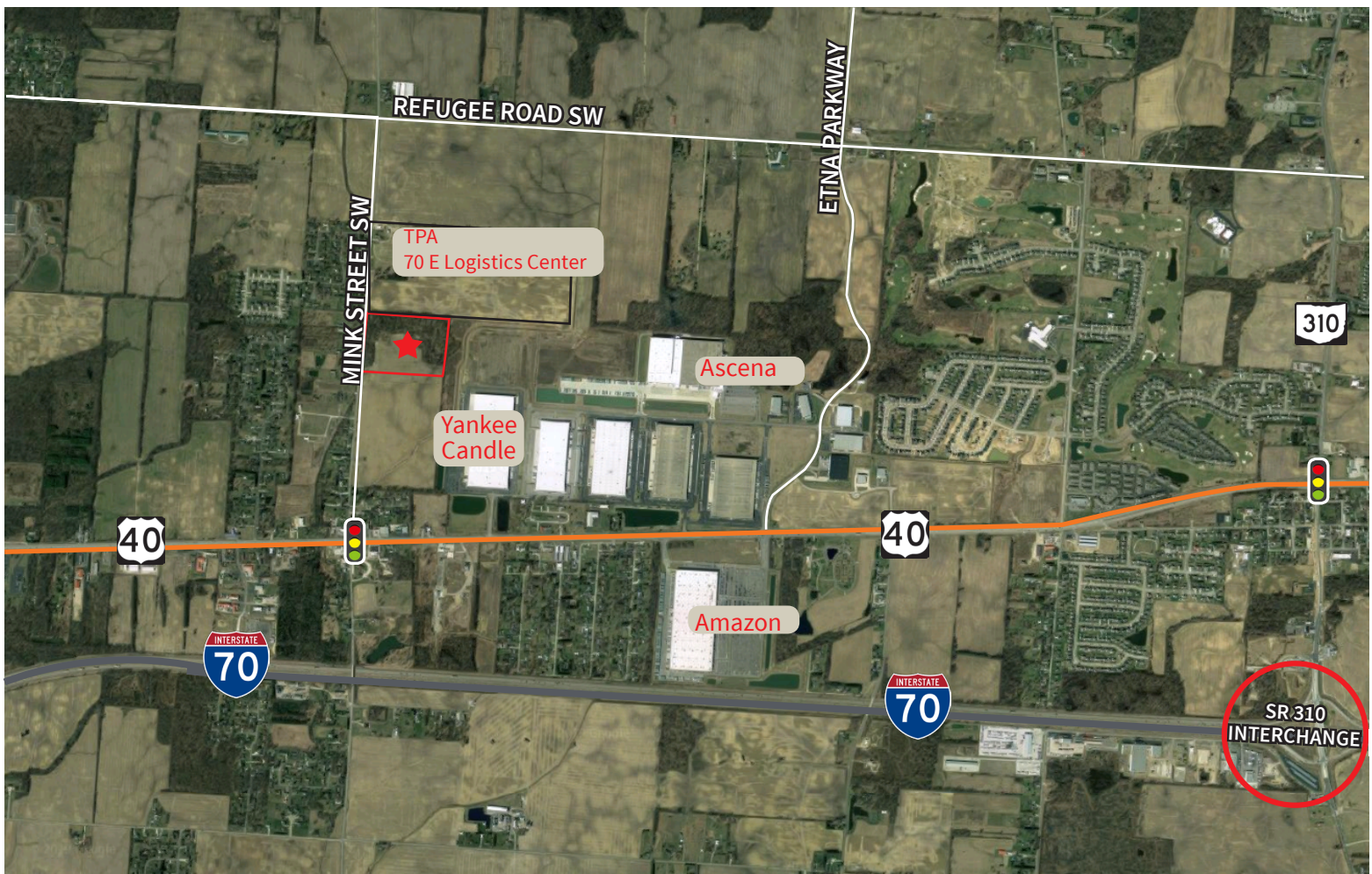
24.2 Acres - Zoned M-1 Shovel Ready

- Great access to I-70 via five lane SR 310 new interchange
- Pro business Etna location, home to Ascena, Amazon, Yankee Candle and Kohl's
- Water and sewer service along Mink Street, via Southwest Licking Water and Sewer District
- 15 Year - 100% tax - abatement available
- Shovel ready!

**8781 Mink Street,
Etna Township, OH 43062**

Brian Marsh
+1 614 460 4421
brian.marsh@am.jll.com





The Perfect Location in Central Ohio

Etna Township is known for its pro-business environment and proximity to a robust labor pool. Located just minutes from downtown Columbus, Etna offers immediate access to I70 and the following:

- **2 miles** from I-70
- **6 miles** from I-270
- **8 miles** from John Glenn International Airport

Etna Township is within a 600 mile radius of 50% of the U.S. population, 78% of the U.S. gross domestic product, more than 80% of Canada's business activity, and 62% of all U.S. manufacturing income making it an ideal location for logistics and manufacturing.

