



Broadway Business Park

2546 West Birchwood Avenue | Mesa, Arizona

For more information, please contact:

Pete Klees

Senior Director
+1 602 224 4415
pete.klees@cushwake.com

James Harper

Director
+1 602 468 8585
james.harper@cushwake.com

2555 E. Camelback Rd, Suite 400
Phoenix, Arizona 85016
ph:+1 602 954 9000
fx:+1 602 253 0528
cushmanwakefield.com



Broadway Business Park

2546 West Birchwood Avenue | Mesa, Arizona



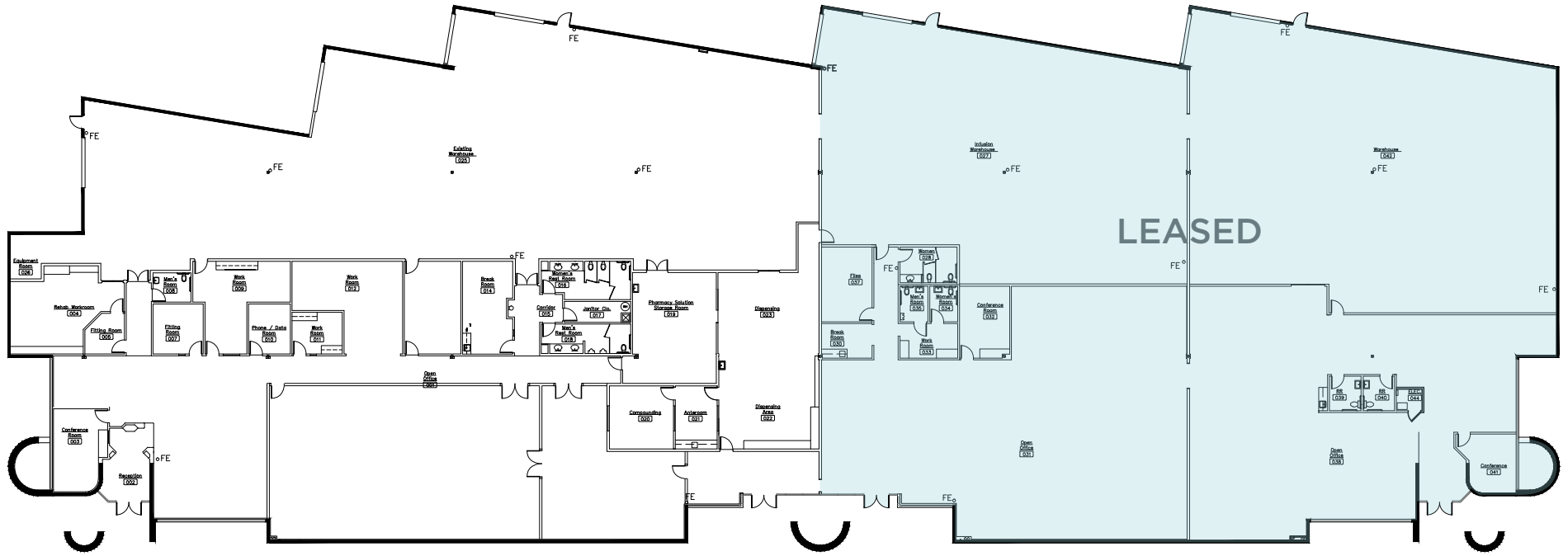
Building Features

- ±40,628 SF
- Available: 20,328 SF
Suite 101-102: 20,328 SF
- 50% office build out or assembly space
- Small cleanroom area
- Truckwell and Grade level Loading
- Excellent access to 101 freeway as well as the 202 Red Mountain and US-60 Superstition Freeways
- 16' clear height
- 1200 amps of 277/480 power to the building
- 2.3/1000 parking
- Fully Sprinklered
- Built in 1998
- 1 Mile from the Apache Blvd Light Rail stop.
- 12 Minutes from Sky Harbor International Airport

#100-102

#103

#104

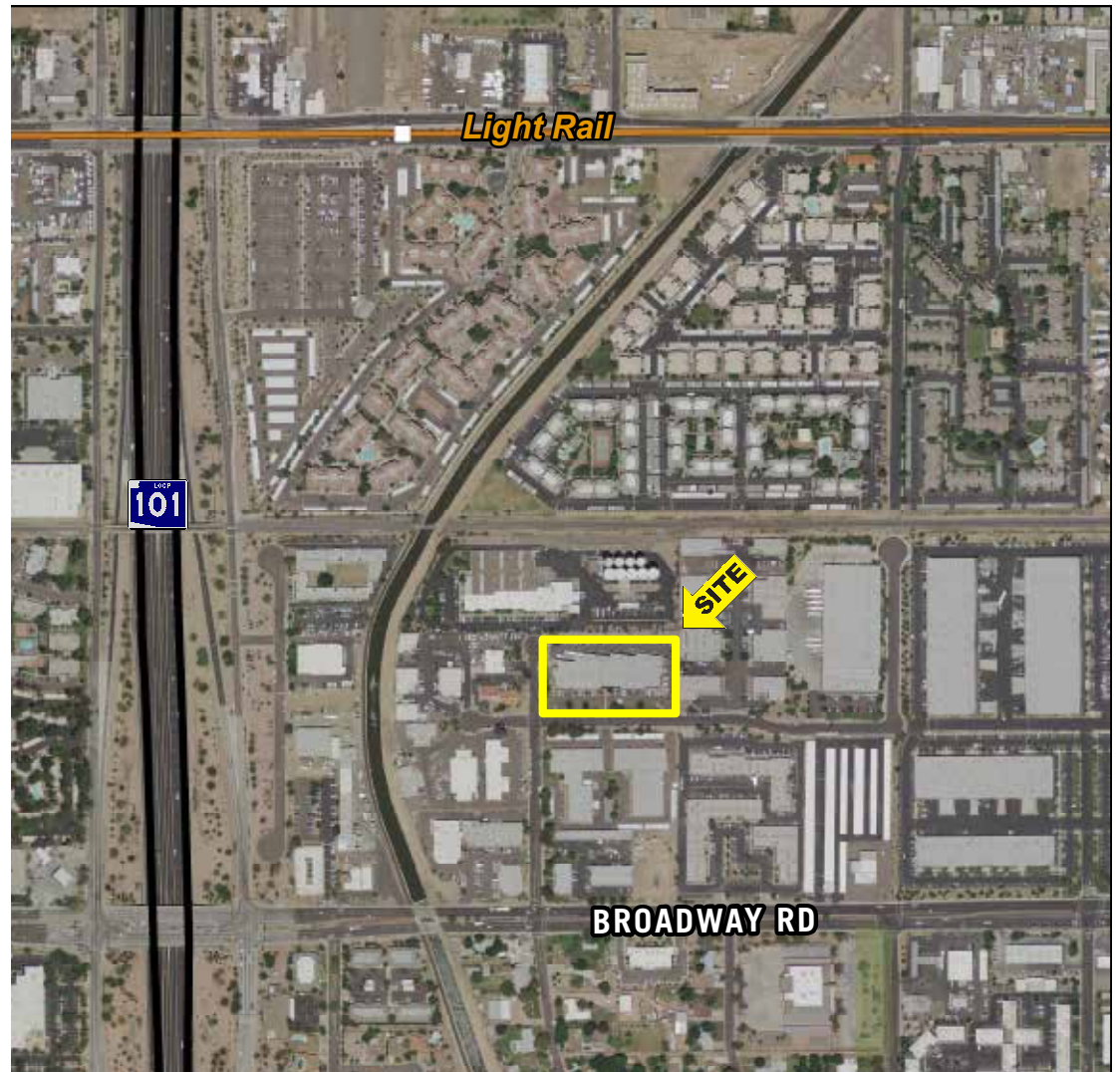
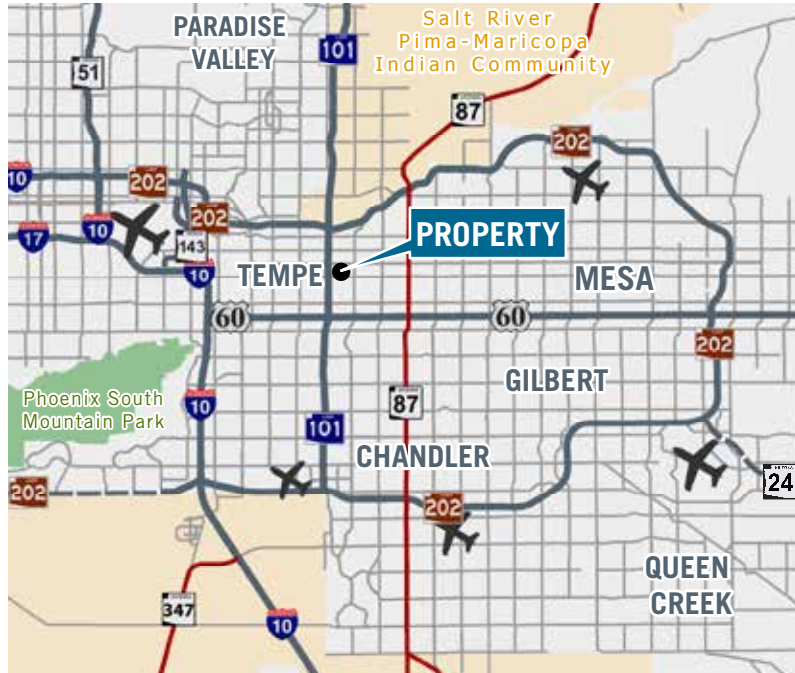


LEASED

1 OVERALL FLOOR PLAN, EXITING PLAN, AND CALCULATIONS

SCALE: 1/16"=1'-0"





Broadway Business Park

2546 West Birchwood Avenue | Mesa, Arizona

For more information, please contact:

Pete Klees

Senior Director
+1 602 224 4415
pete.klees@cushwake.com

James Harper

Director
+1 602 468 8585
james.harper@cushwake.com

2555 E. Camelback Rd, Suite 400
Phoenix, Arizona 85016
ph:+1 602 954 9000
fx:+1 602 253 0528
cushmanwakefield.com

