

T TRANSWESTERN®

EXTRAORDINARY
40
YEARS

**IMMEDIATE
OCCUPANCY**

LIFE SCIENCE SPACE FOR LEASE

2575 WEST BELLFORT STREET

HOUSTON, TEXAS 77054

LIFE SCIENCE SPACE FOR LEASE

2575 WEST BELLFORT STREET

HOUSTON, TEXAS 77054

T TRANSWESTERN®

1900 West Loop South
Suite 1300
Houston, Texas 77027

T 713.270.7700
F 713.270.6285
transwestern.com



PROPERTY DESCRIPTION

57,246 RSF two-story

Life Science focused building

LOCATION

South Texas Medical Center adjacent to NRG.

On the Metro Line

LEASE RATE

\$23.00/ RSF, NNN

AVAILABILITY

12,279 SF

CONTACT

JUSTIN BRASELL

Healthcare Advisory Services

713.231.1595

justin.brasell@transwestern.com

CHRISTIAN CONNELL

Healthcare Advisory Services

713.231.1588

christian.connell@transwestern.com

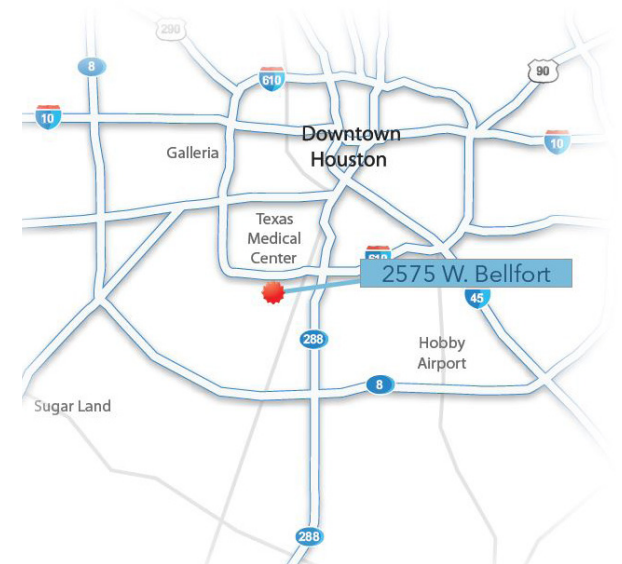
COMMENTS

- 2nd-generation lab space
- Back-up building generator
- Out of all floodplains
- 2016 renovated building
- Energy efficient LED lighting
- 24 hour HVAC

PARKING

Surface and covered parking available

3.5/1,000 Parking Ratio



The information provided herein was obtained from sources believed reliable; however, Transwestern makes no guarantees, warranties or representations as to the completeness or accuracy thereof. The presentation of this property is submitted subject to errors, omissions, change of price or conditions, prior sale or lease, or withdrawal without notice. Copyright © 2019 Transwestern.

LIFE SCIENCE SPACE FOR LEASE

2575 WEST BELLFORT STREET

HOUSTON, TEXAS 77054



1900 West Loop South
Suite 1300
Houston, Texas 77027

T 713.270.7700
F 713.270.6285
transwestern.com

LEVEL 2

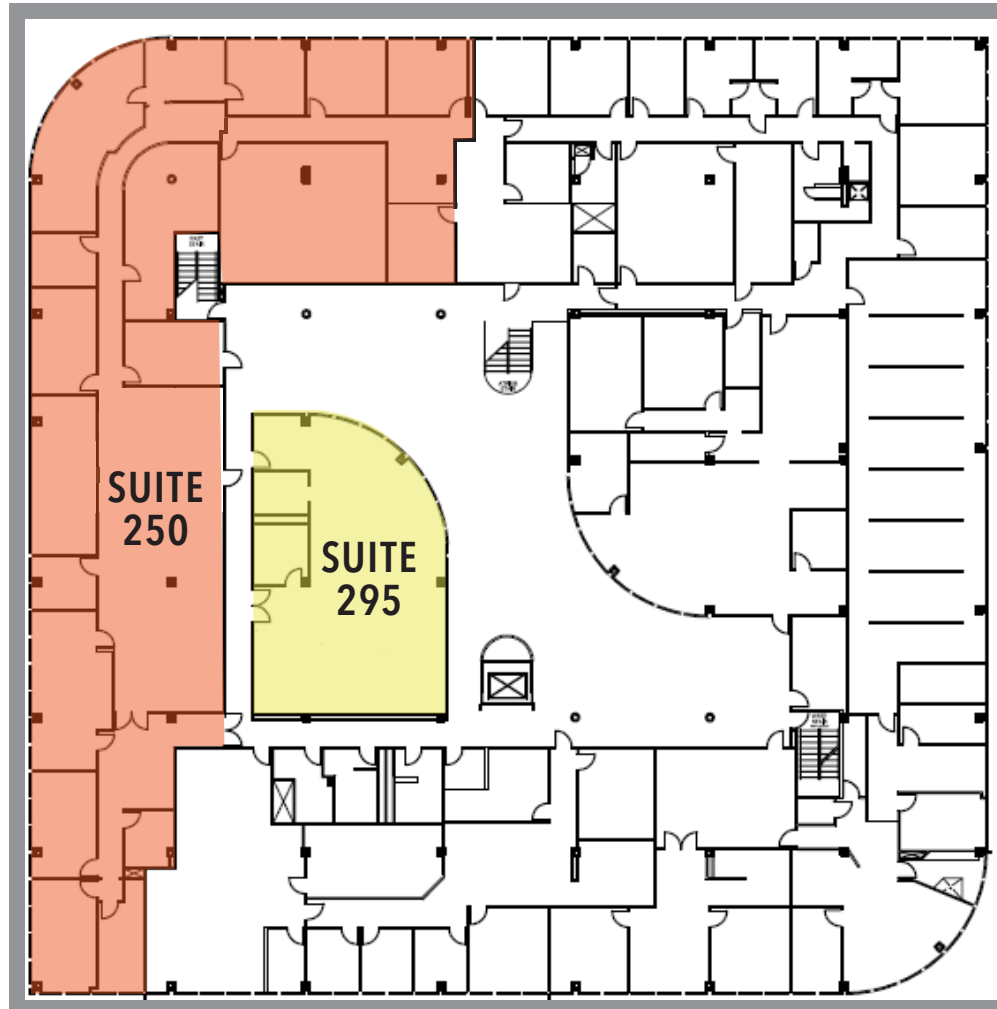
SUITE 250

10,037 SF Available

LEVEL 2

SUITE 295

2,242 SF Available



CONTACT

JUSTIN BRASELL

Healthcare Advisory Services
713.231.1595
justin.brasell@transwestern.com

CHRISTIAN CONNELL

Healthcare Advisory Services
713.231.1588
christian.connell@transwestern.com

The information provided herein was obtained from sources believed reliable; however, Transwestern makes no guarantees, warranties or representations as to the completeness or accuracy thereof. The presentation of this property is submitted subject to errors, omissions, change of price or conditions, prior sale or lease, or withdrawal without notice. Copyright © 2019 Transwestern.